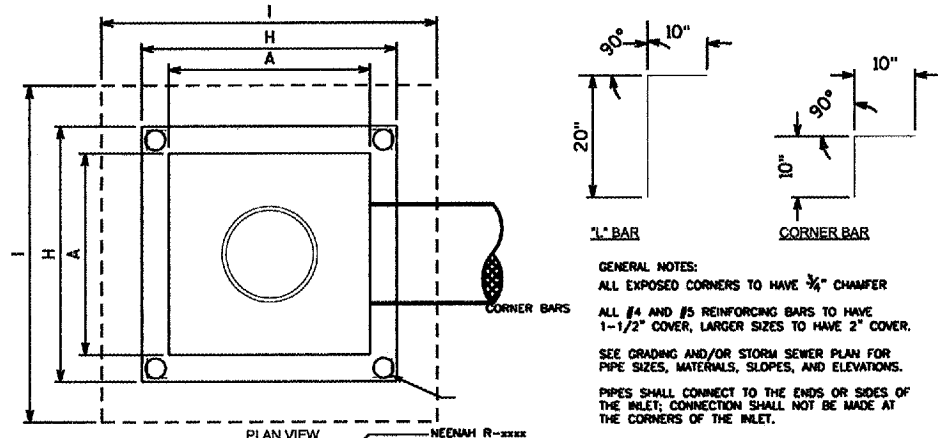


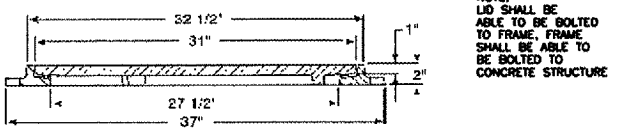
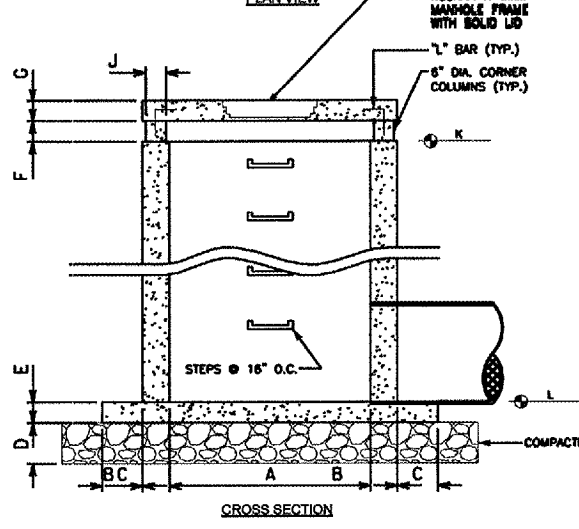
85417

1
26 SPECIAL CATCH BASIN DETAIL



GENERAL NOTES:
 ALL EXPOSED CORNERS TO HAVE 3/4" CHAMFER
 ALL #4 AND #5 REINFORCING BARS TO HAVE 1-1/2" COVER, LARGER SIZES TO HAVE 2" COVER.
 SEE GRADING AND/OR STORM SEWER PLAN FOR PIPE SIZES, MATERIALS, SLOPES, AND ELEVATIONS.
 PIPES SHALL CONNECT TO THE ENDS OR SIDES OF THE INLET; CONNECTION SHALL NOT BE MADE AT THE CORNERS OF THE INLET.
 ALL REINFORCING BARS TO BE GRADE 60.

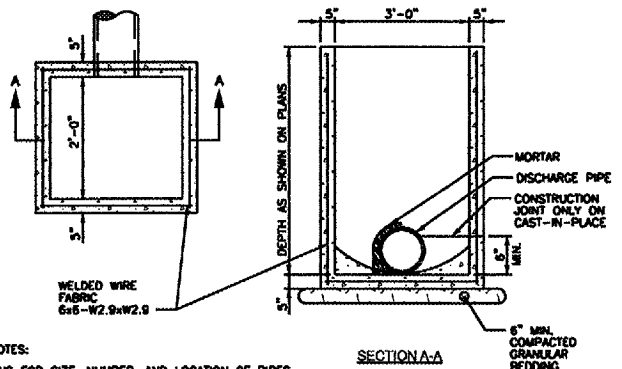
LABEL	DIMENSION
A	4'
B	6"
C	12"
D	8"
E	6"
F	10"
G	6"
H	4'
I	5'
J	6"
K	SEE PLANS
L	SEE PLANS



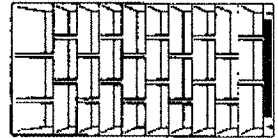
NOTE:
 LID SHALL BE ABLE TO BE BOLTED TO FRAME, FRAME SHALL BE ABLE TO BE BOLTED TO CONCRETE STRUCTURE

FRAME AND LID FOR SPECIAL CATCH BASIN

2
26 SPECIAL INLET DETAIL



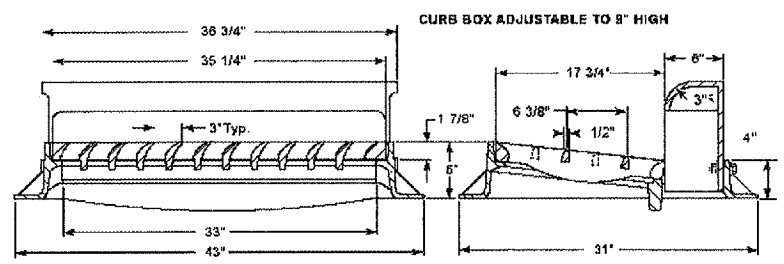
- GENERAL NOTES:
- SEE PLANS FOR SIZE, NUMBER, AND LOCATION OF PIPES.
 - DETAILS OF CONSTRUCTION, MATERIALS AND WORKMANSHIP NOT SHOWN ON THIS DRAWING SHALL CONFORM TO THE PERTINENT REQUIREMENTS OF THE SPECIFICATIONS.
 - DETAILED DRAWINGS FOR PROPOSED ALTERNATE DESIGNS FOR UNDERGROUND DRAINAGE STRUCTURES SHALL BE SUBMITTED TO THE ENGINEER FOR APPROVAL PROVIDING THAT SUCH ALTERNATE DESIGNS MAKE PROVISION FOR EQUIVALENT CAPACITY AND STRENGTH.
 - ALL PRECAST INLET UNITS SHALL CONFORM TO THE PERTINENT REQUIREMENTS OF AASHTO DESIGNATION M 199.
 - PRECAST REINFORCED BASES SHALL BE PLACED ON A BED OF MATERIAL AT LEAST 6 INCHES IN DEPTH, WHICH MEETS THE REQUIREMENTS FOR GRANULAR BACKFILL. THIS BEDDING SHALL BE COMPACTED AND PROVIDE UNIFORM SUPPORT FOR THE ENTIRE AREA OF THE BASE.
 - PRECAST REINFORCED CONCRETE FLAT SLAB TOPS MAY BE USED ON THE STRUCTURES. THE TOPS SHALL BE INSTALLED ON A BED OF MORTAR.
 - ALL BAR STEEL AND WELDED WIRE FABRIC REINFORCEMENT SHALL BE EMBEDDED 2 INCHES CLEAR UNLESS OTHERWISE SHOWN OR NOTED.
 - PRECAST REINFORCED CONCRETE RISERS SHALL BE PLACED WITH TONGUE DOWN.



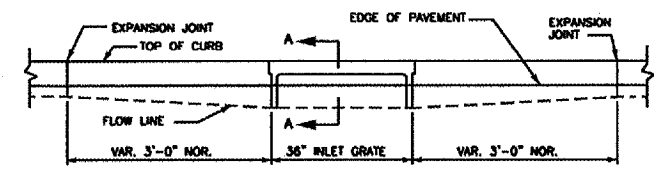
VANE GRATE OPENINGS

NOTE:
 INCLUDE DEPRESSED CURB BOX WHERE INDICATED ON PLAN SHEETS

HIGH INFLOW "VANE" TYPE GRATE OPENINGS

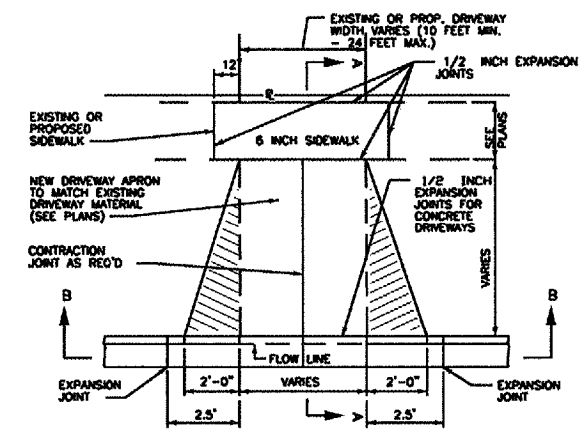
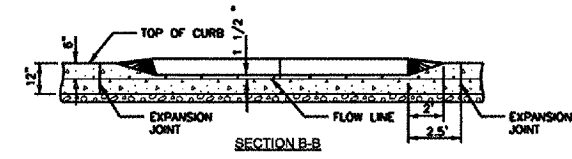
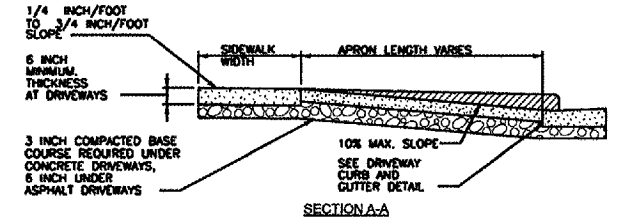


FRAME AND GRATE FOR SPECIAL INLET



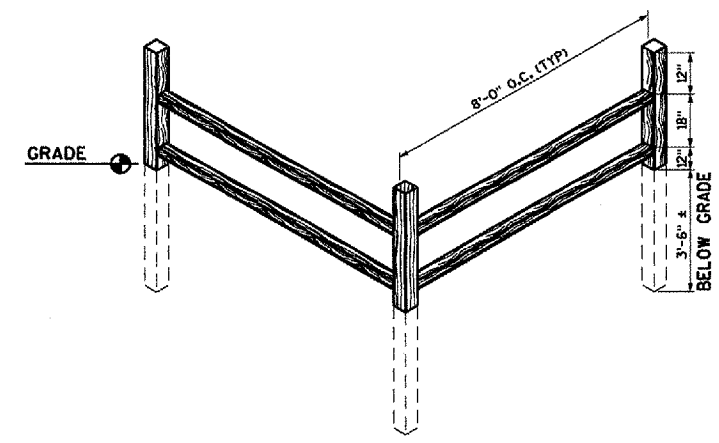
SECTION A-A

3
26 CURB AND GUTTER AT INLETS DETAIL



4
26 DRIVEWAY DETAIL

SCALE: NONE



5
26 WOOD RAIL FENCE DETAIL

SCALE: NONE

MSA
 PROFESSIONAL SERVICES
 TRANSPORTATION • MUNICIPAL
 DEVELOPMENT • ENVIRONMENTAL

REVISIONS	
NAME	DATE

ILLINOIS DEPARTMENT OF TRANSPORTATION

DETAILS

SCALE: VERT.
 HORIZ.
 DATE

DRAWN BY
 CHECKED BY

SURVEYED PLOTTED ALIGNED CHECKED NO. 12/13/2007
 PLAN NOTE BOOK NO. 200 11 / 11
 PROFILE GRADES CHECKED STRUCTURE NOTATIONS CHECKED
 PLOT DATE FILE NAME PLOT SCALE