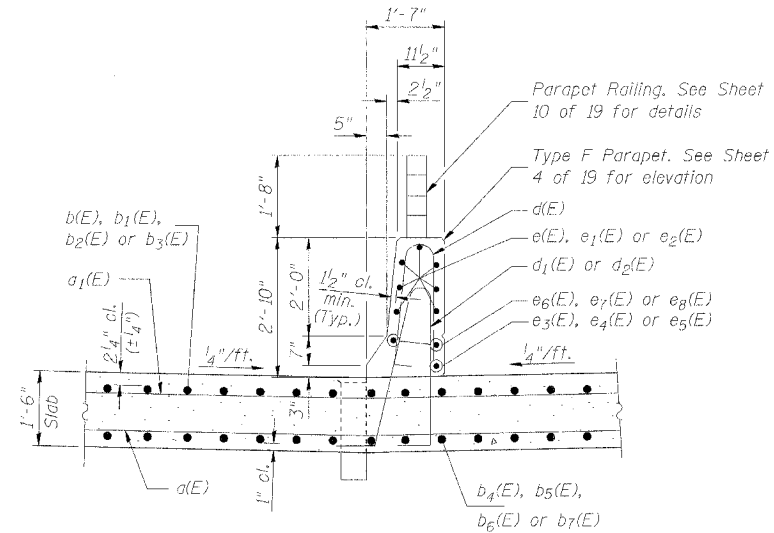
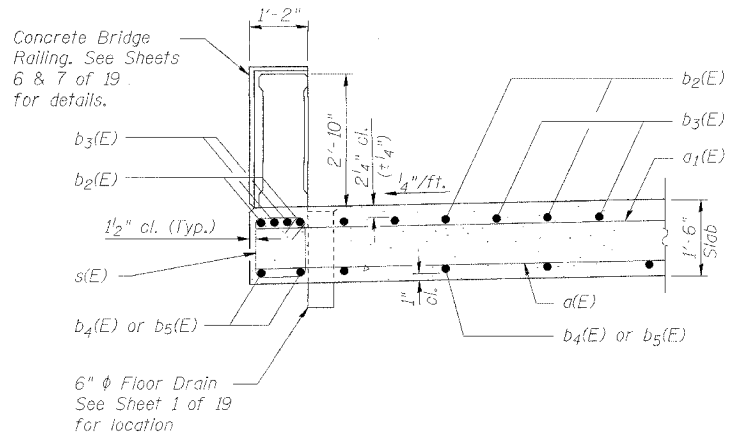
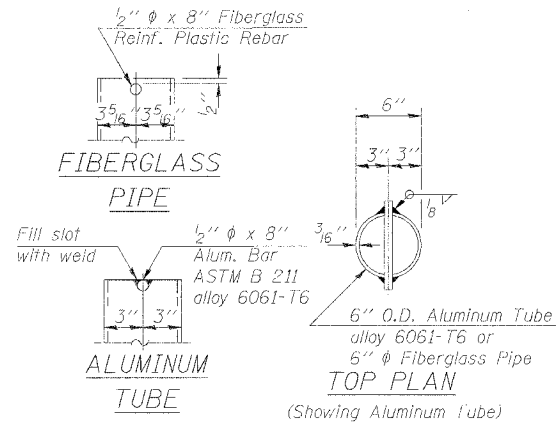


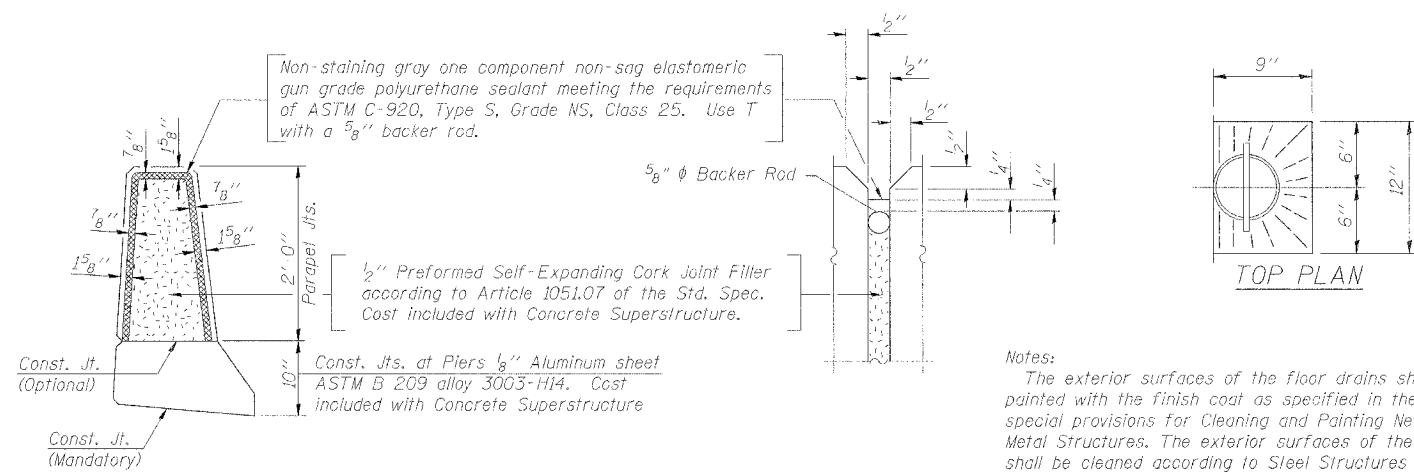
SECTION THRU EDGE BEAM NEAR MIDSPAN  
(Looking East. North beam shown. South beam similar)



SECTION THRU PARAPET  
(Looking East)



SECTION THRU EDGE BEAM OVER PIERS  
(Looking East. North beam shown. South beam similar)

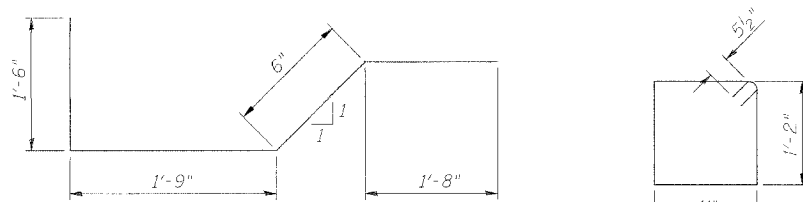


PARAPET JOINT DETAILS

Notes:  
The exterior surfaces of the floor drains shall be painted with the finish coat as specified in the special provisions for Cleaning and Painting New Metal Structures. The exterior surfaces of the drains shall be cleaned according to Steel Structures Painting Council's Spec. SSPC-SPI prior to painting.  
Fiberglass pipe shall conform to ASTM D 2996, with short-time rupture strength hoop tensile stress of 30,000 p.s.i. minimum.

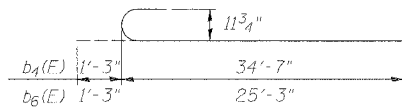
SUPERSTRUCTURE BILL OF MATERIALS

Bar	No.	Size	Length	Shape
a(E)	158	#5	33'-9"	
a1(E)	159	#5	23'-6"	
a2(E)	20	#5	37'-3"	
b(E)	134	#5	15'-8"	
b1(E)	67	#5	10'-3"	
b2(E)	134	#9	35'-0"	
b3(E)	136	#9	10'-6"	
b4(E)	102	#9	35'-10"	
b5(E)	102	#9	24'-4"	
b6(E)	104	#9	26'-6"	
b7(E)	52	#9	24'-6"	
d(E)	180	#5	5'-7"	
d1(E)	114	#5	8'-8"	
d2(E)	66	#5	8'-0"	
e(F)	28	#4	14'-9"	
e1(E)	28	#4	15'-11"	
e2(E)	14	#4	19'-6"	
e3(E)	2	#4	29'-9"	
e4(E)	2	#4	32'-1"	
e5(F)	2	#4	20'-4"	
e6(E)	4	#8	29'-9"	
e7(E)	4	#8	32'-1"	
e8(E)	4	#8	21'-6"	
s(E)	228	#5	5'-1"	
s1(E)	132	#5	5'-5"	
s2(E)	132	#5	6'-7"	
Reinforcement Bars, Epoxy Coated		Pound	75,760	
Concrete Superstructure		Cu. Yd.	418.0	
Bridge Deck Grooving		Sq. Yd.	579	
Protective Coat		Sq. Yd.	1411	
Floor Drains		Each	2	

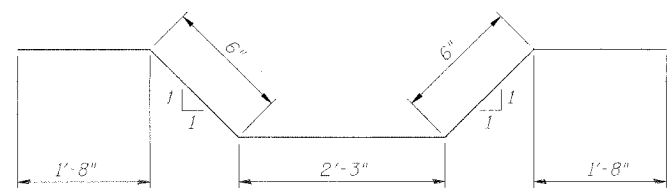


BAR s1(E)

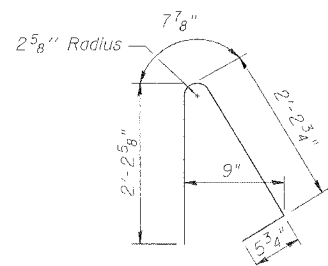
BAR s(E)



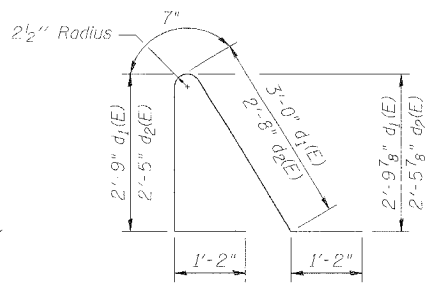
BARS b4(E) & b6(E)



BAR s2(E)



BARS d(E)



BARS d1(E) & d2(E)

NOTES:  
Reinforcement bars designated (E) shall be epoxy coated.  
Bars marked thus 3 x 2 - #4 etc. indicate 3 lines of bars with 2 lengths per line.  
Work this Sheet with Sheets 3 & 4 of 19.

Corporate License Number 184-001-084

SUPERSTRUCTURE DETAILS  
FAIRVIEW DRIVE BRIDGE OVER SOUTH BRANCH OF KISHWAUKEE RIVER  
FAU 5345  
SECTION 04-00166-00-BR  
DEKALB, ILLINOIS  
STRUCTURE NUMBER 019-6106  
STATION 18+34.34