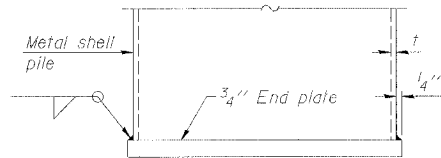
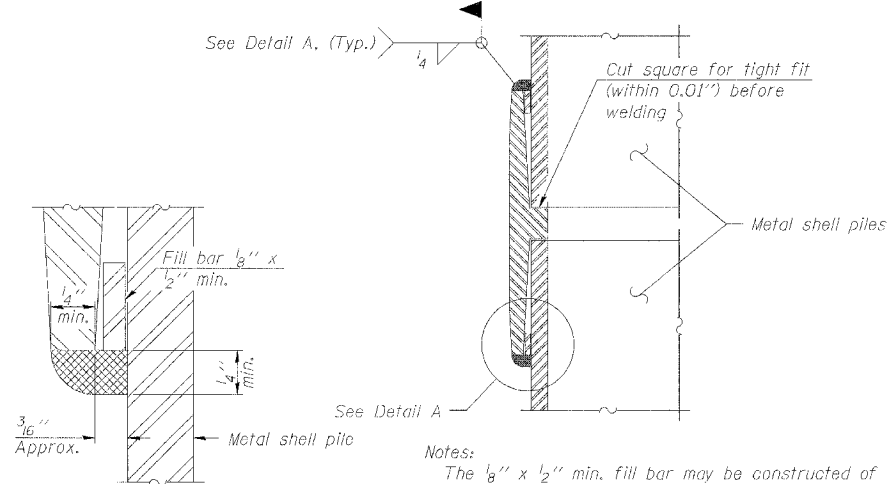


METAL SHELL PILE TABLE

Designation	Wall thickness t	Weight per foot (Lbs./ft.)	Inside volume (yd. ³ /ft.)	Encasement diameter A
PP12	0.250"	31.37	0.0267	26"
PP14	0.250"	36.71	0.0368	N/A



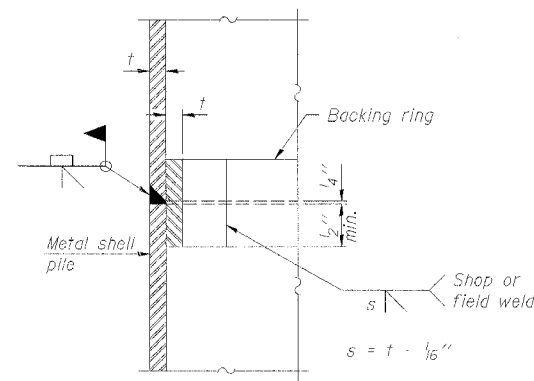
END PLATE ATTACHMENT



DETAIL A

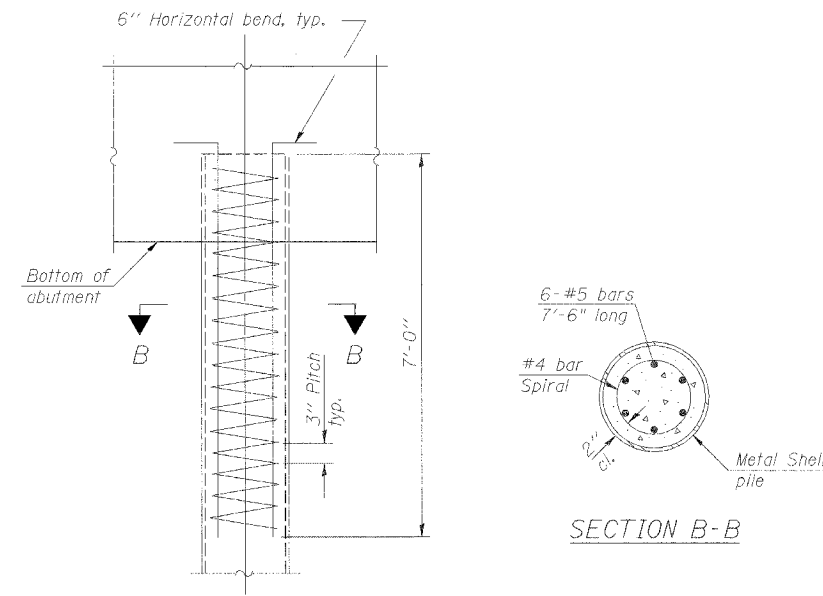
Notes:
 The 1/8" x 1/2" min. fill bar may be constructed of 2 bars with a 1/8" max. gap between them.
 Pile segments shall be driven to solid contact with splicer before welding.

WELDED COMMERCIAL SPLICE



COMPLETE PENETRATION WELD SPLICE

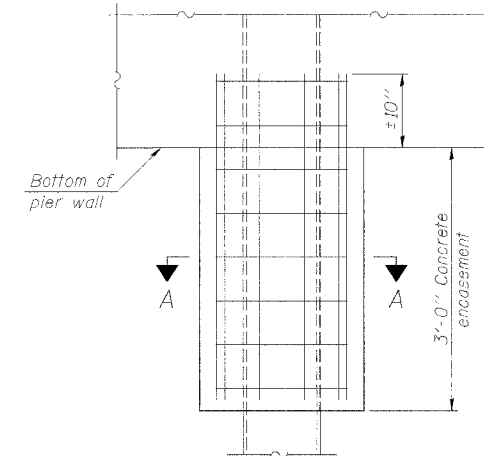
Backing ring made from pile shell. Remove segment to allow reducing circumference and vertically rejoin with partial joint penetration weld.



ELEVATION

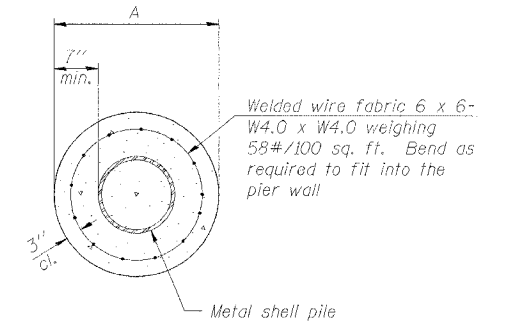
METAL SHELL REINFORCEMENT AT ABUTMENTS

NOTES:
 The metal shell piles shall be according to ASTM A 252 Grade 3.



ELEVATION

CONCRETE ENCASEMENT AT PIERS



SECTION A-A

Notes:
 See Metal Shell Pile Table for dimension "A".
 Forms for encasement may be omitted when soil conditions permit.

SECTION B-B

Corporate License Number 184-001-084

METAL SHELL PILE DETAILS

FAIRVIEW DRIVE BRIDGE OVER SOUTH BRANCH OF KISHWAUKEE RIVER
 FAU 5345
 SECTION 04-00166-00-BR
 DEKALB, ILLINOIS
 STRUCTURE NUMBER 019-6106
 STATION 18+34.34

© Copyright Hanson Professional Services Inc. 2007

DATE 11/05/07

06R1555

ROUTE NO.	SECTION	COUNTY	TOTAL SHEETS	SHEET NO.	SHEET NO. 14
FAU 5345	*	DeKalb	39	30	19 SHEETS
FED. ROAD DIST. NO. 7	S.I. NOTES	FED. AID PROJECT	CONTRACT NO. B7339		
* 04-00166-00-BR					

12-4-03 4 PM
 11/05/2007 12:45 PM
 11/05/2007 12:45 PM
 11/05/2007 12:45 PM

LAYOUT	01/24/07
DRAWN	07/19/07
REVIEWED	07/19/07