

CSI CONSOLIDATED SERVICES INC.
of Coles County

ENGINEERING - SURVEYING - CONSTRUCTION MANAGEMENT
520 Jackson Avenue - P.O. Box 644 - Charleston, Illinois - 61820 - (217) 345-9511

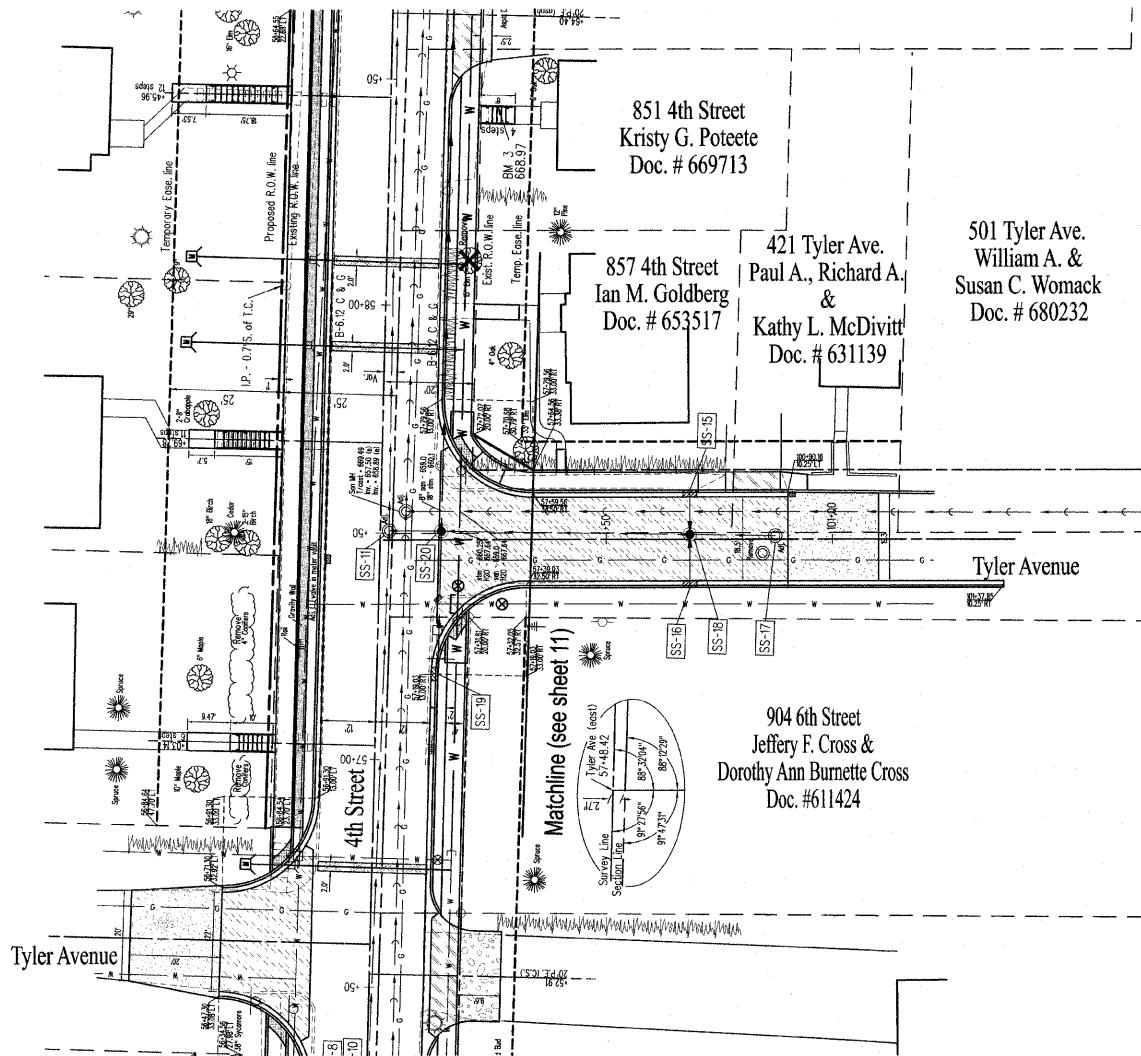
DCR	
DRAWN	CHECKED
DATE	DATE
APPROVED	REVISED
DATE	DATE

SCALES
Plan: 1" = 20'
Profile: 1" = 20'
Vertical: 1" = 2'

4th Street

Plan and Profile

Sheet No.
21
of 57 Sheets



- Surface Removal, 2 1/2"
- PCC Driveway Pavement
- Detectable Warning
- Pavement Patch
- Incidental Hot Mix Asphalt Surfacing
- Aggregate Surface

