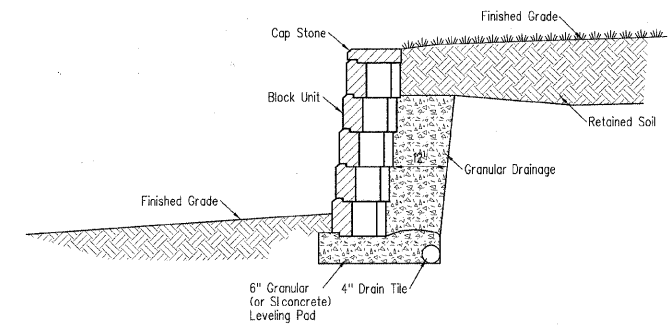


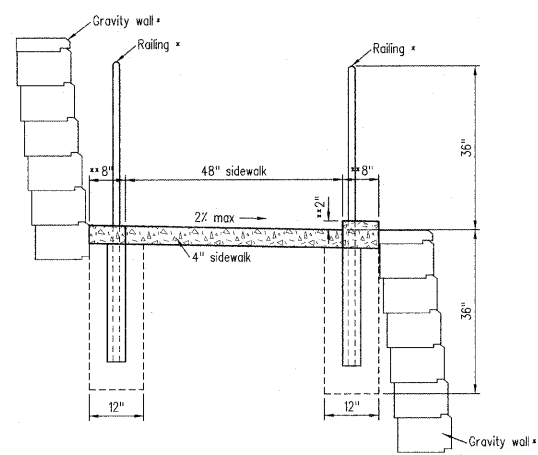
Section

Typical PCC Stairs

T = Tread - 12" min, 15" max  
R = Rise - 6" min, 8" max

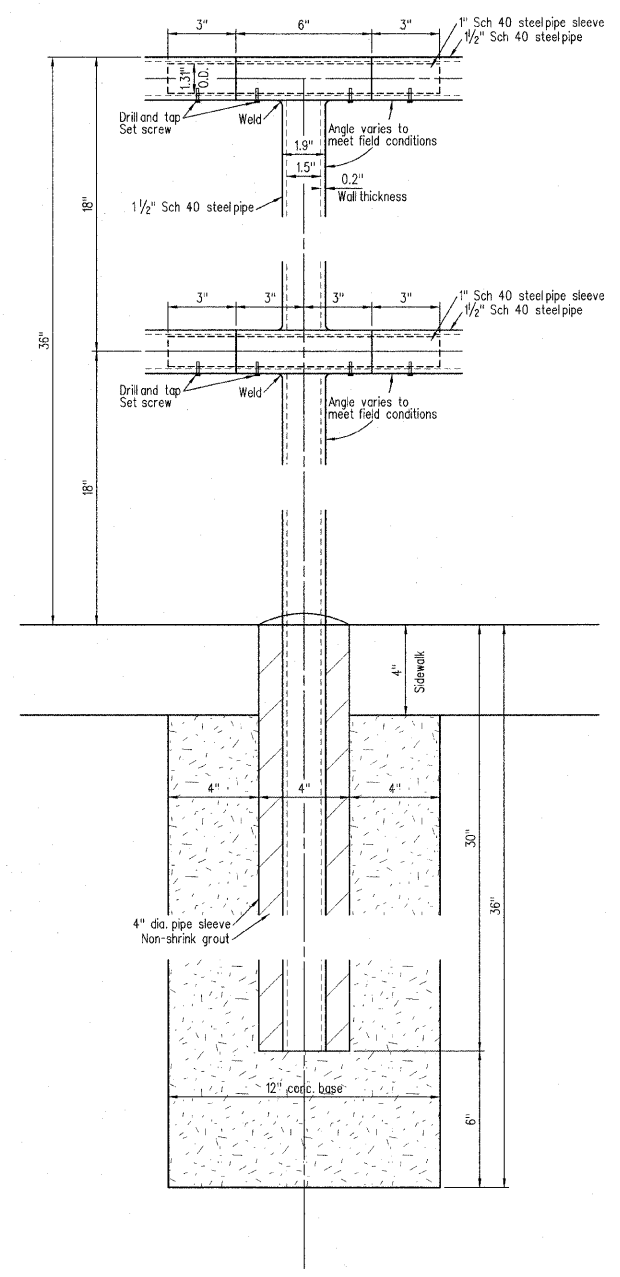


Segmental Concrete Block Wall



\* See plans for locations on railings and gravity walls  
\*\* Additional width and 2" curb included in sidewalk - no additional compensation allowed.

Accessible ramp detail



Typical Railing detail

DCR	DATE	DESCRIPTION

SCALES	N/A

**4th Street**  
Miscellaneous details

Sheet No.  
**28**  
of 57 Sheets