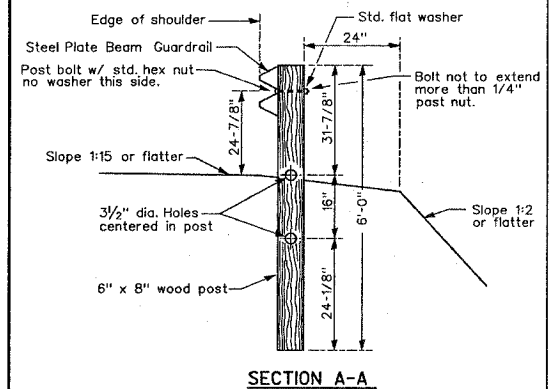
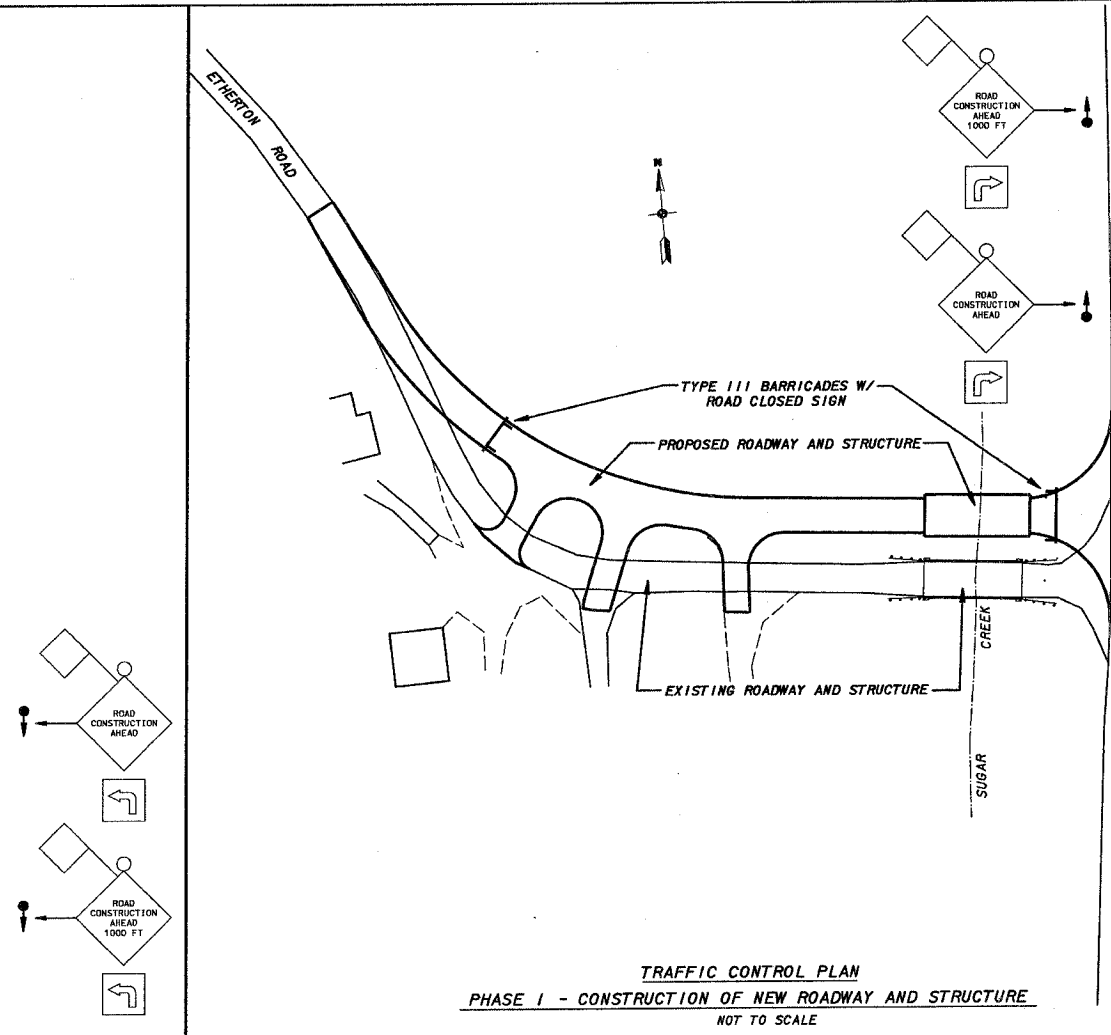
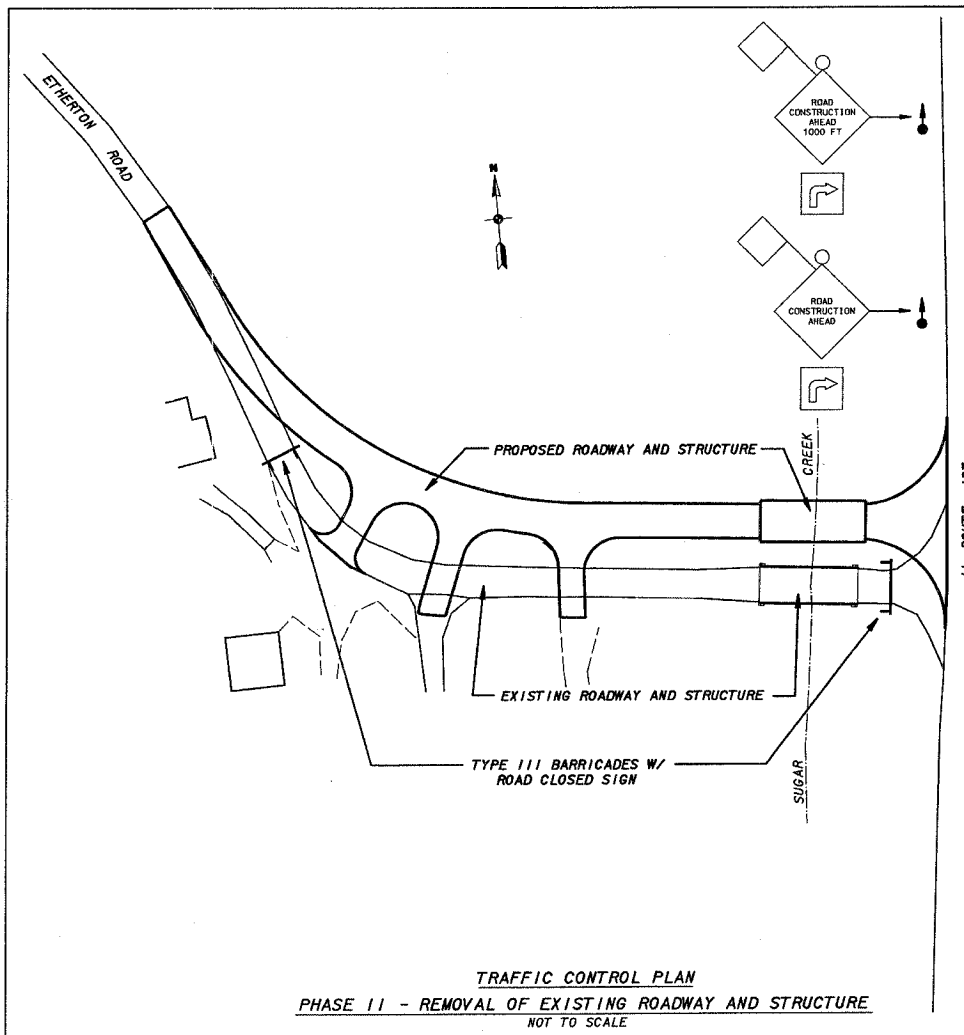
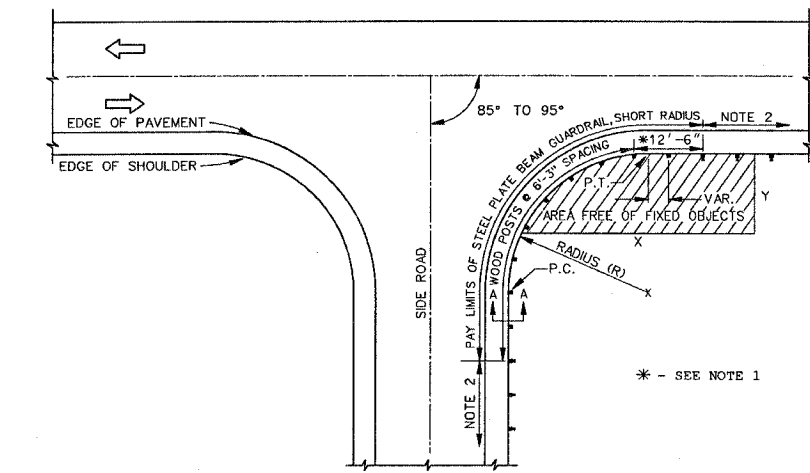
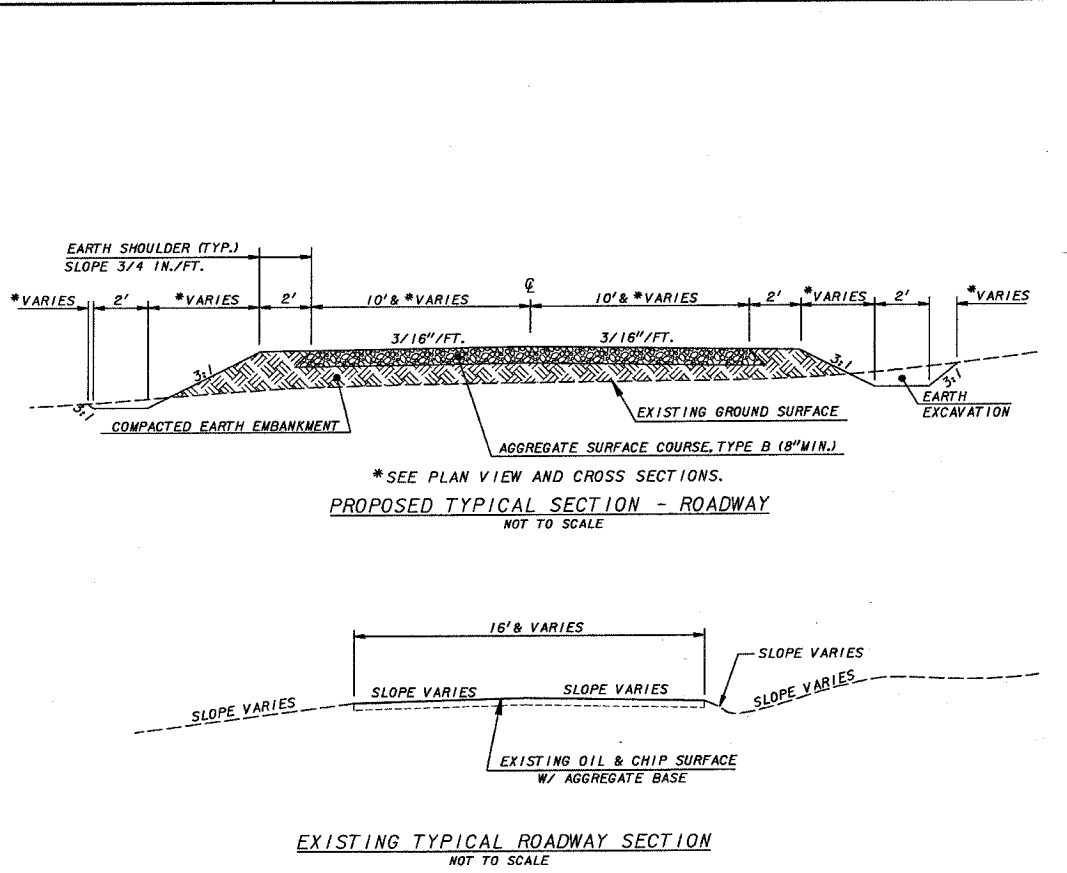
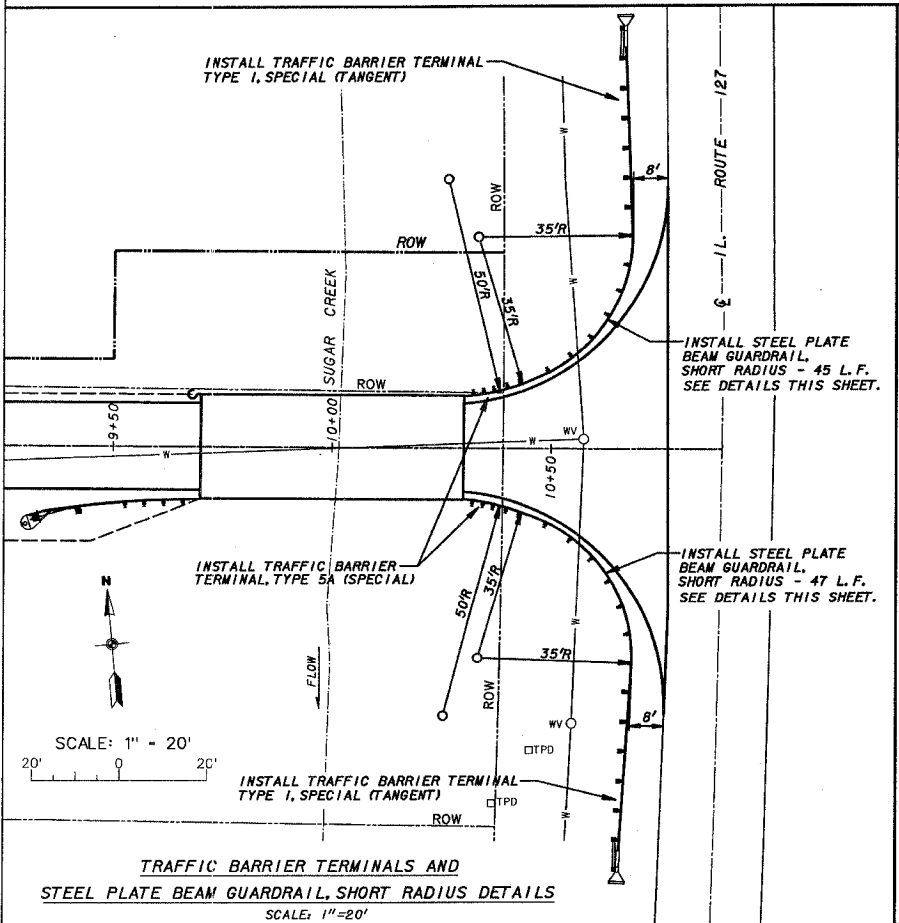


ROUTE	SECTION	COUNTY	TOWNSHIP	TOTAL SHEETS	SHEET NUMBER
T.R. 319	05-13138-00-8R	JACKSON	SEC 3, T10S, R2W	15	2
JOB NO. C-99-550-05			PROJECT NO. BROS-077(43)		
ETHERTON ROAD			CONTRACT NO. 99249		



- NOTES:**
- Construct according to Standard 631011 for Traffic Barrier Terminal Type 2, except delete end section and splice into radius guardrail.
 - Steel Plate Beam Guardrail Type A or Traffic Barrier Terminal as specified.



GENERAL NOTES:
 All slope ratios are expressed as units of vertical displacement to units of horizontal displacement (V:H)
 All dimensions are in inches unless otherwise shown.

INSTALLATION CHARACTERISTICS PER DESIGN RADIUS (R)			
R	NO. OF WOOD POSTS	X	Y
35'-0"	11	50'	20'