

ROUTE	SECTION	COUNTY	TOWNSHIP	TOTAL SHEETS	SHEET NUMBER
T.R. 319	05-1316-00-BR	JACKSON	SEC 3, T10S, R2W	15	3
JOB NO. C-99-550-05		PROJECT NO. BROS-077(43)			
ETHERTON ROAD		CONTRACT NO. 99249			

NOTES

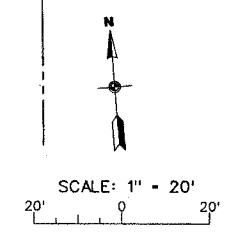
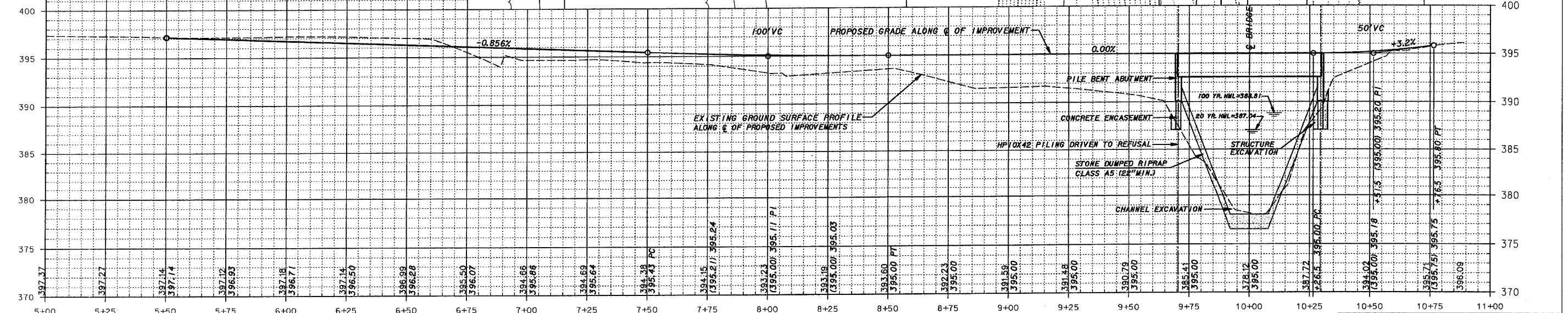
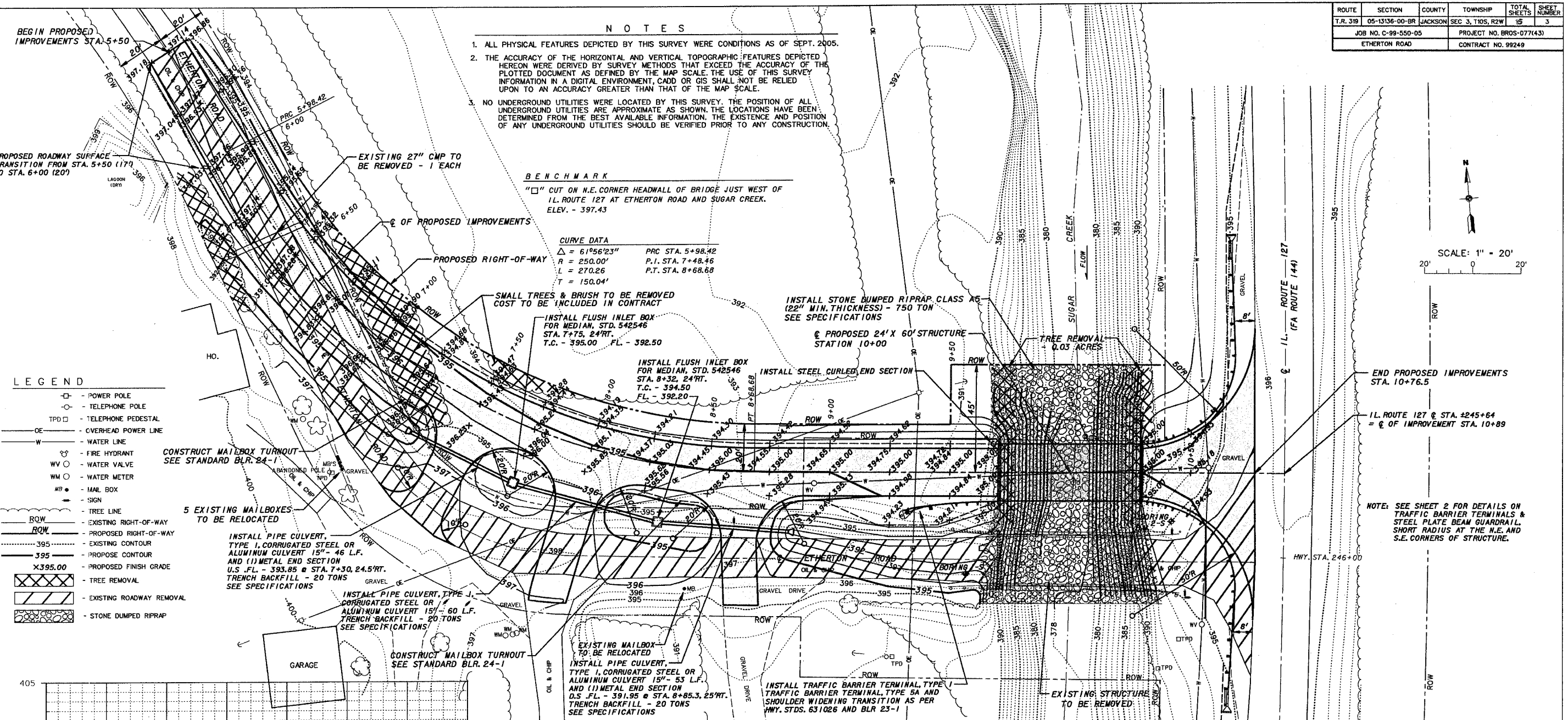
1. ALL PHYSICAL FEATURES DEPICTED BY THIS SURVEY WERE CONDITIONS AS OF SEPT. 2005.
2. THE ACCURACY OF THE HORIZONTAL AND VERTICAL TOPOGRAPHIC FEATURES DEPICTED HEREON WERE DERIVED BY SURVEY METHODS THAT EXCEED THE ACCURACY OF THE PLOTTED DOCUMENT AS DEFINED BY THE MAP SCALE. THE USE OF THIS SURVEY INFORMATION IN A DIGITAL ENVIRONMENT, CADD OR GIS SHALL NOT BE RELIED UPON TO AN ACCURACY GREATER THAN THAT OF THE MAP SCALE.
3. NO UNDERGROUND UTILITIES WERE LOCATED BY THIS SURVEY. THE POSITION OF ALL UNDERGROUND UTILITIES ARE APPROXIMATE AS SHOWN. THE LOCATIONS HAVE BEEN DETERMINED FROM THE BEST AVAILABLE INFORMATION. THE EXISTENCE AND POSITION OF ANY UNDERGROUND UTILITIES SHOULD BE VERIFIED PRIOR TO ANY CONSTRUCTION.

BENCHMARK
 "□" CUT ON N.E. CORNER HEADWALL OF BRIDGE JUST WEST OF I.L. ROUTE 127 AT ETHERTON ROAD AND SUGAR CREEK.
 ELEV. - 397.43

CURVE DATA
 $\Delta = 61^{\circ}56'23''$ PRC STA. 5+98.42
 $R = 250.00'$ P.I. STA. 7+48.46
 $L = 270.26$ P.T. STA. 8+68.68
 $T = 150.04'$

LEGEND

- - POWER POLE
- - TELEPHONE POLE
- TPD □ - TELEPHONE PEDESTAL
- OE - OVERHEAD POWER LINE
- W - WATER LINE
- ⊕ - FIRE HYDRANT
- WV ○ - WATER VALVE
- WM ○ - WATER METER
- MB ● - MAIL BOX
- - SIGN
- - TREE LINE
- - EXISTING RIGHT-OF-WAY
- - PROPOSED RIGHT-OF-WAY
- - EXISTING CONTOUR
- - PROPOSED CONTOUR
- - PROPOSED FINISH GRADE
- - TREE REMOVAL
- - EXISTING ROADWAY REMOVAL
- - STONE DUMPED RIPRAP



END PROPOSED IMPROVEMENTS STA. 10+76.5
 I.L. ROUTE 127 @ STA. 10+89 = C.O. OF IMPROVEMENT STA. 10+89

NOTE: SEE SHEET 2 FOR DETAILS ON TRAFFIC BARRIER TERMINALS & STEEL PLATE BEAM GUARDRAIL. SHORT RADIUS AT THE N.E. AND S.E. CORNERS OF STRUCTURE.