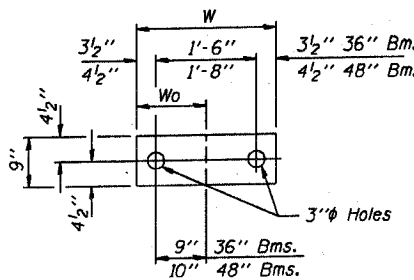
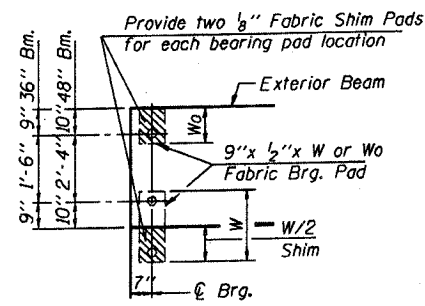
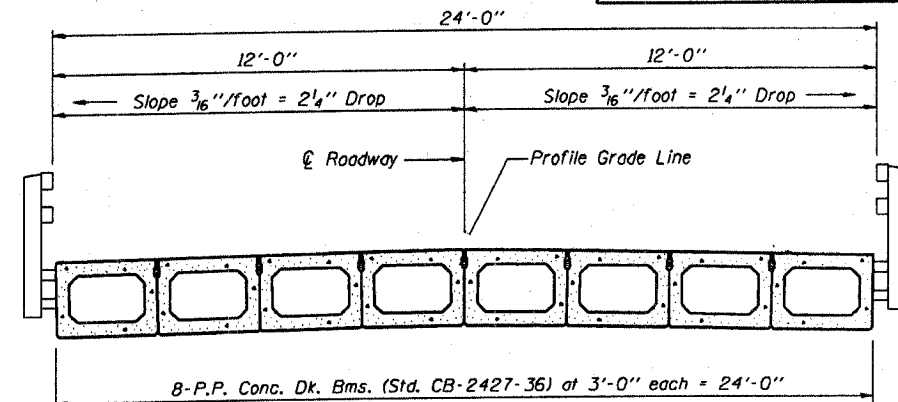


TYPICAL ELEVATIONS

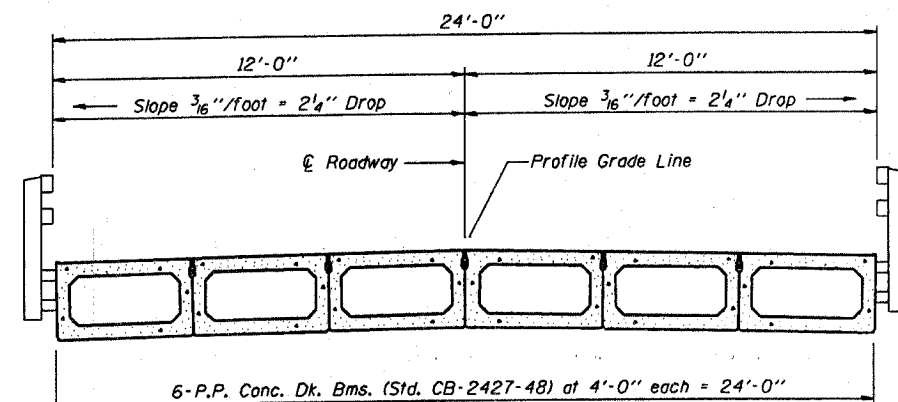


Beam	W	Wo
36"	2'-1"	1'-0 1/2"
48"	2'-5"	1'-2 1/2"

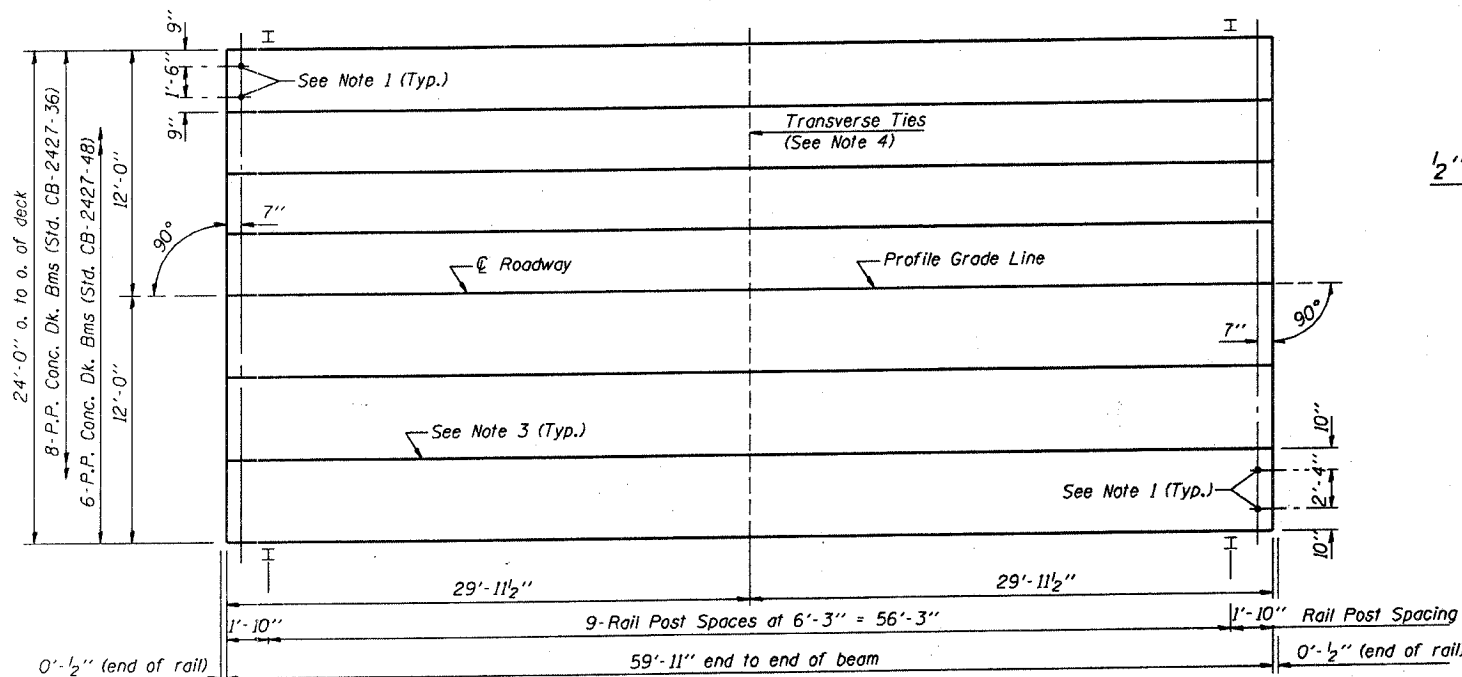
1/2" FABRIC BRG. PAD DETAILS



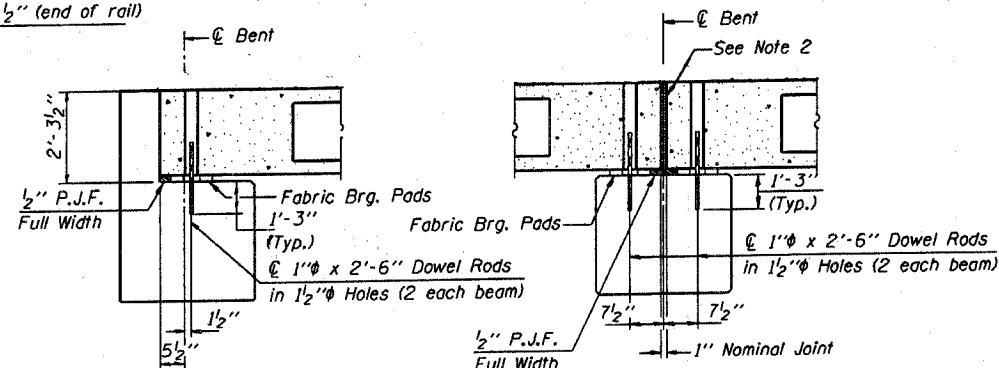
CROSS SECTION



CROSS SECTION



PLAN



SECTION AT ABUTS.
(Along C Beams)

SECTION AT PIERS
(Along C Beams)

QUANTITIES FOR ONE SPAN

P.P. Conc. Dk. Bm. 27" Dp.	1440 Sq. Ft.
Steel Rolling	120 Ft.

NOTES

- After beams have been erected, holes shall be drilled into substructure and anchor dowels placed. Dowel holes shall be filled with non-shrink grout to top of beam and allowed to cure min. 24 hrs. prior to grouting the shear keys.
- Nominal 1" joint at C Pier shall be filled with non-shrink grout.
- Longitudinal keys shall be grouted.
- The 1" rods in the transverse tie assembly shall be tightened to a snug fit and the threads set. Pockets that receive transverse tie bar outside shall be filled with grout after transverse tie assembly is in place.

Illinois Department of Transportation
 PASSED APRIL 4, 2005
 Thomas Namagataki
 Engineer of Bridge Design
 APPROVED APRIL 4, 2005
 Ralph E. Anderson
 Engineer of Bridges and Structures
 1067-1-1 03/05/01

P.P.C. DECK BEAM
 SUPERSTRUCTURE
 24' RDWY. 27" BMS. 60' SPAN 0° SKEW
 STANDARD CS-2427-60