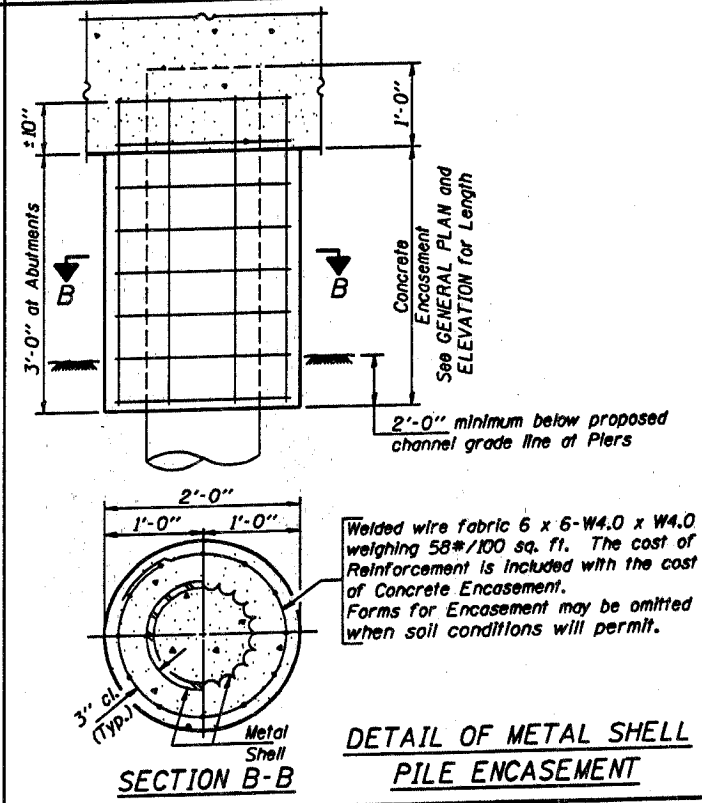
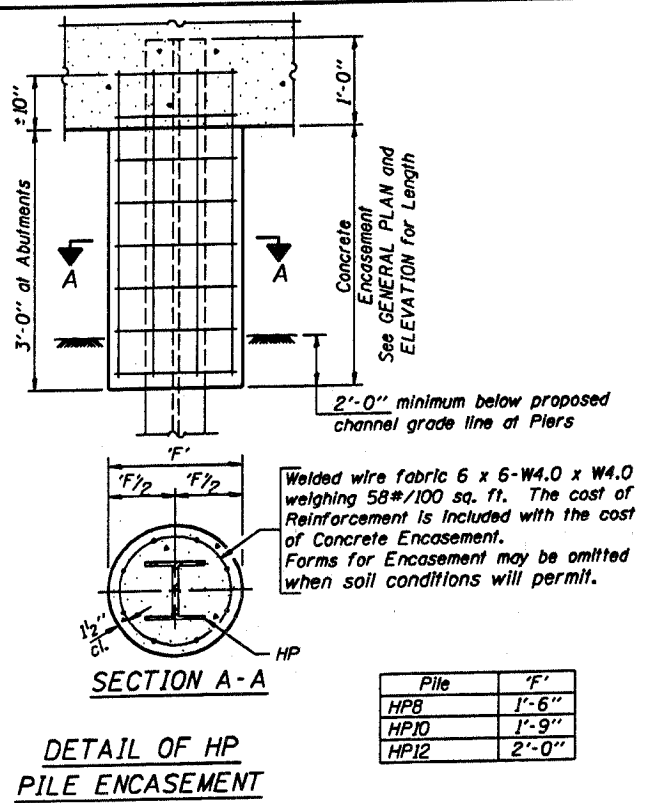
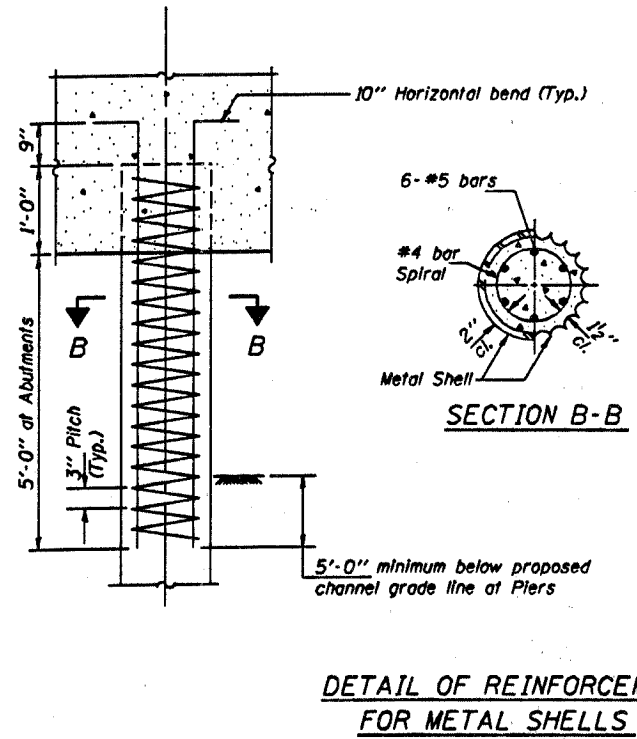
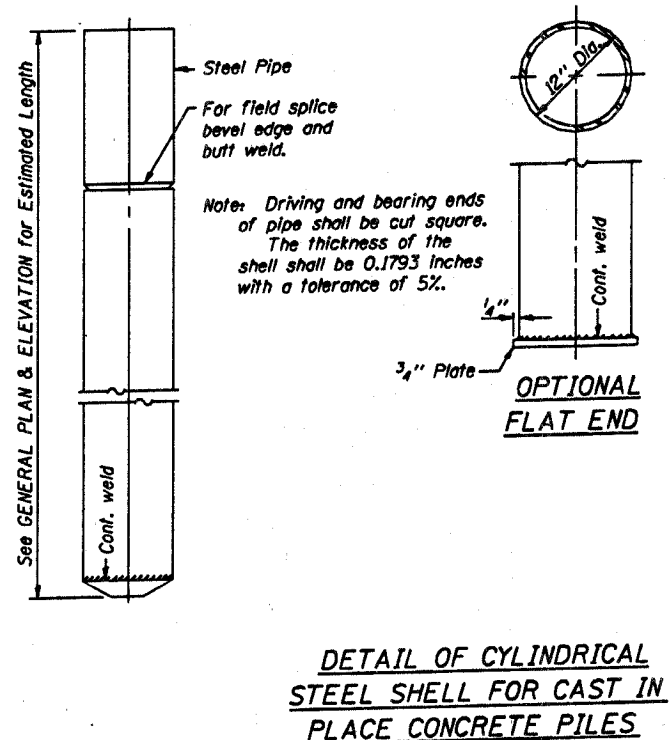
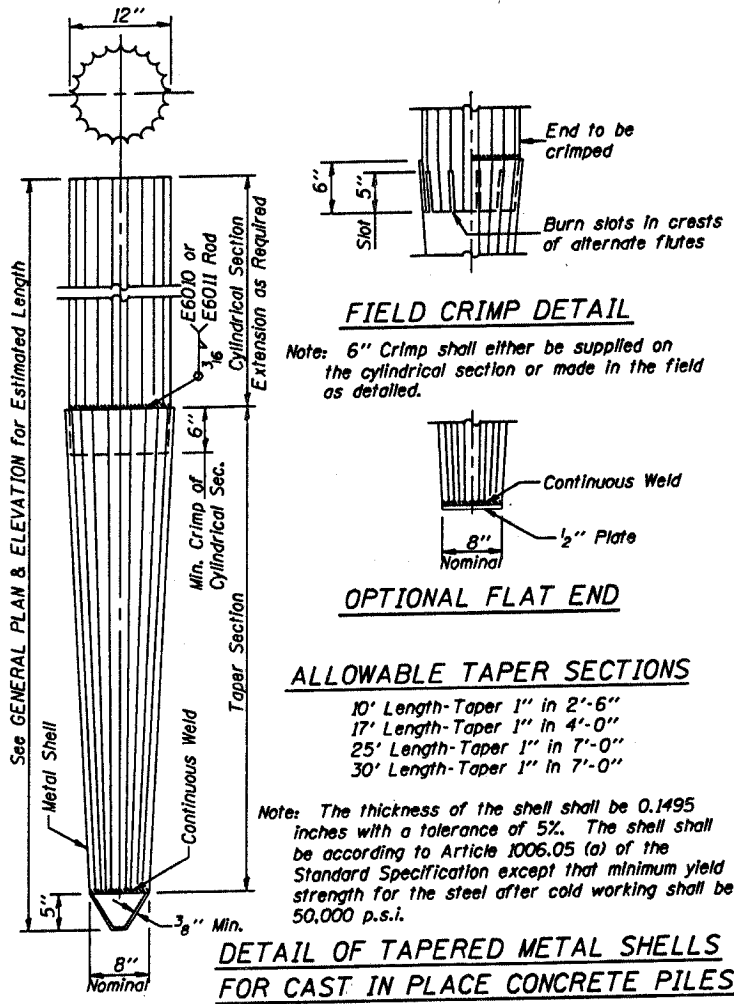
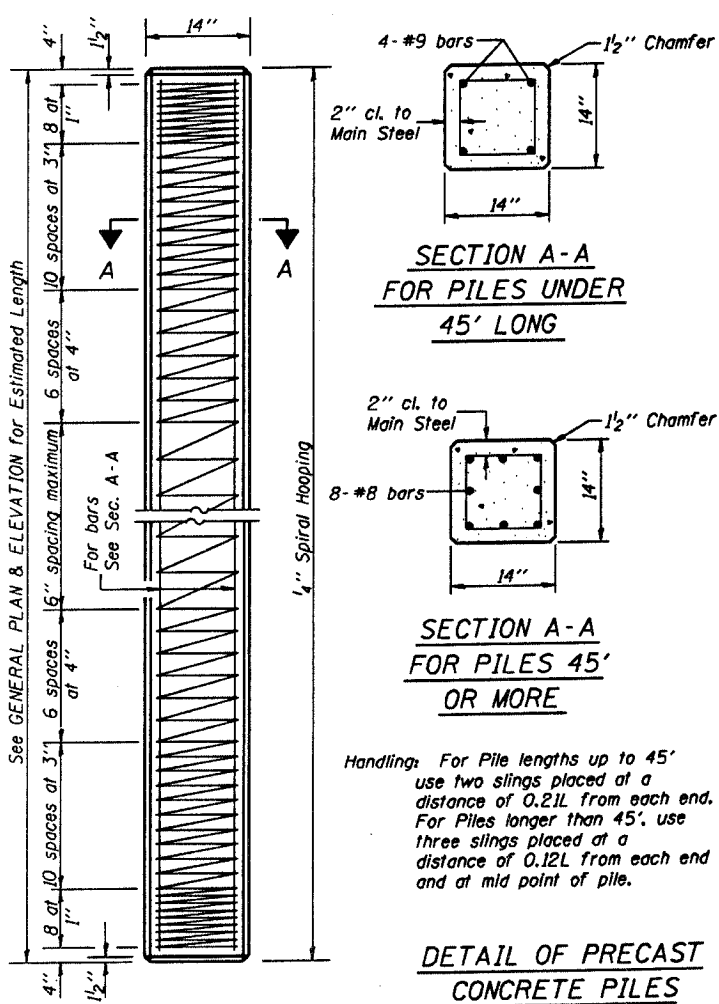


ROUTE	SECTION	COUNTY	TOWNSHIP	TOTAL SHEETS	SHEET NUMBER
T.R. 319	05-13136-00-BR	JACKSON	SEC. 3, T.10S, R.2W	15	14
JOB NO. C-99-550-05			PROJECT NO. BR05-077(43)		
ETHERTON ROAD			CONTRACT NO. 99249		

Reinforcement cage shall be omitted when Concrete Encasement is provided.

The cost of Reinforcement is included with the Cost of Furnishing Piles.



**QUANTITIES/FT. OF ENCASEMENT (STEEL PILES)**

Pile Size	Item	Quantity
HP8	Concrete Encasement	0.063 C.Y.
HP10	Concrete Encasement	0.086 C.Y.
HP12	Concrete Encasement	0.112 C.Y.

**(METAL SHELL PILES)**

Pile Size	Item	Quantity
12" Dia.	Concrete Encasement	0.087 C.Y.

**PILE DETAILS**

**STANDARD CX-1**

Illinois Department of Transportation  
 PASSED FEBRUARY 1, 2000  
 Approved by: *Thomas J. Nemecek*  
 Engineer of Bridge Design  
 APPROVED FEBRUARY 1, 2000  
 Approved by: *Ralph E. Anderson*  
 Engineer of Bridges and Structures