

STATE OF ILLINOIS
DEPARTMENT OF TRANSPORTATION
DIVISION OF HIGHWAYS

**PROPOSED
HIGHWAY PLANS**

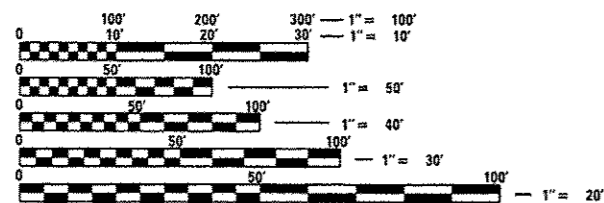
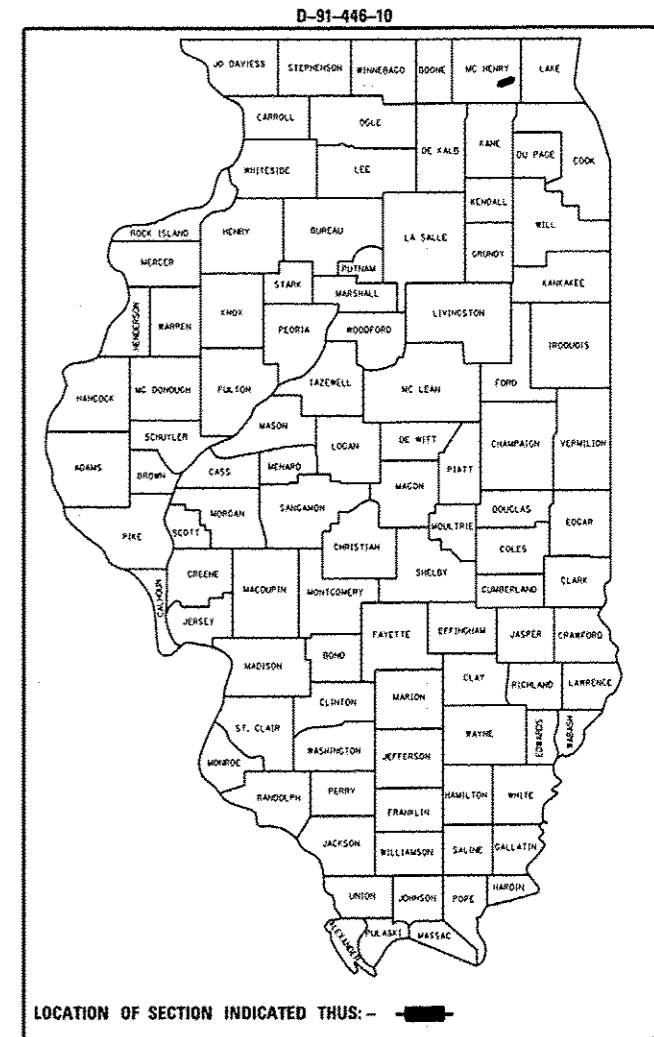
FAP ROUTE 335 / ILL 176
AT SMITH ROAD
SECTION: 146N-2
PROJECT: F-0335(018)

**TRAFFIC SIGNAL INSTALLATION & CHANNELIZATION
MCHENRY COUNTY
C-91-446-10**

F.A.P. RTE.	SECTION	COUNTY	TOTAL SHEETS	SHEET NO.
335	146N-2	MCHENRY	65	1
ILLINOIS			CONTRACT NO. 60K20	

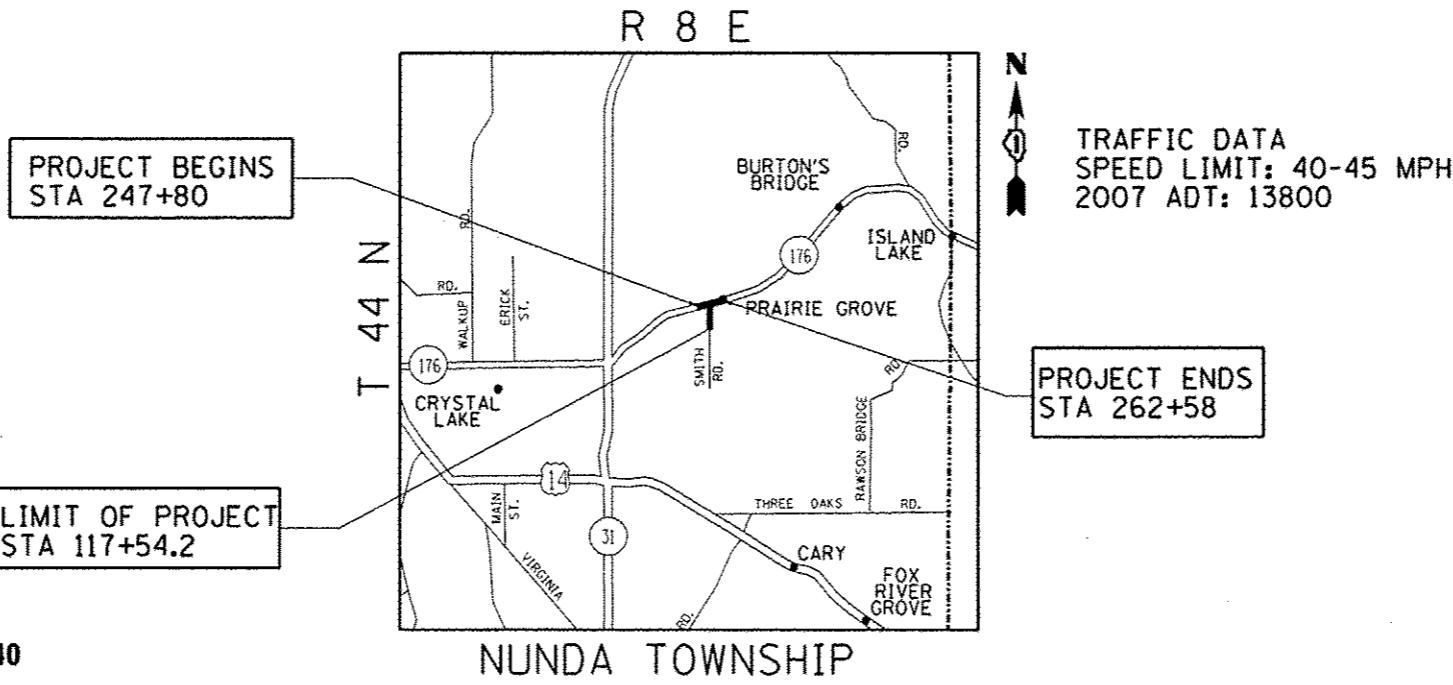
FOR INDEX OF SHEETS, SEE SHEET NO. 2

PROJECT IS LOCATED IN
UNINCORPORATED NUNDA TOWNSHIP



FULL SIZE PLANS HAVE BEEN PREPARED USING STANDARD ENGINEERING SCALES. REDUCED SIZED PLANS WILL NOT CONFORM TO STANDARD SCALES. IN MAKING MEASUREMENTS ON REDUCED PLANS, THE ABOVE SCALES MAY BE USED.

J.U.L.I.E.
JOINT UTILITY LOCATION INFORMATION FOR EXCAVATION
1-800-892-0123
OR 811



PROJECT ENGINEER: DAN WILGREEN (847) 705-4240
PROJECT MANAGER: KEN ENG

CONTRACT NO. 60K20

GROSS AND NET LENGTH OF PROJECT = 1,478 FEET (0.28 MILES)

STATE OF ILLINOIS
DEPARTMENT OF TRANSPORTATION
DIVISION OF HIGHWAYS

SUBMITTED December 7 20 13

John Fortman
DEPUTY DIRECTOR OF HIGHWAYS, REGION ENGINEER

Feb 1 20 13
John D. Baranelli, P.E.
ENGINEER OF DESIGN AND ENVIRONMENT

Feb 1 20 13
Omer Osman, P.E.
DIRECTOR OF HIGHWAYS, CHIEF ENGINEER

**PRINTED BY THE AUTHORITY
OF THE STATE OF ILLINOIS**