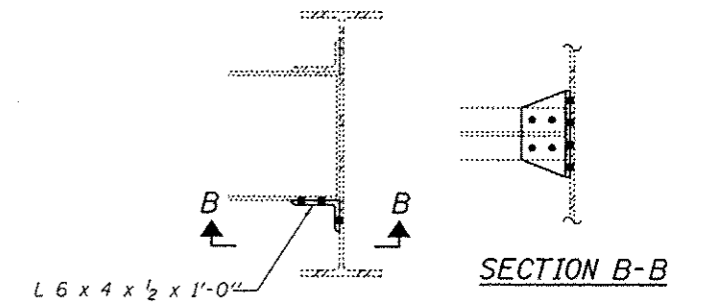
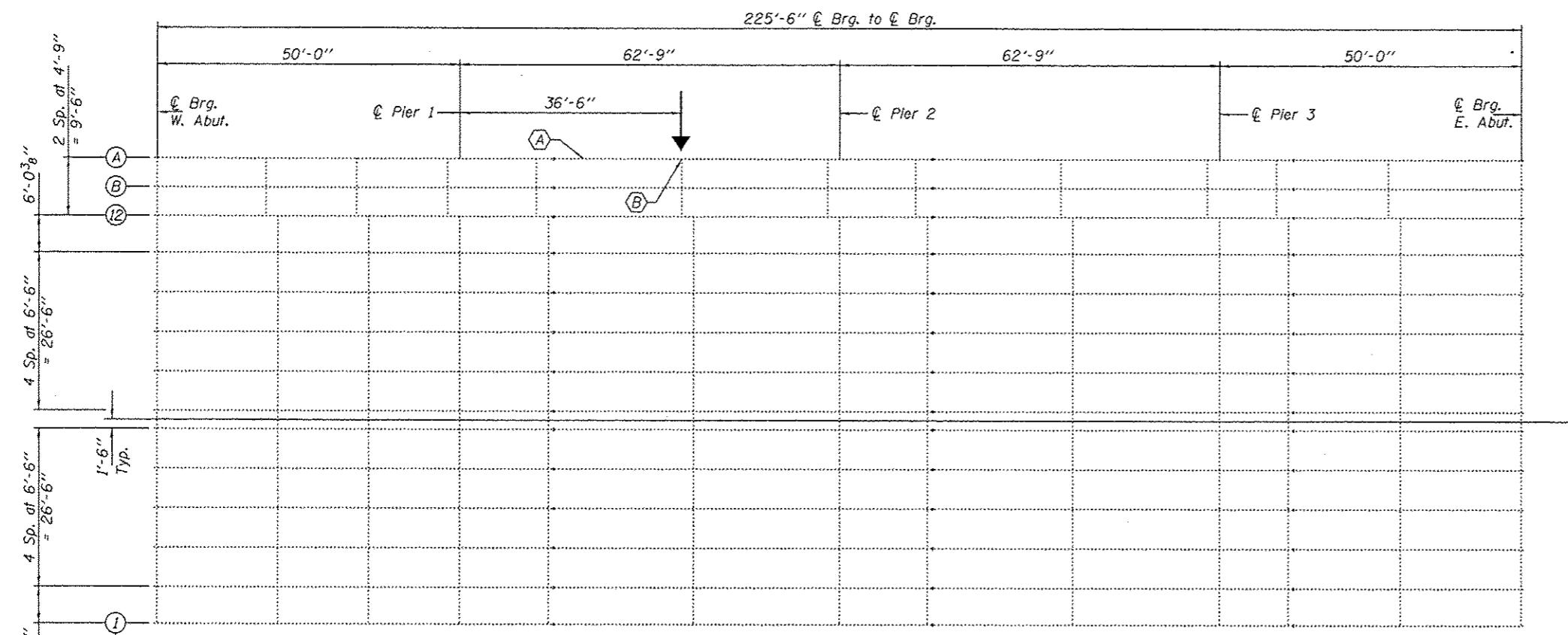
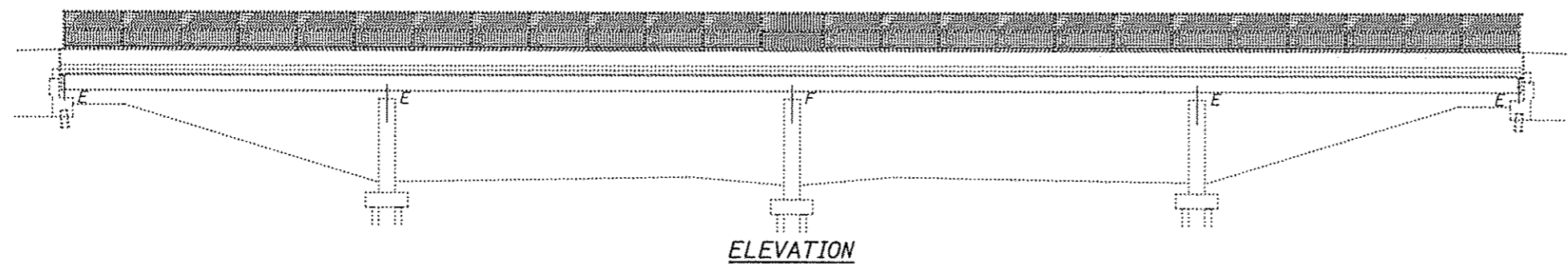


**GENERAL NOTES**

All structural steel shall conform to AASHTO Classification M-270 Gr. 36, unless otherwise noted.  
 Fasteners shall be high strength bolts. Bolts  $7/8"$   $\phi$ . open holes  $15/16"$   $\phi$ , unless otherwise noted.  
 After the new beam is in its final position and/or beam straightening operations have been completed, the Engineer in the field shall check to see that the top flange is tight against the slab. If not, the Contractor shall inject epoxy between the existing concrete deck and the top flange of the beam. See Special Provision "Epoxy Injection".  
 Plan dimensions and details relative to existing plans are subject to nominal construction variations. The Contractor shall field verify existing dimensions and details affecting new construction and make necessary approved adjustments prior to construction or ordering of materials. Such variations shall not be cause for additional compensation for a change in scope of the work, however, the Contractor will be paid for the quantity actually furnished at the unit price bid for the work.  
 The existing structural steel coating contains lead. The Contractor shall take appropriate precautions to deal with the presence of lead on this project.  
 Existing structural steel that will be in contact with new structural steel shall be cleaned and painted prior to erection as required by the Special Provision "Cleaning and Painting Contact Surface Areas of Existing Steel Structures".  
 All structural steel shall be shop painted with the inorganic zinc rich primer per AASHTO M300, Type 1. Cost included with Structural Steel Repair.

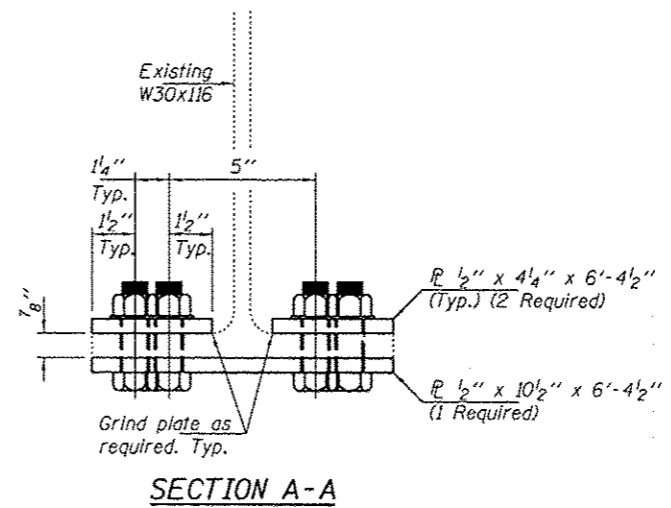
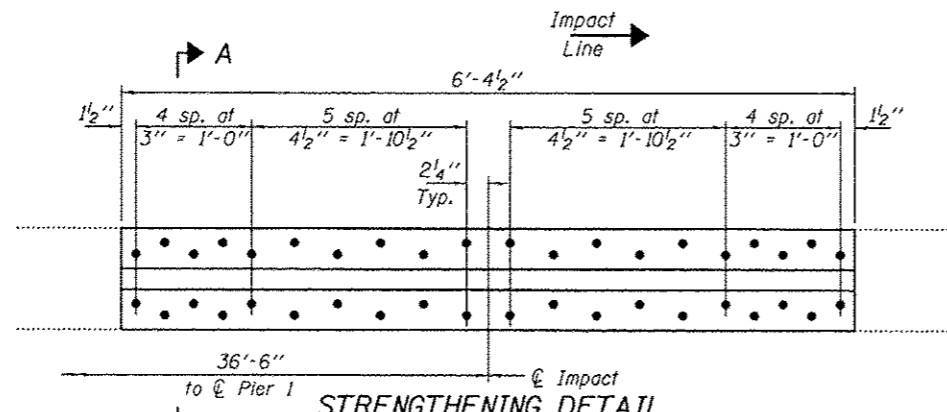


**CLIP ANGLE REPLACEMENT DETAIL**

Diaphragm connection holes shall be  $15/16"$   $\phi$  for  $3/4"$   $\phi$  bolts. Two hardened washers shall be required at diaphragm connections. Use holes in beam and diaphragm as template for drilling holes in angle.

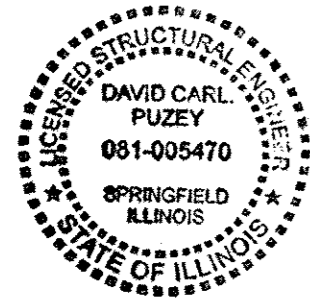
**FRAMING PLAN**

- (A) - Existing Beam to be Straightened & Strengthened.
- (B) - Replace bottom clip angle.



**TOTAL BILL OF MATERIAL**

ITEM	UNIT	QUANTITY
Structural Steel Repair	Pound	260
Beam Straightening	L.S.	0.5



EXPIRES 11-30-2014

DESIGNED: <i>[Signature]</i>	EXAMINED: <i>[Signature]</i>	DATE: JANUARY 9, 2013
CHECKED: <i>[Signature]</i>	PASSED: <i>[Signature]</i>	REVISED:
DRAWN: <i>[Signature]</i>	ACTING ENGINEER OF STRUCTURAL SERVICES	REVISED:
CHECKED: <i>[Signature]</i>	ACTING ENGINEER OF BRIDGES AND STRUCTURES	

STATE OF ILLINOIS  
DEPARTMENT OF TRANSPORTATION

PLAN AND ELEVATION  
LAKE AVE. OVER FAI 94  
SN 016-0545  
SHEET NO. 1 OF 2 SHEETS

F.A.I. RTE. 94	SECTION 2012-025BR	COUNTY COOK	TOTAL SHEETS 21	SHEET NO. 7
CONTRACT NO. 60T66			ILLINOIS FED. AID PROJECT	