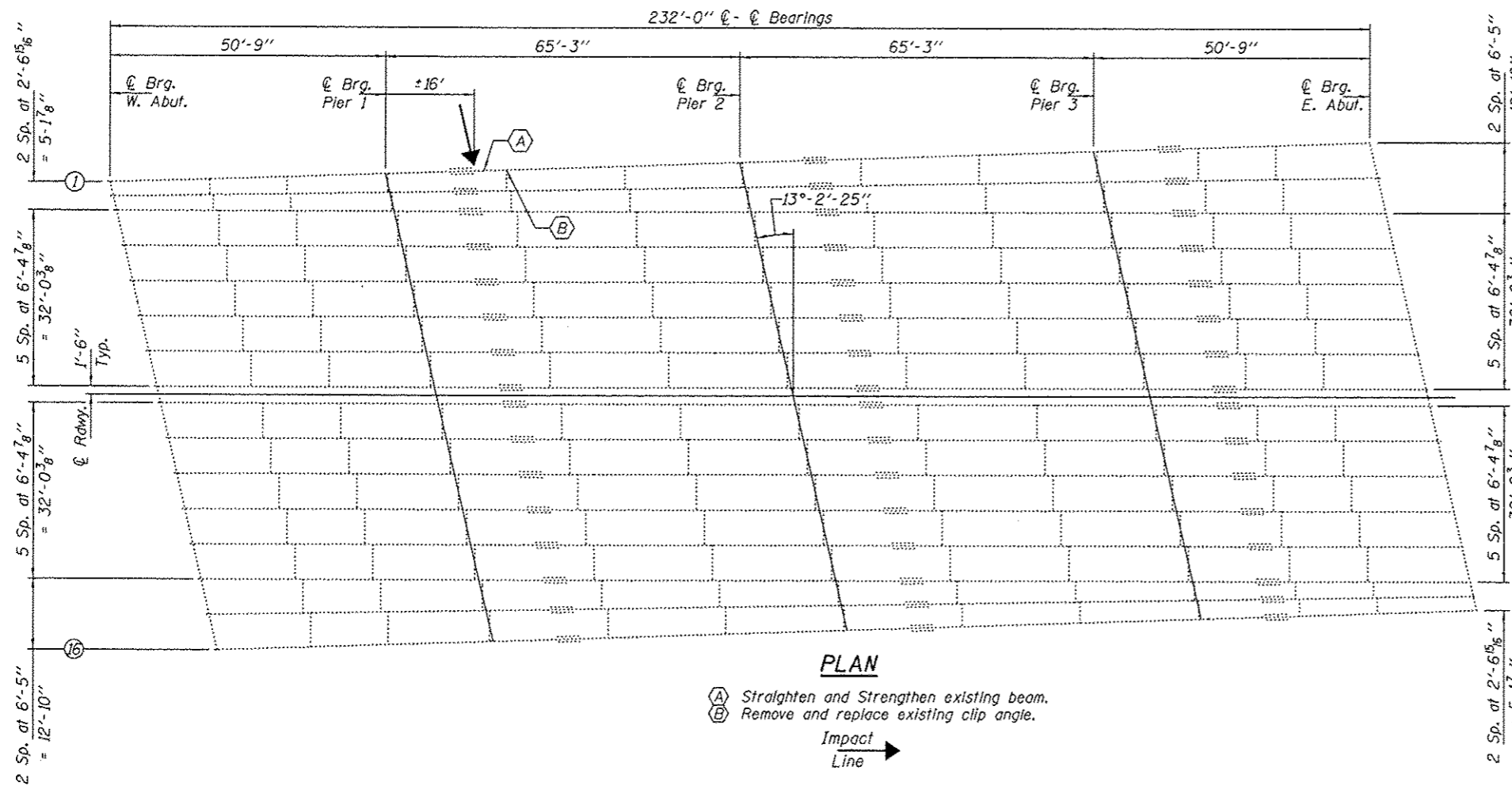
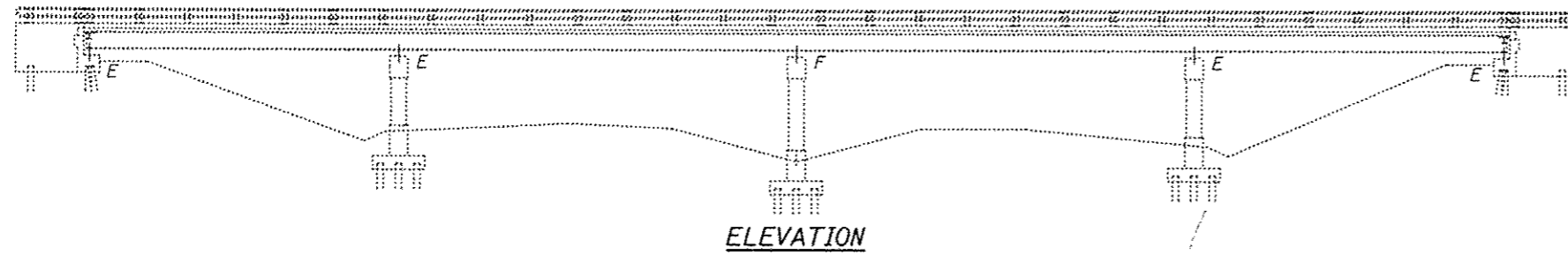
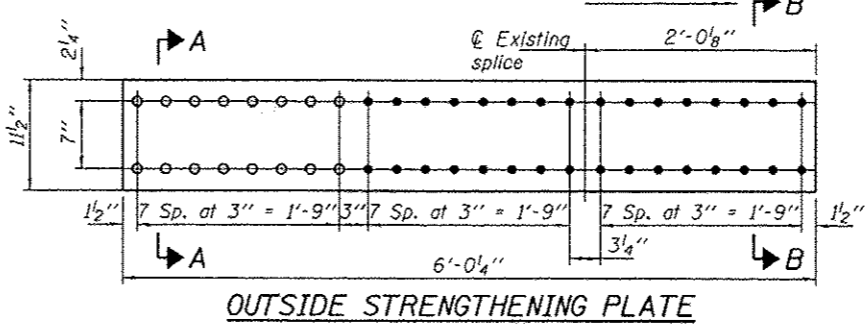
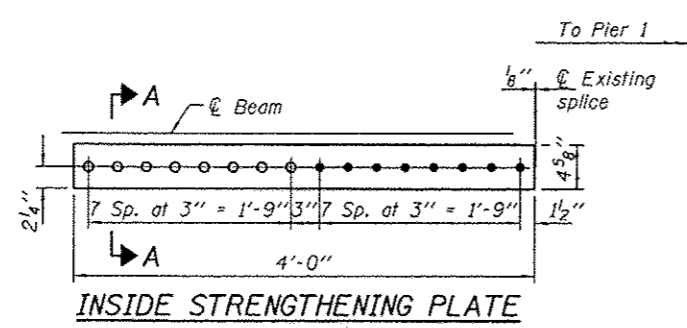
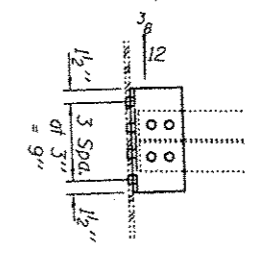


**GENERAL NOTES**

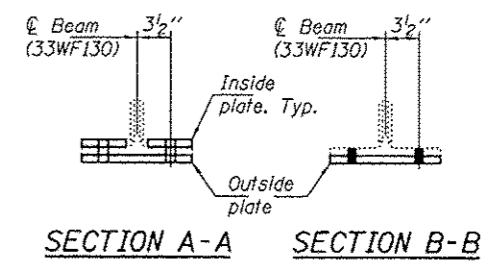
All structural steel shall conform to AASHTO Classification M-270 Gr. 36, unless otherwise noted.  
 Fasteners shall be high strength bolts. Bolts 7/8"φ, open holes 15/16"φ, unless otherwise noted.  
 Plan dimensions and details relative to existing plans are subject to nominal construction variations. The Contractor shall field verify existing dimensions and details affecting new construction and make necessary approved adjustments prior to construction or ordering of materials. Such variations shall not be cause for additional compensation for a change in scope of the work, however, the Contractor will be paid for the quantity actually furnished at the unit price bid for the work.  
 Cost of removal and re-installation of all members necessary to complete the work as detailed on the plans and as specified in the Special Provisions shall be included with Structural Steel Repair.  
 The existing structural steel coating contains lead. The Contractor shall take appropriate precautions to deal with the presence of lead on this project.  
 Existing structural steel that will be in contact with new structural steel shall be cleaned and painted prior to erection as required by the Special Provision "Cleaning and Painting Contact Surface Areas of Existing Steel Structures".  
 All structural steel shall be shop painted with the inorganic zinc rich primer per AASHTO M300, Type 1. Cost included with Structural Steel Repair.  
 Traffic to be removed from area over Beam 1 while splice is removed and replaced.



- (A) Straighten and Strengthen existing beam.
- (B) Remove and replace existing clip angle.



**CLIP ANGLE REPLACEMENT**



**TOTAL BILL OF MATERIAL**

ITEM	UNIT	QUANTITY
Structural Steel Repair	Pound	330
Beam Straightening	L.S.	0.5



EXPIRES 11-30-2014

DESIGNED: <i>Victor H. Vogel</i>	EXAMINED: <i>Timothy A. Dols</i>	DATE: JANUARY 9, 2013
CHECKED: <i>David Puzey</i>	PASSED: <i>David Puzey</i>	REVISED: _____
DRAWN: <i>balliva</i>	ACTING ENGINEER OF STRUCTURAL SERVICES	REVISED: _____
CHECKED: <i>David Puzey</i>	ACTING ENGINEER OF BRIDGES AND STRUCTURES	

STATE OF ILLINOIS  
DEPARTMENT OF TRANSPORTATION

PLAN AND ELEVATION  
FAU 1225 OVER US 41  
SN 049-0050  
SHEET NO. 1 OF 2 SHEETS

F.A.U. RTE. 1225	SECTION 2012-025BR	COUNTY LAKE	TOTAL SHEETS 21	SHEET NO. 9
CONTRACT NO. 60T66			ILLINOIS FED. AID PROJECT	