

INDEX OF SHEETS

FOR INDEX OF SHEETS, SEE SHEET NO. 2

PROJECT LOCATED IN THE VILLAGE OF LOMBARD AND UNINCORPORATED DUPAGE COUNTY, ILLINOIS

ILL. ROUTE 64 (NORTH AVE.)
 ADT = 58,300 (2011)
 DESIGN SPEED = 50 MPH
 POSTED SPEED = 45 MPH

PROJECT DESCRIPTION

THIS PROJECT IS TO IMPROVE SAFETY AT EXISTING TRAFFIC SIGNAL LOCATIONS FOR VEHICLES BY MODERNIZING TRAFFIC SIGNAL EQUIPMENT AND TRAFFIC SIGNAL COORDINATION

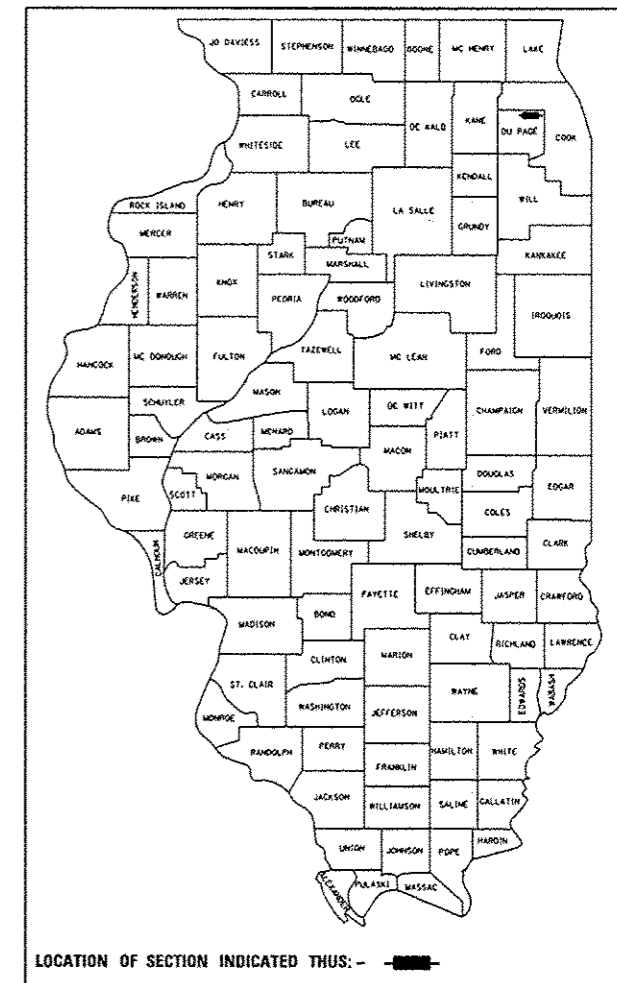


F.A.P. RTE.	SECTION	COUNTY	TOTAL SHEETS	SHEET NO.
307	2012-029-TS	DUPAGE	55	01
FED. ROAD DIST. NO.	ILLINOIS	CONTRACT NO. 60T80		

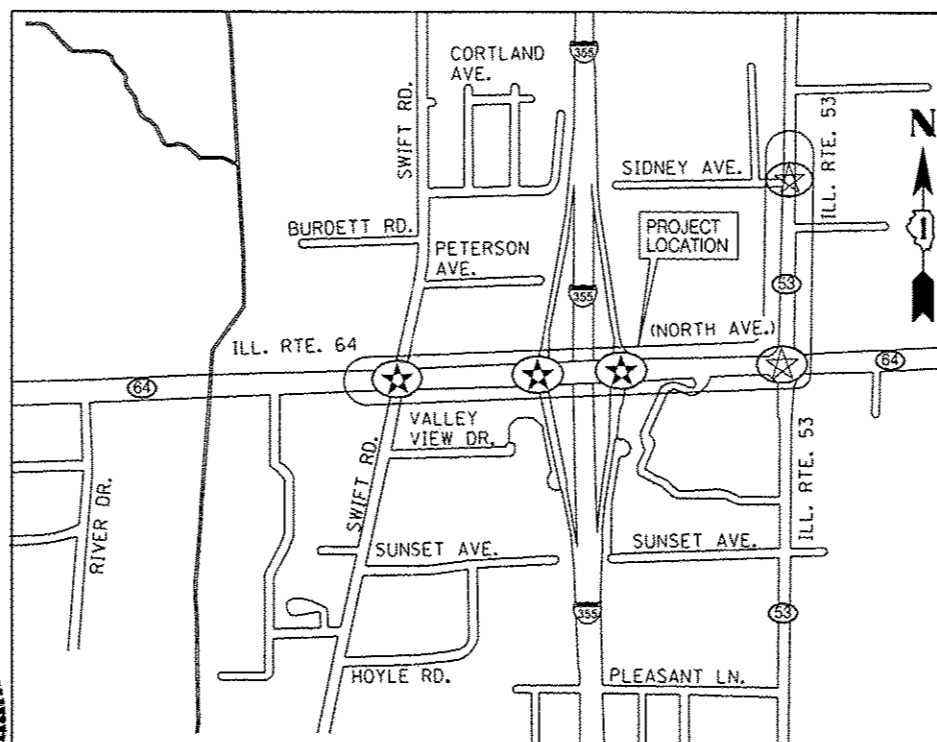
C-91-444-12

**STATE OF ILLINOIS
 DEPARTMENT OF TRANSPORTATION
 DIVISION OF HIGHWAYS
 PLANS FOR PROPOSED
 FEDERAL AID HIGHWAY**

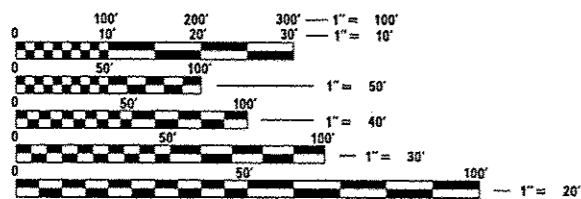
**DISTRICT 1
 HIGHWAY SAFETY IMPROVEMENT PROJECT (H.S.I.P.)
 TRAFFIC SIGNAL MODERNIZATION PLANS
 F.A.P. ROUTE 307 - ILL. ROUTE 64 (NORTH AVE.)
 FROM SWIFT RD. TO I-355 WB & EB RAMPS
 SECTION: 2012-029 TS
 IN THE VILLAGE OF LOMBARD, DUPAGE COUNTY
 C-91-444-12 PROJECT: HSIP-0307(037)**



LOCATION OF SECTION INDICATED THUS: - [shaded box] -



PROJECT LOCATION
 T39N, R10E, SECTION 1 AND T40N, R11E, SECTION 36
 LOMBARD TOWNSHIP, VILLAGE OF LOMBARD, DUPAGE COUNTY



FULL SIZE PLANS HAVE BEEN PREPARED USING STANDARD ENGINEERING SCALES. REDUCED SIZED PLANS WILL NOT CONFORM TO STANDARD SCALES. IN MAKING MEASUREMENTS ON REDUCED PLANS, THE ABOVE SCALES MAY BE USED.

J.U.L.I.E.
 JOINT UTILITY LOCATION INFORMATION FOR EXCAVATION
 1-800-892-0123
 OR 811



*P.K. Gandhi, 11/28/2012.
 Exp. 11/30/2013.*

DISTRICT 1 NO. (847) 705-4000
 PROJECT ENGINEER: DARYLE A. DREW
 UNIT CHIEF: SUDUD MAHMOUD
 CONTRACT NO. 60T80

STATE OF ILLINOIS
 DEPARTMENT OF TRANSPORTATION
 DIVISION OF HIGHWAYS

SUBMITTED Dec. 14 2012
John Fickman
 DEPUTY DIRECTOR OF HIGHWAYS, REGION ENGINEER

Feb 1 2013
John D. Baranzelli P.E.
 acting ENGINEER OF DESIGN AND ENVIRONMENT

Feb 1 2013
Omer Osman P.E.
 DIRECTOR OF HIGHWAYS, CHIEF ENGINEER

**PRINTED BY THE AUTHORITY
 OF THE STATE OF ILLINOIS**

BUREAU OF TRAFFIC - SUDUD MAHMOUD - (847) 705-4420