

F.A.P. RTE.	SECTION	COUNTY	TOTAL SHEETS	SHEET NO.
397	104TS-1(12)	COOK	38	1
FED. ROAD DIST. NO. -		ILLINOIS	CONTRACT NO. 60T92	

STATE OF ILLINOIS
DEPARTMENT OF TRANSPORTATION
DIVISION OF HIGHWAYS

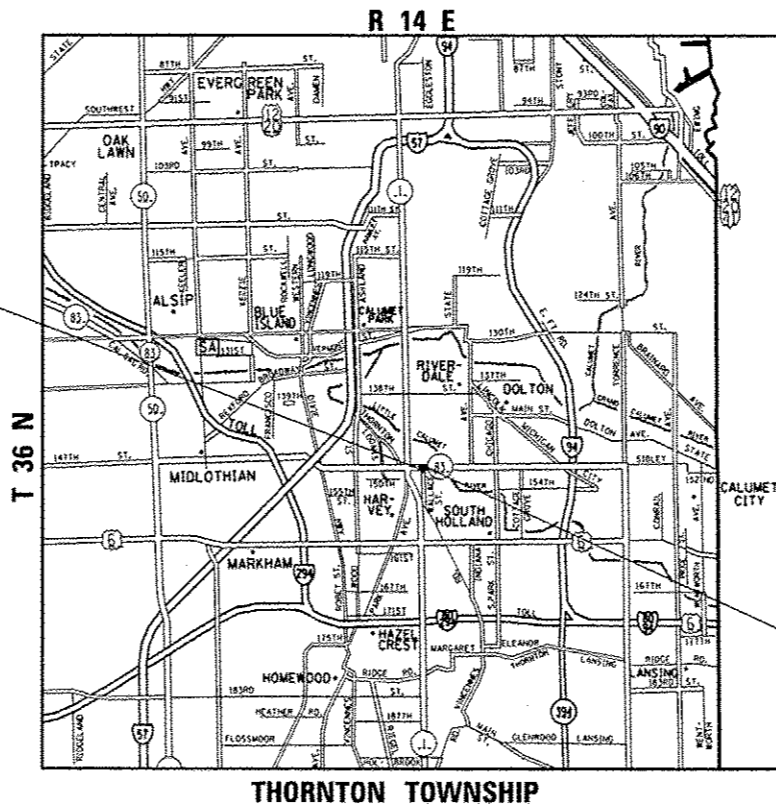
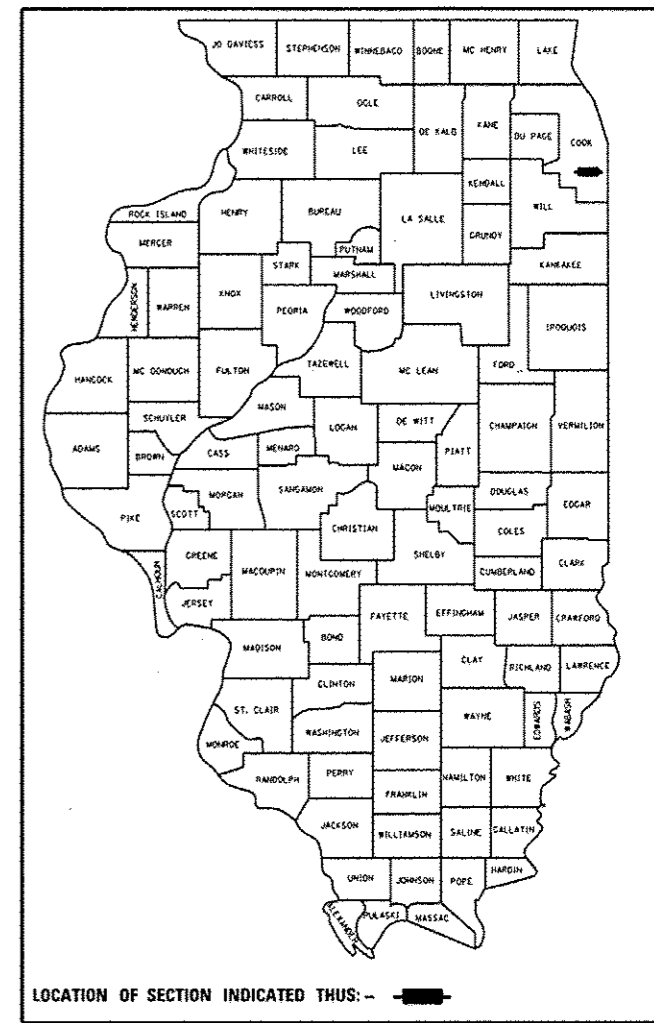
PROPOSED
HIGHWAY PLANS

FAP 397/ILL 83 (SIBLEY BOULEVARD)
AT WALLACE STREET
SECTION: 104TS-1(12)
TRAFFIC SIGNAL INSTALLATION; TIMING/PROGRESSION; RESURFACING
PROJECT: HSIP-0397(005)
COOK COUNTY
C-91-500-12

FOR INDEX OF SHEETS, SEE SHEET NO. 2

PROJECT IS LOCATED IN THE CITY OF HARVEY

D -91-500-12

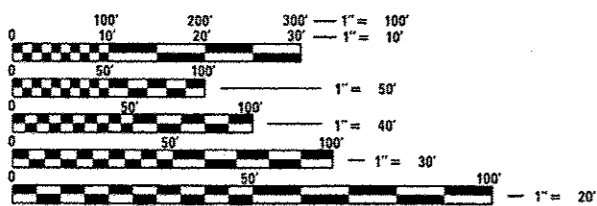


PROJECT BEGINS STA. 17+38

TRAFFIC DATA

2009 ADT = 29,600
 POSTED SPEED LIMIT = 35 MPH

PROJECT ENDS STA. 26+36



FULL SIZE PLANS HAVE BEEN PREPARED USING STANDARD ENGINEERING SCALES. REDUCED SIZED PLANS WILL NOT CONFORM TO STANDARD SCALES. IN MAKING MEASUREMENTS ON REDUCED PLANS, THE ABOVE SCALES MAY BE USED.

J.U.L.I.E.
 JOINT UTILITY LOCATION INFORMATION FOR EXCAVATION
 1-800-892-0123
 OR 811

PROJECT ENGINEER KARI SMITH (847) 705-4437
 PROJECT MANAGER KEN ENG (847) 705-4247

CONTRACT NO. 60T92

GROSS AND NET LENGTH OF IMPROVEMENT = 898.00 LINEAL FEET = 0.17 MILE

STATE OF ILLINOIS
 DEPARTMENT OF TRANSPORTATION
 DIVISION OF HIGHWAYS

SUBMITTED December 20, 2012

John Erik Mann
 DEPUTY DIRECTOR OF HIGHWAYS, REGION ENGINEER

Feb 1 2013
John D. Baranowski, P.E.
 acting ENGINEER OF DESIGN AND ENVIRONMENT

Feb 1 2013
Omer Osman, P.E.
 DIRECTOR OF HIGHWAYS, CHIEF ENGINEER

PRINTED BY THE AUTHORITY
OF THE STATE OF ILLINOIS