

F.A.I. RTE.	SECTION	COUNTY	TOTAL SHEET NO.
80	2012-0711	WILL/COOK	1

CONTRACT NO. 60V81
*374239

STATE OF ILLINOIS
DEPARTMENT OF TRANSPORTATION

DIVISION OF HIGHWAYS

PROPOSED
HIGHWAY PLANS

F.A.I. 80 (MOLINE EXPRESSWAY) I-80
80TH AVENUE TO INTERSTATE 57
SECTION 2012-0711
PROJECT: ESP-080-5(071)149
FIBER OPTIC CABLE INSTALLATION
WILL AND COOK COUNTY

D-91-080-13



LOCATION OF SECTION INDICATED THUS: -

FUNCTIONAL CLASSIFICATION
INTERSTATE (URBAN)
2012 ADT = 122,700

IMPROVEMENTS LOCATED IN THE VILLAGES
OF TINLEY PARK AND COUNTRY CLUB HILLS

FOR INDEX OF SHEETS, SEE SHEET NO. 2

BEGIN IMPROVEMENT
STA 10+00

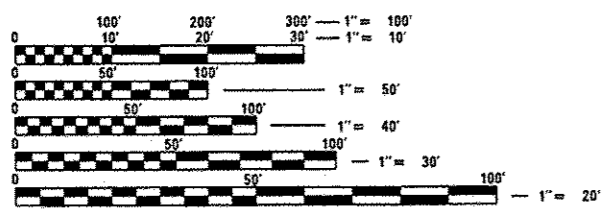
END IMPROVEMENT
STA 263+00



Isaac Yun 12/21/2012
ISAAC YUN, P.E.
LICENSE NO.: 062-062257
EXPIRES: 11-30-2013
SHEETS: 1-7

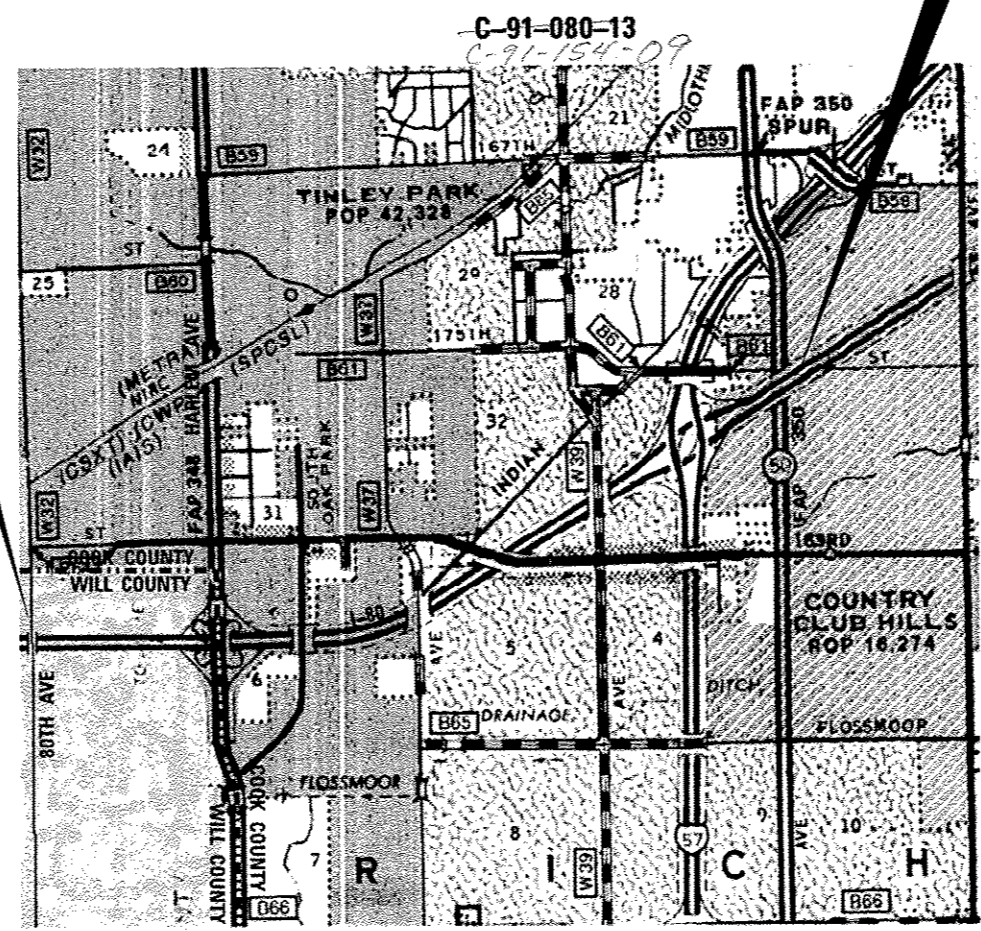


Angela C. Giovannone 12/21/2012
ANGELA GIOVANNONE, P.E.
LICENSE NO.: 062-057957
EXPIRES: 11-30-2013
SHEETS: 8-27



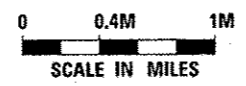
FULL SIZE PLANS HAVE BEEN PREPARED USING STANDARD
ENGINEERING SCALES. REDUCED SIZED PLANS WILL NOT
CONFORM TO STANDARD SCALES. IN MAKING MEASUREMENTS
ON REDUCED PLANS, THE ABOVE SCALES MAY BE USED.

J.U.L.I.E.
JOINT UTILITY LOCATION INFORMATION FOR EXCAVATION
1-800-892-0123
OR 811



PROJECT ENGINEER: ROLAND TOMSONS
PROJECT MANAGER: MARK JENKINS

CONTRACT NO. 60V81



TOWNSHIPS: FRANKFORT, RICH & BREMEN
GROSS LENGTH = 25,300 FT. = 4.792 MILE
NET LENGTH = 25,300 FT. = 4.792 MILE



PRINTED BY THE AUTHORITY
OF THE STATE OF ILLINOIS

Rev. 2-20-13

DISTRICT ONE / ELECTRICAL / MARK JENKINS (847)-705-4350

INDEX OF SHEETS

- 1 COVER SHEET
- 2 INDEX OF SHEETS, HIGHWAY STANDARDS AND GENERAL NOTES
- 3-4 SUMMARY OF QUANTITIES
- 5-7 ALIGNMENT AND TIES
- 8 ITS GENERAL NOTES & LEGEND
- 9-26 FIBER OPTIC CABLE INSTALLATION PLAN I-80
- 27 FIBER OPTIC CABLE SINGLE LINE DIAGRAM
- 28 BRIDGE CROSSING DETAIL
- * 29-37 DISTRICT ONE STANDARD DETAILS

* 37A, 37B Added

HIGHWAY STANDARDS

- 000001-06 STANDARD SYMBOLS, ABBREVIATIONS AND PATTERNS
- 001006 DECIMAL OF AN INCH AND OF A FOOT
- 836001-02 CONCRETE FOUNDATIONS
- 814001-02 CONCRETE HANDHOLES
- 701101-03 OFF-ROAD OPERATIONS, MULTILANE, 15' (4.5m) TO 24" (600mm) FROM PAVEMENT EDGE
- 701106-02 OFF-ROAD OPERATIONS, MULTILANE, MORE THAN 15' (4.5m) AWAY
- 701400-06 APPROACH TO LANE CLOSURE, FREEWAY/EXPRESSWAY
- 701401-07 LANE CLOSURE, FREEWAY/EXPRESSWAY
- 701901-02 TRAFFIC CONTROL DEVICES

DISTRICT 1 STANDARD DETAILS

- BE-705 COMMUNICATIONS VAULT, COMPOSITE CONCRETE
- BE-2100 TRUNK CABLE FIBER ASSIGNMENTS, FAI 80 FROM BOTH AVE TO I-57
- BE-2110 DISTRIBUTION CABLE FIBER ASSIGNMENTS, FAI 80 FROM BOTH AVE TO I-57
- BE-2130 TWELVE FIBER LATERAL CABLE FIBER ASSIGNMENTS
- TC-17 TRAFFIC CONTROL DETAILS FOR FREEWAY SHOULDER CLOSURES AND PARTIAL RAMP CLOSURES
- TC-18 SIGNING FOR FLAGGING OPERATIONS AT WORK ZONE OPENINGS
- TC-22 ARTERIAL ROAD INFORMATION SIGN
- TS-03 HANDHOLE TO INTERCEPT EXISTING CONDUIT

GENERAL NOTES

1. ALL WORK SHALL BE PERFORMED IN ACCORDANCE WITH THE LATEST CODES, STANDARDS AND THE IDOT STANDARD SPECIFICATIONS FOR ROAD AND BRIDGE CONSTRUCTION ADOPTED JANUARY 1, 2013, AND SUPPLEMENTAL SPECIFICATIONS AND RECURRING SPECIAL PROVISIONS.
2. BEFORE STARTING ANY EXCAVATION, THE CONTRACTOR SHALL CALL JULIE AT 800-892-0123 OR 811 FOR FIELD LOCATIONS OF BURIED ELECTRIC, TELEPHONE, AND GAS FACILITIES. (48 HOUR NOTIFICATION IS REQUIRED.)
3. THE LOCATION OF EXISTING FACILITIES, AS SHOWN ON THE DRAWINGS, REPRESENT DATA RECEIVED FROM VARIOUS SOURCES. IT IS NOT GUARANTEED TO BE CORRECT OR ALL INCLUSIVE. THE CONTRACTOR SHALL CONDUCT HIS OWN INVESTIGATION INTO THE LOCATION, SIZE, CONFIGURATION AND NATURE OF ANY AND ALL EXISTING FACILITIES WHICH MAY INTERFERE WITH THE WORK UNDER THIS CONTRACT. ANY EXISTING FACILITIES (FIBER OPTIC CABLE, ELECTRIC OR ANY OTHER COMMUNICATIONS CABLES OR EQUIPMENT) NEAR PROPOSED WORK AREAS WHICH ARE TO REMAIN IN SERVICE SHALL BE RECONFIGURED AND BE FULLY PROTECTED BY THE CONTRACTOR. ANY DAMAGE CAUSED BY THE CONSTRUCTION OPERATIONS SHALL BE IMMEDIATELY REPAIRED AT NO ADDITIONAL COST TO IDOT TO THE SATISFACTION OF THE ENGINEER.
4. THE CONTRACTOR SHALL COORDINATE CONSTRUCTION ACTIVITIES WITH AFFECTED UTILITY COMPANIES AND MUNICIPALITIES. THE CONTRACTOR SHALL USE ALL NECESSARY PRECAUTIONS AND PROTECTIVE MEASURES REQUIRED TO MAINTAIN EXISTING UTILITIES AND THEIR OPERATION.
5. THE CONTRACTOR WILL NOT BE ALLOWED TO SET UP A YARD OR FIELD OFFICE ON STATE PROPERTY WITHOUT WRITTEN PERMISSION FROM THE DEPARTMENT.
6. WHEN ARTIFICIAL LIGHTING IS USED IN NIGHT OPERATIONS THE CONTRACTOR SHALL EXERCISE THE UTMOST PRECAUTIONS IN PREVENTING ADVERSE VISIBILITY TO THE MOTORING PUBLIC AND ADJOINING RESIDENTIAL AREAS.
7. ALL FRAMES, GRATES, PAVEMENT, FENCES, DELINEATORS AND APPURTENANCES DAMAGED BY THE CONTRACTOR DURING CONSTRUCTION WILL BE REPLACED BY THE CONTRACTOR AT THEIR EXPENSE.
8. THE ENGINEER SHALL CONTACT THE TRAFFIC CONTROL SUPERVISOR AT (847) 705-4155 A MINIMUM OF 72 HOURS PRIOR TO THE START OF WORK.
9. IT IS THE CONTRACTOR'S RESPONSIBILITY TO VERIFY ALL DIMENSIONS, ELEVATIONS, AND EXISTING FIELD CONDITIONS PRIOR TO BIDDING, ORDERING MATERIALS, OR BEGINNING OF CONSTRUCTION ON THIS PROJECT, SPECIFICALLY AS THEY RELATE TO LUMP SUM ITEMS.
10. CONTRACTOR SHALL INSTALL CONDUIT EXPANSION/DEFLECTION COUPLING AT STRUCTURE JOINTS AS NEEDED PER BRIDGE CROSSING DETAILS AT NO ADDITIONAL COST.
11. ALL DAMAGE TO DEPARTMENT OWNED UNDERGROUND FACILITIES CAUSED BY THE CONTRACTOR, SHALL BE REPAIRED TO THE SATISFACTION OF THE DEPARTMENT AT THE CONTRACTOR'S EXPENSE. THIS SHALL INCLUDE ALL TEMPORARY REPAIRS REQUIRED TO KEEP THE FACILITY OPERATIONAL WHILE MATERIAL IS BEING OBTAINED TO MAKE PERMANENT REPAIRS. SPLICING OF FIBER OPTIC CABLE SHALL NOT BE ALLOWED. FIBER OPTIC CABLE SHALL BE REPLACED FROM COMMUNICATION VAULT TO COMMUNICATION VAULT.
12. FLUORESCENT VESTS AND HARD HATS: ALL CONSTRUCTION PERSONNEL WILL BE REQUIRED TO WEAR FLUORESCENT ORANGE, FLUORESCENT YELLOW/GREEN OR A COMBINATION OF FLUORESCENT ORANGE AND FLUORESCENT YELLOW/GREEN VESTS AND HARD HATS AT ALL TIMES WHILE ON THE CONSTRUCTION SITE.
13. DURING CONSTRUCTION OPERATIONS THE CONTRACTOR SHALL TAKE NECESSARY PRECAUTIONS TO PROTECT ADJACENT EQUIPMENT FROM DAMAGE OR INTERFERENCE. THE CONTRACTOR SHALL ALSO BE RESPONSIBLE FOR KEEPING THE WORK AREA FREE FROM DEBRIS. THIS WORK SHALL BE INCIDENTAL TO THE CONTRACT.
14. THE STANDARD DRAWINGS LISTED IN THE PLANS INDEX ARE INTENDED TO BE THE LATEST REVISIONS AND SHALL TAKE PRECEDENCE OVER EARLIER REVISIONS THAT MAY BE REFERRED TO ELSEWHERE IN THE PLANS OR SPECIAL PROVISIONS.

TRAFFIC CONTROL PLAN NOTES

1. TRAFFIC CONTROL AND PROTECTION SHALL CONSIST OF SHOULDER AND LANE CLOSURES TO ALLOW WORK OFF THE EDGE OF TRAVELED WAY AND AT BRIDGES, IN ACCORDANCE WITH FOLLOWING IDOT HIGHWAY STANDARDS AND DISTRICT ONE STANDARDS FOR TRAFFIC CONTROL:

701101-03	OFF-ROAD OPERATIONS, MULTILANE, 15' (4.5 m) TO 24" (600 mm) FROM PAVEMENT EDGE
701106-02	OFF-ROAD OPERATIONS, MULTILANE, MORE THAN 15' (4.5 m) AWAY
701400-06	APPROACH TO LANE CLOSURE, FREEWAY/EXPRESSWAY
701401-07	LANE CLOSURE, FREEWAY/EXPRESSWAY
701901-02	TRAFFIC CONTROL DEVICES
TC-17	TRAFFIC CONTROL FOR SHOULDER CLOSURES AND PARTIAL RAMP CLOSURES
TC-18	SIGNING FOR FLAGGING OPERATIONS AT WORK ZONE
TC-22	ARTERIAL ROAD INFORMATION SIGN

THESE STANDARDS WILL NOT BE PAID FOR AS SEPARATELY BUT WILL BE INCLUDED IN THE PRICE FOR TRAFFIC CONTROL AND PROTECTION (EXPRESSWAYS) AS A LUMP SUM PAY ITEM.
2. THE CONTRACTOR SHALL MAINTAIN TRAFFIC IN ACCORDANCE WITH IDOT SPECIAL PROVISIONS, IDOT HIGHWAY STANDARDS, IDOT STANDARD SPECIFICATIONS, PLAN SPECIFICATIONS, AND AS DIRECTED BY THE ENGINEER.
3. THE CONTRACTOR SHALL COORDINATE CONSTRUCTION STAGING AND TRAFFIC CONTROL WORK WITH ADJOINING OR OVERLAPPING CONTRACTS. THE COST OF ANY ADDITIONAL TRAFFIC CONTROL AND/OR TEMPORARY CONSTRUCTION ITEMS REQUIRED FOR SUCH COORDINATION WILL NOT BE PAID FOR SEPARATELY BUT SHALL BE INCLUDED IN THE CONTRACT UNIT PRICE FOR "TRAFFIC CONTROL AND PROTECTION (EXPRESSWAYS)."
4. THE TRAFFIC CONTROL PLAN SHALL SERVE AS A GUIDE FOR SAFE DIVERSION OF TRAFFIC DURING EXECUTION OF THIS CONTRACT. HOWEVER, THE CONTRACTOR MAY IMPROVE OR MODIFY THE TRAFFIC CONTROL PLAN TO MEET CONSTRUCTION NEEDS BUT NOT AT THE EXPENSE OF PUBLIC SAFETY OR CONVENIENCE. ANY CHANGES TO THE TRAFFIC CONTROL PLAN SHALL BE SUBMITTED TO THE ENGINEER FOR APPROVAL.
5. THE ENGINEER SHALL BE INFORMED 21 DAYS IN ADVANCE OF ANY CHANGE TO THE TRAFFIC CONTROL PLAN.
6. TRAFFIC CONDITIONS, ACCIDENTS AND OTHER UNFORSEEN EMERGENCY CONDITIONS MAY REQUIRE THE ENGINEER TO RESTRICT, MODIFY OR REMOVE LANE CLOSURES OR CHANNELIZATIONS PER THE TRAFFIC CONTROL PLAN. THE CONTRACTOR SHALL MAKE THE NECESSARY ADJUSTMENTS DIRECTED BY THE ENGINEER WITHOUT DELAY. THE CONTRACTOR SHALL RESPOND WITHIN 30 MINUTES FROM THE TIME OF NOTIFICATION BY THE ENGINEER TO ANY REQUEST MADE BY THE ENGINEER FOR CORRECTION, IMPROVEMENT, OR MODIFICATION OF THE MAINTENANCE OF TRAFFIC CONTROL DEVICES.
7. ALL TRAFFIC CONTROL DEVICES USED FOR TRAFFIC CONTROL AND PROTECTION SHALL BE REFLECTORIZED PRIOR TO INSTALLATION AND CLEANED AS SPECIFIED IN TRAFFIC CONTROL AND PROTECTION SPECIAL PROVISIONS OR AS DIRECTED BY THE ENGINEER.
8. THE CONTRACTOR SHALL COVER OR REMOVE ALL CONFLICTING EXISTING SPEED LIMIT SIGNS, GUIDE SIGNS, OR ANY OTHER CONFLICTING SIGNS FOR THE DURATION OF THE CONSTRUCTION. THE CONTRACTOR SHALL SUBMIT THE METHOD IN WHICH THE SIGNS WILL BE COVERED TO THE ENGINEER FOR APPROVAL.
9. LOCATIONS OF CHANGEABLE MESSAGE SIGNS SHALL BE DETERMINED BY THE ENGINEER.
10. DRUMS OR TYPE II BARRICADES AND VERTICAL PANELS SHALL BE EQUIPPED WITH MONODIRECTIONAL STEADY BURN LIGHTS AND SHALL BE PLACED AT 50' INTERVALS ALONG WORK ZONES, AT 25' INTERVALS IN CURVES, AND AT 25' INTERVALS IN TAPER SECTIONS AS INDICATED IN THE IDOT HIGHWAY STANDARDS OR AS DIRECTED BY THE ENGINEER. TYPE II BARRICADES SHALL HAVE A MINIMUM REFLECTORIZED AREA OF 288 SQUARE INCHES AND BE 2' IN WIDTH.
11. THE FURNISHING, INSTALLING, AND RELOCATION OF ALL TRAFFIC SIGNS SHALL BE IN ACCORDANCE WITH THE MANUAL ON UNIFORM TRAFFIC CONTROL DEVICES FOR STREETS AND HIGHWAYS (MUTCD), ILLINOIS SUPPLEMENT TO THE MUTCD, IDOT SPECIAL PROVISIONS, IDOT HIGHWAY STANDARDS, IDOT STANDARD SPECIFICATIONS, CONTRACT SPECIFICATIONS, AND AS DIRECTED BY THE ENGINEER. ALL CONFLICTING TRAFFIC SIGNS SHALL BE COVERED AS DIRECTED BY THE ENGINEER. THIS WORK SHALL BE INCLUDED IN THE COST FOR TRAFFIC AND PROTECTION (EXPRESSWAYS).
12. THE CONTRACTOR SHALL PROVIDE ADVANCE NOTICE OF CONSTRUCTION SIGNING. SIGNS SHALL BE ERECTED ONE WEEK IN ADVANCE OF THE START OF CONSTRUCTION AND SHALL BE REMOVED OR COVERED WHEN PROTECTION IS NOT REQUIRED.
13. ALL ARROW BOARDS SHALL HAVE SOLAR POWER CAPABILITY.
14. ALL TRAFFIC CONTROL DEVICES SHALL BE REMOVED, COVERED OR TURNED AWAY FROM THE TRAFFIC IMMEDIATELY WHEN THEY ARE NO LONGER NECESSARY. WHEN A SIGN IS COVERED, ITS POST SHALL HAVE A REFLECTIVE 3" BY 6" DELINEATOR INSTALLED.

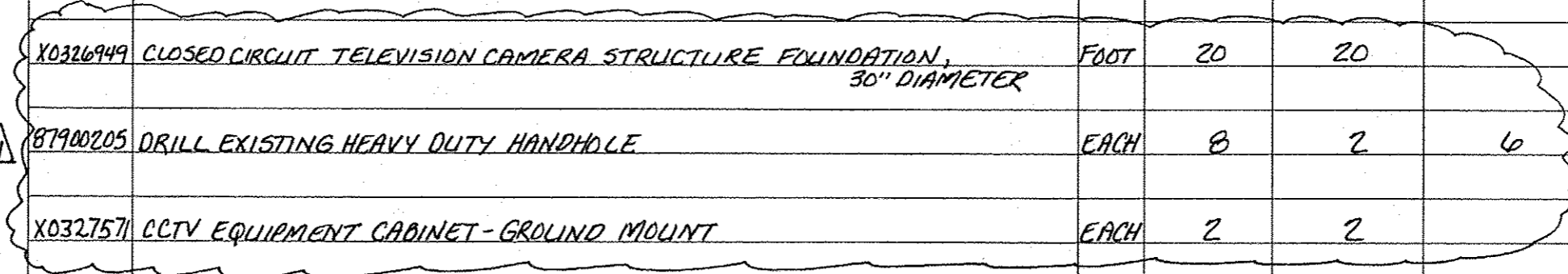
NOTE: BOXED ITEMS ARE INCLUDED IN THE COST OF THE CONTRACT.

Rev. 2-2013

SINGH
SINGH & ASSOCIATES INC.
CONSULTING ENGINEERS

FILE NAME J:\293\Task-3\00\CH\CADD Sheets\60V81\DI\04\01-shs82-gannota.dgn	USER NAME * USER V81-shs82-gannota.dgn	DESIGNED - OB	REVISED -	STATE OF ILLINOIS DEPARTMENT OF TRANSPORTATION	INDEX OF SHEETS, HIGHWAY STANDARDS AND GENERAL NOTES	F.A.I. RTE. 80	SECTION 2012-0711	COUNTY WILL/COOK	TOTAL SHEETS 37	SHEET NO. 2	
PLOT SCALE = 58.0000 / in.				CHECKED - IV		CONTRACT NO. 60V81					
PLOT DATE = 12/19/2012				DATE = 12/21/2012							
SCALE: N/A						ILLINOIS FED. AID PROJECT					

CODE NO.	ITEM	UNIT	TOTAL QUANTITY	100% FED.	
				CONSTRUCTION CODE	
				WILL COUNTY ROADWAY	COOK COUNTY ROADWAY
				0043 URBAN	0043 URBAN
X0326946	CLOSED CIRCUIT TELEVISION CAMERA INSTALLATION	EACH	2	2	
X0326948	CLOSED CIRCUIT TELEVISION CAMERA STRUCTURE, 50 FT. MOUNTING HEIGHT	EACH	2	2	
X0326964	FIBER OPTIC INTERCONNECT CABINET	EACH	1	1	
X7011015	TRAFFIC CONTROL AND PROTECTION (EXPRESSWAYS)	L SUM	1	0.3	0.7
X8710035	FIBER OPTIC CABLE 96 FIBERS, SINGLE MODE	FOOT	56,538	14,968	41,570
X8710036	FIBER OPTIC CABLE 12 FIBERS, SINGLE MODE	FOOT	2,387	389	1,998
X0327561	BUDGETARY ALLOWANCE FOR CCTV INTEGRATION	L SUM	1	0.3	0.7
X0327562	CCTV CAMERA CONTROLLER	EACH	2	2	
X0327563	MODIFY EXISTING CONTROLLER FOR CCTV POWER	EACH	2	2	
X0326949	CLOSED CIRCUIT TELEVISION CAMERA STRUCTURE FOUNDATION, 30" DIAMETER	FOOT	20	20	
X87900205	DRILL EXISTING HEAVY DUTY HANDHOLE	EACH	8	2	6
X0327571	CCTV EQUIPMENT CABINET - GROUND MOUNT	EACH	2	2	



* SPECIALTY ITEM

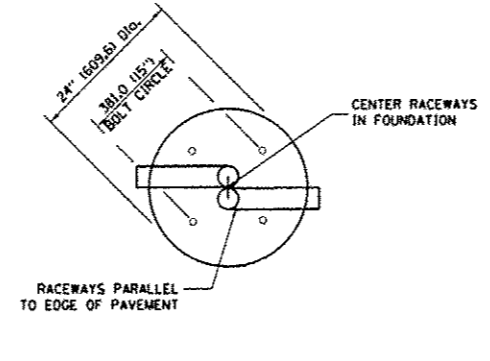
Rev. 2-20-13

SINGH
CONSULTANTS

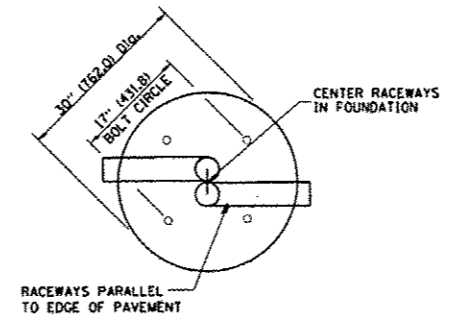
FILE NAME J:\293\Task-3\00\CADD Sheets\60V81\01\60V81-shd4-5002.dgn	USER NAME * USER	DESIGNED - OB	REVISED -	STATE OF ILLINOIS DEPARTMENT OF TRANSPORTATION	SUMMARY OF QUANTITIES	F.A.I. RTE. 80	SECTION 2012-0711	COUNTY WILL/COOK	TOTAL SHEETS 37	SHEET NO. 4		
PLOT SCALE * 50.0000 / in.	CHECKED - IY	REVISED -	REVISED -			SCALE: N/A	SHEET 2 OF 2 SHEETS	STA. N/A	TO STA. N/A	ILLINOIS FED. AID PROJECT		
PLOT DATE * 12/19/2012	DATE - 12/21/2012	REVISED -	REVISED -			CONTRACT NO. 60V81						

LIGHT POLE FOUNDATION DEPTH TABLE
40 FT. (12.192 m) TO 47.5 FT. (14.478 m) MOUNTING HEIGHT

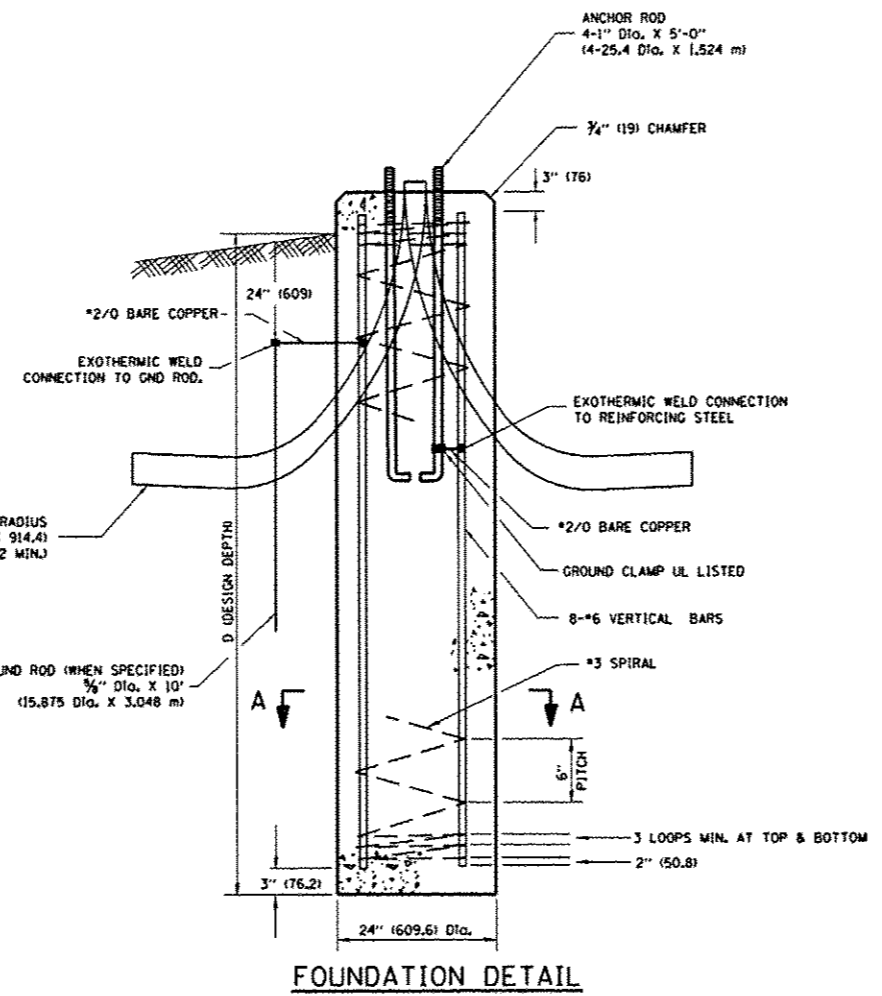
SOIL CONDITIONS	DESIGN DEPTH "D" OF FOUNDATION	
	SINGLE ARM POLE	TWIN ARM POLE
SOFT CLAY O _u = 0.375 TON/SO. FT.	13'-0" (3.96 m)	15'-0" (4.57 m)
MEDIUM CLAY O _u = 0.75 TON/SO. FT.	9'-6" (2.93 m)	10'-9" (3.23 m)
STIFF CLAY O _u = 1.50 TON/SO. FT.	7'-0" (2.13 m)	8'-0" (2.44 m)
LOOSE SAND φ = 34°	9'-0" (2.74 m)	10'-0" (3.05 m)
MEDIUM SAND φ = 37.5°	8'-3" (2.52 m)	9'-0" (2.74 m)
DENSE SAND φ = 40°	7'-9" (2.36 m)	9'-0" (2.74 m)



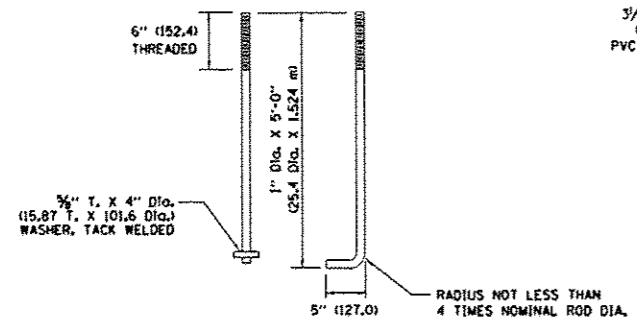
TOP VIEW



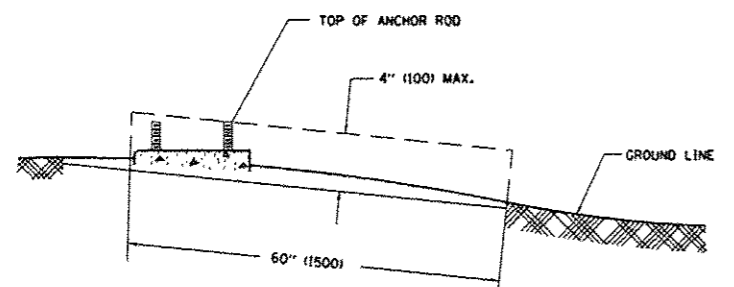
TOP VIEW



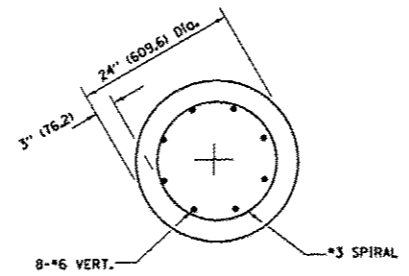
FOUNDATION DETAIL



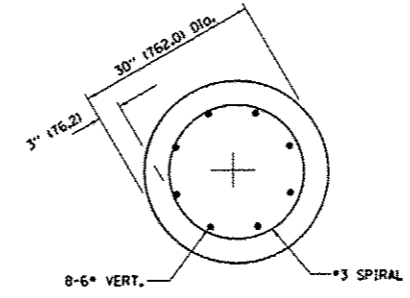
ANCHOR ROD DETAIL



FOUNDATION EXTENSION DETAIL



SECTION A-A



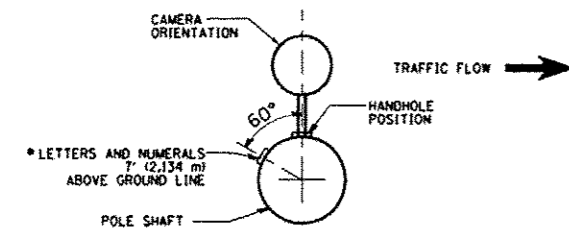
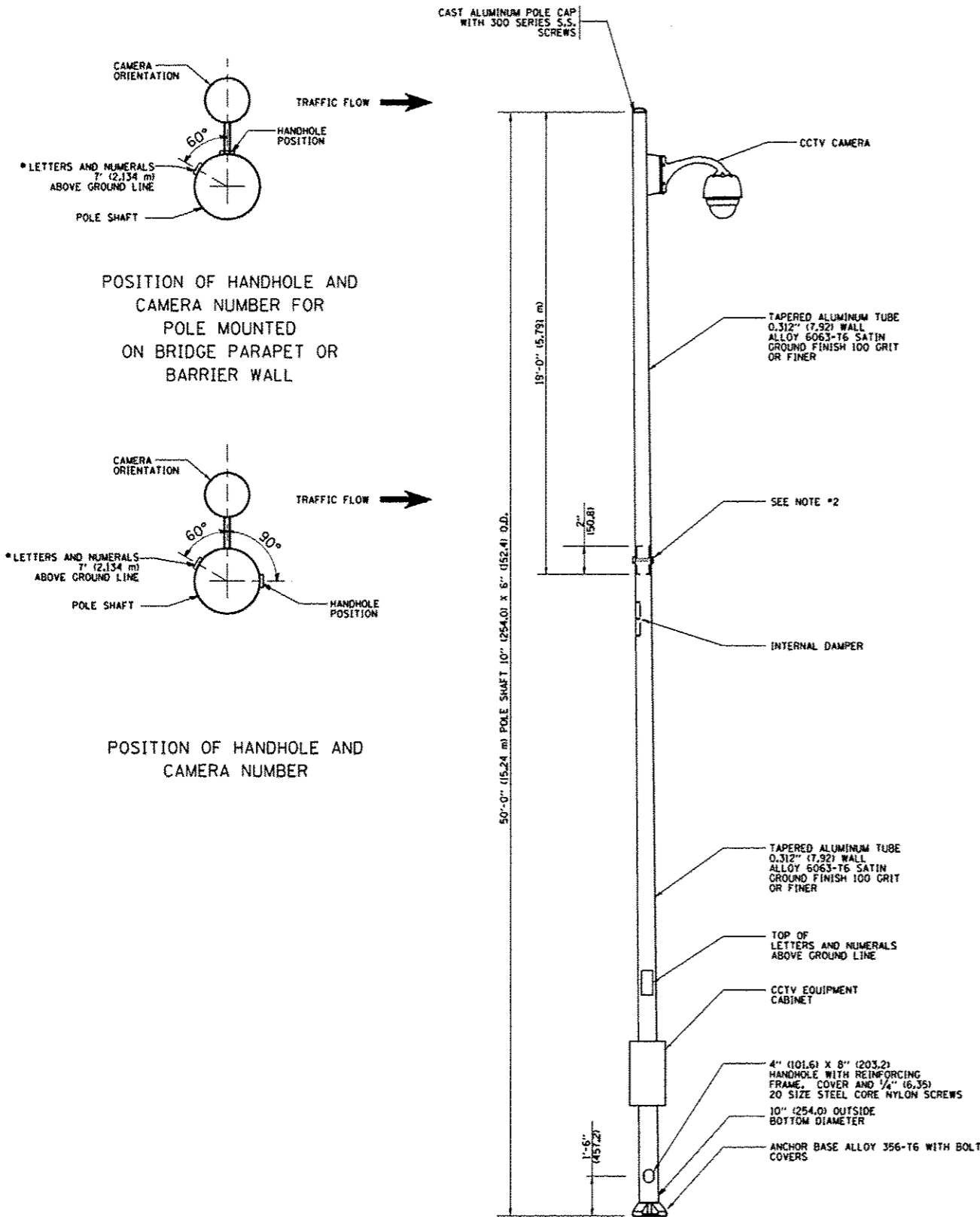
SECTION A-A

NOTES

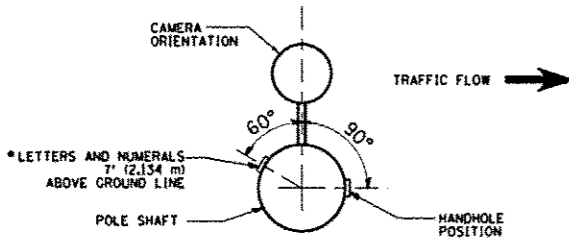
- ALL DIMENSIONS ARE IN INCHES (MILLIMETERS) UNLESS OTHERWISE SHOWN.
- THE ANCHOR RODS AND RACEWAYS SHALL BE PROPERLY SECURED IN PLACE BEFORE THE CONCRETE IS PLACED.
- THE FOUNDATION SHALL NOT PROTRUDE MORE THAN 100MM (4 IN.) ABOVE THE FINISHED GRADE WITHIN A 60 IN. (1.5 m) CHORD ACROSS THE FOUNDATION, WITH ANCHOR RODS INCLUDED, IN ACCORDANCE WITH AASHTO GUIDELINES. IF THE FOUNDATION HEIGHT, INCLUDING ANCHOR RODS, EXTENDS BEYOND THESE SPECIFIED LIMITS, THE FOUNDATION SHALL BE REPLACED AT THE CONTRACTOR'S EXPENSE. SEE FOUNDATION EXTENSION DETAIL.
- THE HOLE FOR THE FOUNDATION SHALL BE MADE BY DRILLING WITH AN AUGER, OF THE SAME DIAMETER AS THE FOUNDATION. IF SOIL CONDITIONS REQUIRE THE USE OF A LINER TO FORM THE HOLE, THE LINER SHALL BE WITHDRAWN AS THE CONCRETE IS DEPOSITED.
- THE TOP OF THE FOUNDATION SHALL BE CONSTRUCTED LEVEL. A LINER OR FORM SHALL BE USED TO PRODUCE A UNIFORM SMOOTH SIDE TO THE TOP OF THE FOUNDATION. FOUNDATION TOP SHALL BE CHAMFERED 3/4-IN. (20 mm).
- THE CONCRETE SHALL BE CLASS SI. CONCRETE SHALL CURE ACCORDING TO ARTICLE 1020.13 BEFORE LIGHT POLES ARE INSTALLED.
- THE ANCHOR ROD SHALL BE A HOOK ROD TYPE. COLD BENDING OF THE ANCHOR ROD WILL NOT BE ALLOWED. THE RADIUS OF THE HOOK BEND SHALL NOT BE LESS THAN 4 TIMES THE NOMINAL DIAMETER OF THE ANCHOR ROD. A TACK WELDED ANCHOR ROD MAY BE SUBSTITUTED WITH THE APPROVAL OF THE ENGINEER.
- THE ANCHOR RODS SHALL BE ACCORDING TO ASTM F1554 GRADE 75 (GRADE 105). NUTS SHALL BE HEXAGON NUTS ACCORDING TO ASTM A 194 2H OR ASTM A 563 DL AND WASHERS SHALL BE ACCORDING TO ASTM F 436.
- ANCHOR RODS, NUTS AND WASHERS SHALL BE COMPLETELY GALVANIZED BY EITHER THE HOT-DIPPED PROCESS CONFORMING WITH AASHTO M 232, THE MECHANICAL PLATING METHOD CONFORMING TO AASHTO M 298, CLASS 50 WITH A MAXIMUM COATING THICKNESS OF 150 UM6 MILS) OR THE ELECTROLYTIC PROCESS ACCORDING TO ASTM F 1136.
- THE ANCHOR RODS SHALL BE THREADED A MINIMUM OF 6 INCHES (150 mm) WITH A MINIMUM OF 3 INCHES (75 mm) OF THREADED ANCHOR ROD EMBEDDED IN THE FOUNDATION.
- ANCHOR RODS SHALL PROJECT 2 3/4" (69.9 mm) ABOVE THE TOP OF THE FOUNDATION. IF BREAKAWAY COUPLINGS ARE SPECIFIED, THE CONTRACTOR SHALL CAREFULLY COORDINATE THE ANCHOR ROD PROJECTION WITH THE INSTALLATION REQUIREMENTS OF THE BREAKAWAY COUPLINGS.
- THE CONTRACTOR SHALL USE A #3 SPIRAL AT 6" (152.4 mm) PITCH OR MAY SUBSTITUTE #3 TIES AT 12" (304.8 mm) O.C. WITH THE APPROVAL OF THE ENGINEER.
- THE CABLE TRENCHES AND FOUNDATION SHALL BE BACK FILLED AND COMPACTED AS SPECIFIED BEFORE THE LIGHT POLE IS ERECTED.
- THE RACEWAYS SHALL PROJECT 1" (25.4 mm) ABOVE THE TOP OF THE FOUNDATION.

Added Sheet 2-20-13

FILE NAME: c:\p\work\p\prod\comsonera\d8180315\be21.dgn	USER NAME: comsonera	DESIGNED: -	REVISED: 04-22-02	STATE OF ILLINOIS DEPARTMENT OF TRANSPORTATION	LIGHT POLE FOUNDATION			F.A. RTE.	SECTION	COUNTY	TOTAL SHEETS	SHEET NO.
PLOT SCALE: 99.9998 1/16"	CHECKED: -	REVISIONS:	REVISIONS:		40' (12.192 m) TO 47' 1/2' (14.478 m) M.H. 15" (381 mm) BOLT CIRCLE				BE-301	CONTRACT NO. 604V87		374
PLOT DATE: 2/28/2013	DATE: -				SCALE: NONE	SHEET NO. 1 OF 1 SHEETS	STA. TO STA.	FED. ROAD DIST. NO. 1 ILLINOIS FED. AID PROJECT				

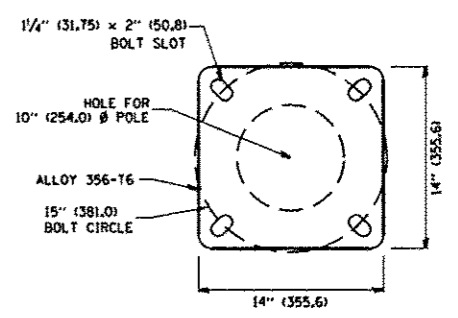


POSITION OF HANDHOLE AND CAMERA NUMBER FOR POLE MOUNTED ON BRIDGE PARAPET OR BARRIER WALL

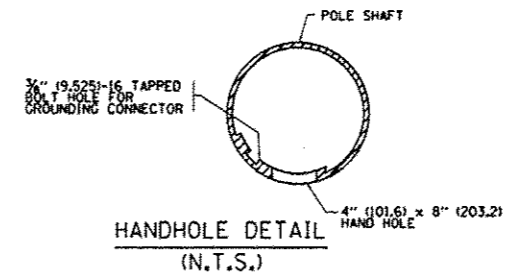


POSITION OF HANDHOLE AND CAMERA NUMBER

- NOTES:**
1. ALL DIMENSIONS ARE IN INCHES (MILLIMETERS) UNLESS OTHERWISE SHOWN.
 2. TWO PIECE SHAFT WILL BE MATCHED MARKED AND INTERCHANGEABLE BETWEEN DIFFERENT UNITS. FIELD DRILLING OF THE HOLES WILL NOT BE ALLOWED.
 3. THE POLE WILL MEET AASHTO DESIGN CRITERIA AS SPECIFIED.
 4. THE INSTALLING CONTRACTOR WILL PROVIDE A UL LISTED GROUNDING CONNECTOR, BURNDY K2C23, T&B SP4DL OR APPROVED EQUAL.
 5. POLES WILL BE INSTALLED IN ACCORDANCE TO MANUFACTURER'S INSTRUCTIONS.
 6. POLES WILL BE SET PLUMB ON THE FOUNDATION WITHOUT THE USE OF LEVELING NUTS, WASHERS OR SHIMS.



POLE BASE PLATE DETAIL
15 INCH (381.0) BOLT CIRCLE



Added Sheet 2-20-B

FILE NAME =	USER NAME = tomsonr	DESIGNED -	REVISED - R. TOMSONS 09-06-00	STATE OF ILLINOIS DEPARTMENT OF TRANSPORTATION	CCTV CAMERA STRUCTURE		F.A. R.T.E.	SECTION	COUNTY	TOTAL SHEET NO.	
cr:\pwork\pvidot\tomsonr\08100315\081003.dgn		DRAWN -	REVISED - R. TOMSONS 09-03-03		50' (15.24 m) MOUNTING HEIGHT					378	
		CHECKED -	REVISED -		SCALE: NONE	SHEET NO. 1	OF 1 SHEETS	STA.	TO STA.	BE-1000	CONTRACT NO. 00V81
		DATE -	REVISED -		FED. ROAD DIST. NO. 1 (ILLINOIS) FED. AID PROJECT						