

STATE OF ILLINOIS
DEPARTMENT OF TRANSPORTATION
DIVISION OF HIGHWAYS

**PROPOSED
HIGHWAY PLANS**

FAP ROUTE 846A: IL RTE 53 (CHICAGO ST)
AT LARAWAY RD
SECTION 2-TS (12)
PROJECT: HSIP-0846(025)
TRAFFIC SIGNAL MODERNIZATION
WILL COUNTY

C-91-117-13

F.A.P. RTE.	SECTION	COUNTY	TOTAL SHEETS	SHEET NO.
846 A	2-TS (12)	WILL	15	1
		ILLINOIS	CONTRACT NO. 60V95	

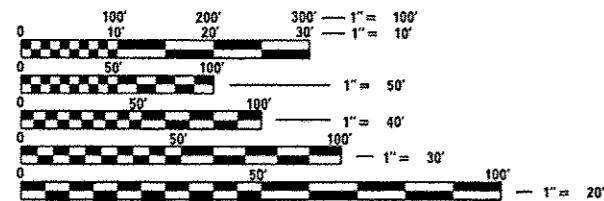
*1542-17

FOR INDEX OF SHEETS, SEE SHEET NO. 2

DESIGN DESIGNATIONS:

IL RTE 38 - OTHER PRINCIPAL ARTERIAL
2011 ADT: 15,400
POSTED SPEED LIMIT: 50 MPH

THE PROJECT IS LOCATED IN
THE CITY OF JOLIET AND
UNINCORPORATED WILL COUNTY.

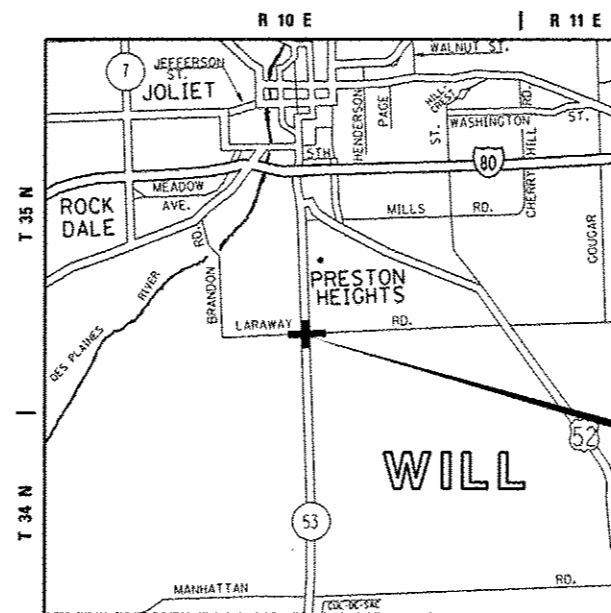


FULL SIZE PLANS HAVE BEEN PREPARED USING STANDARD ENGINEERING SCALES. REDUCED SIZED PLANS WILL NOT CONFORM TO STANDARD SCALES. IN MAKING MEASUREMENTS ON REDUCED PLANS, THE ABOVE SCALES MAY BE USED.

J.U.L.I.E.
JOINT UTILITY LOCATION INFORMATION FOR EXCAVATION
1-800-892-0123
OR 811

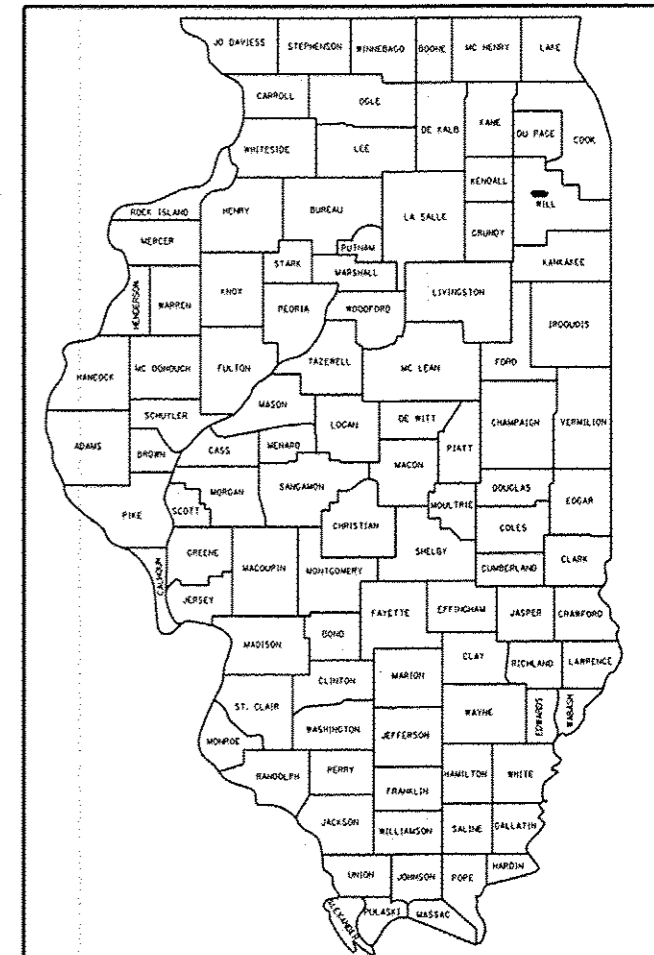
PROJECT ENGINEER: PETER BLUMBERG / LUKASZ POCIECHA
PROJECT MANAGER: SUDUD MAHMOUD (847) 708-4420

CONTRACT NO. 60V95



IL RTE 53 AT
LARAWAY RD

D-91-117-13



LOCATION OF SECTION INDICATED THIS: - [black rectangle] -

STATE OF ILLINOIS
DEPARTMENT OF TRANSPORTATION
DIVISION OF HIGHWAYS

SUBMITTED Dec 14 2012
John Fickman
DEPUTY DIRECTOR OF HIGHWAYS, REGION ENGINEER

Feb 1 2013
John D. Baranzelli P.E./bc
ACTING ENGINEER OF DESIGN AND ENVIRONMENT

Feb 1 2013
Onur Osman P.E./bc
DIRECTOR OF HIGHWAYS, CHIEF ENGINEER

PRINTED BY THE AUTHORITY
OF THE STATE OF ILLINOIS