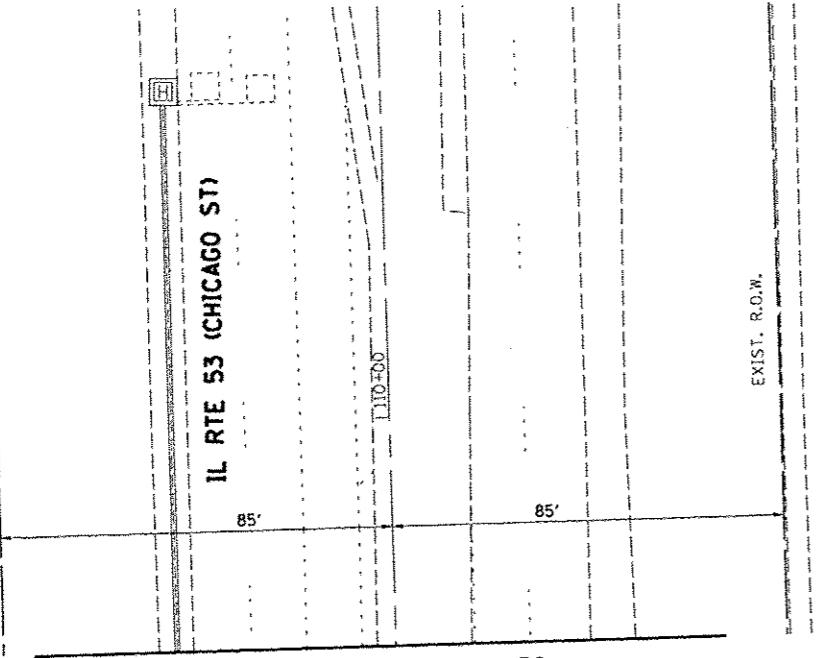
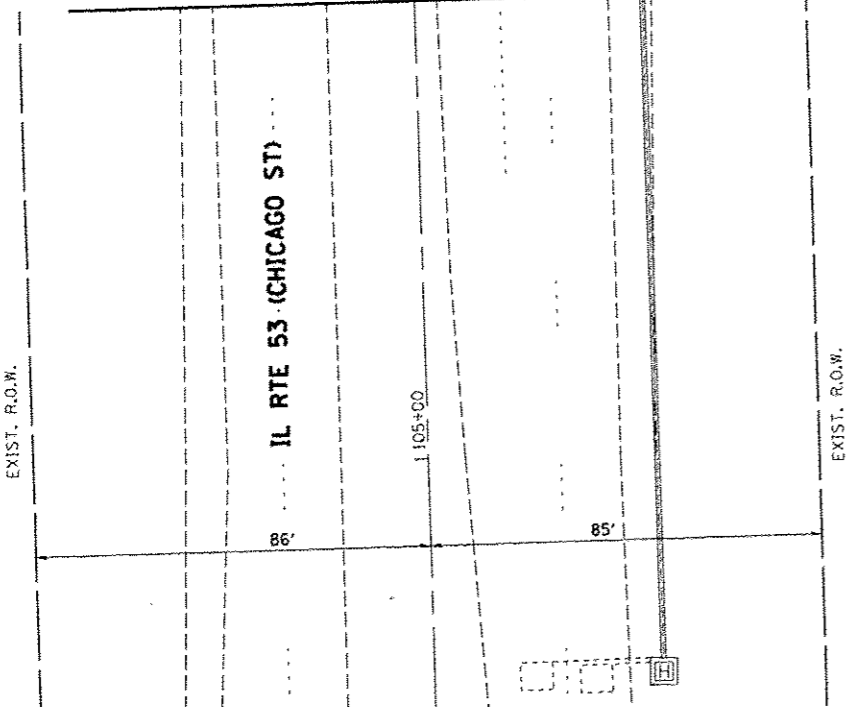


EXIST. R.O.W.



MATCH LINE STA. 109+50

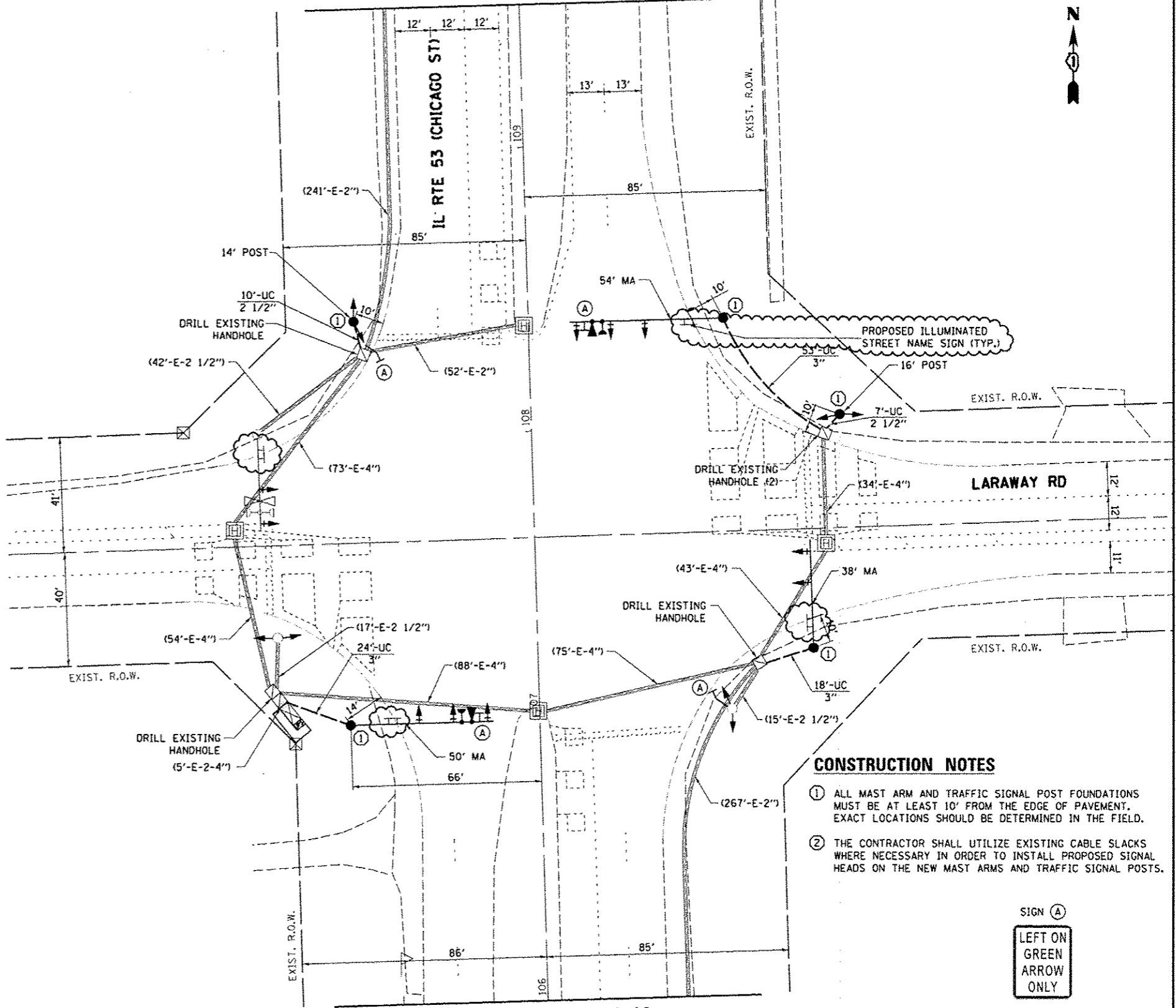
MATCH LINE STA. 106+00



EXIST. R.O.W.

EXIST. R.O.W.

MATCH LINE STA. 109+50



LARAWAY RD

CONSTRUCTION NOTES

- ① ALL MAST ARM AND TRAFFIC SIGNAL POST FOUNDATIONS MUST BE AT LEAST 10' FROM THE EDGE OF PAVEMENT. EXACT LOCATIONS SHOULD BE DETERMINED IN THE FIELD.
- ② THE CONTRACTOR SHALL UTILIZE EXISTING CABLE SLACKS WHERE NECESSARY IN ORDER TO INSTALL PROPOSED SIGNAL HEADS ON THE NEW MAST ARMS AND TRAFFIC SIGNAL POSTS.

SIGN (A)
 LEFT ON
 GREEN
 ARROW
 ONLY

R10-5
 30"x36"
 (4 EACH)

TS#7570

FILE NAME	USER NAME	DESIGNED	REVISED
c:\pwwork\p1dot\pocirecha\10832734\01	pocirecha	PB / LP	IRV 02/01/2013
		DRAWN	REVISED
		PB / LP	
		CHECKED	REVISED
		SM	
		DATE	REVISED
		11/30/12	

STATE OF ILLINOIS
 DEPARTMENT OF TRANSPORTATION

TRAFFIC SIGNAL MODERNIZATION PLAN
 IL RTE 53 (CHICAGO ST) AT LARAWAY RD

F.A.P. RTE.	SECTION	COUNTY	TOTAL SHEETS	SHEET NO.
846 A	2-TS (12)	WILL	15	13
				CONTRACT NO. 60V95
ILLINOIS FED. AID PROJECT				

MODEL NAME

PLOT DATE 2/5/2013

DATE 11/30/12

REVISED

REVISED

SCALE: SHEET OF SHEETS STA. TO STA.

SCALE: SHEET OF SHEETS STA. TO STA.