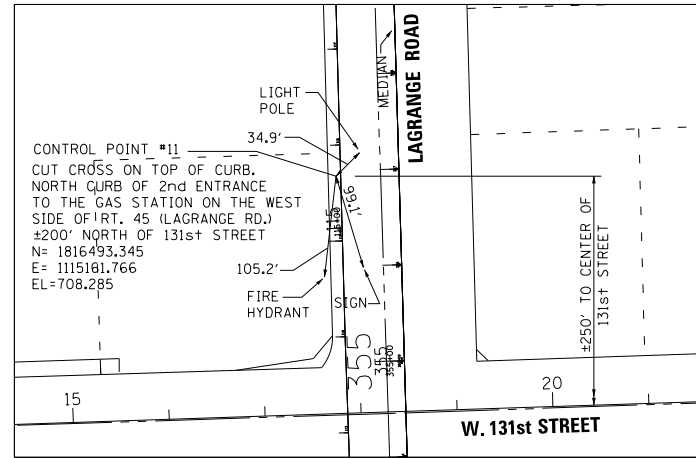


LOCATION: STA 353+94.32 60.62' EAST OF US 45

CONTROL POINT NO. 10

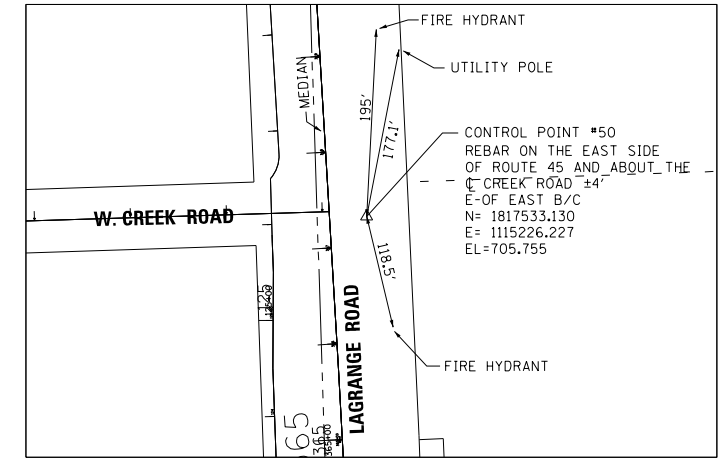
SCALE: 1" = 100'



LOCATION: STA 356+94.15 65.61' WEST OF US 45

CONTROL POINT NO. 11

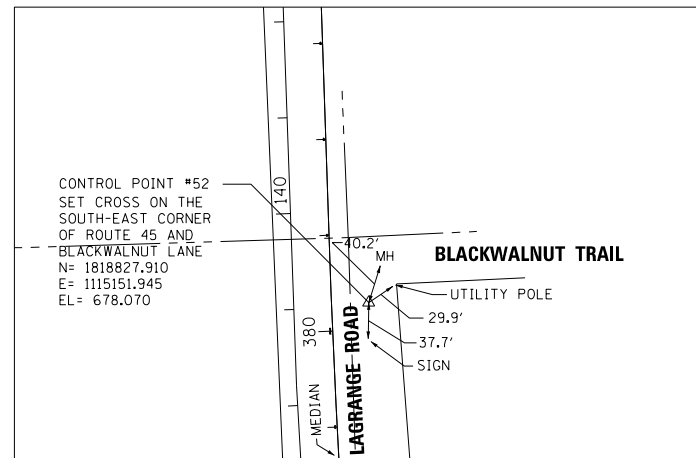
SCALE: 1" = 100'



LOCATION: STA 367+69.38 38.79' EAST OF US 45

CONTROL POINT NO. 50

SCALE: 1" = 100'



CONTROL POINT #52
SET CROSS ON THE
SOUTH-EAST CORNER
OF ROUTE 45 AND
BLACKWALNUT LANE
N= 1818827.910
E= 1115151.945
EL= 678.070

CONTROL POINT NO. 52

SCALE: 1" = 100'