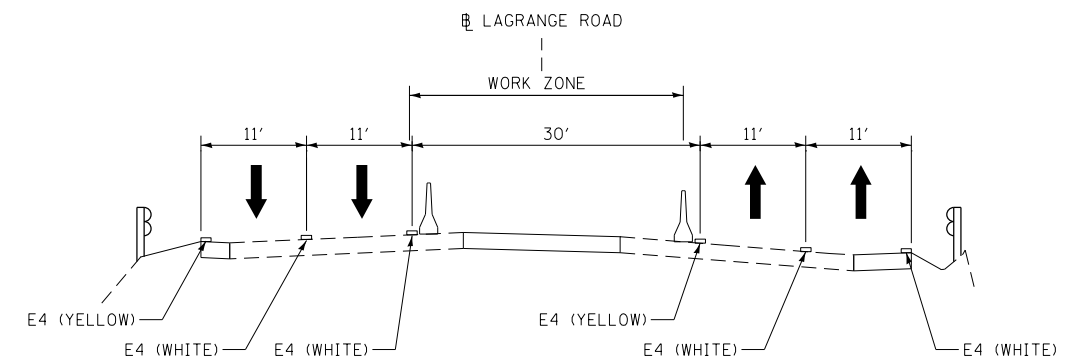
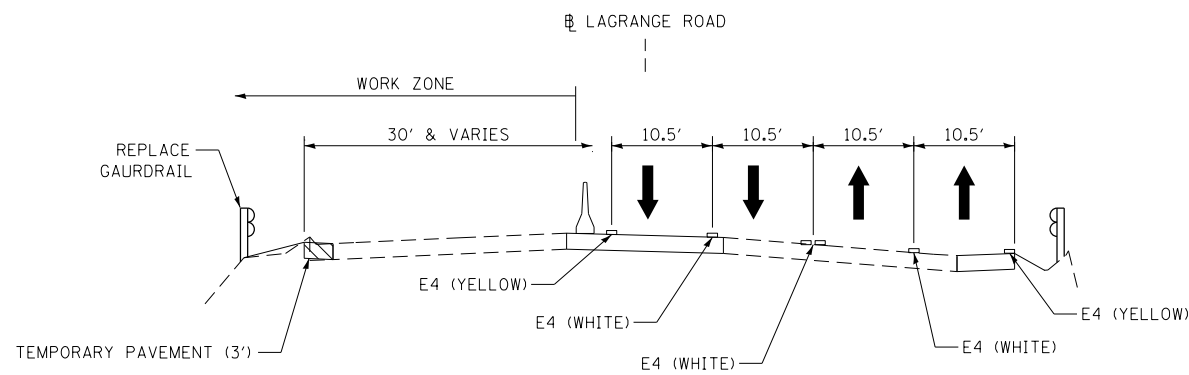


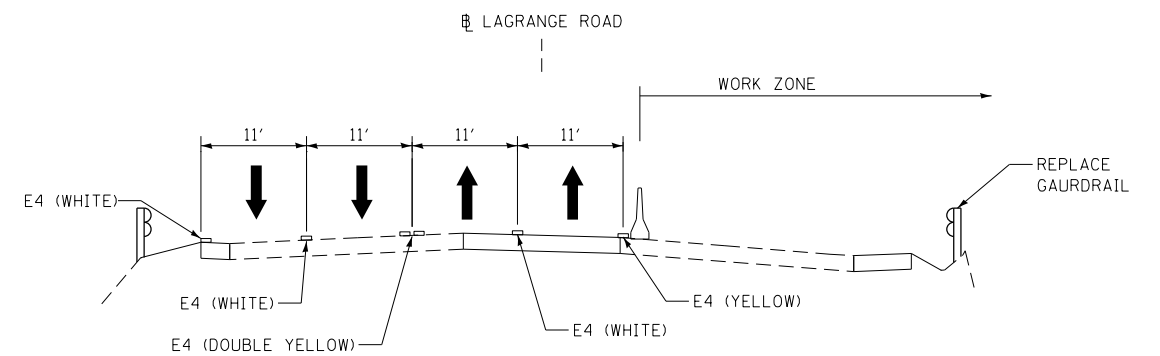
**LAGRANGE ROAD TYPICAL SECTION – PRE-STAGE**  
**(MEDIAN TEMPORARY PAVEMENT)**  
 STA. 170+90 TO STA. 380+63.19



**LAGRANGE ROAD TYPICAL SECTION – STAGE 2**  
**(MIDDLE SECTION OF CULVERT)**  
 STA. 170+90 TO STA. 380+63.19



**LAGRANGE ROAD TYPICAL SECTION – STAGE 1**  
**(WEST SECTION OF CULVERT & TEMPORARY PAVEMENT)**  
 STA. 170+90 TO STA. 380+63.19



**LAGRANGE ROAD TYPICAL SECTION – STAGE 3**  
**(EAST SECTION OF CULVERT)**  
 STA. 198+15 TO STA. 199+63

100 S. WACKER DR.  
 SUITE 500  
 CHICAGO, IL 60606  
 TEL (312) 939-1000  
 FAX (312) 939-4198  
**URS**

FILE NAME = D160W07-SHT-MOT01.dgn	USER NAME = Anthony.Plutz	DESIGNED - YSK	REVISED -
		DRAWN - YSK	REVISED -
		CHECKED - ---	REVISED -
SHT.PLAN	PLOT DATE = 1/7/2013	DATE - 01/02/13	REVISED -

**STATE OF ILLINOIS  
 DEPARTMENT OF TRANSPORTATION**

**SUGGESTED STAGES OF CONSTRUCTION AND TRAFFIC CONTROL  
 TYPICAL SECTIONS**

SCALE: SHEET 1 OF 5 SHEETS STA. TO STA.

F.A.P. RTE.	SECTION	COUNTY	TOTAL SHEETS	SHEET NO.
330	2012-0881	COOK	152	21
<b>MT-01</b>			CONTRACT NO. 60W09	
ILLINOIS FED. AID PROJECT				