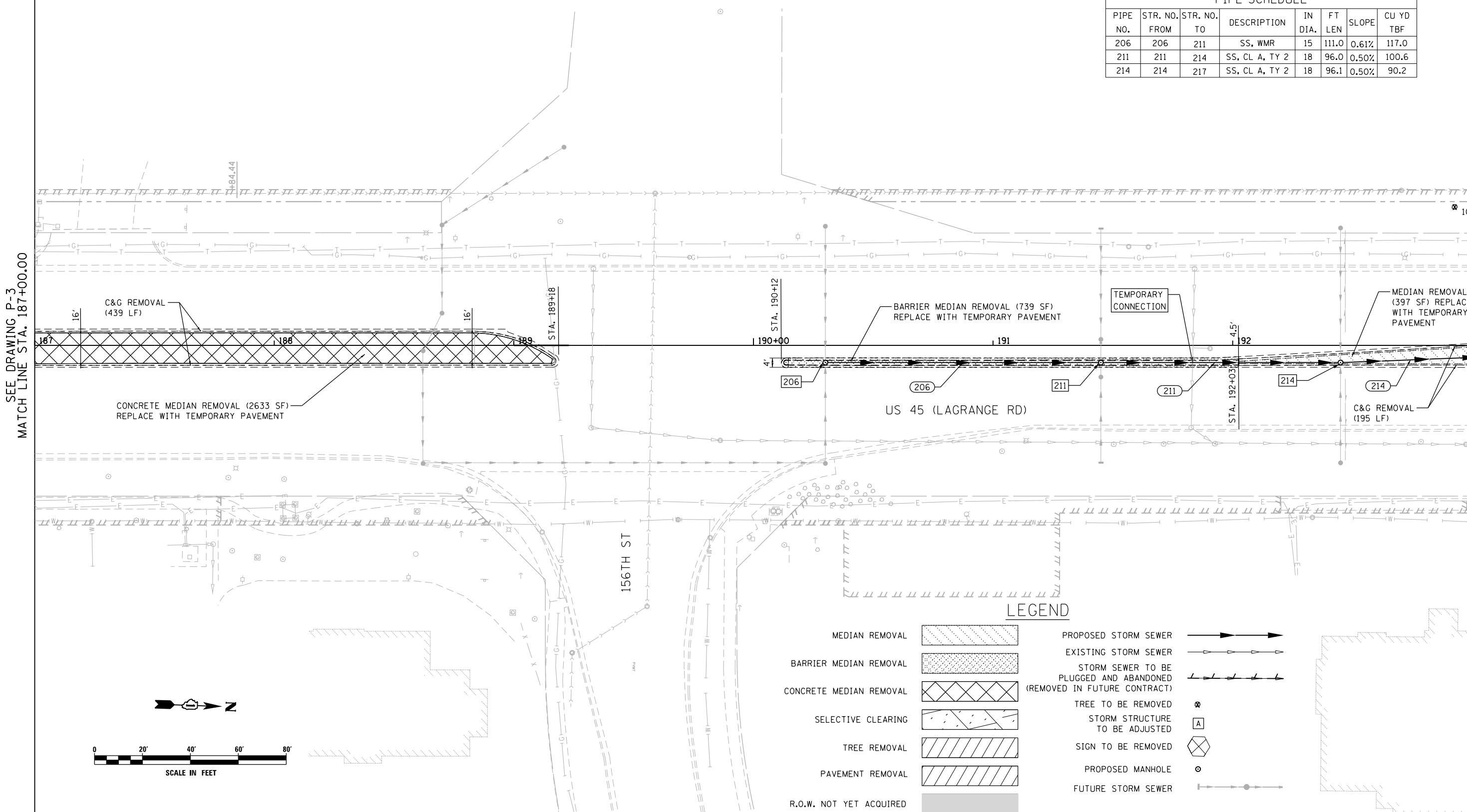


| STRUCTURE SCHEDULE | | | | | | | | | | | | |
|--------------------|-----------|---------|-----------|-------|--------|-----------------|-----------------|-----------------|---------------|---------------|---------------|---------------|
| STR. NO. | STA. | OFFSET | STRUCTURE | OTHER | COVER | TEMP. RIM ELEV. | TEMP. RIM ELEV. | FINAL RIM ELEV. | N | E | S | W |
| | | | | | | CONTRACT 60W09 | CONTRACT 60M61 | CONTRACT 60M61 | | | | |
| 206 | 190+30.00 | 7.2' RT | MH TA 4 | | TIF CL | 694.21 | 694.80 | 696.61 | 686.09(N) 15" | 686.19(E) 15" | | 688.94(W) 12" |
| 211 | 191+45.00 | 7.2' RT | MH TA 4 | | TIF CL | 693.16 | 693.55 | 695.36 | 685.16(N) 18" | 687.77(E) 12" | 685.41(S) 15" | 687.57(W) 12" |
| 214 | 192+45.00 | 7.2 RT | MH TA 4 | | TIF CL | 692.20 | 692.47 | 694.23 | 684.58(N) 18" | 686.53(E) 12" | 684.68(S) 18" | 686.53(W) 12" |

| PIPE SCHEDULE | | | | | | | |
|---------------|---------------|-------------|----------------|---------|--------|-------|-----------|
| PIPE NO. | STR. NO. FROM | STR. NO. TO | DESCRIPTION | IN DIA. | FT LEN | SLOPE | CU YD TBF |
| 206 | 206 | 211 | SS, WMR | 15 | 111.0 | 0.61% | 117.0 |
| 211 | 211 | 214 | SS, CL A, TY 2 | 18 | 96.0 | 0.50% | 100.6 |
| 214 | 214 | 217 | SS, CL A, TY 2 | 18 | 96.1 | 0.50% | 90.2 |



SEE DRAWING P-3
MATCH LINE STA. 187+00.00

MATCH LINE STA. 193+00.00
SEE DRAWING P-5

LEGEND

| | | | |
|-------------------------|--|--|--|
| MEDIAN REMOVAL | | PROPOSED STORM SEWER | |
| BARRIER MEDIAN REMOVAL | | EXISTING STORM SEWER | |
| CONCRETE MEDIAN REMOVAL | | STORM SEWER TO BE PLUGGED AND ABANDONED (REMOVED IN FUTURE CONTRACT) | |
| SELECTIVE CLEARING | | TREE TO BE REMOVED | |
| TREE REMOVAL | | STORM STRUCTURE TO BE ADJUSTED | |
| PAVEMENT REMOVAL | | SIGN TO BE REMOVED | |
| R.O.W. NOT YET ACQUIRED | | PROPOSED MANHOLE | |
| | | FUTURE STORM SEWER | |

URS
100 S. WACKER DR.
SUITE 600
CHICAGO, IL 60606
TEL (312) 935-1000
FAX (312) 935-4998

| | | | |
|---|---------------------------|-----------------|-----------|
| FILE NAME = D:\160W09-SHT-DRAINPR04.dgn | USER NAME = Anthony.Plutz | DESIGNED - EJD | REVISED - |
| | | DRAWN - EJD | REVISED - |
| | | CHECKED - JWM | REVISED - |
| | | DATE - 01/02/13 | REVISED - |

**STATE OF ILLINOIS
DEPARTMENT OF TRANSPORTATION**

REMOVAL, TEMPORARY PAVEMENT, AND DRAINAGE PLAN
SCALE: 1"=20' SHEET 4 OF 37 SHEETS STA. 187+00.00 TO STA. 193+00.00

| | | | | |
|---------------------------|-------------------|--------------------|------------------|--------------|
| F.A.P. RTE. 330 | SECTION 2012-0881 | COUNTY COOK | TOTAL SHEETS 152 | SHEET NO. 29 |
| P-4 | | CONTRACT NO. 60W09 | | |
| ILLINOIS FED. AID PROJECT | | | | |