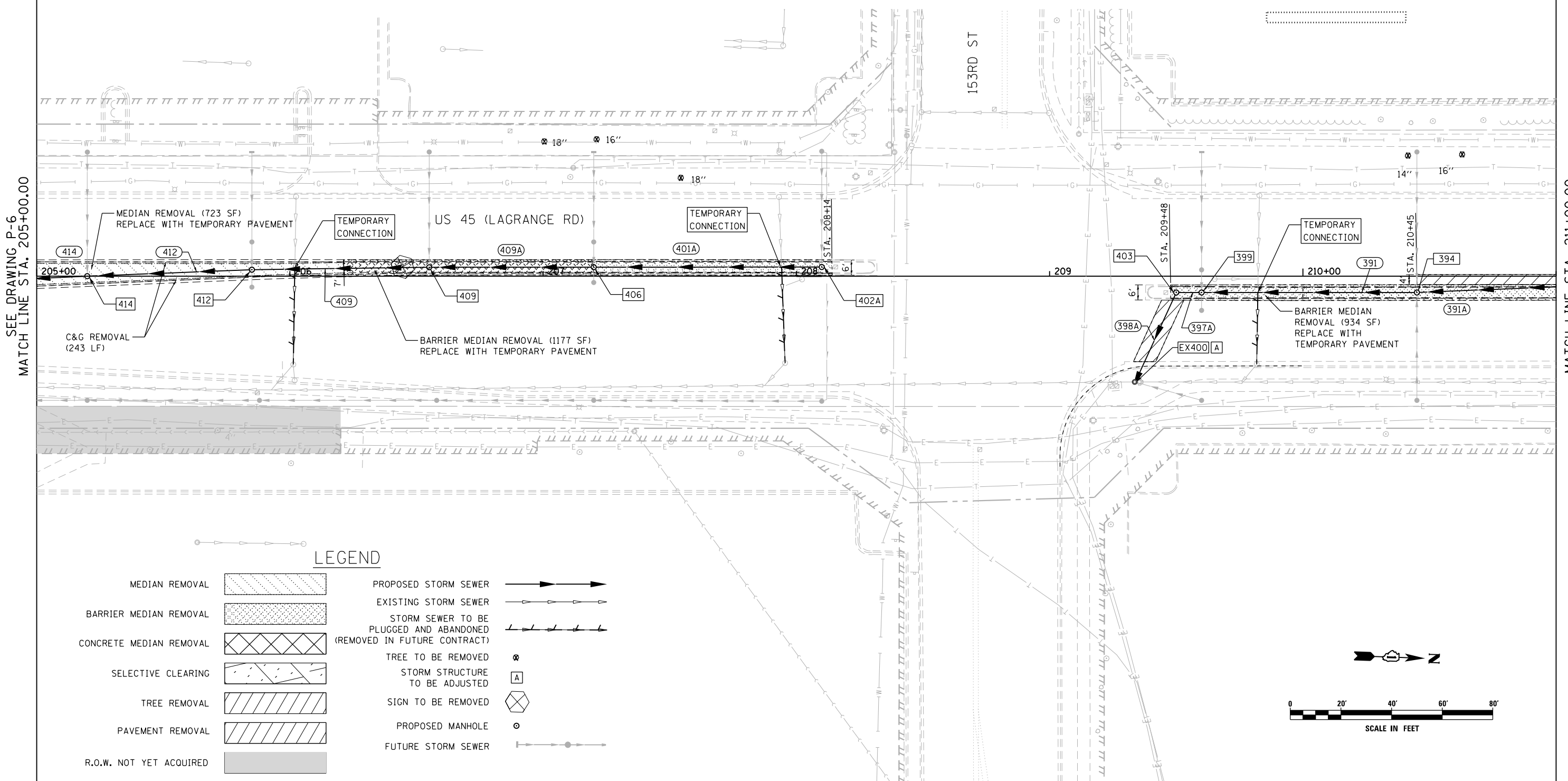


PIPE SCHEDULE							
PIPE NO.	STR. NO. FROM	STR. NO. TO	DESCRIPTION	IN DIA.	FT LEN	SLOPE	CU YD TBF
391A	391	394	SS, CL A, TY 2	12	81.1	1.04%	17.4
397A	399	403	SS, CL A, TY 1	18	6.0	1.33%	0.9
398A	403	EX400	SS, CL A, TY 2	18	33.9	1.12%	11.3
391	394	399	SS, CL A, TY 1	15	81.0	1.04%	13.5
401A	402A	406	SS, CL A, TY 2	12	86.0	1.00%	29.3
409	409	412	SS, CL A, TY 2	12	66.0	0.53%	41.7
409A	406	409	SS, CL A, TY 2	12	61.0	0.54%	23.4
412	412	414	SS, CL A, TY 2	15	61.1	0.52%	41.3
414	414	420	SS, CL A, TY 2	15	61.1	0.52%	45.5

STRUCTURE SCHEDULE												
STR. NO.	STA.	OFFSET	STRUCTURE	OTHER	COVER	TEMP. RIM ELEV. CONTRACT 60W09	TEMP. RIM ELEV CONTRACT 60M61	FINAL RIM ELEV. CONTRACT 60M61	N	E	S	W
394	210+45.00	6.4' RT	MH TA 4		T1F CL	695.07	697.20	698.99	691.62(N) 12"	691.44(E) 12"	691.37(S) 15"	691.33(W) 12"
399	209+60.00	6.4' RT	MH TA 4		T1F CL	693.80	695.91	697.70	690.53(N) 15"	691.21(E) 12"	690.28(S) 18"	691.21(W) 12"
EX400	209+33.60	41.7' RT	ADJ MH					694.81	684.73(N) 48"	690.29(NE) 12"	684.68(S) 48"	689.31(NW) 18"
402A	208+10.00	3.6' LT	MH TA 4		T1F CL	692.31	693.84	693.56			687.62(S) 12"	687.76(W) 12"
403	209+50.00	6.4' RT	MH TA 4		T1F CL	693.67	695.76	697.38	690.20(N) 18"		689.69(SE) 18"	
406	207+20.00	3.5' LT	MH TA 4		T1F CL	691.96	692.92	694.38	686.76(N) 12"	686.66(E) 12"	686.66(S) 12"	686.67(W) 12"
409	206+55.00	3.5' LT	MH TA 4		T1F CL	691.73	692.53	694.00	686.33(N) 12"		686.23(S) 12"	686.56(W) 12"
412	205+85.00	2.6' LT	MH TA 4		T1F CL	691.48	692.27	693.75	685.88(N) 12"	686.71(E) 12"	685.63(S) 15"	685.95(W) 12"
414	205+20.00	' LT	MH TA 4		T1F CL	691.32	691.99	693.53	685.31(N) 15"		685.21(S) 15"	686.10(W) 12"



**LEGEND**

- MEDIAN REMOVAL
- BARRIER MEDIAN REMOVAL
- CONCRETE MEDIAN REMOVAL
- SELECTIVE CLEARING
- TREE REMOVAL
- PAVEMENT REMOVAL
- R.O.W. NOT YET ACQUIRED
- PROPOSED STORM SEWER
- EXISTING STORM SEWER
- STORM SEWER TO BE PLUGGED AND ABANDONED (REMOVED IN FUTURE CONTRACT)
- TREE TO BE REMOVED
- STORM STRUCTURE TO BE ADJUSTED
- SIGN TO BE REMOVED
- PROPOSED MANHOLE
- FUTURE STORM SEWER

100 S. WACKER DR.  
 SUITE 600  
 CHICAGO, IL 60606  
 TEL (312) 939-1000  
 FAX (312) 939-4998  
**URS**

FILE NAME = D160W09-SHT-DRAINPR07.dgn	USER NAME = Anthony.Plutz	DESIGNED - EJD	REVISED -
		DRAWN - EJD	REVISED -
		CHECKED - JWM	REVISED -
		DATE - 01/02/13	REVISED -

**STATE OF ILLINOIS**  
**DEPARTMENT OF TRANSPORTATION**

**REMOVAL, TEMPORARY PAVEMENT, AND DRAINAGE PLAN**  
 SCALE: 1"=20' SHEET 7 OF 37 SHEETS STA. 205+00.00 TO STA. 211+00.00

F.A.P. RTE. 330	SECTION 2012-0881	COUNTY COOK	TOTAL SHEETS 152	SHEET NO. 32
P-7			CONTRACT NO. 60W09	
ILLINOIS FED. AID PROJECT				