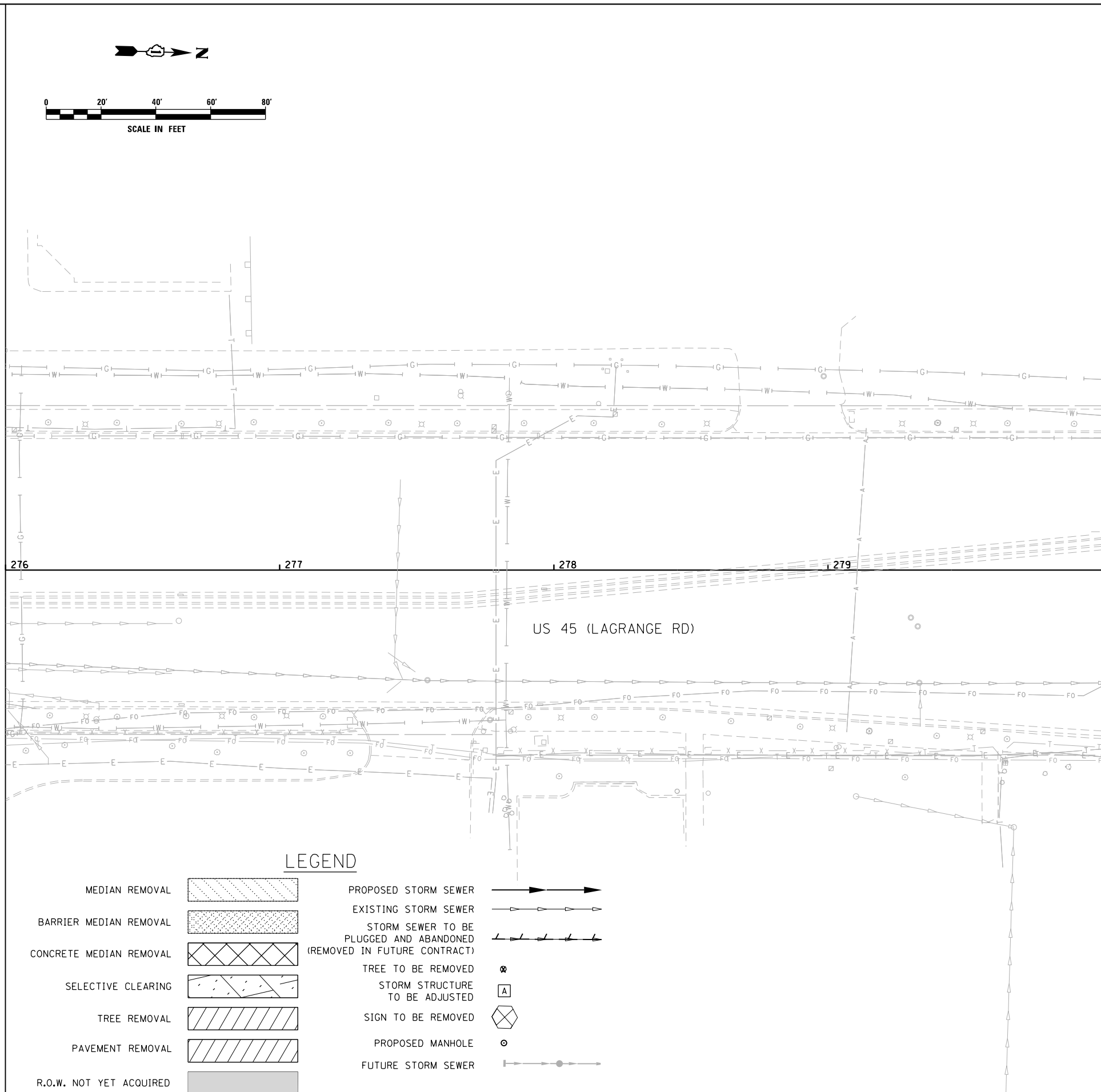


MATCH LINE STA. 276+00.00
SEE DRAWING P-18



MATCH LINE STA. 280+00.00
SEE DRAWING P-20

LEGEND

- | | | | |
|-------------------------|--|--|--|
| MEDIAN REMOVAL | | PROPOSED STORM SEWER | |
| BARRIER MEDIAN REMOVAL | | EXISTING STORM SEWER | |
| CONCRETE MEDIAN REMOVAL | | STORM SEWER TO BE PLUGGED AND ABANDONED (REMOVED IN FUTURE CONTRACT) | |
| SELECTIVE CLEARING | | TREE TO BE REMOVED | |
| TREE REMOVAL | | STORM STRUCTURE TO BE ADJUSTED | |
| PAVEMENT REMOVAL | | SIGN TO BE REMOVED | |
| R.O.W. NOT YET ACQUIRED | | PROPOSED MANHOLE | |
| | | FUTURE STORM SEWER | |

FILE NAME = D:\60W09-SHT-DRAINPR19.dgn
 SHT_PLAN

USER NAME = Anthony.Plutz
 PLOT SCALE = 48.000000' / in.
 PLOT DATE = 1/7/2013

DESIGNED - EJD
 DRAWN - EJD
 CHECKED - JWM
 DATE - 01/02/13

REVISED -
 REVISED -
 REVISED -
 REVISED -

**STATE OF ILLINOIS
 DEPARTMENT OF TRANSPORTATION**

REMOVAL, TEMPORARY PAVEMENT, AND DRAINAGE PLAN

SCALE: 1"=20' SHEET 19 OF 37 SHEETS STA. 276+00.00 TO STA. 280+00.00

F.A.P. RTE.	SECTION	COUNTY	TOTAL SHEETS	SHEET NO.
330	2012-0881	COOK	152	44
P-19			CONTRACT NO. 60W09	
ILLINOIS FED. AID PROJECT				