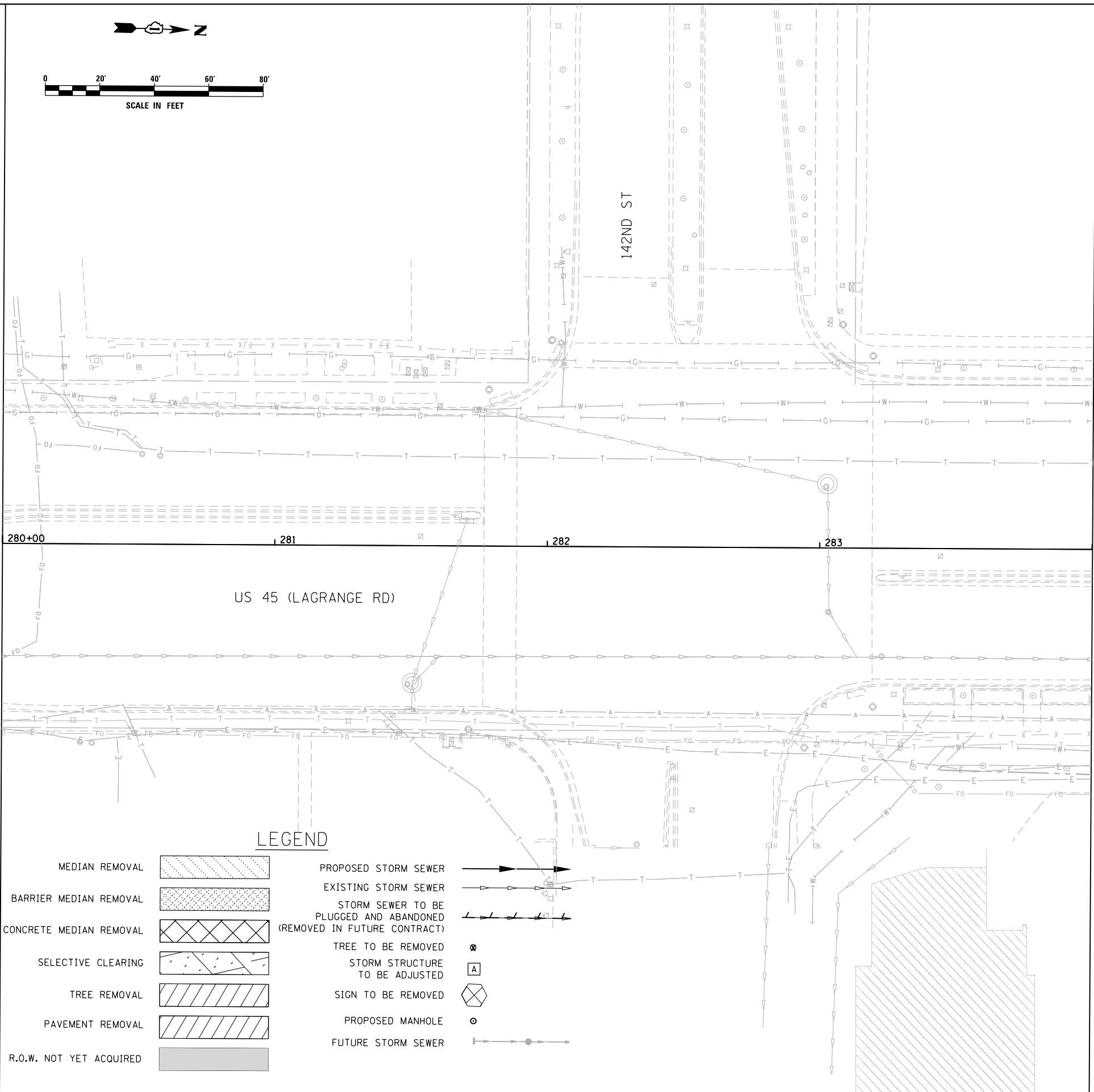


MATCH LINE STA. 280+00.00
SEE DRAWING P-19

MATCH LINE STA. 284+00.00
SEE DRAWING P-21



LEGEND

- | | | | |
|-------------------------|--|--|--|
| MEDIAN REMOVAL | | PROPOSED STORM SEWER | |
| BARRIER MEDIAN REMOVAL | | EXISTING STORM SEWER | |
| CONCRETE MEDIAN REMOVAL | | STORM SEWER TO BE PLUGGED AND ABANDONED (REMOVED IN FUTURE CONTRACT) | |
| SELECTIVE CLEARING | | TREE TO BE REMOVED | |
| TREE REMOVAL | | STORM STRUCTURE TO BE ADJUSTED | |
| PAVEMENT REMOVAL | | SIGN TO BE REMOVED | |
| R.O.W. NOT YET ACQUIRED | | PROPOSED MANHOLE | |
| | | FUTURE STORM SEWER | |

URS
100 S. WACKER DR.
SUITE 600
CHICAGO, IL 60606
TEL (312) 939-1000
FAX (312) 939-4198

FILE NAME = D:\60W09\9-SHT-DRAINPR20.dgn
SHT.PLAN

USER NAME = Anthony.Plutz
PLOT SCALE = 48.000000' / in.
PLOT DATE = 1/7/2013

DESIGNED - EJD
DRAWN - EJD
CHECKED - JWM
DATE - 01/02/13

REVISED -
REVISED -
REVISED -
REVISED -

**STATE OF ILLINOIS
DEPARTMENT OF TRANSPORTATION**

REMOVAL, TEMPORARY PAVEMENT, AND DRAINAGE PLAN

SCALE: 1"=20' SHEET 20 OF 37 SHEETS STA. 280+00.00 TO STA. 284+00.00

F.A.P. RTE.	SECTION	COUNTY	TOTAL SHEETS	SHEET NO.
330	2012-0881	COOK	152	45
P-20			CONTRACT NO. 60W09	
ILLINOIS FED. AID PROJECT				