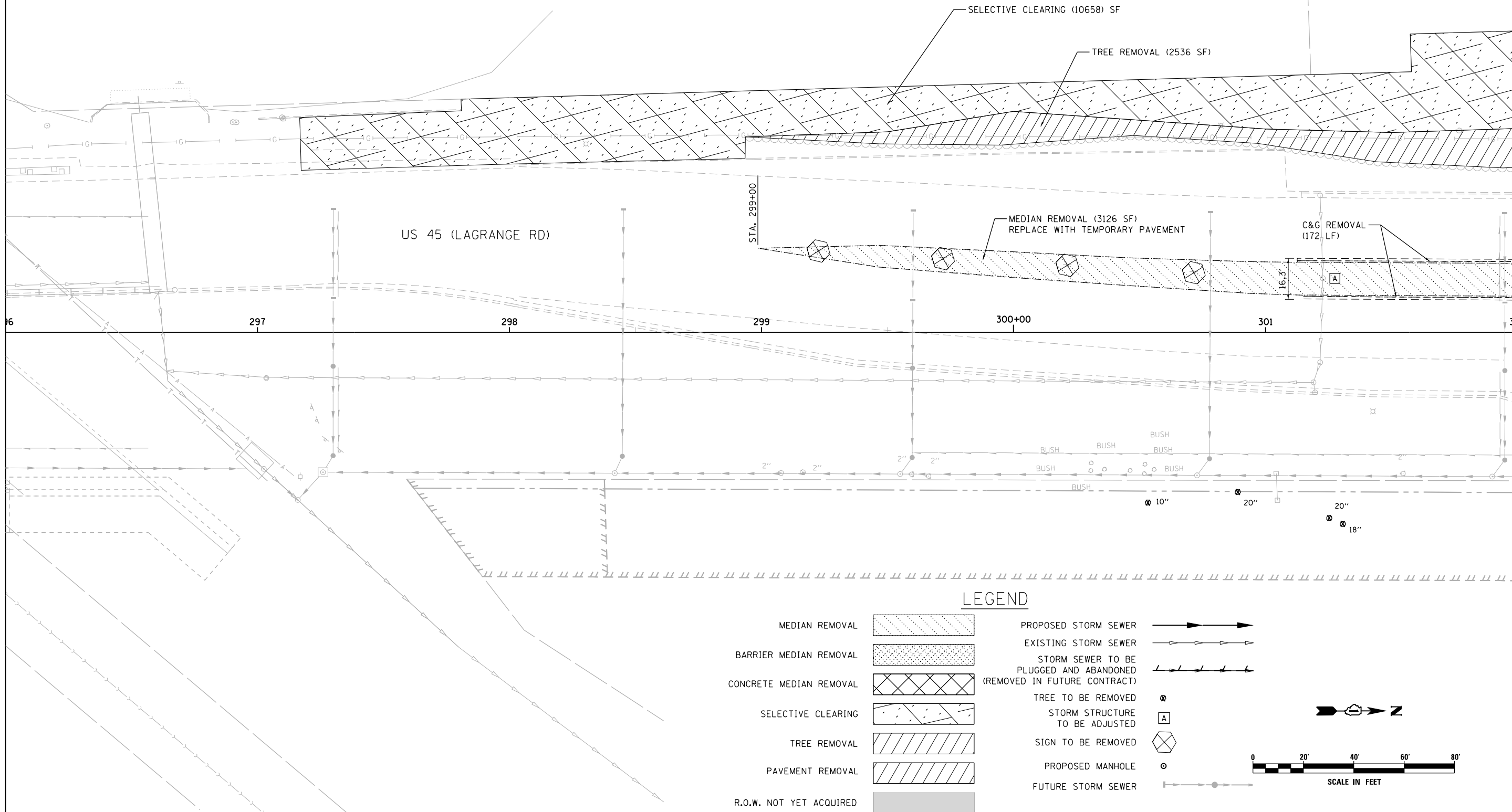


SEE DRAWING P-22
 MATCH LINE STA. 296+00.00



MATCH LINE STA. 302+00.00
 SEE DRAWING P-24

LEGEND

| | | | |
|-------------------------|--|--|--|
| MEDIAN REMOVAL | | PROPOSED STORM SEWER | |
| BARRIER MEDIAN REMOVAL | | EXISTING STORM SEWER | |
| CONCRETE MEDIAN REMOVAL | | STORM SEWER TO BE PLUGGED AND ABANDONED (REMOVED IN FUTURE CONTRACT) | |
| SELECTIVE CLEARING | | TREE TO BE REMOVED | |
| TREE REMOVAL | | STORM STRUCTURE TO BE ADJUSTED | |
| PAVEMENT REMOVAL | | SIGN TO BE REMOVED | |
| R.O.W. NOT YET ACQUIRED | | PROPOSED MANHOLE | |
| | | FUTURE STORM SEWER | |

| | | | |
|---|---------------------------|-----------------|-----------|
| FILE NAME = D:\160W09-SHT-DRAINPR23.dgn | USER NAME = Anthony.Plutz | DESIGNED - EJD | REVISED - |
| | | DRAWN - EJD | REVISED - |
| | | CHECKED - JWM | REVISED - |
| | | DATE - 01/02/13 | REVISED - |

**STATE OF ILLINOIS
 DEPARTMENT OF TRANSPORTATION**

PROPOSED DRAINAGE PLAN - US 45 (LAGRANGE ROAD)

SCALE: 1"=20' SHEET 23 OF 37 SHEETS STA. 296+00.00 TO STA. 302+00.00

| | | | | |
|---------------------------|-------------------|-------------|--------------------|--------------|
| F.A.P. RTE. 330 | SECTION 2012-0881 | COUNTY COOK | TOTAL SHEETS 152 | SHEET NO. 48 |
| P-23 | | | CONTRACT NO. 60W09 | |
| ILLINOIS FED. AID PROJECT | | | | |