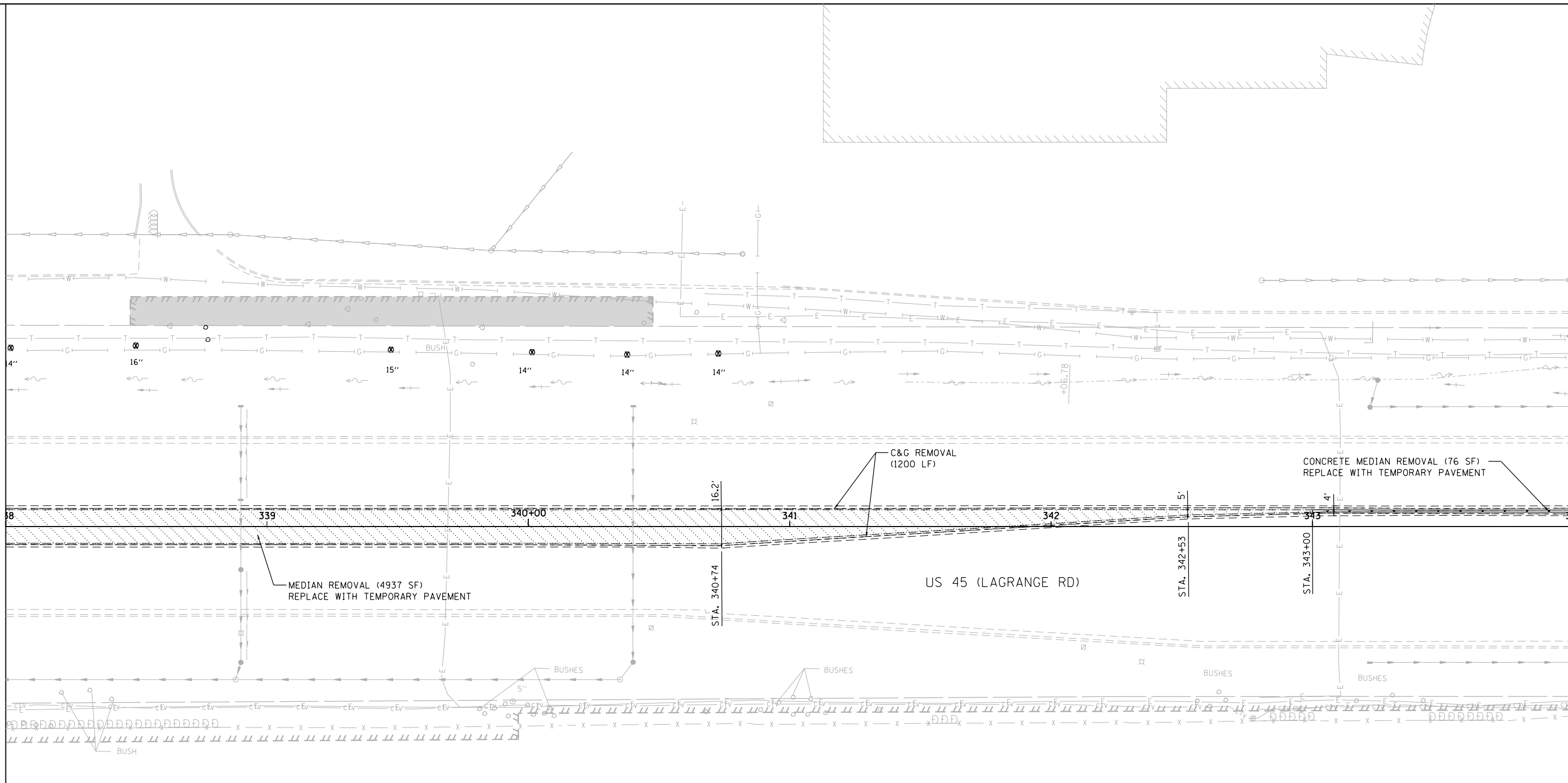


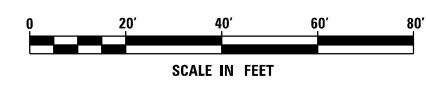
SEE DRAWING P-29  
 MATCH LINE STA. 338+00.00



MATCH LINE STA. 344+00.00  
 SEE DRAWING P-31

**LEGEND**

- |                         |  |  |  |
|-------------------------|--|--|--|
| MEDIAN REMOVAL          |  | PROPOSED STORM SEWER   |  |
| BARRIER MEDIAN REMOVAL  |  | EXISTING STORM SEWER   |  |
| CONCRETE MEDIAN REMOVAL |  | STORM SEWER TO BE PLUGGED AND ABANDONED (REMOVED IN FUTURE CONTRACT) |  |
| SELECTIVE CLEARING      |  | TREE TO BE REMOVED   |  |
| TREE REMOVAL            |  | STORM STRUCTURE TO BE ADJUSTED                                       |  |
| PAVEMENT REMOVAL        |  | SIGN TO BE REMOVED   |  |
| R.O.W. NOT YET ACQUIRED |  | PROPOSED MANHOLE   |  |
|                         |  | FUTURE STORM SEWER   |  |



FILE NAME = D160W09-SHT-DRAINPR30.dgn  
 SHT\_PLAN

USER NAME = Anthony.Plutz  
 DESIGNED - EJD  
 DRAWN - EJD  
 PLOT SCALE = 40.000000' / in.  
 CHECKED - JWM  
 PLOT DATE = 1/7/2013  
 DATE - 01/02/13

REVISED -  
 REVISED -  
 REVISED -  
 REVISED -

**STATE OF ILLINOIS  
 DEPARTMENT OF TRANSPORTATION**

**REMOVAL, TEMPORARY PAVEMENT, AND DRAINAGE PLAN**

SCALE: 1"=20' SHEET 30 OF 37 SHEETS STA. 338+00.00 TO STA. 344+00.00

F.A.P. RTE.	SECTION	COUNTY	TOTAL SHEETS	SHEET NO.
330	2012-0881	COOK	152	55
<b>P-30</b>			CONTRACT NO. 60W09	
ILLINOIS FED. AID PROJECT				