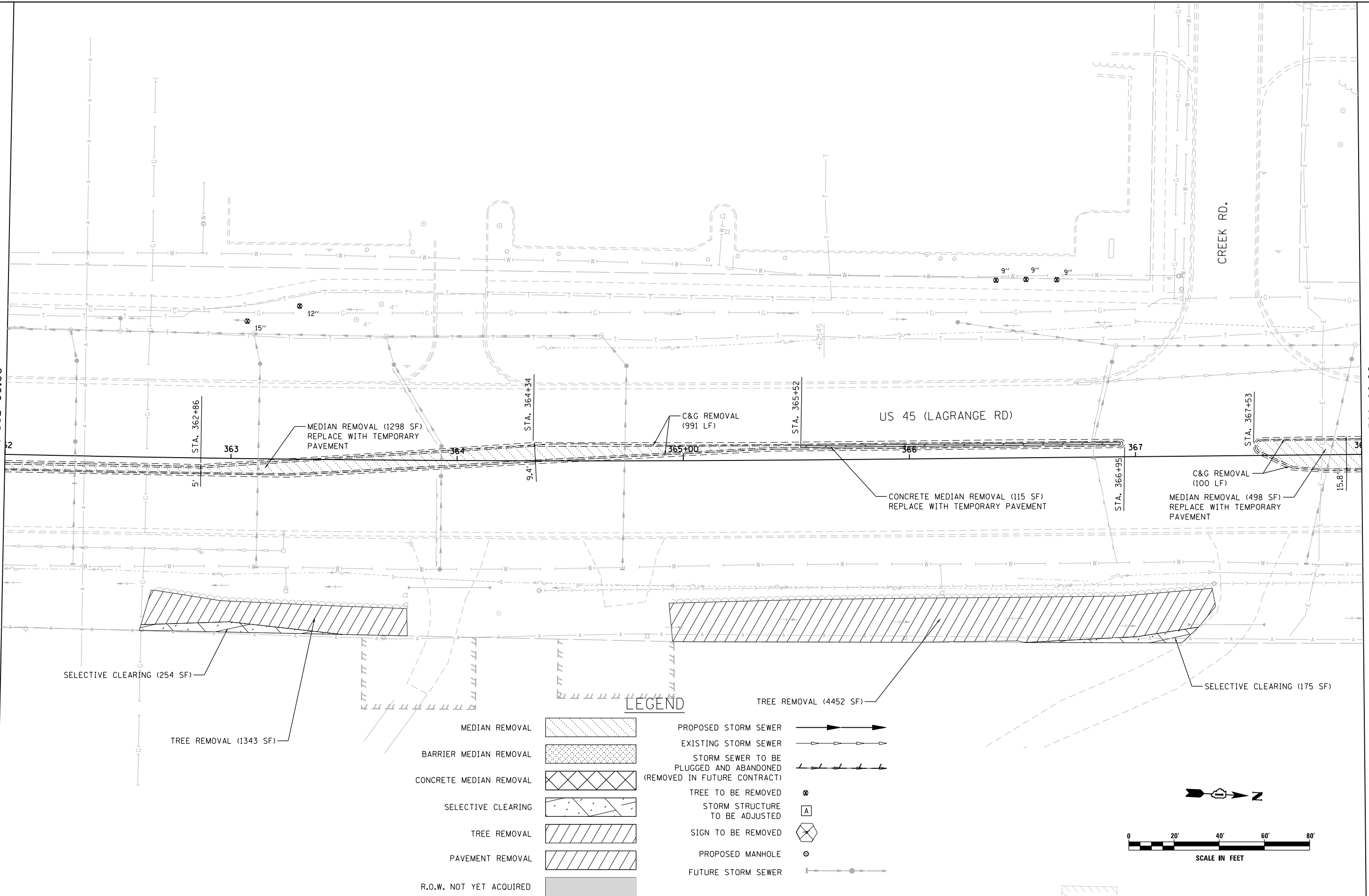


SEE DRAWING P-33
MATCH LINE STA. 362+00.00



MATCH LINE STA. 368+00.00
SEE DRAWING P-35

SELECTIVE CLEARING (254 SF)

TREE REMOVAL (1343 SF)

MEDIAN REMOVAL (1298 SF)
REPLACE WITH TEMPORARY PAVEMENT

C&G REMOVAL (991 LF)

CONCRETE MEDIAN REMOVAL (115 SF)
REPLACE WITH TEMPORARY PAVEMENT

C&G REMOVAL (100 LF)
MEDIAN REMOVAL (498 SF)
REPLACE WITH TEMPORARY PAVEMENT

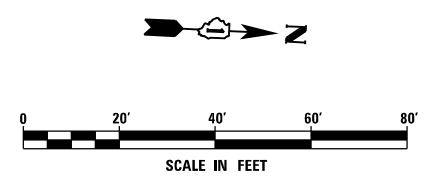
SELECTIVE CLEARING (175 SF)

TREE REMOVAL (4452 SF)

LEGEND

- MEDIAN REMOVAL
- BARRIER MEDIAN REMOVAL
- CONCRETE MEDIAN REMOVAL
- SELECTIVE CLEARING
- TREE REMOVAL
- PAVEMENT REMOVAL
- R.O.W. NOT YET ACQUIRED

- PROPOSED STORM SEWER
- EXISTING STORM SEWER
- STORM SEWER TO BE PLUGGED AND ABANDONED (REMOVED IN FUTURE CONTRACT)
- TREE TO BE REMOVED
- STORM STRUCTURE TO BE ADJUSTED
- SIGN TO BE REMOVED
- PROPOSED MANHOLE
- FUTURE STORM SEWER



FILE NAME = D160W09-SHT-DRAINPR34.dgn	USER NAME = Anthony.Plutz	DESIGNED - EJD	REVISED -
		DRAWN - EJD	REVISED -
	PLOT SCALE = 48.000000' / in.	CHECKED - JWM	REVISED -
SHT.PLAN	PLOT DATE = 1/7/2013	DATE - 01/02/13	REVISED -

**STATE OF ILLINOIS
DEPARTMENT OF TRANSPORTATION**

REMOVAL, TEMPORARY PAVEMENT, AND DRAINAGE PLAN

SCALE: 1"=20' SHEET 34 OF 37 SHEETS STA. 362+00.00 TO STA. 368+00.00

F.A.P. RTE.	SECTION	COUNTY	TOTAL SHEETS	SHEET NO.
330	2012-0881	COOK	152	59
P-34			CONTRACT NO. 60W09	
ILLINOIS FED. AID PROJECT				