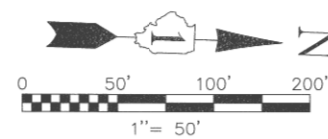


**PT OF NW 1/4 SEC 15 & NE 1/4 SEC 16, T36N, R12E OF THE 3RD PM, COOK CO. IL**

PARCEL No.	OWNER	TOTAL HOLDINGS (ACRES)	PART TAKEN (ACRES)	PREVIOUSLY DEDICATED (ACRES)	REMAINDER (ACRES)	EASEMENT AREA (ACRES)	PERMANENT INDEX NUMBER	PURPOSE OF EASEMENT	ACQUIRED BY	
OH40032TE	LOWE'S HOME CENTERS, INC.	5.307	N/A	N/A	N/A	304 SQ. FT.	27-15-100-052	TEMPORARY		
OH40033	INLAND ORLAND PARK PLACE IV, LLC	3.335	0.066	0.000	3.269	0.125	27-15-100-048	TEMPORARY		
OH40034-A	INLAND ORLAND PARK PLACE, LLC	28.602	0.013	0.000	28.416	0.081	27-15-100-014	TEMPORARY		
OH40034TE-A			0.004	0.000		0.007	N/A	TEMPORARY		
OH40034-B			0.004	0.000		N/A	N/A	TEMPORARY		
OH40034TE-B			0.169	0.000		N/A	N/A	TEMPORARY		
OH40034-C			0.046	0.000		0.000	0.000	TEMPORARY		
OH40035	ORLAND PARK FAMILY, LLC	0.716	0.046	0.000	0.670	0.092	27-15-100-047	TEMPORARY		
OH40036	ORLAND II, LLC, WPC-ORLAND II, LLC & INLAND ORLAND PARK PLACE, LLC	0.915	0.050	0.000	0.865	0.073	27-15-100-045	TEMPORARY		
OH40121-A	IN RETAIL FUND RAVINIA, LLC	9.096	0.001	0.000	9.077	N/A	N/A	N/A		
OH40121-B			0.012	0.000		N/A	N/A	N/A		
OH40121TE			N/A	0.000		N/A	N/A	0.301	TEMPORARY	
OH40122			0.065	0.000		1.659	0.056	27-16-201-015	TEMPORARY	
OH40123	SUBURBAN BANK & TRUST CO.	1.492	0.058	0.000	1.434	0.041	27-16-201-013	TEMPORARY		
OH40124	DARVIN FURNITURE AND APPLIANCE OF ORLAND PARK, INC.	6.427	0.033	0.000	6.394	0.163	27-16-201-024	TEMPORARY		
OH40125	VILLAGE OF ORLAND PARK	33.306*	0.174	0.000	33.132	N/A	27-16-401-012(pt)	N/A		
OH40126	DARVIN FURNITURE AND APPLIANCE OF ORLAND PARK, INC.	3.215	0.011	0.000	3.204	0.036	27-16-201-025	TEMPORARY		

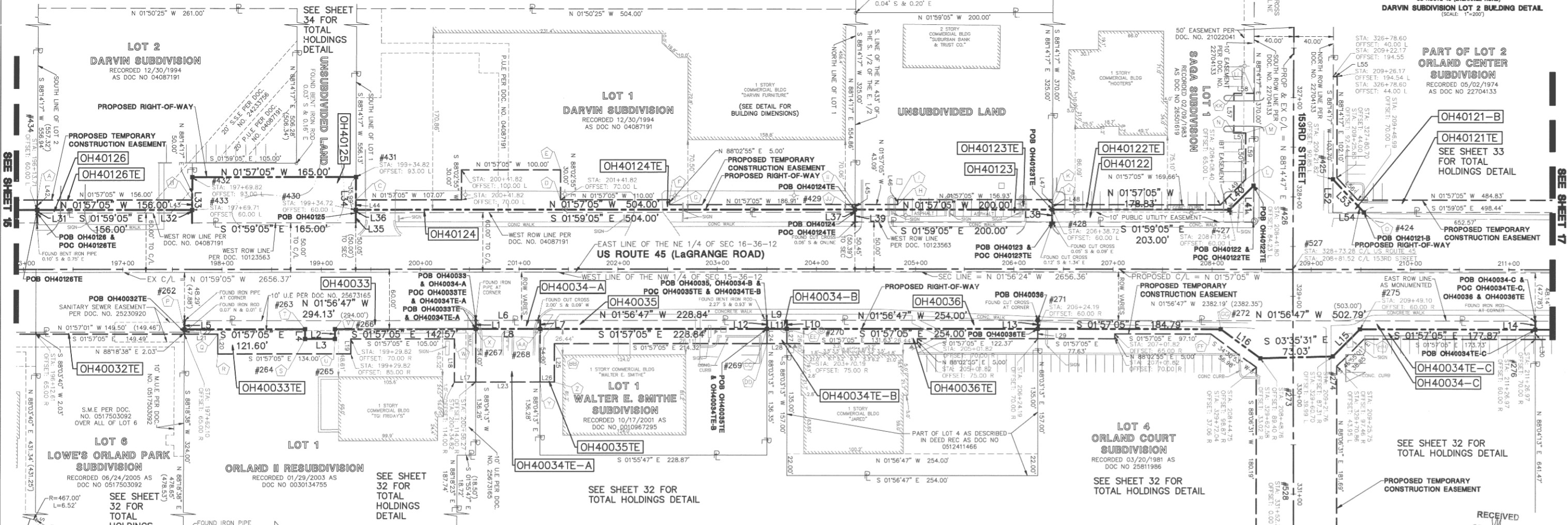
\* AREA WAS SCALED FROM DIGITAL AERIAL PHOTOGRAPHY

CORNER	STATION	OFFSET	CORNER	STATION	OFFSET
A	196+13.75	70.00 L	S	198+83.72	70.00 R
B	197+69.75	70.00 L	T	198+83.72	60.00 R
C	199+34.75	70.00 L	U	199+13.72	70.00 R
D	201+41.82	70.00 L	V	199+13.72	60.00 R
E	201+41.82	100.00 L	W	200+34.82	70.00 R
F	202+51.82	70.00 L	X	200+56.29	60.00 R
G	202+51.82	65.00 L	Y	201+21.28	114.00 R
H	204+81.82	70.00 L	Z	201+35.82	114.00 R
I	204+81.82	65.00 L	AA	201+21.30	60.00 R
J	206+38.74	65.00 L	BB	201+35.82	75.00 R
K	206+38.75	70.00 L	CC	203+50.14	60.00 R
L	208+33.82	90.39 L	DD	203+50.14	75.00 R
M	208+33.82	48.00 L	EE	203+70.41	60.00 R
N	208+33.98	137.44 L	FF	207+98.92	65.00 R
O	208+33.98	48.00 L	GG	208+08.98	60.00 R
P	208+33.98	137.44 L	HH	209+53.24	70.00 R
Q	208+33.98	60.00 R	II	204+38.73	65.00 L
R	209+53.18	57.60 L	JJ	204+38.72	60.00 L
S	197+62.10	65.00 R	KK	208+22.11	177.48 L
T	197+62.10	65.00 R	LL	208+42.11	177.41 L
U	197+62.10	65.00 R		326+96.00	40.00 R



SEE SHEET 52 FOR COORDINATE VALUES FOR CENTERLINE POINTS, SECTIONS CORNERS AND ROW MONUMENTS

F.A.P. ROUTE	SECTION	COUNTY	TOTAL SHEETS	SHEET NO.
330/US 45	131st St to 179th St	COOK	152	70
FED. ROAD DIST. NO. 1	ILLINOIS	FED. AID PROJECT		



LINE	BEARING	LENGTH	LINE	BEARING	LENGTH
L1	N 88°04'13" E	8.68'	L30	N 88°04'13" E	10.00'
L2	N 88°02'55" E	10.00'	L31	S 88°14'17" W	3.17'
L3	S 01°57'05" E	30.00'	L32	N 88°14'17" E	3.08'
L4	S 88°02'55" W	10.00'	L33	S 88°14'17" W	46.08'
L5	S 88°18'38" W	8.70'	L34	N 88°14'17" E	45.99'
L6	N 01°56'47" W	65.00'	L35	N 88°14'17" E	10.00'
L7	N 88°04'13" E	8.67'	L36	N 88°14'17" W	2.99'
L8	S 01°57'05" E	65.00'	L37	N 88°14'17" E	2.99'
L9	N 01°56'47" W	20.00'	L38	N 88°14'17" E	12.98'
L10	N 88°03'13" E	8.65'	L39	S 88°14'17" W	12.99'
L11	S 01°57'05" E	20.05'	L40	N 46°55'01" W	34.28'
L12	S 88°03'13" W	8.65'	L41	N 88°14'17" E	36.69'
L13	N 88°03'13" E	8.63'	L42	S 88°14'17" W	10.00'
L14	N 88°04'13" E	8.58'	L43	N 88°14'17" E	10.00'
L15	S 46°55'01" E	38.64'	L44	S 88°14'17" W	10.00'
L16	S 34°30'53" W	49.46'	L45	N 88°14'17" E	5.00'
L17	S 01°57'05" E	21.45'	L46	S 88°02'55" W	5.00'
L18	S 88°02'55" W	44.00'	L47	N 88°14'17" E	10.00'
L19	N 88°02'55" E	15.00'	L48	N 88°14'17" W	5.00'
L20	S 88°02'55" W	20.00'	L49	N 46°55'01" W	35.93'
L21	S 01°57'05" E	33.72'	L50	S 88°14'17" W	47.05'
L22	S 88°18'38" W	5.00'	L51	S 01°14'53" E	12.00'
L23	S 01°57'05" E	65.00'	L52	S 88°14'17" W	33.27'
L24	N 88°03'13" E	15.00'	L53	N 44°43'21" E	45.70'
L25	N 88°02'55" E	39.00'	L54	S 01°59'05" E	31.47'
L26	S 01°57'05" E	14.54'	L55	N 01°45'43" W	4.00'
L27	N 88°03'13" E	15.00'	L56	N 44°43'21" E	30.84'
L28	S 01°57'05" E	20.05'	L57	S 88°14'17" W	40.00'
L29	N 88°03'13" E	10.00'	L58	N 01°45'43" W	20.00'
			L59	N 88°14'17" E	93.19'

STATE OF ILLINOIS }  
 COUNTY OF DUPAGE } SS  
 I, WILLIAM W. WRIGHT, DO HEREBY DECLARE THAT I HAVE SURVEYED THE PLAT OF HIGHWAYS SHOWN HEREON IN SECTIONS 33 AND 34, TOWNSHIP 36 NORTH, RANGE 12 EAST OF THE THIRD PRINCIPAL MERIDIAN, AND SECTIONS 3, 4, 9, 10, 15, 16, 21, 22, 27, 28, 33 AND 34, TOWNSHIP 36 NORTH, RANGE 12 EAST OF THE THIRD PRINCIPAL MERIDIAN, ALL IN COOK COUNTY, ILLINOIS; THAT THE SURVEY IS TRUE AND COMPLETE AS SHOWN TO THE BEST OF MY KNOWLEDGE AND BELIEF; THAT THE PLAT CORRECTLY REPRESENTS SAID SURVEY; THAT ALL MONUMENTS FOUND AND ESTABLISHED ARE OF PERMANENT QUALITY AND OCCUPY THE POSITIONS SHOWN THEREON AND THAT THE MONUMENTS ARE SUFFICIENT TO ENABLE THE SURVEY TO BE RETRACED, MADE FOR THE DEPARTMENT OF TRANSPORTATION, STATE OF ILLINOIS.

DATED AT CHICAGO, ILLINOIS, THIS 17TH DAY OF OCTOBER, A.D., 2011.

WILLIAM W. WRIGHT  
 ILLINOIS PROFESSIONAL LAND SURVEYOR NO. 3502  
 LICENSE EXPIRES NOVEMBER 30, 2012

DESIGN FIRM LICENSE NO. 184003350  
 LICENSE EXPIRES APRIL 30, 2013

BEARINGS SHOWN HEREON ARE BASED ON ILLINOIS STATE PLANE COORDINATES, EAST ZONE, NORTH AMERICAN DATUM OF 1983. ALL COORDINATE AND DIMENSIONAL VALUES SHOWN HEREON ARE "GROUND" NOT "GRID".

COMBINED SCALE FACTOR (GROUND TO GRID) = 0.999986013

RECEIVED OCT 24 2011 PLATS & LEGALS

IDOT14 - 090746 SHEET 1 IS A COVER SHEET AND IS NOT RECORDED

**Manhard CONSULTING LTD**  
 700 Sycamore Drive, Lombard, IL 60148  
 (630) 951-8800  
 (630) 951-8899  
 Fax: (630) 951-8899  
 Manhard.com  
 Civil Engineers • Surveyors • Water Resources Engineers • Water & Wastewater Engineers  
 Construction Managers • Environmental Scientists • Landscape Architects • Planners

**PLAT OF HIGHWAYS**  
 STATE OF ILLINOIS  
 DEPARTMENT OF TRANSPORTATION  
 FAP 330/US ROUTE 45  
 SECTION: 131st St to 179th St COOK COUNTY  
 PROJECT: JOB NO. R-90-004-07  
 STATION 196+00 TO STATION 210+00

SCALE: 1" = 50' SHEET 16 OF 55

BUREAU OF LAND ACQUISITION  
 201 WEST CENTER COURT  
 SCHAUMBURG, ILLINOIS 60196

RECORDING: RECORDED ON AS DOCUMENT NO.

SCANNED