

PT OF NE 1/4 SEC 33 & NW 1/4 SEC 34, T37N, R12E OF THE 3RD PM, COOK CO. IL

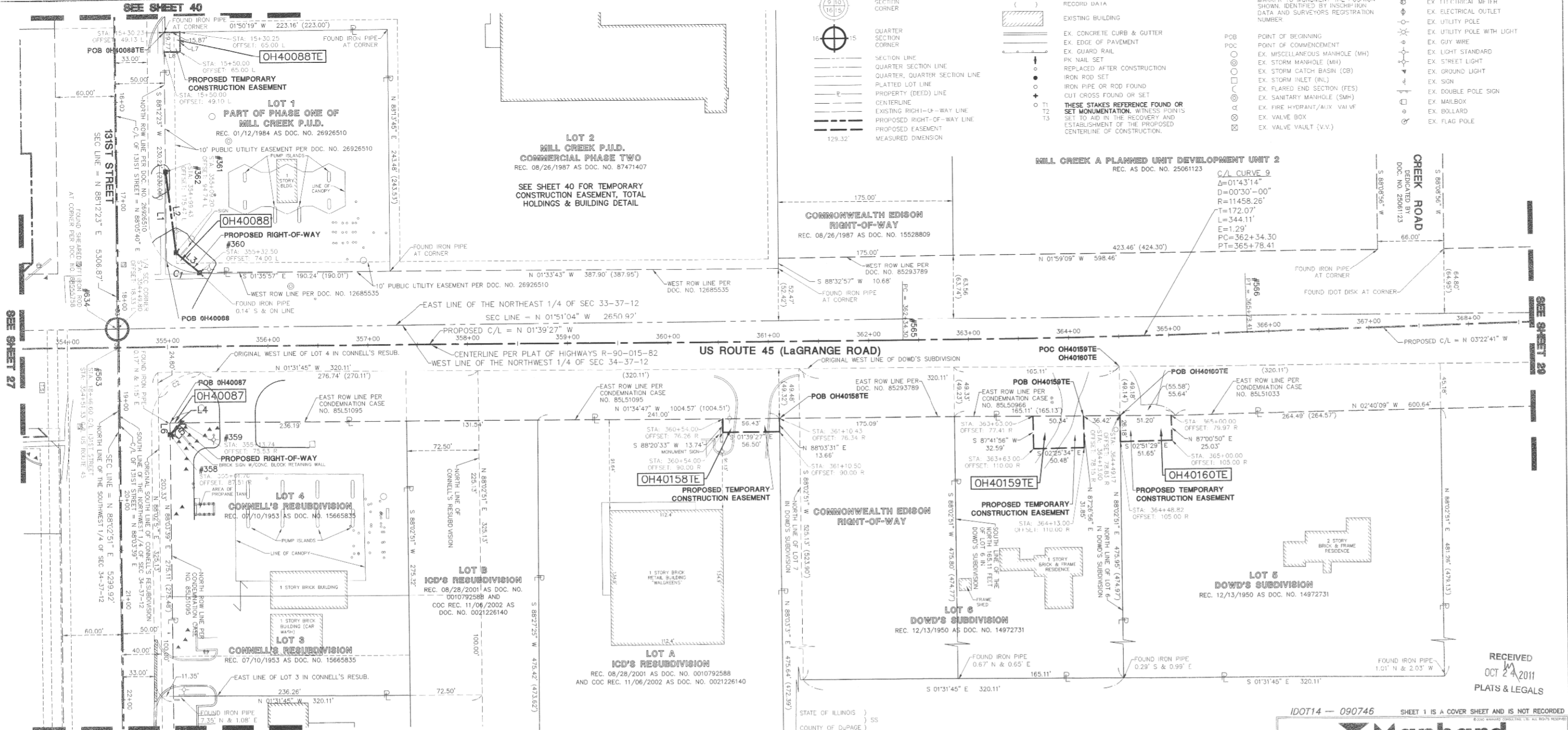
F.A.P. ROUTE	SECTION	COUNTY	TOTAL SHEETS	SHEET NO.
330/US 45	131st St to 179th St	COOK	152	83
STATION 355+00 TO STATION 368+00				
FED. ROAD DIST. NO. 1	ILLINOIS	FED. AID PROJECT		

PARCEL No.	OWNER	TOTAL HOLDINGS (ACRES)	PART TAKEN (ACRES)	PREVIOUSLY DEDICATED (ACRES)	REMAINDER (ACRES)	EASEMENT AREA (ACRES)	PERMANENT INDEX NUMBER	PURPOSE OF EASEMENT	ACQUIRED BY
OH40087	ROK VENTURES, LLC	1.492	72 SQ. FT. 0.002 ACRES	0.000	1.492	N/A	23-34-100-061 23-34-100-062	N/A	
OH40088	ROK VENTURES, LLC	1.242	0.016	0.000	1.226	314 SQ. FT. 0.007 ACRES	23-33-201-012	TEMPORARY	
OH40158TE	HFPWAL, LLC	2.649	N/A	0.000	N/A	N/A	23-34-100-071	TEMPORARY	
OH40159TE	DENNIS L. & LEONA J. OMUNT	1.804	N/A	0.000	N/A	0.037	23-34-100-016	TEMPORARY	
OH40160TE	JOHN, ELLER, DAVID L. & STEVEN ZUMERCHIK	3.514	N/A	0.000	N/A	0.030	23-34-100-012	TEMPORARY	



LEGEND

<ul style="list-style-type: none"> <li>SECTION CORNER</li> <li>QUARTER SECTION CORNER</li> <li>SECTION LINE</li> <li>QUARTER SECTION LINE</li> <li>PLATTED LOT LINE</li> <li>PROPERTY (DEED) LINE</li> <li>CENTERLINE</li> <li>EXISTING RIGHT-OF-WAY LINE</li> <li>PROPOSED RIGHT-OF-WAY LINE</li> <li>PROPOSED EASEMENT</li> <li>MEASURED DIMENSION</li> </ul>	<ul style="list-style-type: none"> <li>129.32' (COMP.)</li> <li>COMPUTED DIMENSION RECORD DATA</li> <li>EXISTING BUILDING</li> <li>EX. CONCRETE CURB &amp; GUTTER</li> <li>EX. EDGE OF PAVEMENT</li> <li>EX. GUARD RAIL</li> <li>PK NAIL SET</li> <li>REPLACED AFTER CONSTRUCTION</li> <li>IRON ROD SET</li> <li>IRON PIPE OR ROD FOUND</li> <li>CUT CROSS FOUND OR SET</li> <li>THESE STAKES REFERENCE FOUND OR SET MONUMENTATION. WITNESS POINTS TO BE USED IN THE RECOVERY AND ESTABLISHMENT OF THE PROPOSED CENTERLINE OF CONSTRUCTION.</li> <li>T1</li> <li>T2</li> <li>T3</li> </ul>	<ul style="list-style-type: none"> <li>STAKING OF PROPOSED RIGHT OF WAY. MARKER TO MONUMENT THE POSITION SHOWN IDENTIFIED BY INSCRIPTION DATA AND SURVEYORS REGISTRATION NUMBER</li> <li>POB POINT OF BEGINNING</li> <li>POC POINT OF COMMENCEMENT</li> <li>EX. MISCELLANEOUS MANHOLE (MH)</li> <li>EX. STORM MANHOLE (MH)</li> <li>EX. STORM CATCH BASIN (CB)</li> <li>EX. STORM INLET (INL)</li> <li>EX. FLARED END SECTION (FES)</li> <li>EX. SANITARY MANHOLE (SMH)</li> <li>EX. FIRE HYDRANT/AIR VALVE</li> <li>EX. VALVE BOX</li> <li>EX. VALVE VAULT (V.V.)</li> <li>EX. IRRIGATION CONTROL BOX</li> <li>EX. ELECTRICAL METER</li> <li>EX. ELECTRICAL OUTLET</li> <li>EX. UTILITY POLE</li> <li>EX. UTILITY POLE WITH LIGHT</li> <li>EX. GUY WIRE</li> <li>EX. LIGHT STANDARD</li> <li>EX. STREET LIGHT</li> <li>EX. SIGN</li> <li>EX. DOUBLE POLE SIGN</li> <li>EX. MAILBOX</li> <li>EX. BOLLARD</li> <li>EX. FLAG POLE</li> </ul>
---	--	--



DATE	BY	MADE	CHECKED	INKED	NO.

CURVE	RADIUS	LENGTH	CHORD BEARING	CHORD	DELTA
C1	50.00'	35.87'	N 18°57'13" E	35.11'	41°08'20"
C2	50.00'	52.13'	S 31°23'57" E	49.80'	59°44'24"

LINE	BEARING	LENGTH
L1	S 88°12'23" W	89.11'
L2	N 81°20'35" E	81.32'
L3	N 40°20'41" E	31.19'
L4	N 01°34'47" W	12.04'
L5	S 46°39'54" E	16.94'
L6	S 88°03'39" W	12.00'
L7	N 88°05'40" E	19.75'
L8	S 01°54'20" E	15.90'

SEE SHEET 52 FOR COORDINATE VALUES FOR CENTERLINE POINTS, SECTIONS CORNERS AND ROW MONUMENTS

STATE OF ILLINOIS }  
COUNTY OF DU PAGE } SS

I, WILLIAM W. WRIGHT, DO HEREBY DECLARE THAT I HAVE SURVEYED THE PLAT OF HIGHWAYS SHOWN HEREON IN SECTIONS 33 AND 34, TOWNSHIP 37 NORTH, RANGE 12 EAST OF THE THIRD PRINCIPAL MERIDIAN, AND SECTIONS 3, 4, 9, 10, 15, 16, 21, 22, 27, 28, 33 AND 34, TOWNSHIP 36 NORTH, RANGE 12 EAST OF THE THIRD PRINCIPAL MERIDIAN, ALL IN COOK COUNTY, ILLINOIS, THAT THE SURVEY IS TRUE AND COMPLETE AS SHOWN TO THE BEST OF MY KNOWLEDGE AND BELIEF; THAT THE PLAT CORRECTLY REPRESENTS SAID SURVEY; THAT ALL MONUMENTS FOUND AND ESTABLISHED ARE OF PERMANENT QUALITY AND OCCUPY THE POSITIONS SHOWN THEREON AND THAT THE MONUMENTS ARE SUFFICIENT TO ENABLE THE SURVEY TO BE RETRACED MADE FOR THE DEPARTMENT OF TRANSPORTATION, STATE OF ILLINOIS.

DATED AT LOMBARD, ILLINOIS THIS 17TH DAY OF OCTOBER A.D., 2011.

*William W. Wright*  
ILLINOIS PROFESSIONAL LAND SURVEYOR NO. 3502  
LICENSE EXPIRES NOVEMBER 30, 2012

DESIGN FIRM LICENSE NO. 184003350  
LICENSE EXPIRES APRIL 30, 2013

BEARINGS SHOWN HEREON ARE BASED ON ILLINOIS STATE PLANE COORDINATES, EAST ZONE, NORTH AMERICAN DATUM OF 1983. ALL COORDINATE AND DIMENSIONAL VALUES SHOWN HEREON ARE "GROUND" NOT "GRID".

COMBINED SCALE FACTOR (GROUND TO GRID) = 0.999966013

10/17/11	ISSUED FINAL SURVEY TO IDOT	WWW
07/27/11	ADDED POINT NUMBERS FOR COORDINATE TABLE	WWW
07/14/11	REVISED OWNERSHIP FOR PARCEL 0087	WWW
02/14/11	PER ENGINEERING CONSULTANT MEMO	BJP
REVISION DATE	DESCRIPTION	INITIALS



IDOT14 - 090746 SHEET 1 IS A COVER SHEET AND IS NOT RECORDED

**Manhard CONSULTING LTD.**  
200 Barringer Drive, Lombard, IL 60148-4808, PH: 630.261.8800, FAX: 630.261.8888  
Civil Engineers • Highway • Water Resource Engineers • Water & Wastewater Engineers  
Construction Managers • Environmental Scientists • Landscape Architects • Planners

**PLAT OF HIGHWAYS**  
STATE OF ILLINOIS  
DEPARTMENT OF TRANSPORTATION  
FAP 330/US ROUTE 45  
SECTION: 131st St to 179th St COOK COUNTY  
PROJECT: JOB NO. R-90-004-07  
STATION 355+00 TO STATION 368+00

SCALE: 1" = 50' SHEET 28 OF 55

BUREAU OF LAND ACQUISITION  
201 WEST CENTER COURT  
SCHAUMBURG, ILLINOIS 60196

RECORDING: RECORDED ON AS DOCUMENT NO.

RECEIVED  
OCT 24 2011  
PLATS & LEGALS