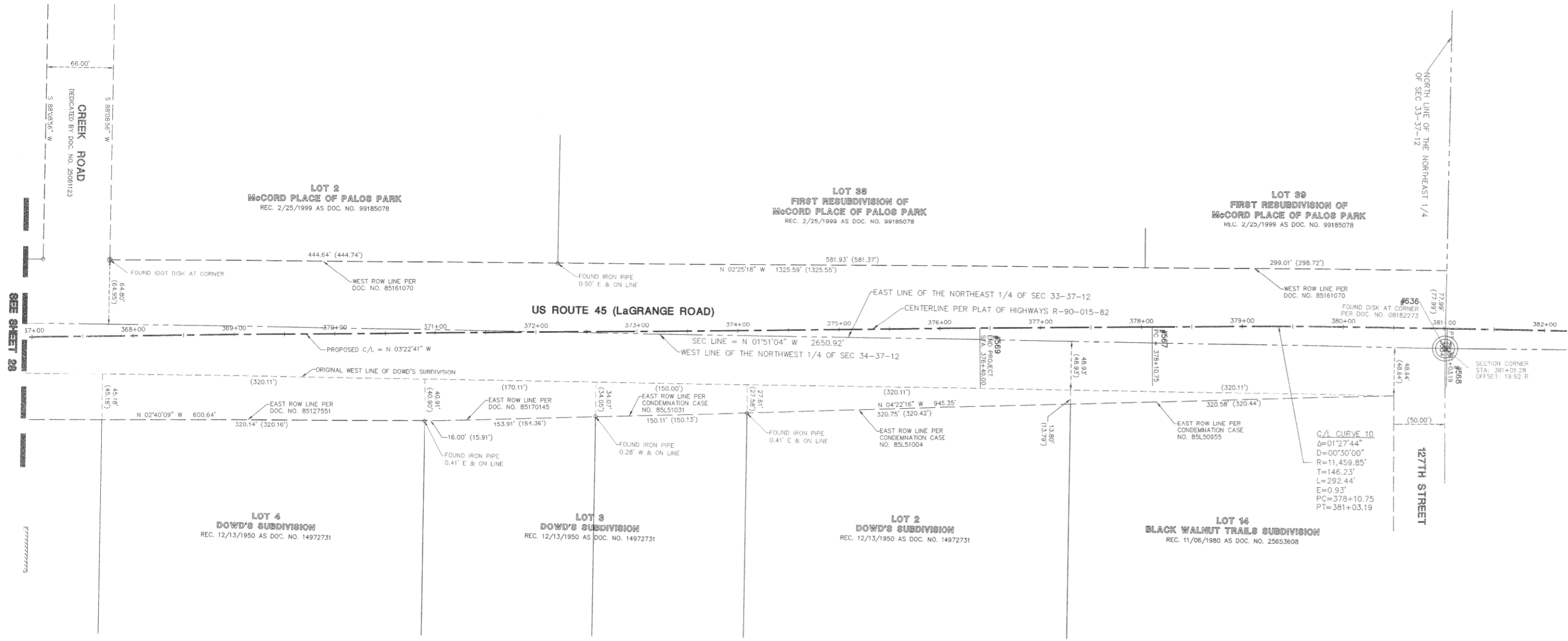
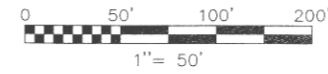


PT OF NE 1/4 SEC 33 & PT OF NW 1/4 SEC 34, T37N, R12E OF THE 3RD PM, COOK CO. IL.

F.A.P. ROUTE	SECTION	COUNTY	TOTAL SHEETS	SHEET NO.
330/US 45	131st St to 179th St	COOK	152	84
STATION 368+00 TO STATION 382+00				
FED. ROAD DIST. NO. 1		ILLINOIS	FED. AID PROJECT	



DATE	
BY	
MADE	
CHECKED	
INKED	
NOTEBOOK NO.	

SEE SHEET 52 FOR COORDINATE VALUES FOR CENTERLINE POINTS, SECTIONS CORNERS AND ROW MONUMENTS

RECEIVED
OCT 24 2011
PLATS & LEGALS

LEGEND	
	SECTION CORNER
	QUARTER SECTION CORNER
	SECTION LINE
	QUARTER SECTION LINE
	PLATTED LOT LINE
	PROPERTY (DEED) LINE
	CENTERLINE
	EXISTING RIGHT-OF-WAY LINE
	PROPOSED RIGHT-OF-WAY LINE
	PROPOSED EASEMENT
	MEASURED DIMENSION
	COMPUTED DIMENSION
	RECORD DATA
	EXISTING BUILDING
	EX. CONCRETE CURB & GUTTER
	EX. EDGE OF PAVEMENT
	EX. GUARD RAIL
	PK NAIL SET
	IRON ROD SET
	IRON PIPE OR ROD FOUND
	CUT CROSS FOUND OR SET
	THESE STAKES REFERENCE FOUND OR SET MONUMENT. WITNESS POINTS SET TO AID IN THE RECOVERY AND ESTABLISHMENT OF THE PROPOSED CENTERLINE OF CONSTRUCTION.
	STAKING OF PROPOSED RIGHT OF WAY. MARKER TO MONUMENT THE POSITION SHOWN, IDENTIFIED BY INSCRIPTION DATA AND SURVEYOR'S REGISTRATION NUMBER.
	POB POINT OF BEGINNING
	POC POINT OF COMMENCEMENT
	EX. MISCELLANEOUS MANHOLE (MH)
	EX. STORM MANHOLE (MH)
	EX. STORM CATCH BASIN (CB)
	EX. STORM INLET (INL)
	EX. FLARED END SECTION (FES)
	EX. SANITARY MANHOLE (SMH)
	EX. FIRE HYDRANT/AUX. VALVE
	EX. VALVE BOX
	EX. VALVE VAULT (V.V.)
	EX. IRRIGATION CONTROL BOX
	EX. ELECTRICAL METER
	EX. ELECTRICAL OUTLET
	EX. UTILITY POLE
	EX. UTILITY POLE WITH LIGHT
	EX. GUY WIRE
	EX. LIGHT STANDARD
	EX. STREET LIGHT
	EX. GROUND LIGHT
	EX. SIGN
	EX. DOUBLE POLE SIGN
	EX. MAILBOX
	EX. DOLLARD
	EX. FLAG POLE

STATE OF ILLINOIS }
COUNTY OF DuPAGE } 55

I, WILLIAM W. WRIGHT, DO HEREBY DECLARE THAT I HAVE SURVEYED THE PLAT OF HIGHWAYS SHOWN HEREON IN SECTIONS 33 AND 34, TOWNSHIP 37 NORTH, RANGE 12 EAST OF THE THIRD PRINCIPAL MERIDIAN, AND SECTIONS 3, 4, 9, 10, 15, 16, 21, 22, 27, 28, 33 AND 34, TOWNSHIP 36 NORTH, RANGE 12 EAST OF THE THIRD PRINCIPAL MERIDIAN, ALL IN COOK COUNTY, ILLINOIS; THAT THE SURVEY IS TRUE AND COMPLETE AS SHOWN TO THE BEST OF MY KNOWLEDGE AND BELIEF; THAT THE PLAT CORRECTLY REPRESENTS SAID SURVEY; THAT ALL MONUMENTS FOUND AND ESTABLISHED ARE OF PERMANENT QUALITY AND OCCUPY THE POSITIONS SHOWN THEREON AND THAT THE MONUMENTS ARE SUFFICIENT TO ENABLE THE SURVEY TO BE RETRACED, MADE FOR THE DEPARTMENT OF TRANSPORTATION, STATE OF ILLINOIS.

DATED AT LOMBARD, ILLINOIS THIS 17TH DAY OF OCTOBER A.D., 2011.

William W. Wright
WILLIAM W. WRIGHT
3502 PROFESSIONAL LAND SURVEYOR STATE OF ILLINOIS
LICENSE EXPIRES NOVEMBER 30, 2012

DESIGN FIRM LICENSE NO. 184003350
LICENSE EXPIRES APRIL 30, 2013

BEARINGS SHOWN HEREON ARE BASED ON ILLINOIS STATE PLANE COORDINATES, EAST ZONE, NORTH AMERICAN DATUM OF 1983. ALL COORDINATE AND DIMENSIONAL VALUES SHOWN HEREON ARE "GROUND" NOT "GRID".

COMBINED SCALE FACTOR (GROUND TO GRID) = 0.999966013

10/17/11	ISSUED FINAL SURVEY TO IDOT	WWW
07/27/11	ADDED POINT NUMBERS FOR COORDINATE TABLE	WWW
REVISION DATE	DESCRIPTION	INITIALS

IDOT14 -- 090746 SHEET 1 IS A COVER SHEET AND IS NOT RECORDED

Manhard CONSULTING LTD
200 Sherman Drive, Lombard, IL 60148 • 630.881.8800 • 1000 East 83rd Street, Suite 100, Chicago, IL 60619
Civil Engineers • Surveyors • Water Resource Engineers • Water & Wastewater Engineers
Construction Managers • Environmental Scientists • Landscape Architects • Planners

PLAT OF HIGHWAYS
STATE OF ILLINOIS
DEPARTMENT OF TRANSPORTATION
FAP 330/US ROUTE 45
SECTION: 131st St to 179th St COOK COUNTY
PROJECT: JOB NO. R-90-004-07
STATION 368+00 TO STATION 382+00

SCALE: 1" = 50' SHEET 29 OF 52

BUREAU OF LAND ACQUISITION
201 WEST CENTER COURT
SCHAUMBURG, ILLINOIS 60196