

INDEX OF SHEETS

- SHEET NO.
- COVER SHEET
 - LEGEND, GENERAL NOTES AND SUMMARY OF QUANTITIES
 - SUMMARY OF QUANTITIES
 - ALIGNMENT, TIES & BENCHMARKS
 - C001: STA 0+00 TO 10+00
 - C002: STA 10+00 TO 15+50 & 54+50 TO 59+50
 - C003: STA 59+50 TO 70+00
 - C004: STA 70+00 TO 81+00
 - C005: STA 81+00 TO 92+00
 - C006: STA 92+00 TO 101+91.45
 - DETAILS
 - BD-01: DRIVEWAY DETAILS -- DISTANCE BETWEEN R.O.W. AND FACE OF CURB & EDGE OF SHOULDER \geq 15' (4.5 M)
 - BD-02: DRIVEWAY DETAILS -- DISTANCE BETWEEN ROW AND FACE OF CURB $<$ 15' (4.5 M)
 - BD-24: CURB OR CURB AND GUTTER REMOVAL AND REPLACEMENT
 - TC-10: TRAFFIC CONTROL AND PROTECTION FOR SIDE ROADS, INTERSECTIONS, AND DRIVEWAYS
 - TC-13: DISTRICT ONE TYPICAL PAVEMENT MARKINGS
 - TC-22: ARTERIAL ROAD INFORMATION SIGN

STATE STANDARDS

- 000001-06 STANDARD SYMBOL, ABBREVIATIONS AND PATTERNS
- 424001-07 PERPENDICULAR CURB RAMPS FOR SIDEWALKS
- 424011-01 CORNER PARALLEL CURB RAMPS FOR SIDEWALKS
- 424026-01 ENTRANCE/ALLEY PEDESTRIAN CROSSINGS
- 701106-02 OFF-RD OPERATIONS, MULTILANE, MORE THAN 15' (4.5m) AWAY
- 701426-05 LANE CLOSURE, MULTILANE, INTERMITTENT OR MOVING OPER., FOR SPEEDS \geq 45 MPH
- 701601-02 URBAN LANE CLOSURE, MULTILANE, 1W OR 2W WITH NONTRAVERSABLE MEDIAN
- 701602-04 URBAN LANE CLOSURE, MULTILANE, 2W WITH BIDIRECTIONAL LEFT TURN LANE
- 701701-08 URBAN LANE CLOSURE, MULTILANE INTERSECTION
- 701801-05 LANE CLOSURE, MULTILANE, 1W OR 2W CROSSWALK OR SIDEWALK CLOSURE
- 701901-02 TRAFFIC CONTROL DEVICES
- 876001-02 PEDESTRIAN PUSH BUTTON POST
- 880006-01 TRAFFIC SIGNAL MOUNTING DETAILS

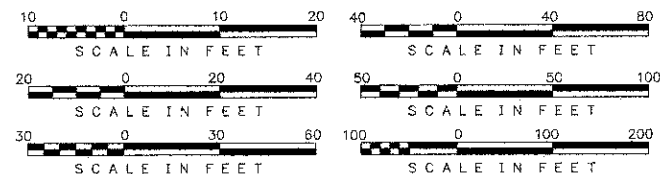
DESIGN DESIGNATION - ARTERIAL

LENGTH OF PROJECT

GROSS LENGTH = 9466 FT = 1.79 MILES
NET LENGTH = 4000 FT = 0.76 MILES

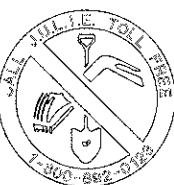
TRAFFIC DATA

DUNDEE ROAD ADT = 35900
SPEED LIMIT = 35 MPH



FULL SIZE PLANS HAVE BEEN PREPARED USING STANDARD ENGINEERING SCALES, REDUCED SIZED PLANS WILL NOT CONFORM TO STANDARD SCALES, IN MAKING MEASUREMENT ON REDUCED PLANS, THE ABOVE SCALES MAY BE USED.

WARNING



CALL
J.U.L.I.E.
BEFORE YOU DIG
1-800-892-0123

CONTRACT NO.: 63614

CONTACT

VILLAGE OF BUFFALO GROVE
CONTACT: GREG BOYSEN
OFFICE: 847-459-2547
FAX: 847-537-5845

BURNS & McDONNELL
CONTACT: ANTHONY BRYANT
OFFICE: 630-724-3200
FAX: 630-724-3201

COOK COUNTY
CONTACT: BHANU VYAS, P.E.
OFFICE: 312-603-1670
FAX: 312-603-9945

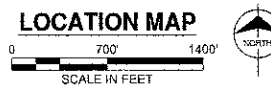
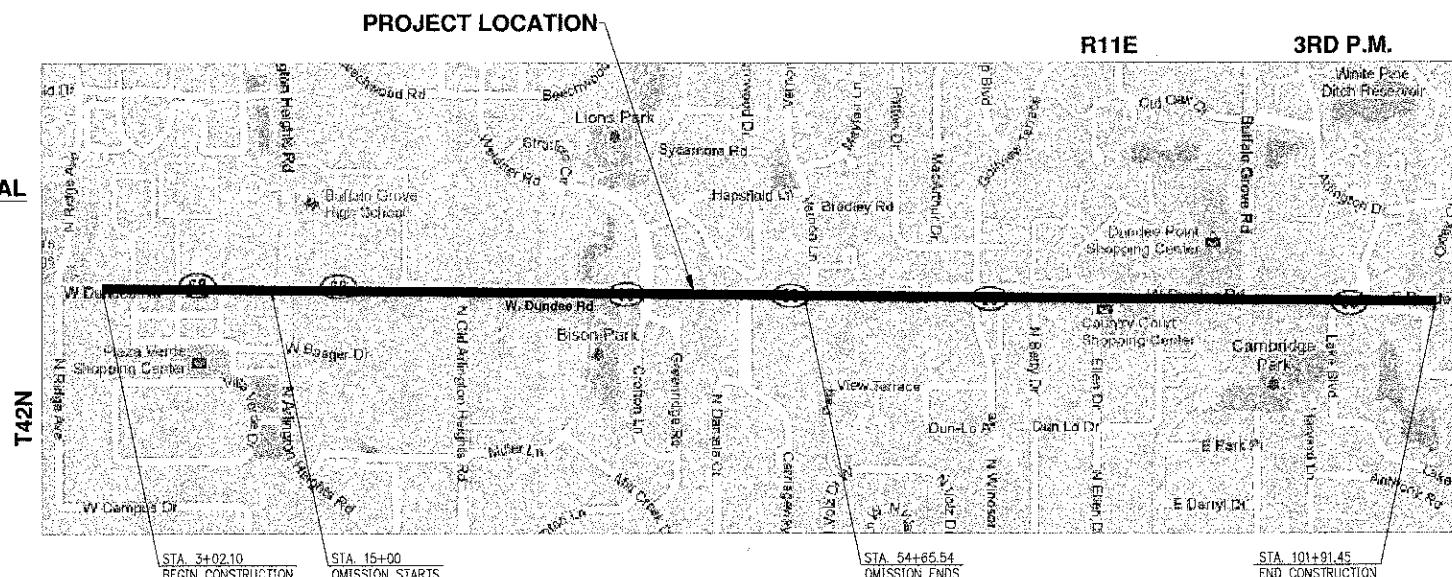
STATE OF ILLINOIS
DEPARTMENT OF TRANSPORTATION
DIVISION OF HIGHWAYS

**PLANS FOR PROPOSED
FEDERAL AID HIGHWAY**

FAP 343 (DUNDEE ROAD / ILLINOIS ROUTE 68)
SECTION NO.: 08-00095-00-SW
RIDGE ROAD TO HUNTINGTON LANE

MULTI-USE PATH IMPROVEMENT
PROJECT NO.: CMM-9003 (263)
JOB NO.: C-91-387-09

VILLAGE OF BUFFALO GROVE
COOK COUNTY



F.A.P. RTE.	SECTION	COUNTY	TOTAL SHEETS	SHEET NO.
343	08-00095-00-SW	COOK	17	1
FEDERAL RD. DIST. NO.		ILLINOIS FEDERAL AID PROJECT		
CONTRACT: 63614				



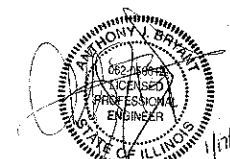
STATE OF ILLINOIS
DEPARTMENT OF TRANSPORTATION
DIVISION OF HIGHWAYS

Approved: *Gregory P. Boyesen*

Village of Buffalo Grove, *William P. W. Dirksen*

Pressed: *MAY 22, 2012*
C. H. [Signature]

Releasing for bid
Based on limited
Review: *MAY 24, 2012*
Diana M. O'Keefe



ANTHONY J. BRYANT, P.E.
NO. 062-056612
EXP. DATE: 11/30/2009

**PRINTED BY THE AUTHORITY
OF THE STATE OF ILLINOIS**



IL DESIGN FIRM NO.
184-001310