

INDEX OF SHEETS

- 03-08-13 LETTING ITEM 138
1. COVER SHEET
 2. LEGEND, GENERAL NOTES AND SUMMARY OF QUANTITIES
 3. SUMMARY OF QUANTITIES
 4. ALIGNMENT, TIES & BENCHMARKS
 5. C001: STA 0+00 TO 10+00
 6. C002: STA 10+00 TO 15+50 & 54+50 TO 59+50
 7. C003: STA 59+50 TO 70+00
 8. C004: STA 70+00 TO 81+00
 9. C005: STA 81+00 TO 92+00
 10. C006: STA 92+00 TO 101+91.45
 11. DETAILS
 12. BD-01: DRIVEWAY DETAILS -- DISTANCE BETWEEN R.O.W. AND FACE OF CURB & EDGE OF SHOULDER \geq 15' (4.5 M)
 13. BD-02: DRIVEWAY DETAILS -- DISTANCE BETWEEN ROW AND FACE OF CURB $<$ 15' (4.5 M)
 14. BD-24: CURB OR CURB AND GUTTER REMOVAL AND REPLACEMENT
 15. TC-10: TRAFFIC CONTROL AND PROTECTION FOR SIDE ROADS, INTERSECTIONS, AND DRIVEWAYS
 16. TC-13: DISTRICT ONE TYPICAL PAVEMENT MARKINGS
 17. TC-22: ARTERIAL ROAD INFORMATION SIGN

STATE STANDARDS

- 000001-06 STANDARD SYMBOL, ABBREVIATIONS AND PATTERNS
- 424001-07 PERPENDICULAR CURB RAMPS FOR SIDEWALKS
- 424011-01 CORNER PARALLEL CURB RAMPS FOR SIDEWALKS
- 424026-01 ENTRANCE/ALLEY PEDESTRIAN CROSSINGS
- 701106-02 OFF-RD OPERATIONS, MULTILANE, MORE THAN 15' (4.5m) AWAY
- 701426-05 LANE CLOSURE, MULTILANE, INTERMITTENT OR MOVING OPER., FOR SPEEDS \geq 45 MPH
- 701601-02 URBAN LANE CLOSURE, MULTILANE, 1W OR 2W WITH NONTRAVERSABLE MEDIAN
- 701602-04 URBAN LANE CLOSURE, MULTILANE, 2W WITH BIDIRECTIONAL LEFT TURN LANE
- 701701-08 URBAN LANE CLOSURE, MULTILANE INTERSECTION
- 701801-05 LANE CLOSURE, MULTILANE, 1W OR 2W CROSSWALK OR SIDEWALK CLOSURE
- 701901-02 TRAFFIC CONTROL DEVICES
- 876001-02 PEDESTRIAN PUSH BUTTON POST
- 880006-01 TRAFFIC SIGNAL MOUNTING DETAILS

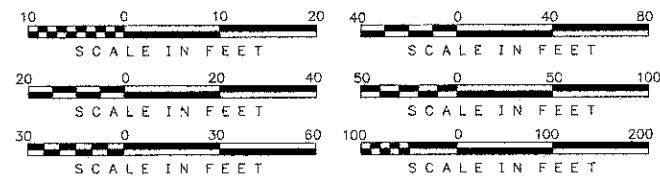
DESIGN DESIGNATION - ARTERIAL

LENGTH OF PROJECT

GROSS LENGTH = 9466 FT = 1.79 MILES
 NET LENGTH = 4000 FT = 0.76 MILES

TRAFFIC DATA

DUNDEE ROAD ADT = 35900
 SPEED LIMIT = 35 MPH



FULL SIZE PLANS HAVE BEEN PREPARED USING STANDARD ENGINEERING SCALES, REDUCED SIZED PLANS WILL NOT CONFORM TO STANDARD SCALES, IN MAKING MEASUREMENT ON REDUCED PLANS, THE ABOVE SCALES MAY BE USED.

WARNING



CALL
J.U.L.I.E.
 BEFORE YOU DIG
 1-800-892-0123

CONTRACT NO.: 63614

CONTACT

VILLAGE OF BUFFALO GROVE
 CONTACT: GREG BOYSEN
 OFFICE: 847-459-2547
 FAX: 847-537-5845

BURNS & MCDONNELL
 CONTACT: ANTHONY BRYANT
 OFFICE: 630-724-3200
 FAX: 630-724-3201

COOK COUNTY
 CONTACT: BHANU VYAS, P.E.
 OFFICE: 312-603-1670
 FAX: 312-603-9945

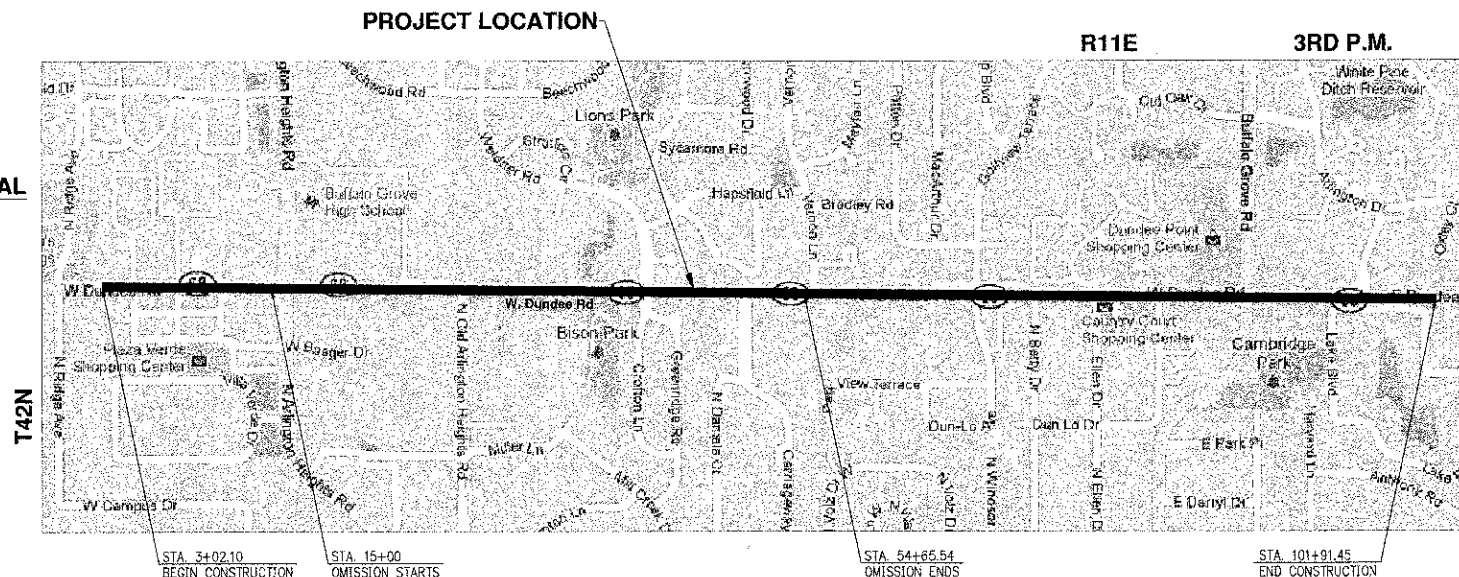
STATE OF ILLINOIS
 DEPARTMENT OF TRANSPORTATION
 DIVISION OF HIGHWAYS

**PLANS FOR PROPOSED
 FEDERAL AID HIGHWAY**

FAP 343 (DUNDEE ROAD / ILLINOIS ROUTE 68)
 SECTION NO.: 08-00095-00-SW
 RIDGE ROAD TO HUNTINGTON LANE

MULTI-USE PATH IMPROVEMENT
 PROJECT NO.: CMM-9003 (263)
 JOB NO.: C-91-387-09

VILLAGE OF BUFFALO GROVE
 COOK COUNTY



F.A.P. RTE.	SECTION	COUNTY	TOTAL SHEETS	SHEET NO.
343	08-00095-00-SW	COOK	17	1
FEDERAL RD. DIST. NO.		ILLINOIS FEDERAL AID PROJECT		
CONTRACT: 63614				



STATE OF ILLINOIS
 DEPARTMENT OF TRANSPORTATION
 DIVISION OF HIGHWAYS

Approved: *Gregory P. Boyesen*

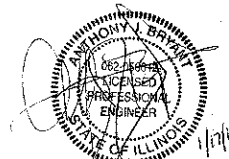
Village of Buffalo Grove, *William P. W. Dirksen*

Pressed: *MAY 22, 2012*

Released for bid: *COOK COUNTY*

Revised on: *MAY 24, 2012*

Revised by: *Diana M. O'Keefe*



ANTHONY J. BRYANT, P.E.
 NO. 062-056612
 EXP. DATE: 11/30/2009

**PRINTED BY THE AUTHORITY
 OF THE STATE OF ILLINOIS**

PROGRAM AND OFFICE ENGINEER: CHARLES F. RIDDLE, P.E. 847-705-4406 SCHAUMBURG, ILLINOIS



IL DESIGN FIRM NO.
 184-001310

SPECIFICATIONS, STANDARDS AND SPECIAL PROVISIONS

ALL REFERENCES TO STANDARD SPECIFICATIONS IN THESE GENERAL NOTES SHALL BE INTERPRETED TO MEAN THE "STANDARD SPECIFICATIONS FOR ROAD AND BRIDGE CONSTRUCTION" ADOPTED BY THE ILLINOIS DEPARTMENT OF TRANSPORTATION, JANUARY 1, 2012 AND THE SUPPLEMENTAL SPECIFICATIONS AND RECURRING SPECIAL PROVISIONS, ADOPTED JANUARY 1, 2012.

ALL CONSTRUCTION SHALL BE IN ACCORDANCE WITH THE STANDARD SPECIFICATIONS; THE LATEST EDITION OF THE "MANUAL ON UNIFORM TRAFFIC CONTROL DEVICES FOR STREETS AND HIGHWAYS" (MUTCD); THE DETAILS IN THE PLANS AND THE SPECIAL PROVISIONS, IDOT STANDARD DRAWINGS, VILLAGE OF BUFFALO GROVE, VILLAGE OF ARLINGTON HEIGHTS, AND VILLAGE OF WHEELING.

ALL REFERENCE TO "ENGINEER" SHALL BE INTERPRETED AS THE RESIDENT ENGINEER.

DISTRICT ONE DETAILS:

- BD-01 DRIVEWAY DETAILS DISTANCE BETWEEN R.O.W. AND FACE OF CURB/EDGE OF SHOULDER \geq 15'
- BD-02 DRIVEWAY DETAILS DISTANCE BETWEEN R.O.W. AND FACE OF CURB < 15' (4.5M)
- BD-24 CURB OR CURB AND GUTTER REMOVAL AND REPLACEMENT
- BD-32 BUTT JOINT AND HMA TAPER DETAILS
- TC-10 TRAFFIC CONTROL AND PROTECTION FOR SIDE ROADS, INTERSECTIONS, AND DRIVEWAYS
- TC-13 DISTRICT ONE TYPICAL PAVEMENT MARKINGS
- TC-22: ARTERIAL ROAD INFORMATION SIGN

EARTHWORK SCHEDULE		
LOCATION	REMOVAL AND DISPOSAL OF UNSUITABLE MATERIAL (CU. YD.)	TOPSOIL FURNISH AND PLACE, 4" (SQ. YD.)
C001 STA. 00+07 TO STA. 10+00	457	3590
C002 STA. 10+00 TO STA. 59+50	145	167
C003 STA. 59+50 TO STA. 70+00	306	332
C004 STA. 70+00 TO STA. 77+88	227	336
C005 STA. 83+07 TO STA. 92+00	106	350
C006 STA. 92+00 TO STA. 94+72	132	728
TOTAL	1373	5503

HOT-MIX ASPHALT MIXTURE REQUIREMENTS	
MIXTURE TYPE	AIR VOIDS @ Ndes
DRIVEWAYS	
HMA SURFACE COURSE, MIX D, N 50 (IL 9.5 mm); 2"	4% @ 50 GYR
HMA BASE COURSE (HMA BINDER IL-19 mm); PE - 6" (3 LIFTS), CE - 8" (4 LIFTS)	4% @ 50 GYR

THE UNIT WEIGHT USED TO CALCULATE ALL HMA SURFACE MIXTURE QUANTITIES IS 112 LBS/SQ YD/IN.

THE "AC TYPE" FOR POLYMERIZED HMA MIXES SHALL BE SBS/SBR PG76-22" AND FOR NONPOLYMERIZED HMA THE "AC TYPE" SHALL BE "PG 64-22" UNLESS MODIFIED BY DISTRICT ONE.

FOR PERCENT OF RAP SEE DISTRICT ONE SPECIAL PROVISIONS.

GENERAL NOTES

1. THE CONTRACTOR SHALL NOTIFY J.U.L.I.E. (800-892-0123) AT LEAST 48 HOURS PRIOR TO CONSTRUCTION FOR LOCATIONS OF UTILITIES, AND SHALL BE RESPONSIBLE FOR THE PROTECTION OF THE SAME.
2. THE CONTRACTOR SHALL CONTACT IDOT TRAFFIC CONTROL SUPERVISOR AT (847) 705-4470 A MINIMUM OF 72 HOURS PRIOR TO BEGINNING ANY WORK IN STATE ROW.
3. THE CONTRACTOR SHALL NOTIFY BURNS & McDONNELL (THE ENGINEER), IDOT, THE VILLAGE OF BUFFALO GROVE & THE VILLAGE OF WHEELING AT LEAST 48 HOURS IN ADVANCE OF CONSTRUCTION. NO UNDERGROUND WORK SHALL BE COVERED UNTIL IT HAS BEEN INSPECTED. APPROVAL TO PROCEED MUST BE OBTAINED FROM THE ENGINEER PRIOR TO POURING ANY CONCRETE AFTER FORMS HAVE BEEN SET.
4. CONTRACTORS ARE CAUTIONED AGAINST INSTITUTING ANY CHANGES AND/OR SUBSTITUTIONS TO THE PROJECT REPRESENTED BY THESE DRAWINGS WITHOUT PRIOR WRITTEN APPROVAL BY THE ENGINEER. VISUAL CONTACT WITH THESE DRAWINGS SHALL CONSTITUTE CONCLUSIVE EVIDENCE OF ACCEPTANCE OF THESE RESTRICTIONS.
5. WRITTEN DIMENSIONS ON THESE DRAWINGS SHALL TAKE PRECEDENCE OVER SCALED DIMENSIONS. CONTRACTORS SHALL VERIFY AND BE RESPONSIBLE FOR ALL ELEVATIONS, DIMENSIONS, AND CONDITIONS ON THE JOB. THE ENGINEER SHALL BE NOTIFIED AS SOON AS POSSIBLE OF ANY VARIATIONS FROM THE DIMENSIONS AND CONDITIONS SHOWN ON THESE DRAWINGS.
6. THE CONTRACTOR SHALL BE RESPONSIBLE FOR THE PROTECTION OF ALL PUBLIC AND PRIVATE UTILITIES, EVEN THOUGH THEY MAY NOT BE SHOWN ON THE DRAWINGS. ANY UTILITY DAMAGES DURING CONSTRUCTION SHALL BE REPAIRED OR REPLACED TO THE SATISFACTION OF THE OWNER AT THE CONTRACTOR'S EXPENSE.
7. THE CONTRACTOR SHALL BE RESPONSIBLE FOR REMOVING IMMEDIATELY ANY MUD, DIRT, OR DEBRIS DEPOSITED ON ROADWAYS FROM ANY VEHICLES EXITING OR ENTERING THE SITE.
8. THE CONTRACTOR IS ESPECIALLY ALERTED TO THE FACT THAT IT IS HIS RESPONSIBILITY TO GUARD AND PROTECT NEWLY POURED CONCRETE AGAINST ANY FOREIGN MARKINGS, GRAFFITI OR OTHER DAMAGE, AND AT HIS EXPENSE, REPLACE ANY SIDEWALK NOT ACCEPTABLE TO THE ENGINEER.
9. TRAFFIC CONTROL SHALL CONFORM TO IDOT'S HIGHWAY STANDARDS AND THE "MANUAL ON UNIFORM TRAFFIC CONTROL DEVICES FOR STREETS AND HIGHWAYS" AT ALL TIMES DURING CONSTRUCTION. TRAFFIC CONTROL SHALL INCLUDE ADVANCE WARNING LANE CLOSURE SIGNAGE, AN ARROW BOARD AND TYPE II BARRICADES OR DRUMS.
10. THE CONTRACTOR SHALL COORDINATE CONSTRUCTION ACTIVITIES WITH UTILITY COMPANIES AND THE VILLAGE OF BUFFALO GROVE.
11. ANY SIGNAGE AFFECTED DURING CONSTRUCTION SHALL BE REPLACED TO ITS ORIGINAL CONDITION (OR REPLACED) AND LOCATION (OR AS CLOSE AS REASONABLE).
12. THE RESIDENT ENGINEER SHALL CONTACT WALTER CZARNY, IDOT AREA TRAFFIC FIELD ENGINEER, AT 847-715-8419 A MINIMUM OF 2 WEEKS PRIOR TO PLACING PERMANENT PAVEMENT MARKINGS.
13. THE GENERAL CONTRACTOR IS REQUIRED TO HIRE AN ENVIRONMENTAL FIRM WITH AT LEAST FIVE (5) DOCUMENTED LEAKING UNDERGROUND STORAGE TANK CLEANUPS OR THAT IS PRE-QUALIFIED IN HAZARDOUS WASTE IN THE DEPARTMENT TO REMEDIATE THE SOIL CONTAMINATION AND MONITOR FOR WORKERS PROTECTION.

TREE SCHEDULE

Tree Removal		Proposed Tree	
Station	Offset	Station	Offset
4+90.88	39.79 LT	56+25.86	34.92 LT
6+65.98	40.84 LT	56+75.98	35.86 LT
8+35.03	40.23 LT	57+25.25	35.73 LT
11+60.63	46.75 LT	58+77.20	34.95 LT
12+33.48	47.37 LT	71+48.59	42.85 LT
12+73.17	47.49 LT	71+83.46	43.22 LT
13+12.93	46.61 LT	72+25.86	43.45 LT
64+80.56	39.77 LT	72+61.86	43.14 LT
68+31.74	42.67 LT	72+93.91	42.96 LT
68+69.72	42.00 LT	73+28.78	42.89 LT
69+00.94	42.43 LT	73+63.70	42.86 LT
69+42.06	42.20 LT	73+98.02	42.74 LT
69+79.83	42.52 LT	74+46.53	43.52 LT
70+24.43	44.34 LT	74+80.10	43.62 LT
70+74.74	47.76 LT	75+27.32	44.06 LT
71+19.22	50.16 LT	77+61.87	48.22 LT
74+50.66	55.25 LT	84+66.29	48.03 LT

PLAN	DATE
NO.	
REVISIONS	
BY	
DATE	
CHECKED	
DATE	
NOTED	
DATE	
NO.	

PROFILE	DATE
NO.	
REVISIONS	
BY	
DATE	
CHECKED	
DATE	
NOTED	
DATE	
NO.	

SUMMARY OF QUANTITIES

SP	CODE NO.	ITEM	UNIT	TOTAL QUANTITY	CONSTRUCTION CODE		
					CMAQ		
					100% VILLAGE	80% FED 20% VILLAGE	
					STREETSCAPE 0031	ROADWAY 0021	
					URBAN	URBAN	
	20100110	TREE REMOVAL (6 TO 15 UNITS DIAMETER)	UNIT	235		235	
	20100210	TREE REMOVAL (OVER 15 UNITS DIAMETER)	UNIT	58		58	
	20101000	TEMPORARY FENCE	FOOT	175		175	
Δ	20101200	TREE ROOT PRUNING	EACH	8		8	
Δ	20101400	NITROGEN FERTILIZER NUTRIENT	POUND	53		53	
Δ	20101500	PHOSPHORUS FERTILIZER NUTRIENT	POUND	53		53	
Δ	20101600	POTASSIUM FERTILIZER NUTRIENT	POUND	53		53	
	20201200	REMOVAL AND DISPOSAL OF UNSUITABLE MATERIAL	CU YD	1363		1363	
Δ	21101615	TOPSOIL FURNISH AND PLACE, 4"	SQ YD	5024		5024	
Δ	25200110	SODDING, SALT TOLERANT	SQ YD	5024		5024	
Δ	25200200	SUPPLEMENTAL WATERING	UNIT	38		38	
	28000510	INLET FILTERS	EACH	27		27	
	35101500	AGGREGATE BASE COURSE, TYPE B	CU YD	683		683	
	35501308	HOT-MIX ASPHALT BASE COURSE, 6"	SQ YD	3		3	
	35501316	HOT-MIX ASPHALT BASE COURSE, 8"	SQ YD	21		21	
	40201000	AGGREGATE FOR TEMPORARY ACCESS	TON	24		24	
	40603335	HOT-MIX ASPHALT SURFACE COURSE, MIX "D", NS0	TON	2		2	
	42300400	PORTLAND CEMENT CONCRETE DRIVEWAY PAVEMENT, 8 INCH	SQ YD	769		769	
	42400200	PORTLAND CEMENT CONCRETE SIDEWALK 5 INCH	SQ FT	31254		31254	
	42400400	PORTLAND CEMENT CONCRETE SIDEWALK 7 INCH	SQ FT	5543		5543	
	42400800	DETECTABLE WARNINGS	SQ FT	834		834	
	44000200	DRIVEWAY PAVEMENT REMOVAL	SQ YD	1410		1410	
	44000500	COMBINATION CONCRETE CURB AND GUTTER REMOVAL	FOOT	851		851	
	44000600	SIDEWALK REMOVAL	SQ FT	17892		17892	
	60255500	MANHOLES TO BE ADJUSTED	EACH	5		5	
	60603800	COMBINATION CONCRETE CURB & GUTTER, TYPE B-8.12	FOOT	793		793	

SP	CODE NO.	ITEM	UNIT	TOTAL QUANTITY	CONSTRUCTION CODE		
					CMAQ		
					100% VILLAGE	80% FED 20% VILLAGE	
					STREETSCAPE 0031	ROADWAY 0021	
					URBAN	URBAN	
	63200310	GUARDRAIL REMOVAL	FOOT	14		14	
	63700175	CONCRETE BARRIER, SINGLE FACE, 42-INCH HEIGHT	FOOT	290		290	
	67100100	MOBILIZATION	L SUM	1		1	
Δ	68900200	NON-SPECIAL WASTE DISPOSAL	CU YD	2000		2000	
Δ	68900450	SPECIAL WASTE PLANS AND REPORTS	L SUM	1		1	
Δ	68900530	SOIL DISPOSAL ANALYSIS	EACH	5		5	
	70102630	TRAFFIC CONTROL AND PROTECTION, STANDARD 701601	L SUM	1		1	
	70102632	TRAFFIC CONTROL AND PROTECTION, STANDARD 701602	L SUM	1		1	
	70102635	TRAFFIC CONTROL AND PROTECTION, STANDARD 701701	L SUM	1		1	
	70102640	TRAFFIC CONTROL AND PROTECTION, STANDARD 701801	L SUM	1		1	
Δ	78000100	THERMOPLASTIC PAVEMENT MARKING - LETTERS AND SYMBOLS	SQ FT	22		22	
Δ	78000400	THERMOPLASTIC PAVEMENT MARKING - LINE 6"	FOOT	534		534	
Δ	78000650	THERMOPLASTIC PAVEMENT MARKING - LINE 24"	FOOT	16		16	
Δ	B2003116	TREE, MALUS CORALBURST, (CORALBURST CRABAPPLE), 2" CALIPER, TREE FORM, BALLED AND BURLAPPED	EACH	18		18	
Δ	C2C06918	SHRUB, SPIREA X BUMALDA GOLDFLAME (GOLD FLAME BUMALDA SPIREA), 18" HEIGHT CONTAINER	EACH	5		5	
Δ	C2C12924	SHRUB VIBURNUM TRILOBUM BAILEY COMPACT (BAILEY COMPACT AMERICAN GRANBERRY VIBURNUM), 2' HEIGHT, CONTAINER	EACH	10		10	
Δ	C2C15761	SHRUB, SPIREA JAPONICA NEON FLASH (NEON FLASH JAPANESE SPIREA), 18" HEIGHT, 5 GALLON CONTAINER	EACH	11		11	
Δ	K0012990	PERENNIAL PLANTS, ORNAMENTAL TYPE, GALLON POT	UNIT	24		24	
Δ	K0028930	SHRUB REMOVAL	EACH	57		57	
Δ	X0324915	RELOCATE LIGHTING UNITS AND POLES	EACH	2		2	
Δ	XX000959	TRASH RECEPTACLES	EACH	4		4	
Δ	XX002133	RELOCATE SIGN AND BASE	EACH	2		2	
Δ	XX008429	SIDEWALK, SPECIAL	SQ FT	126		126	
Δ	XX008868	STAMPED COLORED PORTLAND CEMENT CONCRETE	SQ FT	480		480	
Δ	Z0003850	BENCHES	EACH	4		4	
	Z0013798	CONSTRUCTION LAYOUT	L SUM	1		1	
Δ	Z0030850	TEMPORARY INFORMATION SIGNING	SQ FT	27		27	
	Z0062000	SAW CUTTING	FOOT	1598		1598	
	Z0076600	TRAINEES	HOOR	500		500	
	Z0076600	TRAINEES TPG	HOOR	500		500	

Δ SPECIALTY ITEMS

PLAN SURVEILED BY DATE
 CHECKED BY DATE
 DRAWN BY DATE
 IN CHARGE BY DATE
 NO. OF SHEETS
 NO. OF THIS SHEET

PROJECT TITLE
 DATE
 NO. OF SHEETS
 NO. OF THIS SHEET

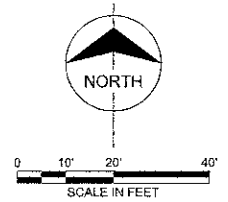
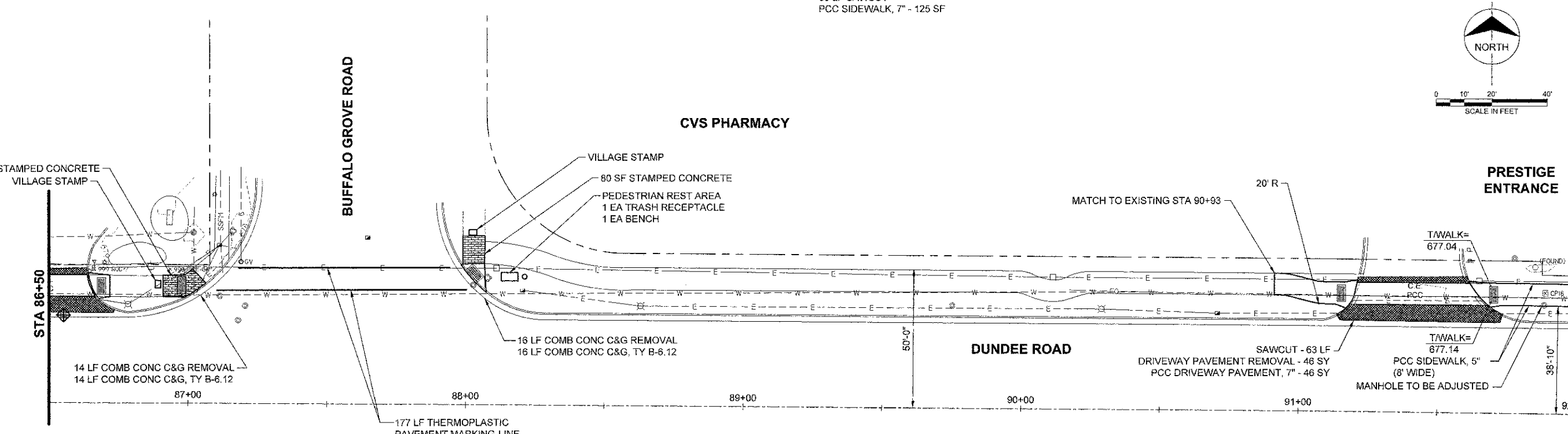
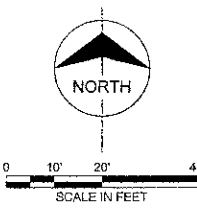
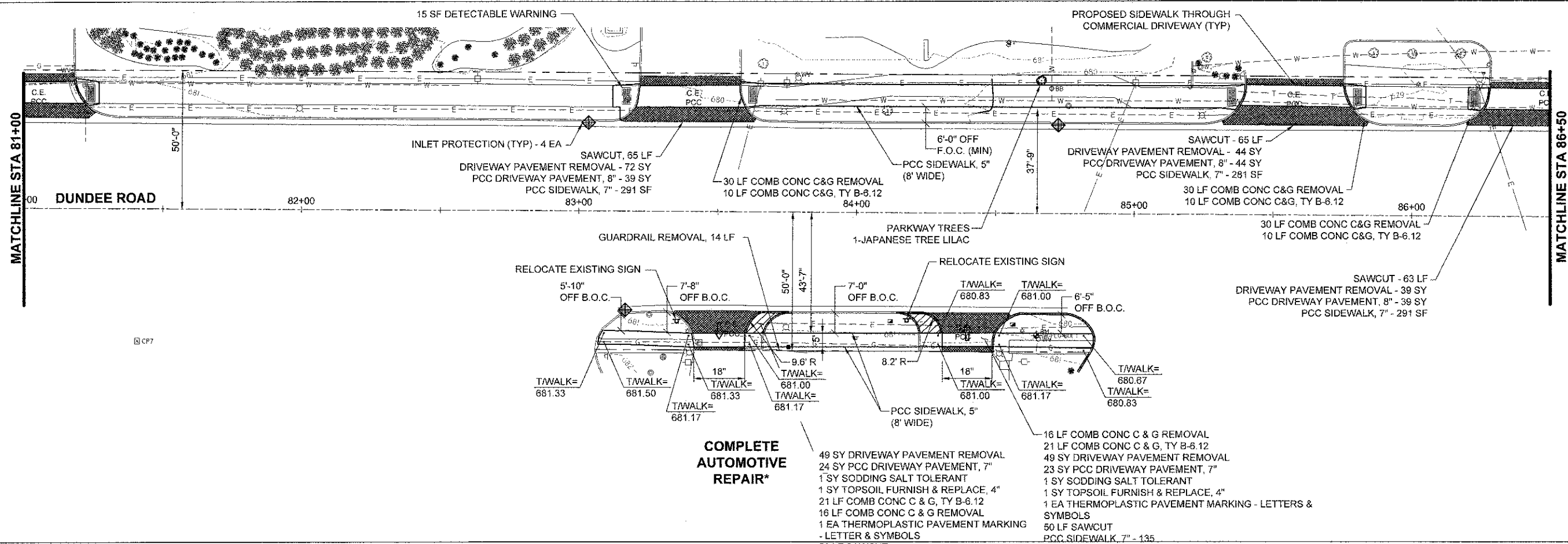
DESIGNED	TMC	REVISION	7-26-2012
DRAWN	TMC	REVISION	
CHECKED	AJB	REVISION	
DATE	8-16-2010	REVISION	

STATE OF ILLINOIS
 DEPARTMENT OF TRANSPORTATION

SCALE:	F.A.U. R.T.E. 1273	SECTION 02-00095-00-SW	COUNTY COOK	TOTAL SHEETS 17	SHEET NO. 3
CONTRACT NO. 63614			FED. ROAD DIST. NO. 1 ILLINOIS FED. AID PROJECT		

DATE	BY
APPROVED	DATE
PROJECT BOOK	NO.
NO.	NO.

DATE	BY
APPROVED	DATE
PROJECT BOOK	NO.
NO.	NO.



- NOTES:**
- UTILIZE EQUAL QUANTITIES OF THE FOLLOWING FOR DAY LILIES:
 HEMEROCALLIS HAPPY RETURNS (HAPPY RETURNS DAYLILY), 1-GALLON CONTAINER
 HEMEROCALLIS CHICAGO APACHE (CHICAGO APACHE DAYLILY), 1 GALLON CONTAINER
 HEMEROCALLIS ROSY RETURNS (ROSY RETURNS DAYLILY), 1-GALLON CONTAINER
 - THE GENERAL CONTRACTOR IS REQUIRED TO HIRE AN ENVIRONMENTAL FIRM WITH AT LEAST FIVE (5) DOCUMENTED LEAKING UNDERGROUND STORAGE TANK CLEANUPS OR THAT IS PRE-QUALIFIED IN HAZARDOUS WASTE BY THE DEPARTMENT TO REMEDIATE THE SOIL CONTAMINATION AND MONITOR FOR WORKERS PROTECTION.

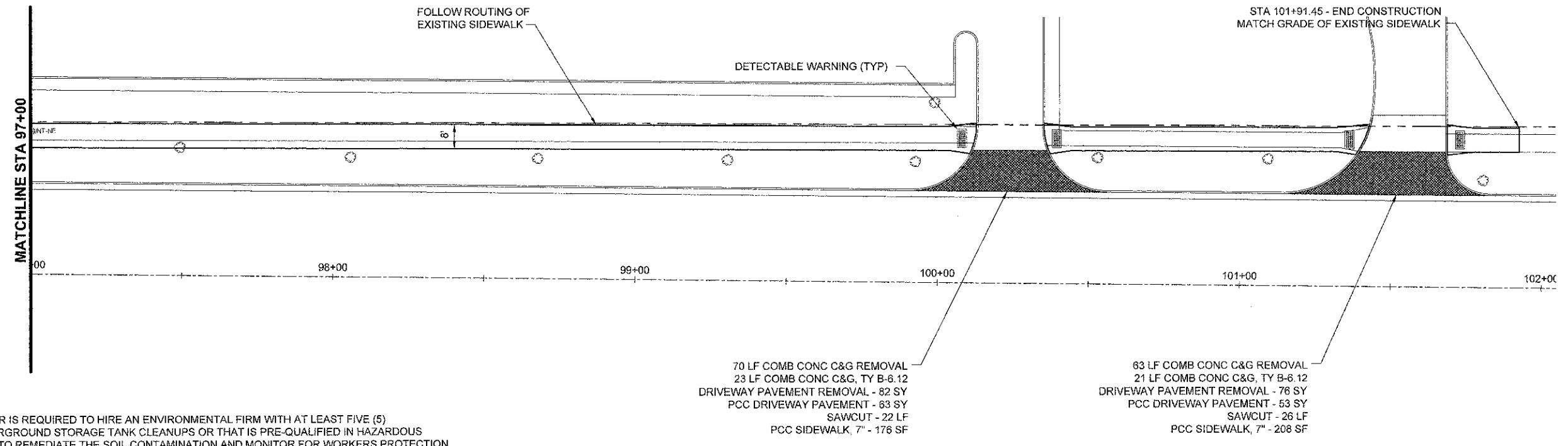
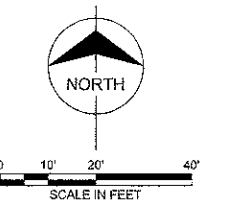
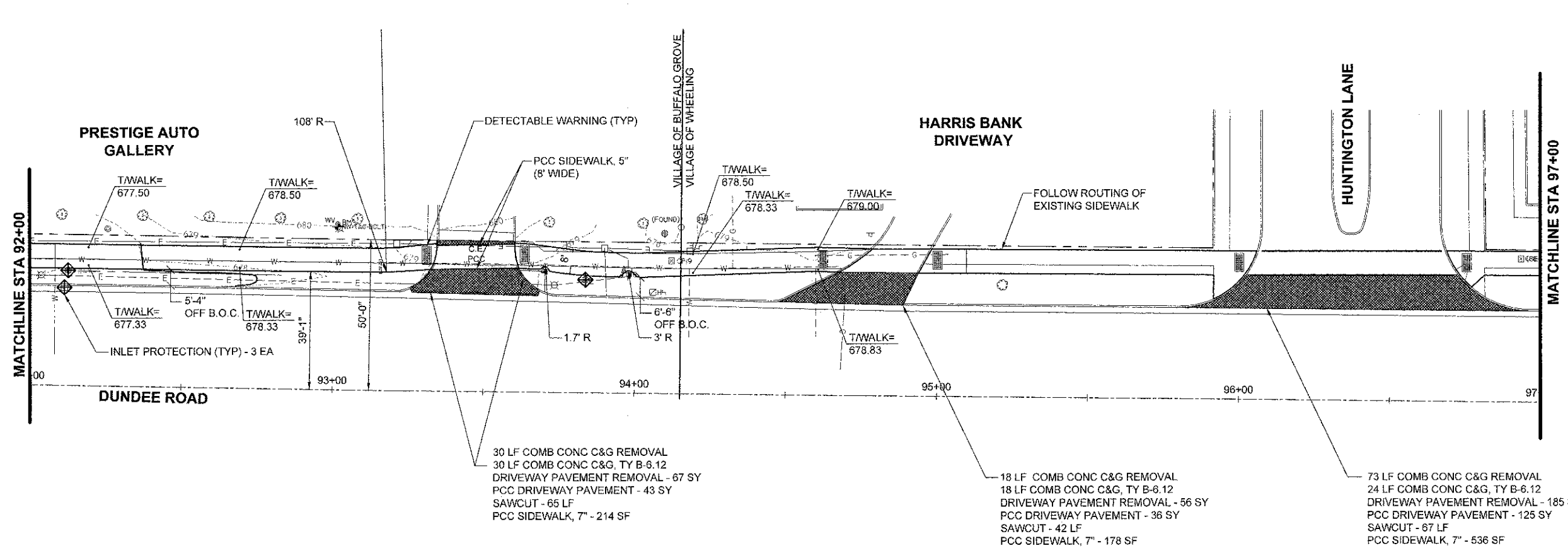
QUANTITIES

165 SF DETECTABLE WARNING
2398 SF SIDEWALK REMOVAL
2358 SF PCC SIDEWALK, 5"
1481 SF PCC SIDEWALK, 7"

FILE NAME: J:\Suffate Grove\54953 - Dundee Road	USER NAME: G. CHAVLZ	DESIGNED: TMC	REVISED: 7-26-2012	STATE OF ILLINOIS DEPARTMENT OF TRANSPORTATION	PLAN SHEET C005 STA 81+00 TO 92+00		EAU RTE. 1273	SECTION 08-00095-00-SW	COUNTY COOK	TOTAL SHEETS 17	SHEET NO. 9	CONTRACT NO. 63614	
PROJECT SOURCE: N/A	CHECKED: AJB	DATE: 6-16-2010	REVISED: -		SCALE: 1"=20'	SHEET NO. 5 OF 6 SHEETS	STA. 83+07	TO STA. 92+00	REQ. ROAD DIST. NO. 1 ILLINOIS PER. AID PROJECT				
PLT DATE: 10/06/2010	DATE: 6-16-2010	REVISED: -	REVISED: -										

PLAN	DATE
DESIGNED	
CHECKED	
DATE	
PROJECT	
NO.	
STRUCTURE	
NOTATION	
CHG	

PROJECT	DATE
DESIGNED	
CHECKED	
DATE	
PROJECT	
NO.	
STRUCTURE	
NOTATION	
CHG	



NOTES:
 1. THE GENERAL CONTRACTOR IS REQUIRED TO HIRE AN ENVIRONMENTAL FIRM WITH AT LEAST FIVE (5) DOCUMENTED LEAKING UNDERGROUND STORAGE TANK CLEANUPS OR THAT IS PRE-QUALIFIED IN HAZARDOUS WASTE BY THE DEPARTMENT TO REMEDIATE THE SOIL CONTAMINATION AND MONITOR FOR WORKERS PROTECTION.

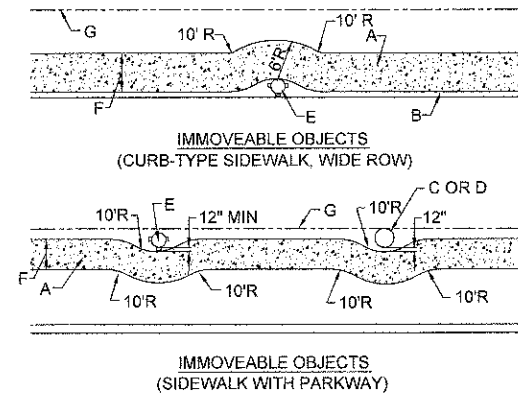
QUANTITIES FOR BUFFALO GROVE
 30 SF DETECTABLE WARNING
 971 SF SIDEWALK REMOVAL
 1508 SF PCC SIDEWALK, 5"
 214 SF PCC SIDEWALK, 7"

QUANTITIES FOR WHEELING
 120 SF DETECTABLE WARNING
 3272 SF SIDEWALK REMOVAL
 5236 SF PCC SIDEWALK, 5"
 1347 SF PCC SIDEWALK, 7"

PROJECT NAME = Village of Buffalo Grove 154383 - Dundee Road Streetscape and Misc. Grant Application NCDAC/PL104360/085	USER NAME = D. CHYZEK	DESIGNED - TMC	REVISED - 7-26-2012	STATE OF ILLINOIS DEPARTMENT OF TRANSPORTATION	PLAN SHEET C006 STA 92+00 TO 101+91.45		F.A.U. RITE: 1273	SECTION: 08-00095-00-SW	COUNTY: COOK	TOTAL SHEETS: 17	SHEET NO.: 10	
PROJECT SCALE = N/A	PROJECT DATE = 10/05/2010	DRAWN - TMC	REVISIONS -		SCALE: 1"=20'	SHEET NO. 6 OF 6 SHEETS	STA. 92+00	TO STA. 94+72	CONTRACT NO. 63614			
CHECKED - A.J.B.	DATE - 8-16-2010	REVISIONS -	REVISIONS -		FED. ROAD DIST. NO. 1 ILLINOIS STATE AID PROJECT							

DATE	
BY	
DESIGNED	
CHECKED	
IN CHARGE	
PROJECT NO.	
SHEET NO.	
TITLE	

DATE	
BY	
DESIGNED	
CHECKED	
IN CHARGE	
PROJECT NO.	
SHEET NO.	
TITLE	



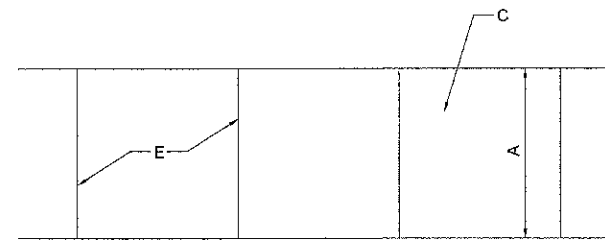
SIDEWALK OBSTRUCTIONS
NOT TO SCALE

CONSTRUCTION NOTE:

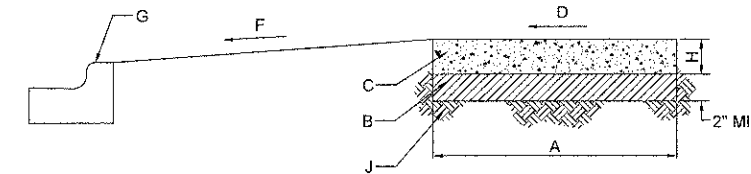
- A. SIDEWALK
- B. CURB
- C. SERVICE POLE, SEE NOTES 1 AND 2.
- D. TREE TRUNK, SEE NOTE 1
- E. FIRE HYDRANT, SEE NOTES 1 AND 2.
- F. SIDEWALK WIDTH.
- G. RIGHT-OF-WAY (ROW)

GENERAL NOTES:

1. A FIRE HYDRANT, SERVICE POLE OR TREE TRUNK SHALL BE CONSIDERED IMMOVABLE ONLY WHEN DIRECTED BY THE VILLAGE ENGINEER.
2. WHEN A SERVICE POLE OR FIRE HYDRANT IS LOCATED WITHIN THE SIDEWALK AREA, AND IS CONSIDERED IMMOVABLE, A 1/2" EXPANSION JOINT SHALL BE INSTALLED ENCIRCLING THE OBJECT. THIS WORK SHALL BE INCIDENTAL TO THE SIDEWALK COST.



PLAN



PROFILE SIDEWALK DETAIL

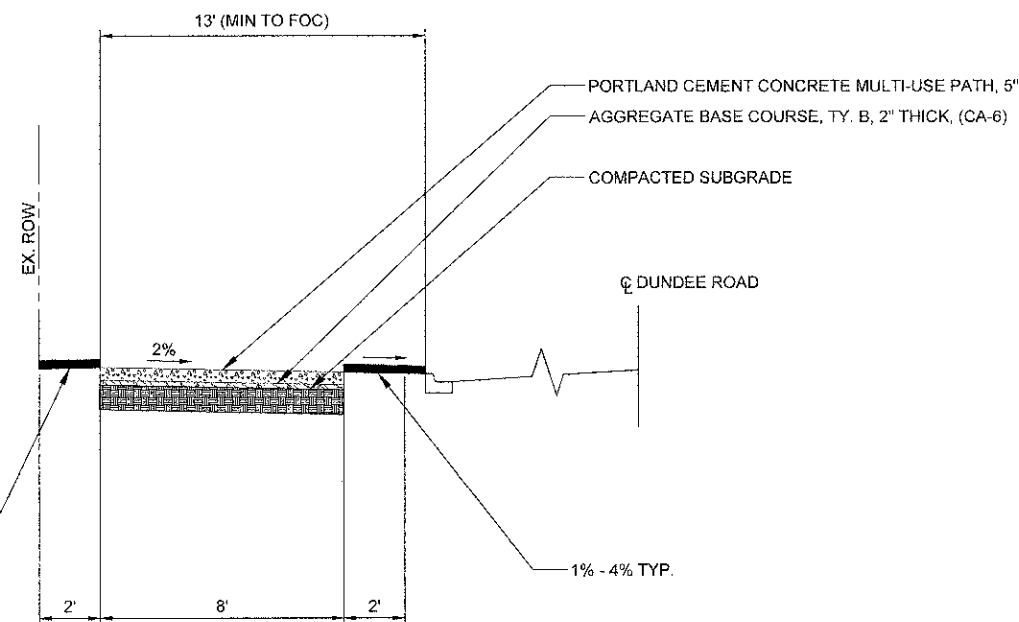
CONSTRUCTION NOTES

- A. 5' NORMAL WIDTH OR AS INDICATED ON PLANS
- B. AGGREGATE BASE COURSE, TY. B, 2" THICK, (CA-6)
- C. P.C.C. SIDEWALK
- D. MAXIMUM SLOPE OF 2% TO STREET SIDE, OR AS NOTED ON PLAN
- E. JOINTS, SEE NOTES 3 AND 4
- F. SLOPE 2% TO 8% TOWARDS STREET FOR HIGH-VOLUME COMMERCIAL/INDUSTRIAL
- G. CURB AND GUTTER
- H. CONCRETE THICKNESS, SEE NOTE 1
- J. COMPACTED SUBGRADE TO 95% OF THE STANDARD LABORATORY DENSITY

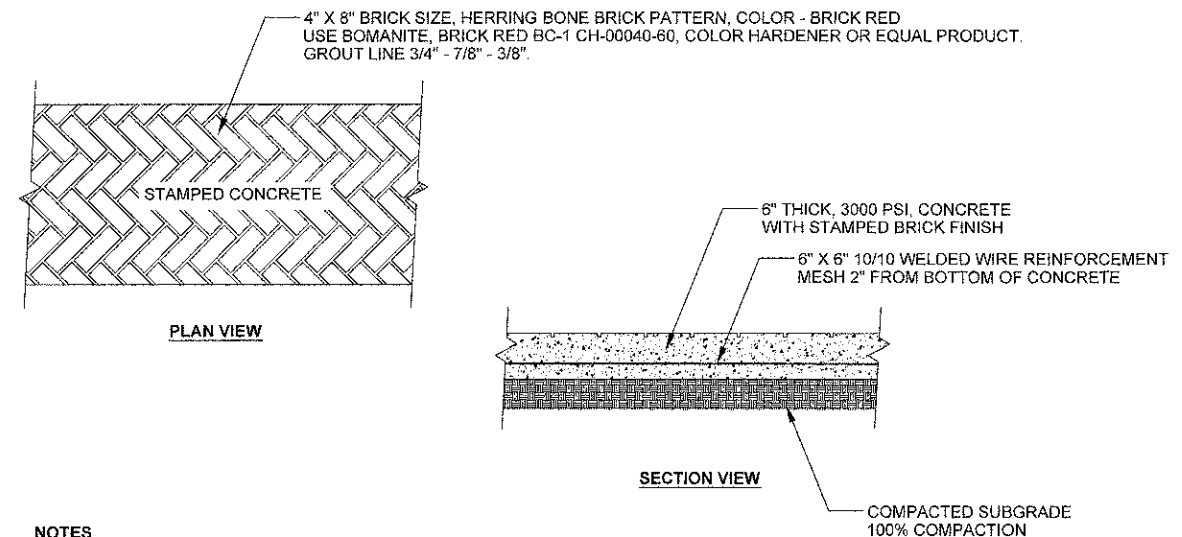
GENERAL NOTES

1. STANDARD THICKNESS OF PCC SIDEWALK SHALL BE A MINIMUM OF 5". THICKNESS SHALL BE 7" ACROSS DRIVEWAY ENTRANCE.
2. WHERE WOODEN FORMS ARE USED, 2x4's ARE NOT ALLOWED. ONLY 2x6's SHALL BE USED.
3. PREFORMED 3/4" EXPANSION JOINTS SHALL BE CONSTRUCTED AT MAX. SPACING OF 40'.
4. FORMED OR SAW-CUT CONTRACTION JOINTS SHALL BE SPACED GENERALLY 5' APART, BUT NO LESS THAN 4' AND NO MORE THAN 6'.
5. 1/2" FOAM EXPANSION JOINTS SHALL BE INSTALLED WHERE SIDEWALK ABUTS BUILDINGS, TRAFFIC SIGNAL FOUNDATIONS, SERVICE POLES, AND OTHER IMMOVABLE STRUCTURES.
6. CONCRETE TO BE MINIMUM 6-BAG MIX.

P.C.C. SIDEWALK 5" & 7"
NOT TO SCALE



TYPICAL CROSS SECTION FOR TWO-WAY MULTI-USE PATH
STA 3+2.11 TO STA 15+00

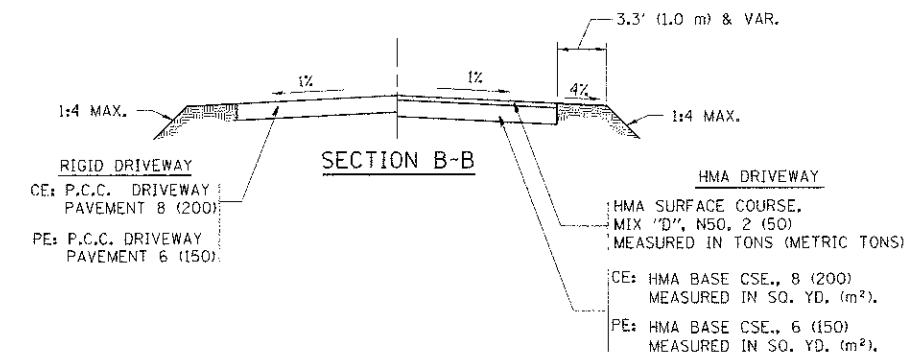
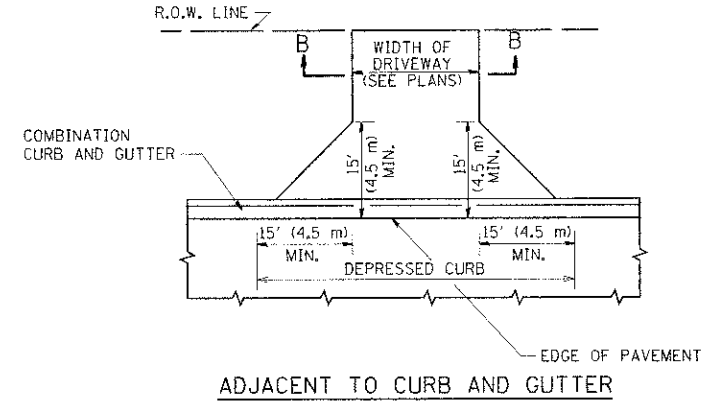
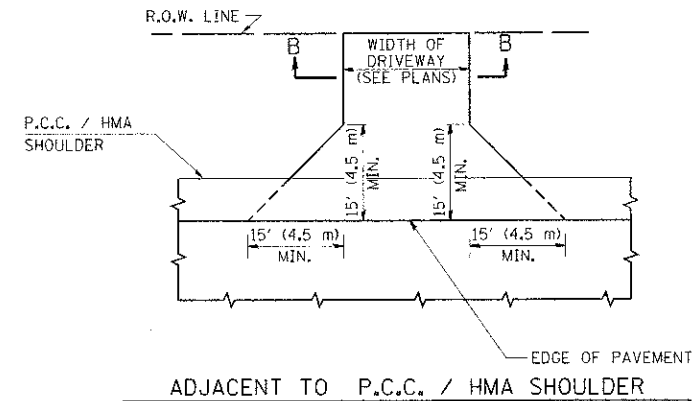
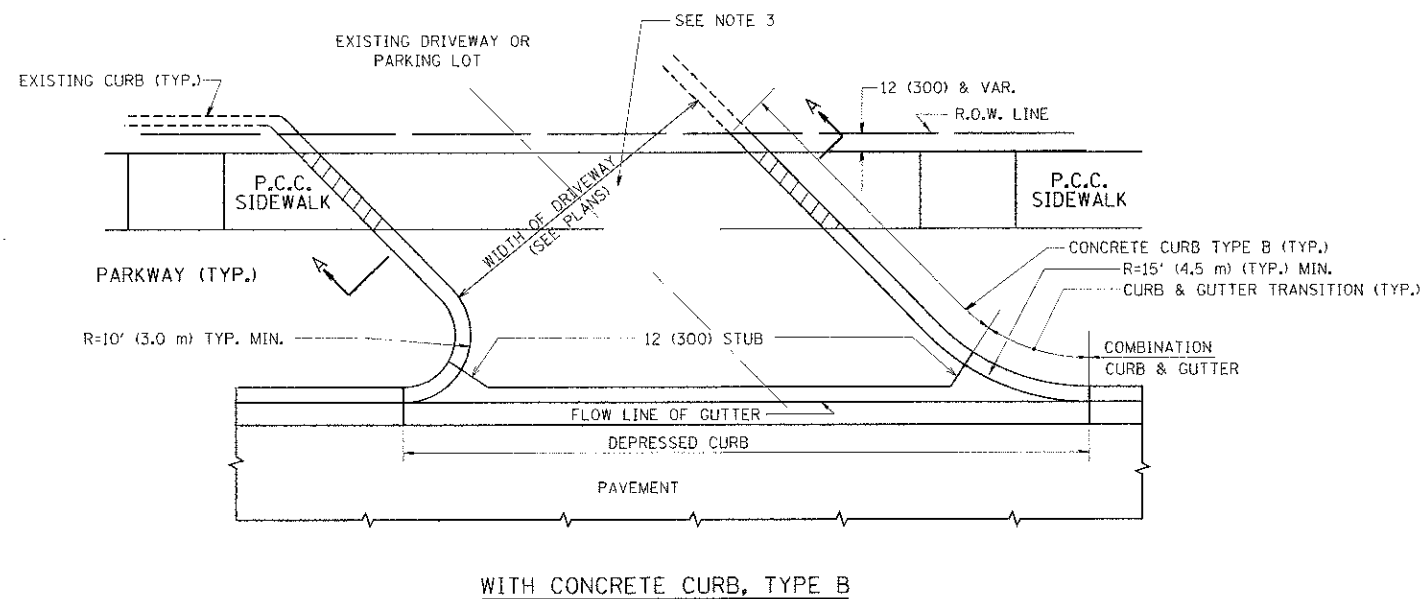
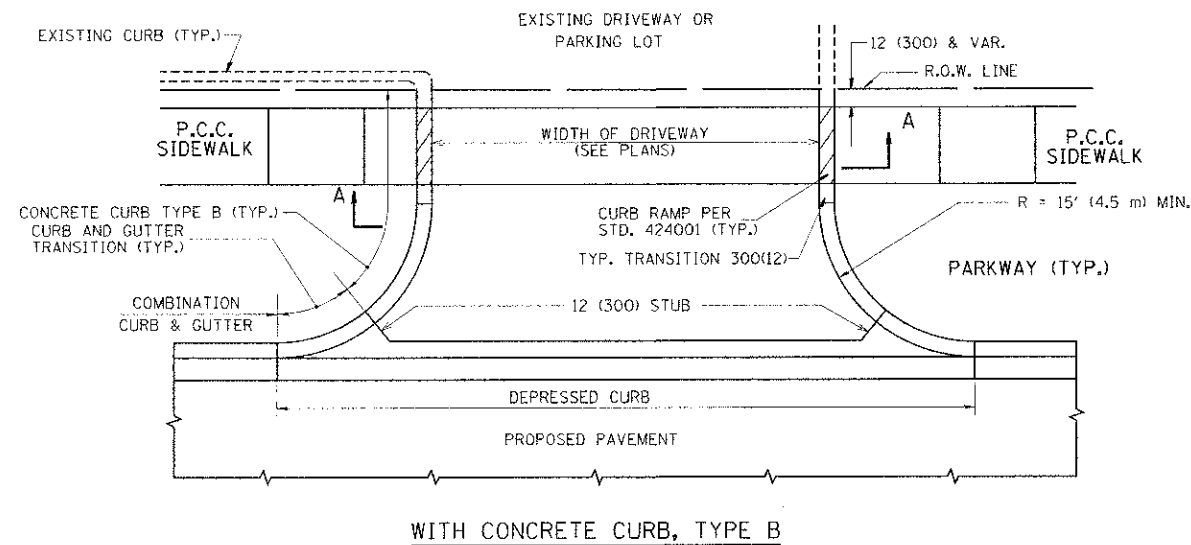


NOTES

1. PROVIDE CONTROL JOINTS SPACED EVERY 10 FEET ON CENTER.
2. PROVIDE EXPANSION JOINTS AT ALL RIGID OBJECTS

STANDARD STAMPED COLORED CONCRETE
NO TO SCALE

FILE NAME =	USER NAME = D. GRWECZ	DESIGNED - TMC	REVISED - 10/26/2010	STATE OF ILLINOIS DEPARTMENT OF TRANSPORTATION	DETAIL SHEET 1 OF 1	FLA.U	SECTION	COUNTY	TOTAL SHEETS	
\\Buffalo Grove\54363 - Dundee Road		DRAWN - TMC	REVISED -			1273	08-00095-CO-SW	COOK	17	11
Application\CAD\CIVIL\54363\DR21		CHECKED - AJS	REVISED			CONTRACT NO. 63614				
PLOT SCALE = N/A		DATE - 8-16-2010	REVISED			SCALE: N/A	SHEET NO. 1 OF 1 SHEETS	STA.	TO STA.	FED. ROAD DIST. NO. 1 (R) (ING) (P) (E) (D) (A) (D) (P) (R) (O) (J) (E) (C) (T)



GENERAL NOTES:

DRIVEWAY SLOPES, LOCATIONS, & GEOMETRIC LAYOUT SHALL BE IN ACCORDANCE WITH THE LATEST EDITION OF THE "HANDBOOK FOR POLICY ON PERMITS FOR ACCESS DRIVEWAYS TO STATE HIGHWAYS". FOR FURTHER LAYOUT REQUIREMENTS, REFER TO ILLUSTRATIONS IN THE PERMIT HANDBOOK. DRIVEWAYS SHALL BE REPLACED IN KIND, UNLESS OTHERWISE NOTED ON THE PLANS.

COMMERCIAL DRIVEWAYS SHALL BE CONSTRUCTED WITH CONCRETE CURB, TYPE B RETURNS EXCEPT WHEN THE SIDEWALK EDGE IS 4 FEET (1.2 METERS) OR LESS FROM THE BACK OF CURB, CONSTRUCT A FLARE DRIVEWAY WITHOUT CURB.

THE RESIDENT ENGINEER SHALL CONTACT THE TRAFFIC PERMIT OFFICE AT 847/ 705-4131 FOR ANY QUESTIONS ON DRIVEWAYS SHOWN IN THE PLANS; SPECIFICALLY IN REFERENCE TO ADDITIONAL AND/OR RELOCATION/REMOVAL OF A DRIVEWAY.

COMBINATION CONCRETE CURB & GUTTER SHALL BE MEASURED STRAIGHT ACROSS THE DRIVEWAY. NO ADDITIONAL COMPENSATION WILL BE ALLOWED FOR THE CURB & GUTTER TRANSITION.

1 (25) PREFORMED EXPANSION JOINT FILLER WILL NOT BE PAID SEPARATELY, BUT SHALL BE CONSIDERED INCLUDED IN THE COST OF THE P.C.C. DRIVEWAY PAVEMENT OR P.C.C. SIDEWALK.

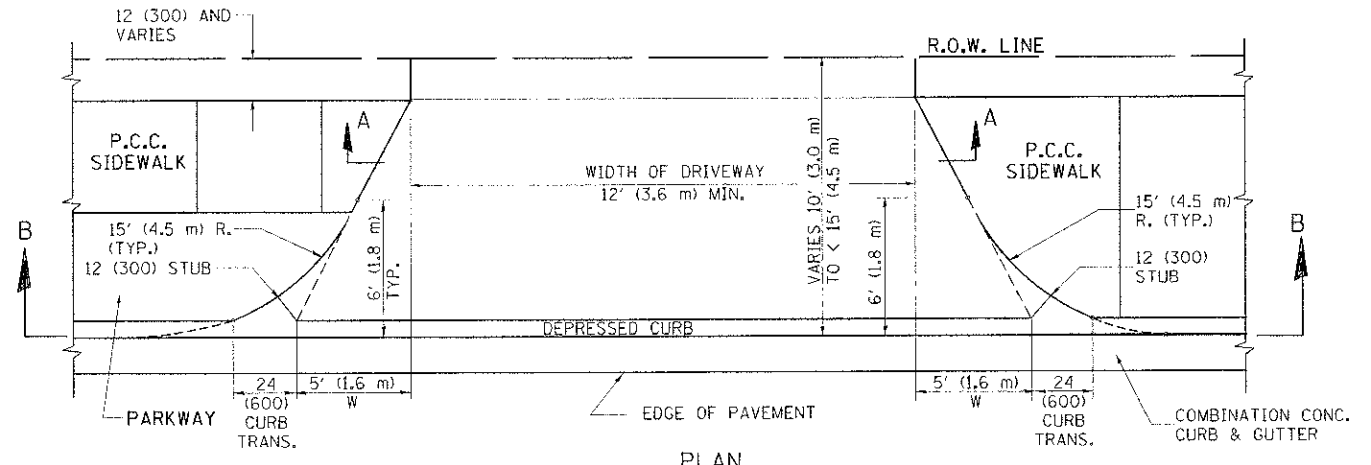
WHEN THE P.C.C. SIDEWALK EXTENDS THROUGH THE DRIVEWAY, THE THICKNESS OF THE SIDEWALK IN THE DRIVEWAY AREA SHALL BE THE SAME AS THE DRIVEWAY THICKNESS. SIDEWALK WILL BE PAID FOR AS P.C.C. SIDEWALK OF THE THICKNESS SPECIFIED. SIDEWALK CROSS SLOPE THRU DRIVEWAY AREA TO BE A MAXIMUM OF 1:50.

RURAL FIELD ENTRANCE (FE)
HMA SURFACE COURSE,
MIX "D", N50, 2 (50)
MEASURED IN TONS (METRIC TONS)

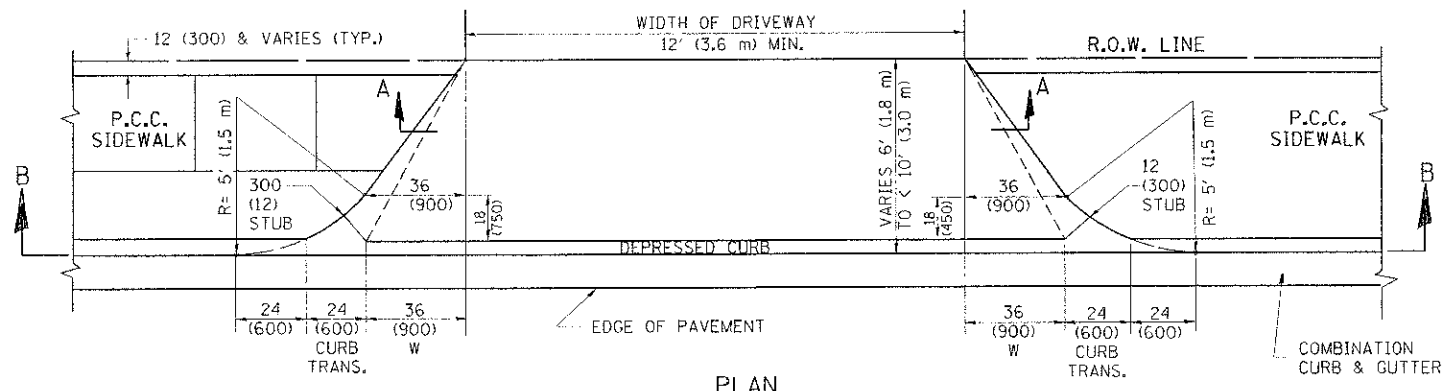
CE: HMA BASE CSE., 8 (200)
MEASURED IN SQ. YD. (m²).
PE: HMA BASE CSE., 6 (150)
MEASURED IN SQ. YD. (m²).

AGGREGATE BASE CSE., TYPE B, 8 (200)
MEASURED IN SQ. YD. (m²).

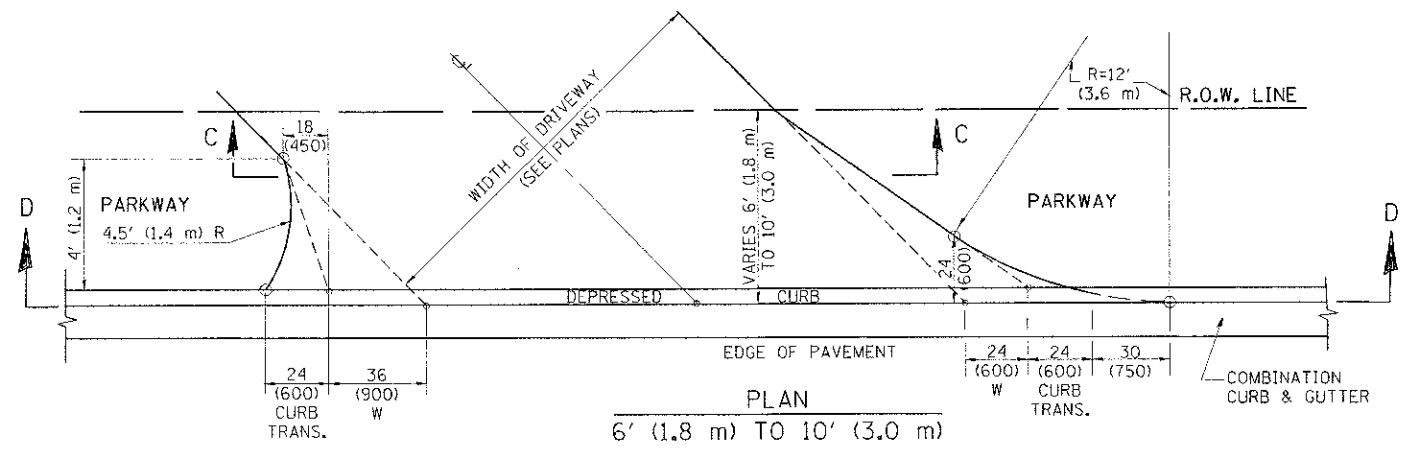
FILE NAME =	USER NAME = lshah	DESIGNED - R. SHAH	REVISED - P. LoFLUER 04-15-03	STATE OF ILLINOIS DEPARTMENT OF TRANSPORTATION	DRIVEWAY DETAILS - DISTANCE BETWEEN R.O.W. AND FACE OF CURB & EDGE OF SHOULDER >= 15' (4.5 m)	F.A. RTE.	SECTION	COUNTY	TOTAL SHEETS	SHEET NO.
PLT SCALE = 50,000 / 1" =	CHECKED -	REVISOR - R. BORO 01-01-07	343			08-00095-00-SW	COOK	17	12	
PLT DATE = 9/5/2010	DATE - 11-04-95	REVISOR - R. BORO 06-11-08	BD0156-07 (BD-01)			CONTRACT NO.				
					SCALE: NONE	SHEET NO. 1 OF 1 SHEETS		STA.	TO STA.	
					FED. ROAD DIST. NO. 1 ILLINOIS FED. AID PROJECT					



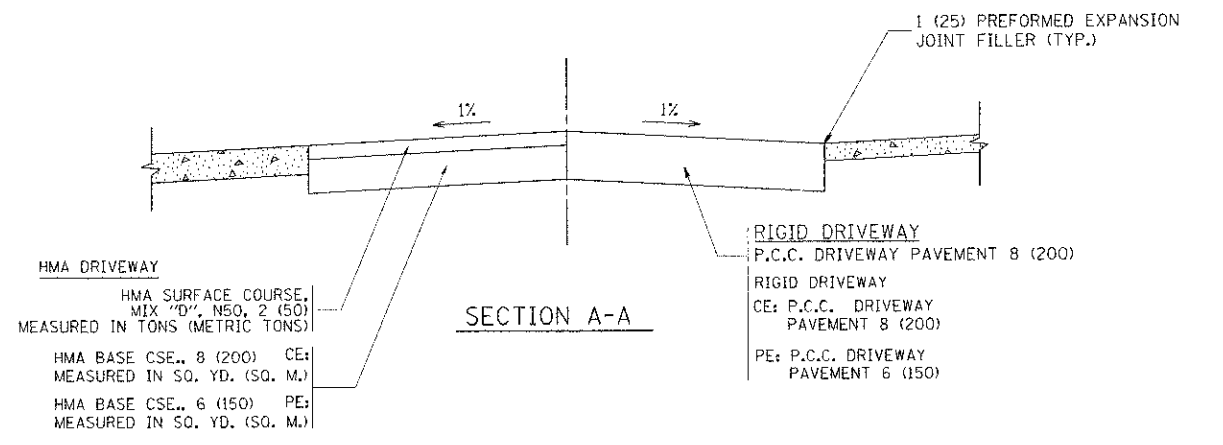
PLAN
10' (3.0 m) TO < 15' (4.5 m)



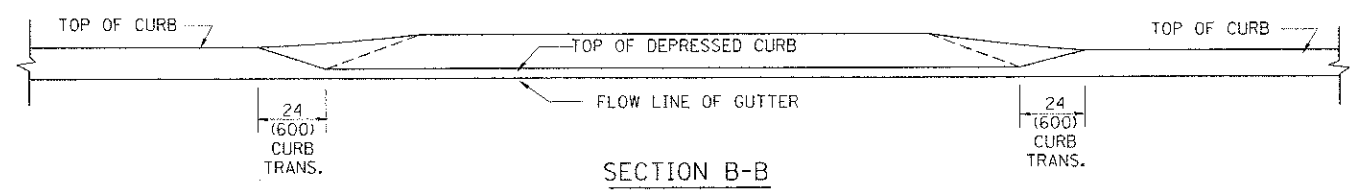
PLAN
6' (1.8 m) TO < 10' (3.0 m)



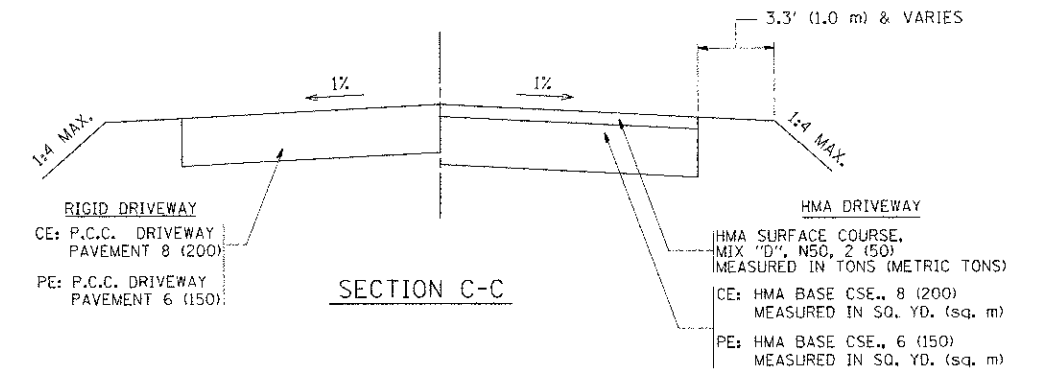
PLAN
6' (1.8 m) TO 10' (3.0 m)



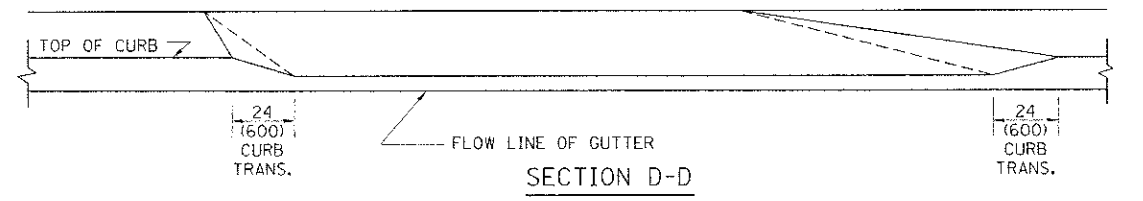
SECTION A-A
HMA DRIVEWAY
HMA SURFACE COURSE, MIX "D", N50, 2 (50) MEASURED IN TONS (METRIC TONS)
HMA BASE CSE., 8 (200) MEASURED IN SQ. YD. (SQ. M.)
HMA BASE CSE., 6 (150) MEASURED IN SQ. YD. (SQ. M.)
RIGID DRIVEWAY
P.C.C. DRIVEWAY PAVEMENT 8 (200)
RIGID DRIVEWAY
CE: P.C.C. DRIVEWAY PAVEMENT 8 (200)
PE: P.C.C. DRIVEWAY PAVEMENT 6 (150)



SECTION B-B



SECTION C-C



SECTION D-D

GENERAL NOTES

DRIVEWAY SLOPES, LOCATIONS, & GEOMETRIC LAYOUT SHALL BE IN ACCORDANCE WITH THE LATEST EDITION OF THE "HANDBOOK FOR POLICY ON PERMITS FOR ACCESS DRIVEWAYS TO STATE HIGHWAYS". FOR FURTHER LAYOUT REQUIREMENTS, REFER TO ILLUSTRATION 10 IN THE PERMIT HANDBOOK. WHERE SIDEWALKS EXIST, DRIVEWAYS SHALL BE REPLACED WITH RIGID PAVEMENT. WHERE NO SIDEWALKS EXIST, DRIVEWAYS SHALL BE REPLACED IN KIND. SIDEWALK CROSS SLOPE THRU DRIVEWAY AREA TO BE A MAXIMUM OF 1:50.

WHEN THE DISTANCE BETWEEN R.O.W. AND THE BACK OF CURB IS EQUAL TO OR LESS THAN 8' (2.4 m), THE P.C.C. SIDEWALK SHALL EXTEND TO THE BACK OF CURB.

THE RESIDENT ENGINEER SHALL CONTACT THE TRAFFIC PERMIT OFFICE AT 847/ 705-4131 FOR ANY QUESTIONS ON DRIVEWAYS SHOWN IN THE PLANS; SPECIFICALLY IN REFERENCE TO ADDITIONAL AND/OR RELOCATION/REMOVAL OF A DRIVEWAY.

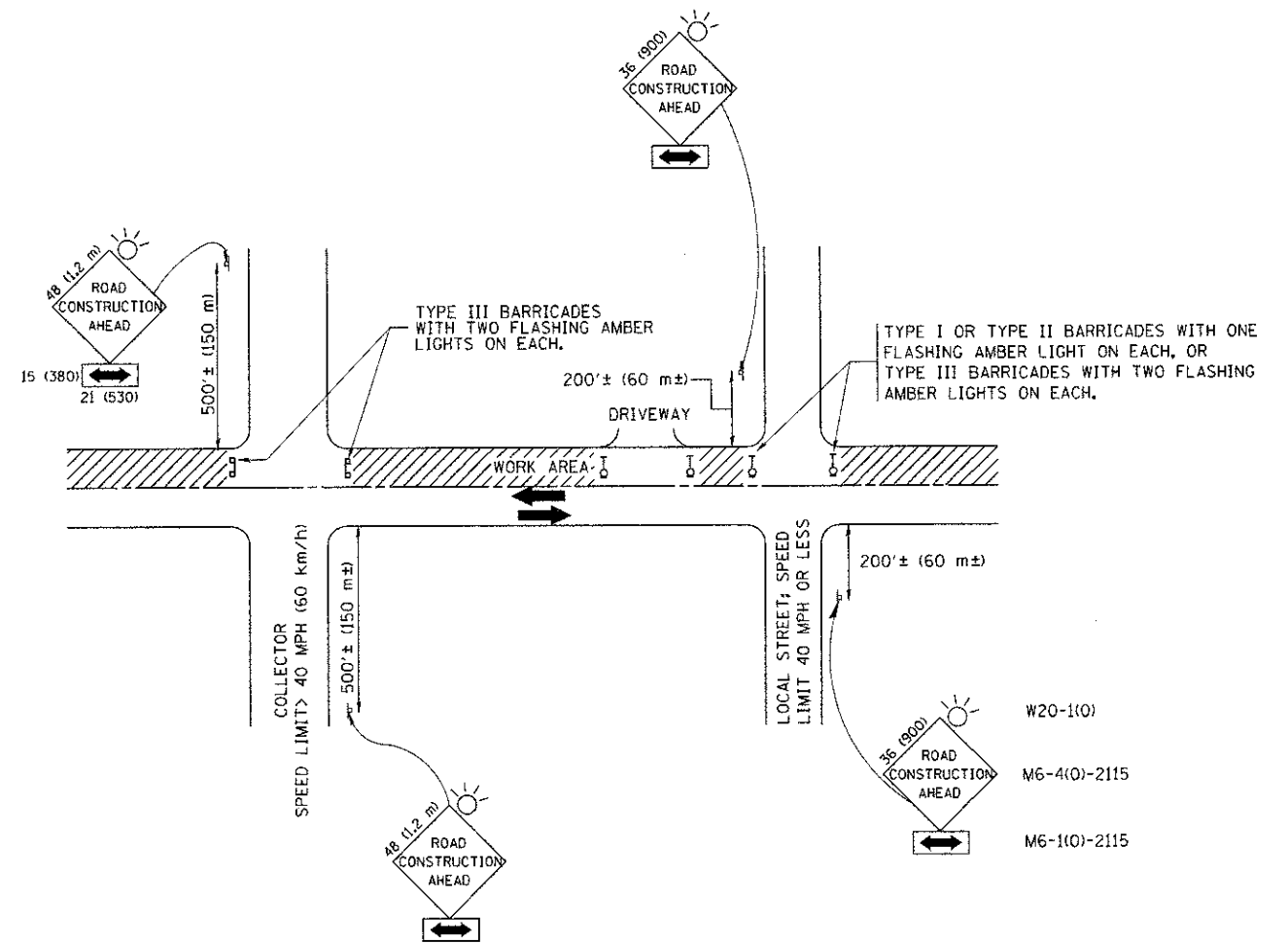
COMBINATION CONCRETE CURB & GUTTER SHALL BE MEASURED STRAIGHT ACROSS THE DRIVEWAY. NO ADDITIONAL COMPENSATION WILL BE ALLOWED FOR THE CURB & GUTTER TRANSITION.

THE 1 (25) PREFORMED EXPANSION JOINT FILLER WILL NOT BE PAID SEPARATELY, BUT SHALL BE CONSIDERED INCLUDED IN THE COST OF THE P.C.C. DRIVEWAY PAVEMENT OR P.C.C. SIDEWALK.

"W" VARIES FROM 36 (900) TO 5' (1.5 m) PROPORTIONAL TO THE LENGTH (L), FROM 6' (1.8 m) TO 10' (3 m).

ALL DIMENSIONS ARE IN INCHES (MILLIMETERS) UNLESS OTHERWISE NOTED.

FILE NAME: c:\work\bd400\bd400\198315\bd402.dwg	USER NAME: louse	DESIGNED: R. SHAH	REVISED: M. GOMEZ 04-06-01	STATE OF ILLINOIS DEPARTMENT OF TRANSPORTATION	DRIVEWAY DETAILS DISTANCE BETWEEN ROW AND FACE OF CURB < 15' (4.5 m)	F.A. RTE.:	SECTION:	COUNTY:	TOTAL SHEETS:	SHEET NO.:	
	PLOT SCALE: 50.0000 1/8"	DRAWN:	REVISED: P. LOFLEUR 04-15-03			343	08-00095-00-SW	COOK	17	13	
	PLOT DATE: 10/28/2011	CHECKED:	REVISED: R. BORO 01-01-07			BD400-02 (BD-02)		CONTRACT NO.			
		DATE: 11-06-95	REVISED: R. BORO 09-06-11			SCALE: NONE		SHEET NO. 1 OF 1 SHEETS		STA. TO STA.	
						FED. ROAD DIST. NO. 1		ILLINOIS FED. AID PROJECT			



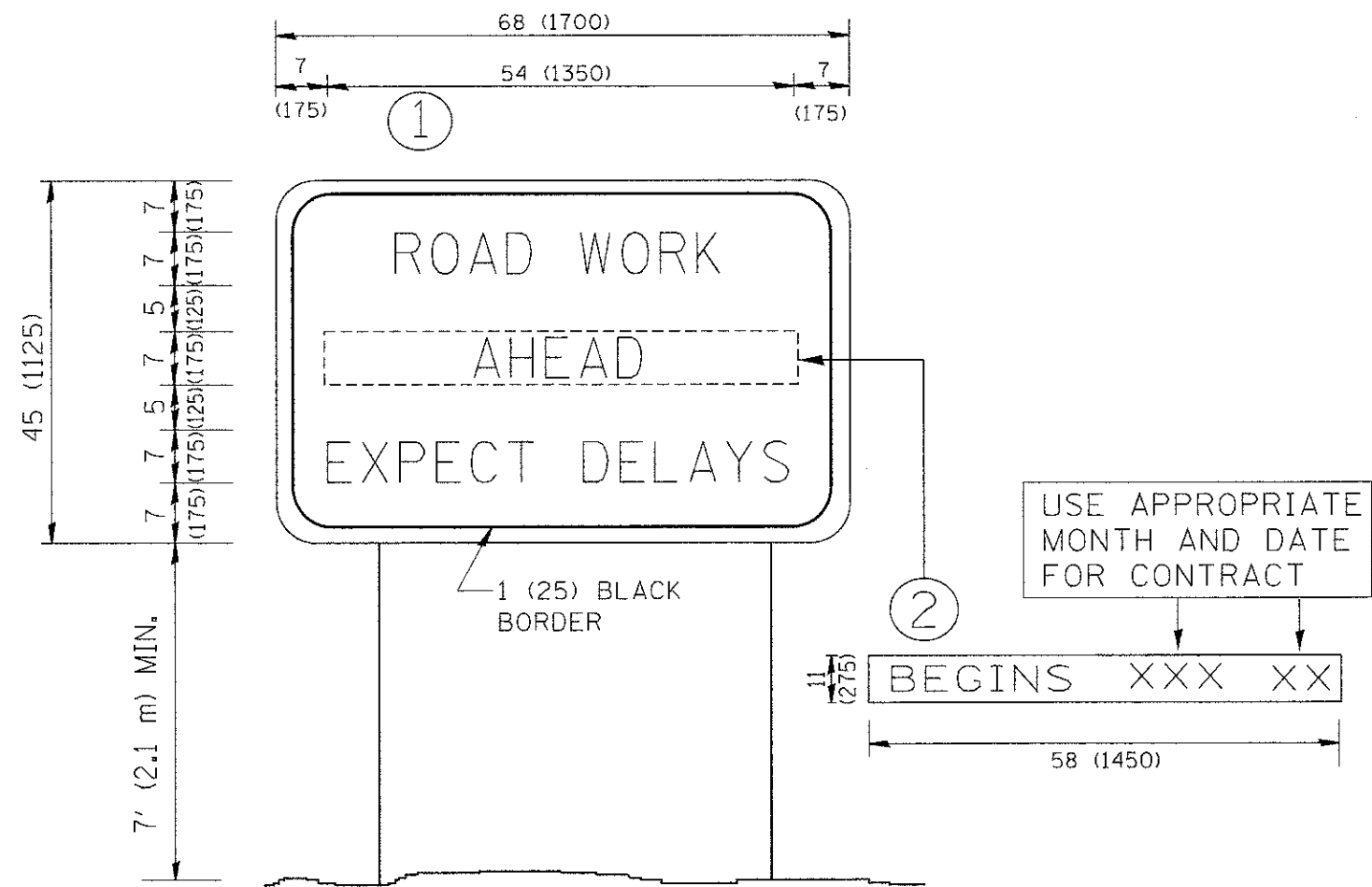
TRAFFIC CONTROL AND PROTECTION FOR SIDE ROADS, INTERSECTIONS, AND DRIVEWAYS

NOTES:

- A. FOR NO LANE RESTRICTION ON THE SIDE ROAD OR DRIVEWAYS
- SIDE ROAD WITH A SPEED LIMIT OF 40 MPH (60 km/h) OR LESS AS SHOWN ON THE DRAWING AND AS DIRECTED BY THE ENGINEER:
 - ONE ROAD CONSTRUCTION AHEAD SIGN 36 x 36 (900x900) WITH A FLASHER AND FLAG MOUNTED ON IT APPROXIMATELY 200' (60 m) IN ADVANCE OF THE MAIN ROUTE.
 - THE CLOSED PORTION OF THE MAIN ROUTE SHALL BE PROTECTED BY BLOCKING WITH TYPE I, TYPE II OR TYPE III BARRICADES, 1/3 OF THE CROSS SECTION OF THE CLOSED PORTION.
 - SIDE ROAD WITH A SPEED LIMIT GREATER THAN 40 MPH (60 km/h) AS SHOWN ON THE DRAWING AND AS DIRECTED BY THE ENGINEER:
 - ONE ROAD CONSTRUCTION AHEAD SIGN 48 x 48 (1.2 m x 1.2 m) WITH A FLASHER MOUNTED ON IT APPROXIMATELY 500' (150 m) IN ADVANCE OF THE MAIN ROUTE.
 - THE CLOSED PORTION OF THE MAIN ROUTE SHALL BE PROTECTED BY BLOCKING WITH TYPE III BARRICADES, 1/2 OF THE CROSS SECTION OF THE CLOSED PORTION.
 - WHEN THE SIDE ROAD LIES BETWEEN THE BEGINNING OF THE MAINLINE SIGNING AND THE WORK ZONE, A SINGLE HEADED ARROW (M6-1) SHALL BE USED IN LIEU OF THE DOUBLE HEADED ARROW (M6-4).
- B. FOR A LANE CLOSURE ON A SIDE ROAD OR DRIVEWAY:
- USE APPLICABLE PORTIONS OF THE TYPICAL APPLICATION OF TRAFFIC CONTROL DEVICES (STD. 701501, STD. 701606 OR THE APPROPRIATE STANDARD). THE SPACING OF SIGNS AND BARRICADES SHALL BE ADJUSTED FOR FIELD CONDITIONS AS DIRECTED BY THE ENGINEER. THE DIRECTIONAL ARROW SHALL BE COVERED OR REMOVED WHEN NO LONGER CONSISTENT WITH THE SIDE ROAD LANE CLOSURE.
- C. ADVANCE WARNING SIGNS ARE TO BE OMITTED ON DRIVEWAY UNLESS OTHERWISE NOTED.
- D. THE TRAFFIC CONTROL AND PROTECTION FOR SIDE ROADS, INTERSECTIONS, AND DRIVEWAYS SHALL BE INCIDENTAL TO THE COST OF SPECIFIED TRAFFIC CONTROL STANDARDS OR ITEMS.

All dimensions are in millimeters (inches) unless otherwise shown.

FILE NAME = W:\distsatd\22x34\td10.dgn	USER NAME = gegl1enobt	DESIGNED - LHA	REVISED - J. OBERLE 10-18-95	STATE OF ILLINOIS DEPARTMENT OF TRANSPORTATION	TRAFFIC CONTROL AND PROTECTION FOR SIDE ROADS, INTERSECTIONS, AND DRIVEWAYS		F.A. RTE. 343	SECTION 08-00095-00-SW	COUNTY COOK	TOTAL SHEETS 17	SHEET NO. 39	
	PLOT SCALE = 50,000 / IN.	CHECKED -	REVISED - A. HOUSEH 03-06-96		SCALE: NONE	SHEET NO. 1 OF 1 SHEETS	STA.	TO STA.	TC-10		CONTRACT NO. 63614	
	PLOT DATE = 1/4/2009	DATE - 06-89	REVISED - A. HOUSEH 10-15-96		FED. ROAD DIST. NO. 1 (ILLINOIS) FED. AID PROJECT							
			REVISED - T. RAMMACHER 01-06-00									



NOTES:

1. USE BLACK LETTERING ON ORANGE BACKGROUND.
2. ERECT SIGNS IN ADVANCE OF THE LOCATION FOR THE "ROAD CONSTRUCTION AHEAD" SIGN AT LOCATIONS AS DIRECTED BY THE ENGINEER.
3. ERECT SIGN ① WITH INSTALLED PANEL ② ONE WEEK PRIOR TO THE START OF CONSTRUCTION.
4. REMOVE PANEL ② SOON AFTER THE START OF CONSTRUCTION.
5. SEE SPECIAL PROVISION FOR "TEMPORARY INFORMATION SIGNING" FOR ADDITIONAL INFORMATION.
6. ONE SIGN ASSEMBLY EQUALS 25.70 SQ. FT. (2.3 SQ. M.)
7. SHALL BE PAID FOR AS TEMPORARY INFORMATION SIGNING.

ALL DIMENSIONS ARE IN INCHES (MILLIMETERS) UNLESS OTHERWISE SHOWN.

FILE NAME = W:\diststd\22x34\to22.dgn	USER NAME = gegltonabt	DESIGNED -	REVISED - R. MIRS 09-15-97	STATE OF ILLINOIS DEPARTMENT OF TRANSPORTATION	ARTERIAL ROAD INFORMATION SIGN			F.A. RTE. 343	SECTION 08-00095-00-SW	COUNTY BOOK	TOTAL SHEETS 17	SHEET NO. 17	
	PLOT SCALE = 50,000 / IN.	DRAWN -	REVISED - R. MIRS 12-11-97		SCALE: NONE			SHEET NO. 1 OF 1 SHEETS		STA. TO STA.		TC-22 FED. ROAD DIST. NO. 1 ILLINOIS FED. AID PROJECT	
	PLOT DATE = 1/4/2008	CHECKED -	REVISED - T. RAMMACHER 02-02-99		CONTRACT NO.								
		DATE -	REVISED - C. JUCIUS 01-31-07										