

F.A.U. RTE.	SECTION	COUNTY	TOTAL SHEETS	SHEET NO.
1322	01-00074-00-CH	COOK	245	1
FED. ROAD DIST. NO. 1	ILLINOIS	CONTRACT NO. 63629		

245 + 1 = 246



LOCATION OF SECTION INDICATED THIS: - [shaded area] -

STATE OF ILLINOIS  
DEPARTMENT OF TRANSPORTATION  
DIVISION OF HIGHWAYS

APPROVED August 15, 2012  
*Steven R. Kwan*  
DIRECTOR OF ENGINEERING AND PUBLIC WORKS

PASSED August 30, 2012  
*C. H. [Signature]*  
DISTRICT ONE ENGINEER OF LOCAL ROADS & STREETS

RELEASING FOR BID  
BASED ON LIMITED  
REVIEW August 28, 2012  
*John Fortmann*  
DEPUTY DIRECTOR OF HIGHWAYS, REGION ONE ENGINEER

**PRINTED BY THE AUTHORITY  
OF THE STATE OF ILLINOIS**

SIGNED *D. N. [Signature]*  
DATE 8/15/12 EXPIRES 11-30-2011  
FOR DRAWINGS 145 TO 175

**CIVILTECH**  
450 E. Devon Ave, Suite 300 - Itasca, Illinois 60143  
Tel: 630.773.3900 - Fax: 630.773.3975  
www.civiltechinc.com

STATE OF ILLINOIS  
DEPARTMENT OF TRANSPORTATION  
DIVISION OF HIGHWAYS  
**PLANS FOR PROPOSED  
FEDERAL AID HIGHWAY**  
FAU ROUTE 1322 (SCHAUMBURG ROAD)  
AT FAP ROUTE 0362 (BARRINGTON ROAD)  
SECTION 01-00074-00-CH  
PROJECT M-CMM-8003(051)  
INTERSECTION IMPROVEMENT,  
TRAFFIC SIGNAL INSTALLATION, AND LIGHTING  
VILLAGE OF SCHAUMBURG  
COOK COUNTY  
C-91-211-01

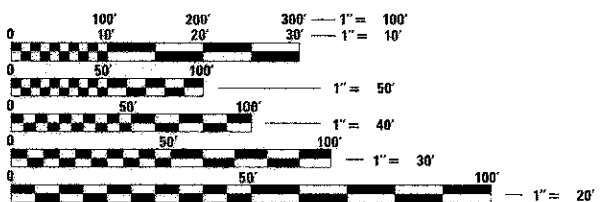
**INDEX OF SHEETS**  
FOR INDEX OF SHEETS, SEE SHEET NO. 2

**DESIGN SPEED:**  
SCHAUMBURG ROAD - 45 MPH  
BARRINGTON ROAD - 45 MPH  
HOLMES WAY - 30 MPH

**POSTED SPEED:**  
SCHAUMBURG ROAD - 40 MPH  
BARRINGTON ROAD - 40 MPH  
HOLMES WAY - 25 MPH

**DESIGN DESIGNATIONS:**  
SCHAUMBURG ROAD - 40,000 (2030) SRA 1.506 (HMA OVERLAY-15)  
BARRINGTON ROAD - 41,000 (2030) SRA 2.771 (HMA OVERLAY-15)  
HOLMES WAY (WEST LEG) - 2,000 (2030) LOCAL STREET 0.079 (FD-20)  
HOLMES WAY (EAST LEG) - 2,800 (2030) LOCAL STREET 0.071 (HMA OVERLAY-15)

SCHAUMBURG ROAD = COOK COUNTY HIGHWAY A66



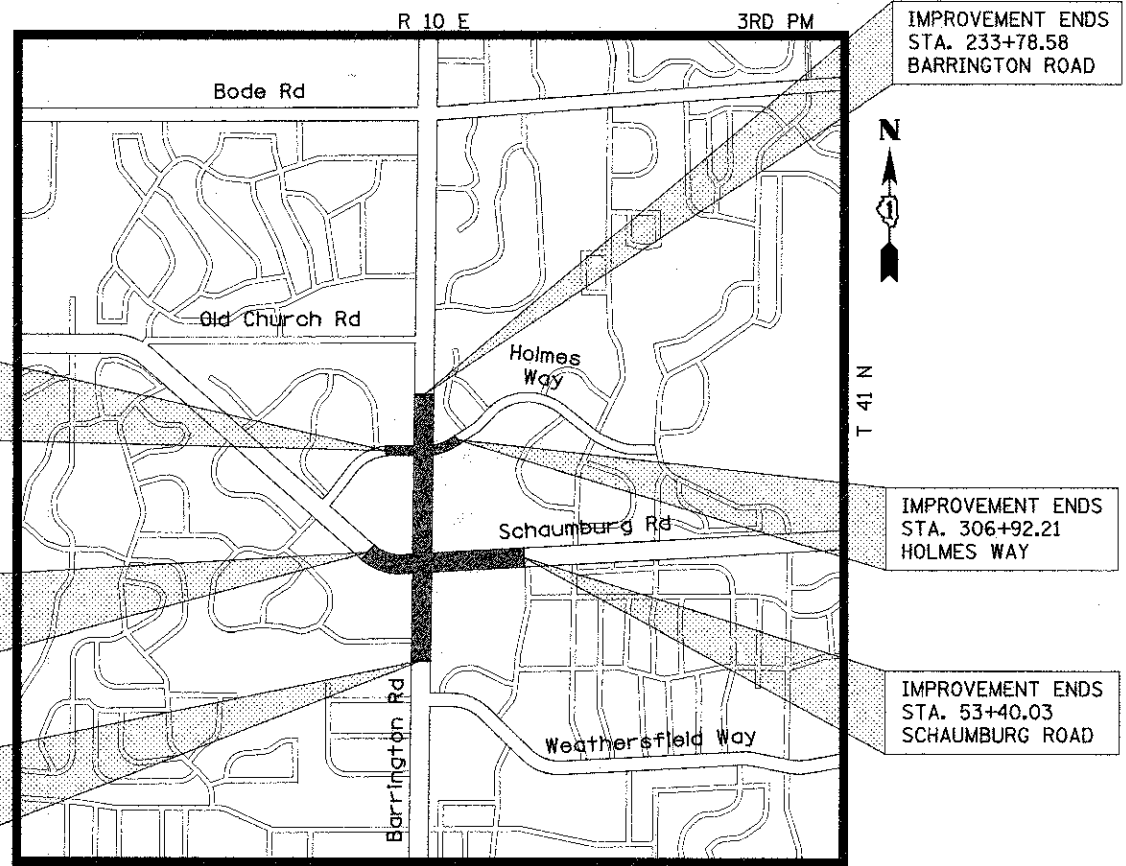
FULL SIZE PLANS HAVE BEEN PREPARED USING STANDARD ENGINEERING SCALES. REDUCED SIZED PLANS WILL NOT CONFORM TO STANDARD SCALES. IN MAKING MEASUREMENTS ON REDUCED PLANS, THE ABOVE SCALES MAY BE USED.

J.U.L.I.E.  
JOINT UTILITY LOCATION INFORMATION FOR EXCAVATION  
1-800-892-0123 OR 811

**CONTRACT NO. 63629**

**PROJECT LENGTH (NET AND GROSS):**  
BARRINGTON ROAD - 3,075.30 FT. (0.582 MILE)  
SCHAUMBURG ROAD - 1,820.53 FT. (0.345 MILE)  
HOLMES WAY - 768.95 FT. (0.146 MILE)

TOTAL - 5,664.78 FT. (1.073 MILE)



IMPROVEMENT BEGINS  
STA. 299+23.26  
HOLMES WAY

IMPROVEMENT BEGINS  
STA. 35+19.50  
SCHAUMBURG ROAD

IMPROVEMENT BEGINS  
STA. 203+03.28  
BARRINGTON ROAD

IMPROVEMENT ENDS  
STA. 233+78.58  
BARRINGTON ROAD

IMPROVEMENT ENDS  
STA. 306+92.21  
HOLMES WAY

IMPROVEMENT ENDS  
STA. 53+40.03  
SCHAUMBURG ROAD

LOCATION MAP  
NOT TO SCALE

SIGNED *[Signature]*  
DATE 8-15-12 EXPIRES 11-30-2011  
FOR DRAWINGS 1 TO 125, 176 TO 245

SIGNED *[Signature]*  
DATE 8/15/12 EXPIRES 11-30-2011  
FOR DRAWINGS 126 TO 144

PROGRAM AND OFFICE ENGINEER: CHARLES F. RIDDLE, P.E. (847) 705-4406, SCHAUMBURG  
CONSULTANT ENGINEER: DAVID KREEGER, P.E. CIVILTECH ENGINEERING, INC.