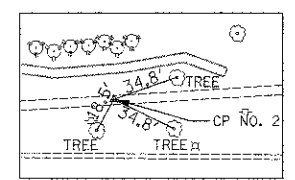
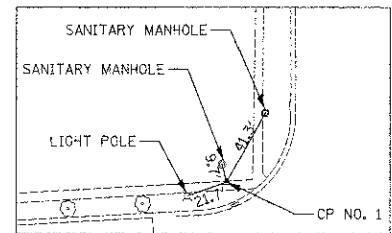




NOTE:  
THREE POINT TIES ARE PROVIDED ONLY TO FIND  
GENERAL LOCATION OF CONTROL POINT, NOT TO  
ACCURATELY RECREATE POINT.

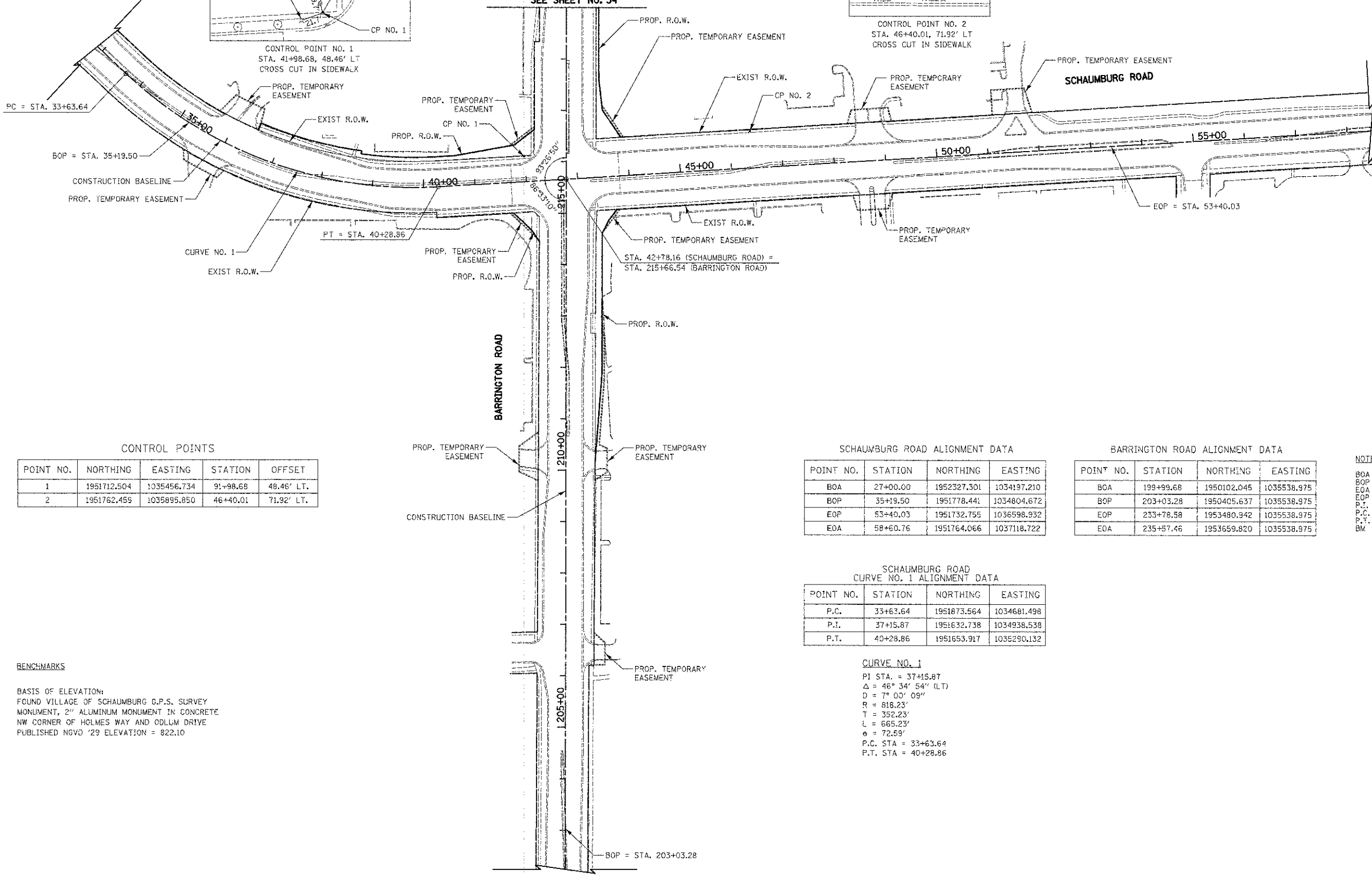


CONTROL POINT NO. 2  
STA. 46+40.01, 71.92' LT  
CROSS CUT IN SIDEWALK



CONTROL POINT NO. 1  
STA. 41+98.68, 48.46' LT  
CROSS CUT IN SIDEWALK

MATCH LINE STA. 219+00  
SEE SHEET NO. 34



CONTROL POINTS

POINT NO.	NORTHING	EASTING	STATION	OFFSET
1	1951712.504	1035456.734	91+98.68	48.46' LT.
2	1951762.459	1035895.850	46+40.01	71.92' LT.

SCHAUMBURG ROAD ALIGNMENT DATA

POINT NO.	STATION	NORTHING	EASTING
BOA	27+00.00	1952327.301	1034197.210
BOP	35+19.50	1951778.441	1034804.672
EOP	53+40.03	1951732.755	1036598.932
EOA	58+60.76	1951764.066	1037118.722

BARRINGTON ROAD ALIGNMENT DATA

POINT NO.	STATION	NORTHING	EASTING
BOA	199+99.68	1950102.045	1035538.975
BOP	203+03.28	1950405.637	1035538.975
EOP	233+78.58	1953480.942	1035538.975
EOA	235+57.46	1953659.820	1035538.975

NOTES:  
BOA = BEGINNING OF ALIGNMENT  
BOP = BEGINNING OF PROJECT  
EOA = END OF ALIGNMENT  
EOP = END OF PROJECT  
P.I. = POINT OF INTERSECTION  
P.C. = POINT OF CURVATURE  
P.T. = POINT OF TANGENT  
BM = BENCHMARK

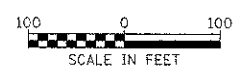
SCHAUMBURG ROAD  
CURVE NO. 1 ALIGNMENT DATA

POINT NO.	STATION	NORTHING	EASTING
P.C.	33+63.64	1951873.564	1034681.498
P.I.	37+15.87	1951632.738	1034938.538
P.T.	40+28.86	1951653.917	1035290.132

CURVE NO. 1  
PI STA. = 37+15.87  
Δ = 46° 34' 54" (LT)  
D = 7° 00' 09"  
R = 818.23'  
T = 352.23'  
L = 665.23'  
e = 72.59'  
P.C. STA = 33+63.64  
P.T. STA = 40+28.86

BENCHMARKS

BASIS OF ELEVATION:  
FOUND VILLAGE OF SCHAUMBURG G.P.S. SURVEY  
MONUMENT, 2" ALUMINUM MONUMENT IN CONCRETE  
NW CORNER OF HOLMES WAY AND ODLUM DRIVE  
PUBLISHED NGVD '29 ELEVATION = 822.10



FILE NAME = ...sheet\2329_A\Align & Ties_01.dgn	USER NAME = djh	DESIGNED = JAT	REVISED =	<b>STATE OF ILLINOIS DEPARTMENT OF TRANSPORTATION</b>	<b>BARRINGTON ROAD AND SCHAUMBURG ROAD ALIGNMENT AND TIES</b>		F.A.D. / RTE. / 1322	SECTION / 01-00074-00-CH	COUNTY / COOK	TOTAL SHEET / SHEETS: 33	
	PLOT SCALE = 1/8" = 100'	CHECKED = DJK	REVISED =		SCALE: 1" = 100'	SHEET NO. 1 OF 2 SHEETS	STA.	TO STA.	CONTRACT NO. 63629		
	PLOT DATE = 8/16/2012	DATE = 8-20-12	REVISED =		FED. ROAD DIST. NO. 1 ILLINOIS / FED. AID PROJECT N-CM-800305D						