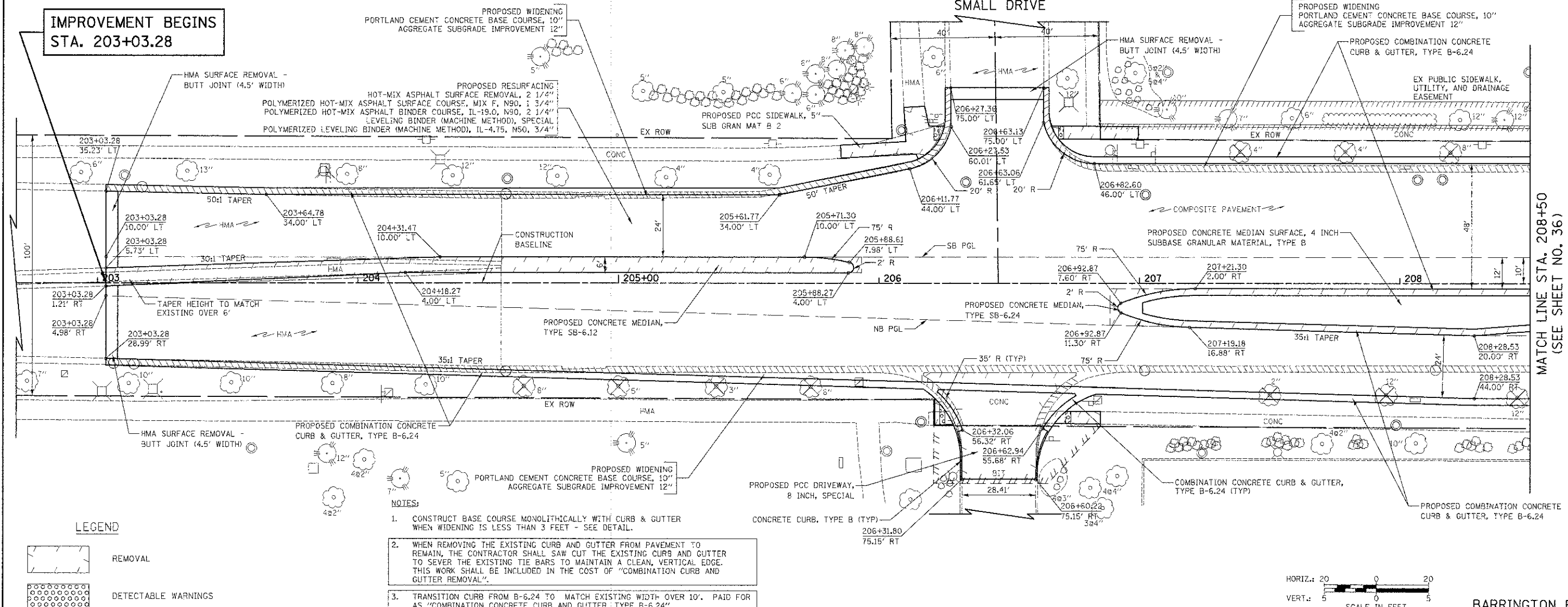




IMPROVEMENT BEGINS
STA. 203+03.28

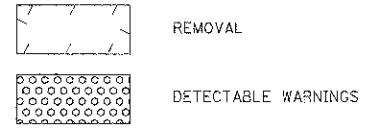


MATCH LINE STA. 208+50
(SEE SHEET NO. 36)

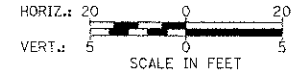
DATE	
BY	
REVISION	
PLANNED	
ALIGNED	
CHECKED	
INSTRUMENTED	
NO.	
PLAN	
NOTE BOOK	
NO.	

DATE	
BY	
REVISION	
GRADES CHECKED	
PLANNED	
ALIGNED	
CHECKED	
INSTRUMENTED	
NO.	
PROFILE	
NOTE BOOK	
NO.	

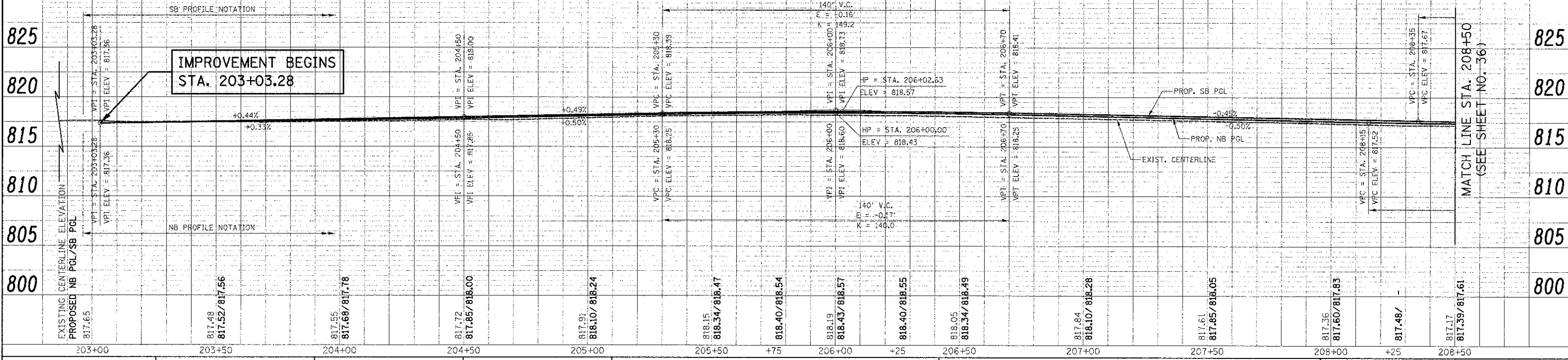
LEGEND



1. CONSTRUCT BASE COURSE MONOLITHICALLY WITH CURB & GUTTER WHEN WIDENING IS LESS THAN 3 FEET - SEE DETAIL.
2. WHEN REMOVING THE EXISTING CURB AND GUTTER FROM PAVEMENT TO REMAIN, THE CONTRACTOR SHALL SAW CUT THE EXISTING CURB AND GUTTER TO SEVER THE EXISTING TIE BARS TO MAINTAIN A CLEAN, VERTICAL EDGE. THIS WORK SHALL BE INCLUDED IN THE COST OF "COMBINATION CURB AND GUTTER REMOVAL".
3. TRANSITION CURB FROM B-6.24 TO MATCH EXISTING WIDTH OVER 10'. PAID FOR AS "COMBINATION CONCRETE CURB AND GUTTER, TYPE B-6.24".



BARRINGTON ROAD



MATCH LINE STA. 208+50
(SEE SHEET NO. 36)

FILE NAME =	USER NAME = djm	DESIGNED = JAT	REVISED =	STATE OF ILLINOIS DEPARTMENT OF TRANSPORTATION	BARRINGTON ROAD PLAN AND PROFILE	F.A.U. RFE.	SECTION	COUNTY	TOTAL SHEETS	SHEET NO.	
... \2329\road\veho\2329_PP_01.dgn		DRAWN = JAT	REVISED =			1322	01-00074-00-CH	COOK	245	35	
PLOT SCALE = 28.0000 / 1 in		CHECKED = DJK	REVISED =			CONTRACT NO. 63629					
PLOT DATE = 8/18/2012		DATE = 8-20-12	REVISED =			FED. ROAD DIST. NO. 1 (ILLINOIS) FED. AID PROJECT M-CMM-800305U					

SCALE: 1" = 20' SHEET NO. 1 OF 14 SHEETS STA. 203+03.28 TO STA. 208+50