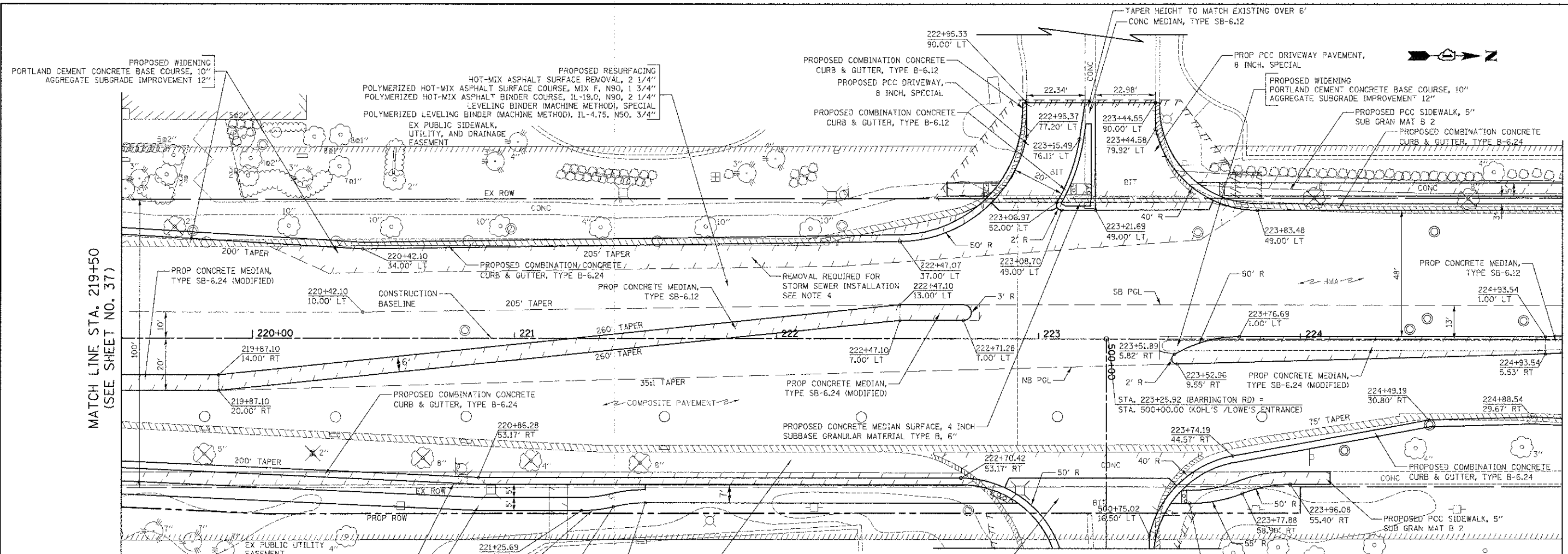


DATE	
BY	
PLAN	
NO.	
DATE	
BY	
PROF. FILE	
NO.	
DATE	
BY	

DATE	
BY	
PROF. FILE	
NO.	
DATE	
BY	
PROF. FILE	
NO.	
DATE	
BY	



- NOTES:**
- CONSTRUCT BASE COURSE MONOLITHICALLY WITH CURB & GUTTER WHEN WIDENING IS LESS THAN 3 FEET - SEE DETAIL.
 - WHEN REMOVING THE EXISTING CURB AND GUTTER FROM PAVEMENT TO REMAIN, THE CONTRACTOR SHALL SAW CUT THE EXISTING CURB AND GUTTER TO SEVER THE EXISTING TIE BARS TO MAINTAIN A CLEAN, VERTICAL EDGE. THIS WORK SHALL BE INCLUDED IN THE COST OF "COMBINATION CURB AND GUTTER REMOVAL".
 - TRANSITION CURB FROM B-6.24 TO B-6.12 OVER 10'. PAID FOR AS "COMBINATION CONCRETE CURB & GUTTER, TYPE B-6.24".
 - A QUANTITY OF LEVELING BINDER HAS BEEN INCLUDED TO TEMPORARILY OVERLAY THE PAVEMENT WIDENING IN ORDER TO OPEN THE OUTSIDE LANE TO TRAFFIC AFTER THE INSTALLATION OF THE STORM SEWER MAINLINE.

