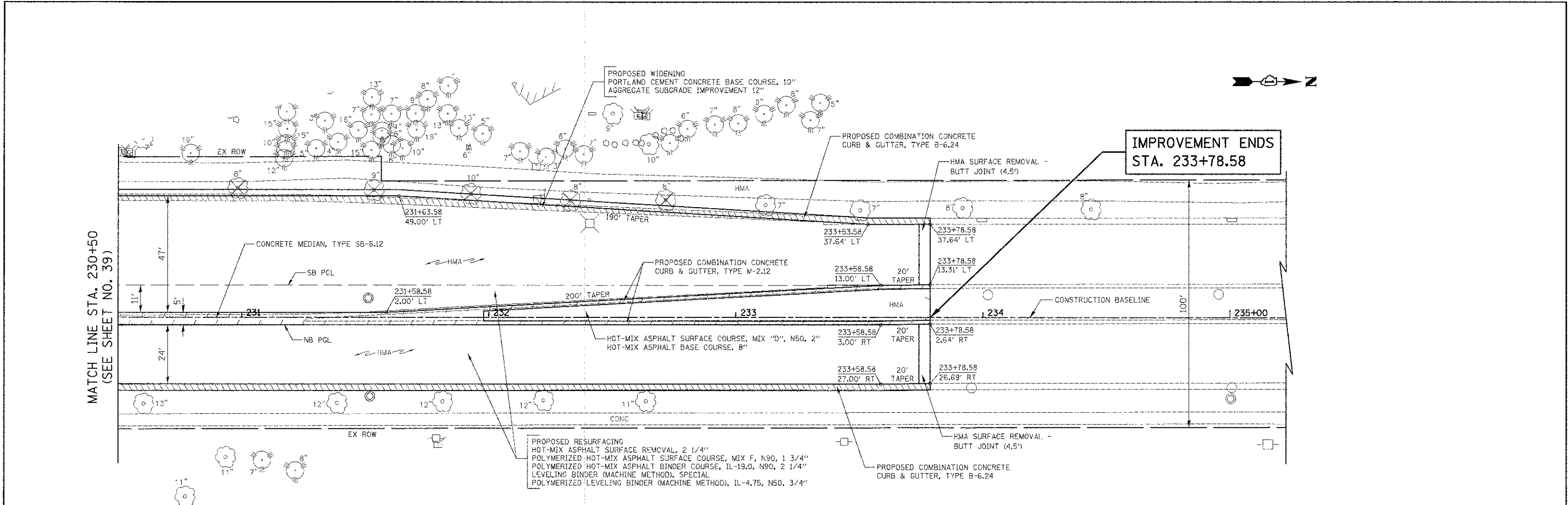


DATE	
BY	
REVISION	
NO.	
DATE	
BY	
REVISION	
NO.	
DATE	
BY	
REVISION	
NO.	

DATE	
BY	
REVISION	
NO.	
DATE	
BY	
REVISION	
NO.	

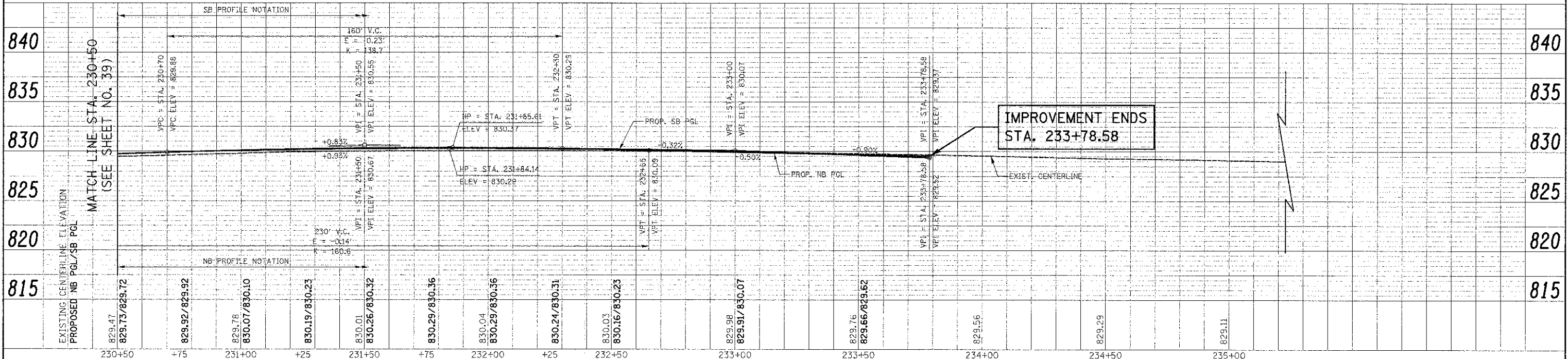


**NOTES:**

1. CONSTRUCT BASE COURSE MONOLITHICALLY WITH CURB & GUTTER WHEN WIDENING IS LESS THAN 3 FEET - SEE DETAIL.
2. WHEN REMOVING THE EXISTING CURB AND GUTTER FROM PAVEMENT TO REMAIN, THE CONTRACTOR SHALL SAW CUT THE EXISTING CURB AND GUTTER TO SEVER THE EXISTING TIE BARS TO MAINTAIN A CLEAN, VERTICAL EDGE. THIS WORK SHALL BE INCLUDED IN THE COST OF "COMBINATION CURB AND GUTTER REMOVAL".



**BARRINGTON ROAD**



FILE NAME = ... \2329\road\shou\2329_PP_08.dgn	USER NAME = e.jk	DESIGNED - JAT	REVISED -	<b>STATE OF ILLINOIS</b> <b>DEPARTMENT OF TRANSPORTATION</b>	<b>BARRINGTON ROAD</b> <b>PLAN AND PROFILE</b>	F.A.U. RTE. 1322	SECTION 01-00074-00-CH	COUNTY COOK	TOTAL SHEETS 245	SHEET NO. 40	
PILOT SCALE = 20.0000' / 1" =	CHECKED - DJK	REVISED -	REVISED -			SCALE: 1" = 20'	SHEET NO. 6 OF 14 SHEETS	STA. 230+50	TO STA. 233+78.58	FED. ROAD DIST. NO. 1 ILLINOIS FED. AID PROJECT M-CM-8003(051)	
PILOT DATE = 8/16/2012	DATE - 8-20-12	REVISED -	REVISED -								