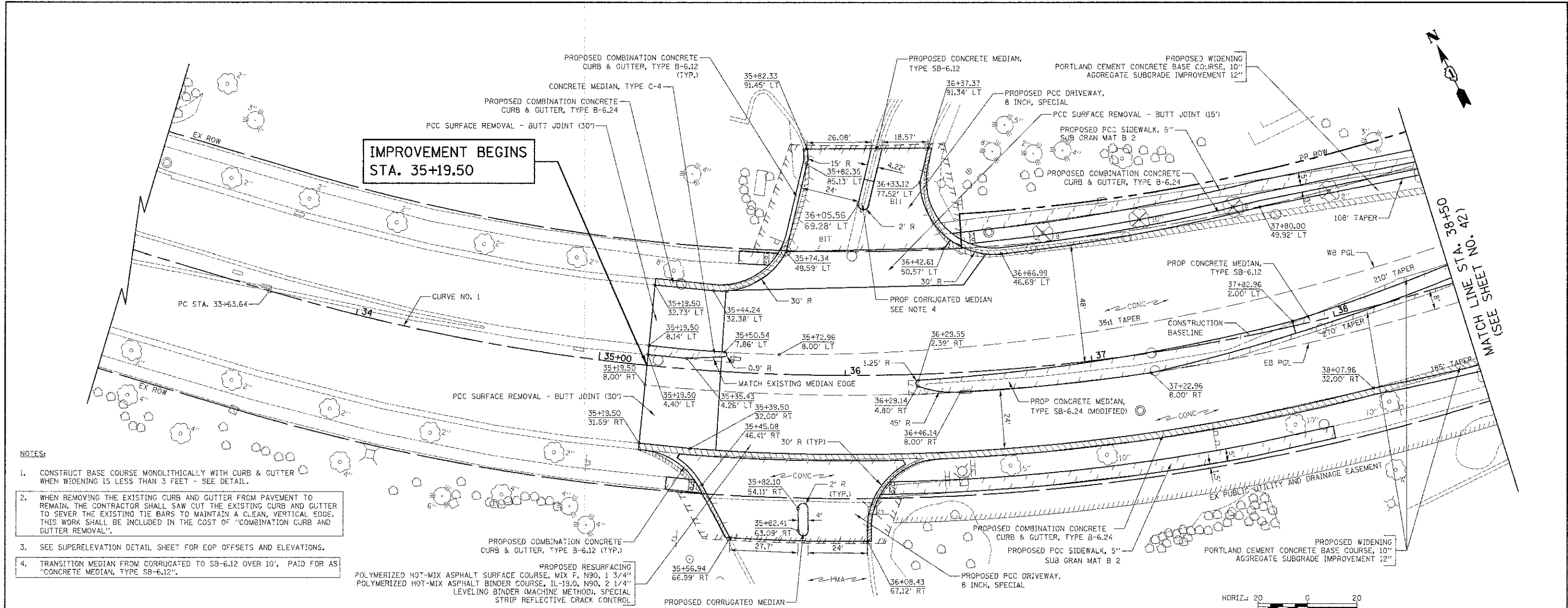
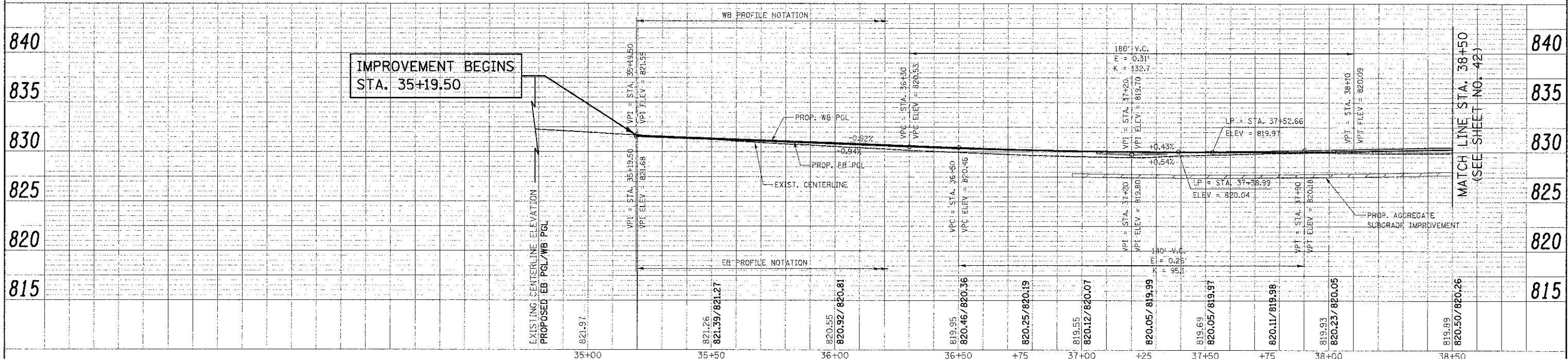
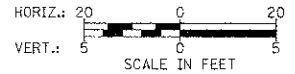


DATE	
BY	
REVISION	
NO.	
DATE	
BY	
REVISION	
NO.	
DATE	
BY	
REVISION	
NO.	

DATE	
BY	
REVISION	
NO.	
DATE	
BY	
REVISION	
NO.	



- NOTES:
- CONSTRUCT BASE COURSE MONOLITHICALLY WITH CURB & GUTTER WHEN WIDENING IS LESS THAN 3 FEET - SEE DETAIL.
 - WHEN REMOVING THE EXISTING CURB AND GUTTER FROM PAVEMENT TO REMAIN, THE CONTRACTOR SHALL SAW CUT THE EXISTING CURB AND GUTTER TO SEVER THE EXISTING TIE BARS TO MAINTAIN A CLEAN, VERTICAL EDGE. THIS WORK SHALL BE INCLUDED IN THE COST OF "COMBINATION CURB AND GUTTER REMOVAL".
 - SEE SUPERELEVATION DETAIL SHEET FOR EOP OFFSETS AND ELEVATIONS.
 - TRANSITION MEDIAN FROM CORRUGATED TO SB-6.12 OVER 10', PAID FOR AS "CONCRETE MEDIAN, TYPE SB-6.12".



FILE NAME =	JSSR NAME = djk	DESIGNED - JAT	REVISED -	STATE OF ILLINOIS DEPARTMENT OF TRANSPORTATION	SCHAUMBURG ROAD PLAN AND PROFILE	F.A.U. 1322 SECTION 01-00074-00-CH COUNTY COOK TOTAL SHEETS 245 SHEET NO. 41 CONTRACT NO. 63629 FED. ROAD DIST. NO. 1 ILLINOIS FED. AID PROJECT M-CM-800(051)
...\\2329\oad\sheet\2329_PP_07.dgn		DRAWN - JAT	REVISED -			
PLOT SCALE = 28,800 / 1" = 100'		CHECKED - DJK	REVISED -			
PLOT DATE = 6/16/2012		DATE - 8-20-12	REVISED -	SCALE: 1" = 20'	SHEET NO. 7 OF 14 SHEETS	STA. 35+19.50 TO STA. 38+50