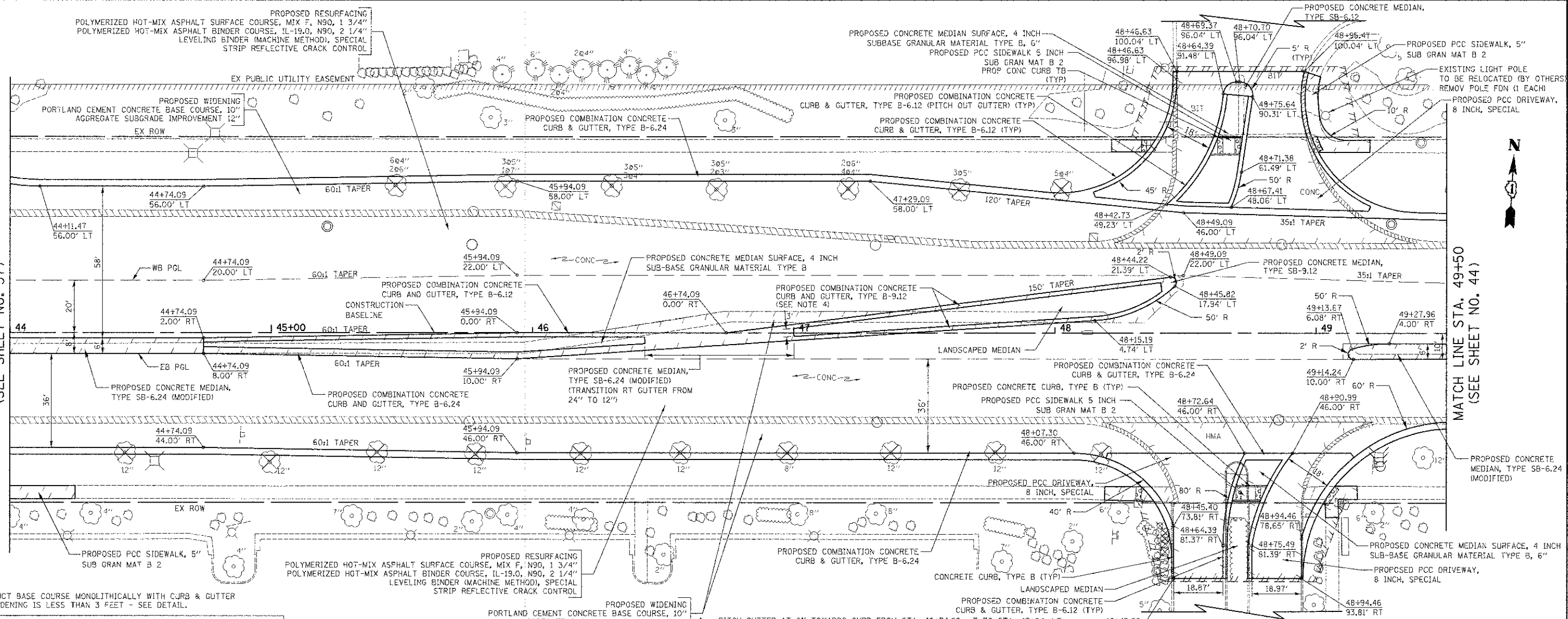


DATE:	
BY:	
PROJECT:	
PLANNED:	
DESIGNED:	
CHECKED:	
DATE:	

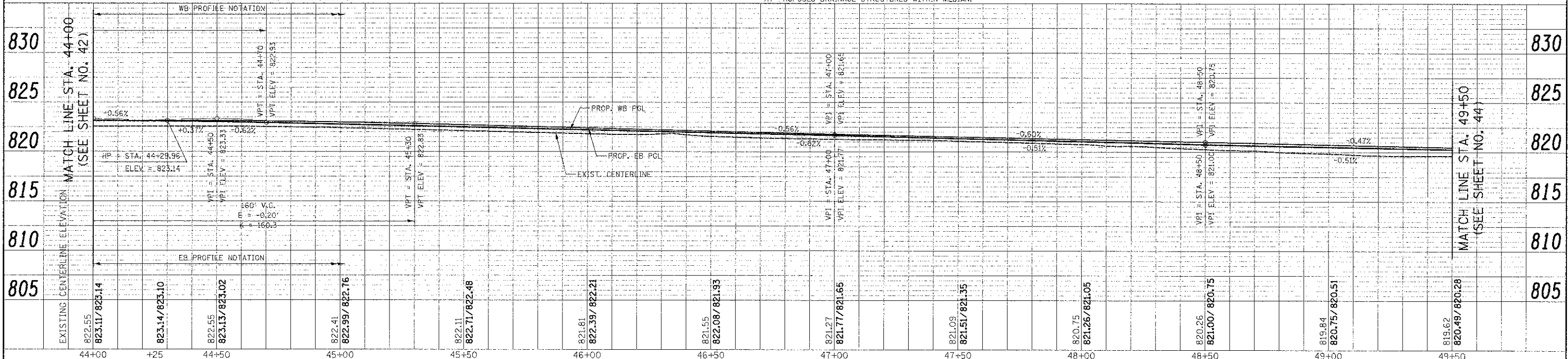
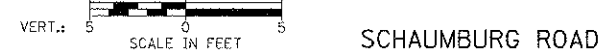
DATE:	
BY:	
PROJECT:	
PLANNED:	
DESIGNED:	
CHECKED:	
DATE:	

MATCH LINE STA. 44+00  
(SEE SHEET NO. 37)

MATCH LINE STA. 49+50  
(SEE SHEET NO. 44)



- NOTES:**
- CONSTRUCT BASE COURSE MONOLITHICALLY WITH CURB & GUTTER WHEN WIDENING IS LESS THAN 3 FEET - SEE DETAIL.
  - WHEN REMOVING THE EXISTING CURB AND GUTTER FROM PAVEMENT TO REMAIN, THE CONTRACTOR SHALL SAW CUT THE EXISTING CURB AND GUTTER TO SEVER THE EXISTING TIE BARS TO MAINTAIN A CLEAN, VERTICAL EDGE. THIS WORK SHALL BE INCLUDED IN THE COST OF "COMBINATION CURB AND GUTTER REMOVAL".
  - TRANSITION CURB FROM B-6.24 TO B-6.12 OR CURB TYPE B OVER 10'. PAID FOR AS "COMBINATION CONCRETE CURB AND GUTTER, TYPE B-6.24".
  - PITCH GUTTER AT 6% TOWARDS CURB FROM STA. 46+74.09, LT TO STA. 47+64, LT  
PITCH GUTTER AT 2% AWAY FROM CURB FROM STA. 47+64, LT TO STA. 48+49.09 LT
  - SEE DETAIL (SHEET NO. 176) FOR GUTTER WIDENING AT PROPOSED DRAINAGE STRUCTURES WITHIN MEDIAN.



FILE NAME: ...2329\csp\sheet\2329_PP_09.dgn	USER NAME: d.j.k.	DESIGNED: JAT	REVISOR:	STATE OF ILLINOIS DEPARTMENT OF TRANSPORTATION	SCHAUMBURG ROAD PLAN AND PROFILE	F.A.H. 1322	SECTION 01-00074-00-CH	COUNTY COOK	TOTAL SHEETS 245	SHEET NO. 43
PLCT SCALE: 20.0000' / 1"	CHECKED: DJK	DATE: 8-20-12	REVISOR:	SCALE: 1" = 20'	SHEET NO. 9 OF 14 SHEETS	STA. 44+00 TO STA. 49+50	CONTRACT NO. 63629		FED. ROAD DIST. NO. 1 ILLINOIS FED. AID PROJECT W-DM-80030501	