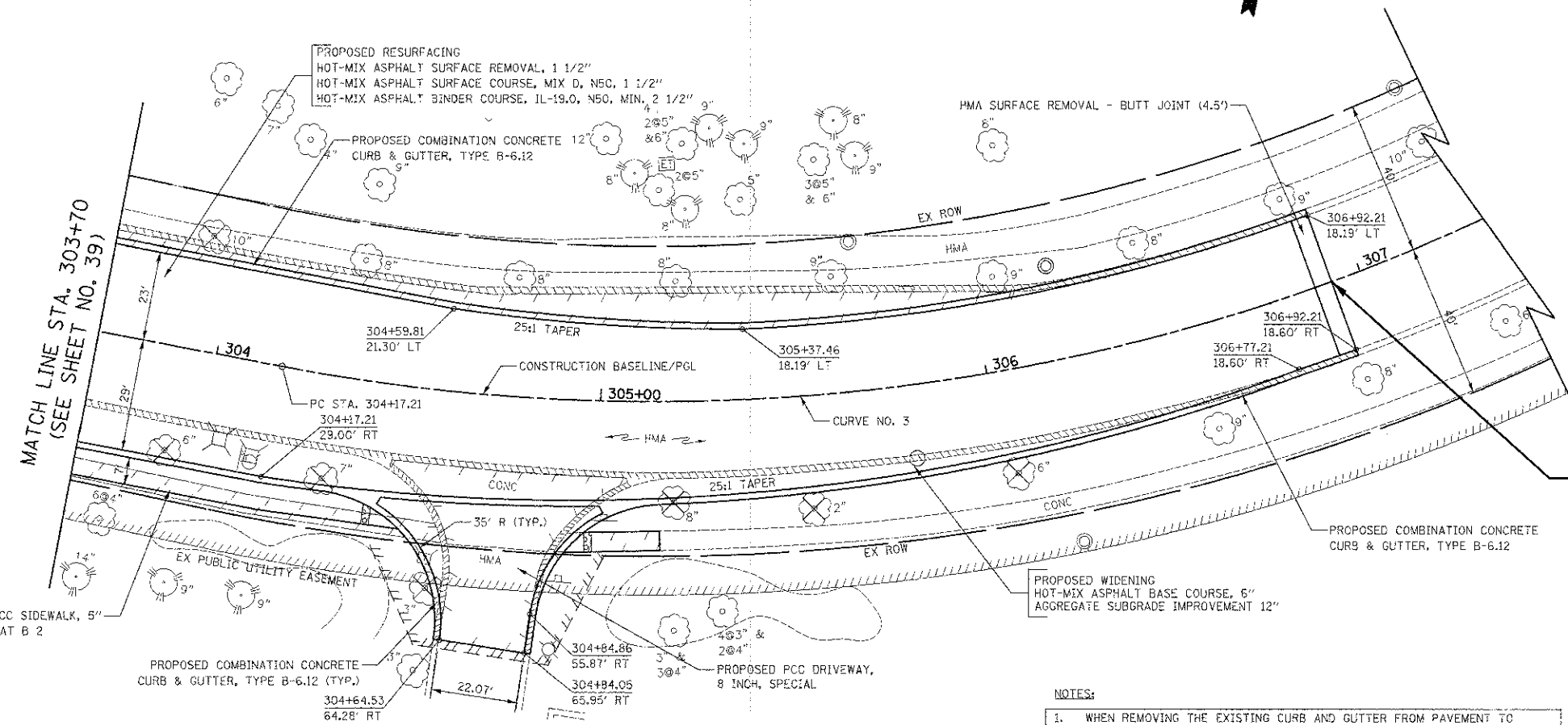


DATE	
BY	
PROJECT	
PLANNED	
NOTED	
NO. 1	
NO. 2	
NO. 3	
NO. 4	
NO. 5	
NO. 6	
NO. 7	
NO. 8	
NO. 9	
NO. 10	
NO. 11	
NO. 12	
NO. 13	
NO. 14	
NO. 15	
NO. 16	
NO. 17	
NO. 18	
NO. 19	
NO. 20	
NO. 21	
NO. 22	
NO. 23	
NO. 24	
NO. 25	
NO. 26	
NO. 27	
NO. 28	
NO. 29	
NO. 30	
NO. 31	
NO. 32	
NO. 33	
NO. 34	
NO. 35	
NO. 36	
NO. 37	
NO. 38	
NO. 39	
NO. 40	
NO. 41	
NO. 42	
NO. 43	
NO. 44	
NO. 45	
NO. 46	
NO. 47	
NO. 48	
NO. 49	
NO. 50	
NO. 51	
NO. 52	
NO. 53	
NO. 54	
NO. 55	
NO. 56	
NO. 57	
NO. 58	
NO. 59	
NO. 60	
NO. 61	
NO. 62	
NO. 63	
NO. 64	
NO. 65	
NO. 66	
NO. 67	
NO. 68	
NO. 69	
NO. 70	
NO. 71	
NO. 72	
NO. 73	
NO. 74	
NO. 75	
NO. 76	
NO. 77	
NO. 78	
NO. 79	
NO. 80	
NO. 81	
NO. 82	
NO. 83	
NO. 84	
NO. 85	
NO. 86	
NO. 87	
NO. 88	
NO. 89	
NO. 90	
NO. 91	
NO. 92	
NO. 93	
NO. 94	
NO. 95	
NO. 96	
NO. 97	
NO. 98	
NO. 99	
NO. 100	

DATE	
BY	
PROJECT	
PLANNED	
NOTED	
NO. 1	
NO. 2	
NO. 3	
NO. 4	
NO. 5	
NO. 6	
NO. 7	
NO. 8	
NO. 9	
NO. 10	
NO. 11	
NO. 12	
NO. 13	
NO. 14	
NO. 15	
NO. 16	
NO. 17	
NO. 18	
NO. 19	
NO. 20	
NO. 21	
NO. 22	
NO. 23	
NO. 24	
NO. 25	
NO. 26	
NO. 27	
NO. 28	
NO. 29	
NO. 30	
NO. 31	
NO. 32	
NO. 33	
NO. 34	
NO. 35	
NO. 36	
NO. 37	
NO. 38	
NO. 39	
NO. 40	
NO. 41	
NO. 42	
NO. 43	
NO. 44	
NO. 45	
NO. 46	
NO. 47	
NO. 48	
NO. 49	
NO. 50	
NO. 51	
NO. 52	
NO. 53	
NO. 54	
NO. 55	
NO. 56	
NO. 57	
NO. 58	
NO. 59	
NO. 60	
NO. 61	
NO. 62	
NO. 63	
NO. 64	
NO. 65	
NO. 66	
NO. 67	
NO. 68	
NO. 69	
NO. 70	
NO. 71	
NO. 72	
NO. 73	
NO. 74	
NO. 75	
NO. 76	
NO. 77	
NO. 78	
NO. 79	
NO. 80	
NO. 81	
NO. 82	
NO. 83	
NO. 84	
NO. 85	
NO. 86	
NO. 87	
NO. 88	
NO. 89	
NO. 90	
NO. 91	
NO. 92	
NO. 93	
NO. 94	
NO. 95	
NO. 96	
NO. 97	
NO. 98	
NO. 99	
NO. 100	

EDGE OF PAVEMENT OFFSETS

STATION	LT EOP	RT EOP
304+25	22.94' LT	28.69' RT
304+50	22.92' LT	27.69' RT
304+75	20.69' LT	26.69' RT
305+00	19.69' LT	25.69' RT
305+25	18.69' LT	24.69' RT
305+50	-	23.69' RT
305+75	-	22.69' RT
306+00	-	21.69' RT
306+25	-	20.69' RT
306+50	-	19.69' RT
306+75	-	18.69' RT

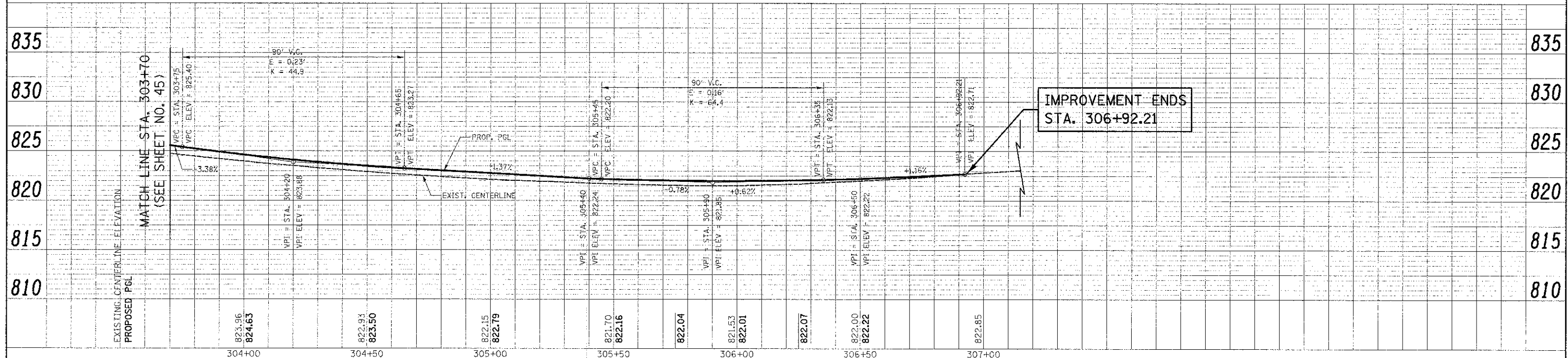


**IMPROVEMENT ENDS  
STA. 306+92.21**

**NOTES:**  
1. WHEN REMOVING THE EXISTING CURB AND GUTTER FROM PAVEMENT TO REMAIN, THE CONTRACTOR SHALL SAW CUT THE EXISTING CURB AND GUTTER TO SEVER THE EXISTING TIE BARS TO MAINTAIN A CLEAN, VERTICAL EDGE. THIS WORK SHALL BE INCLUDED IN THE COST OF "COMBINATION CURB AND GUTTER REMOVAL".



HOLMES WAY



FILE NAME = ... \2329\road\sheet\2229_PP_12.dgn	USER NAME = djc	DESIGNED - JAT	REVISED -	<b>STATE OF ILLINOIS DEPARTMENT OF TRANSPORTATION</b>	<b>HOLMES WAY PLAN AND PROFILE</b>	F.A.U. RTE. = 1322	SECTION = 01-00074-00-CH	COUNTY = COOK	TOTAL SHEETS = 245	SHEET NO. = 46	
PLOT SCALE = 20,0000' / in.	CHECKED - DJK	REVISED -	REVISED -			SCALE: 1" = 20'	SHEET NO. 12 OF 14 SHEETS	STA. 303+70	TO STA. 306+92.21	FED. ROAD DIST. NO. 1	ILLINOIS FED. AID PROJECT M-CMM-8003(051)
PLOT DATE = 8/16/2012	DATE = 8-20-12	REVISED -	REVISED -								