

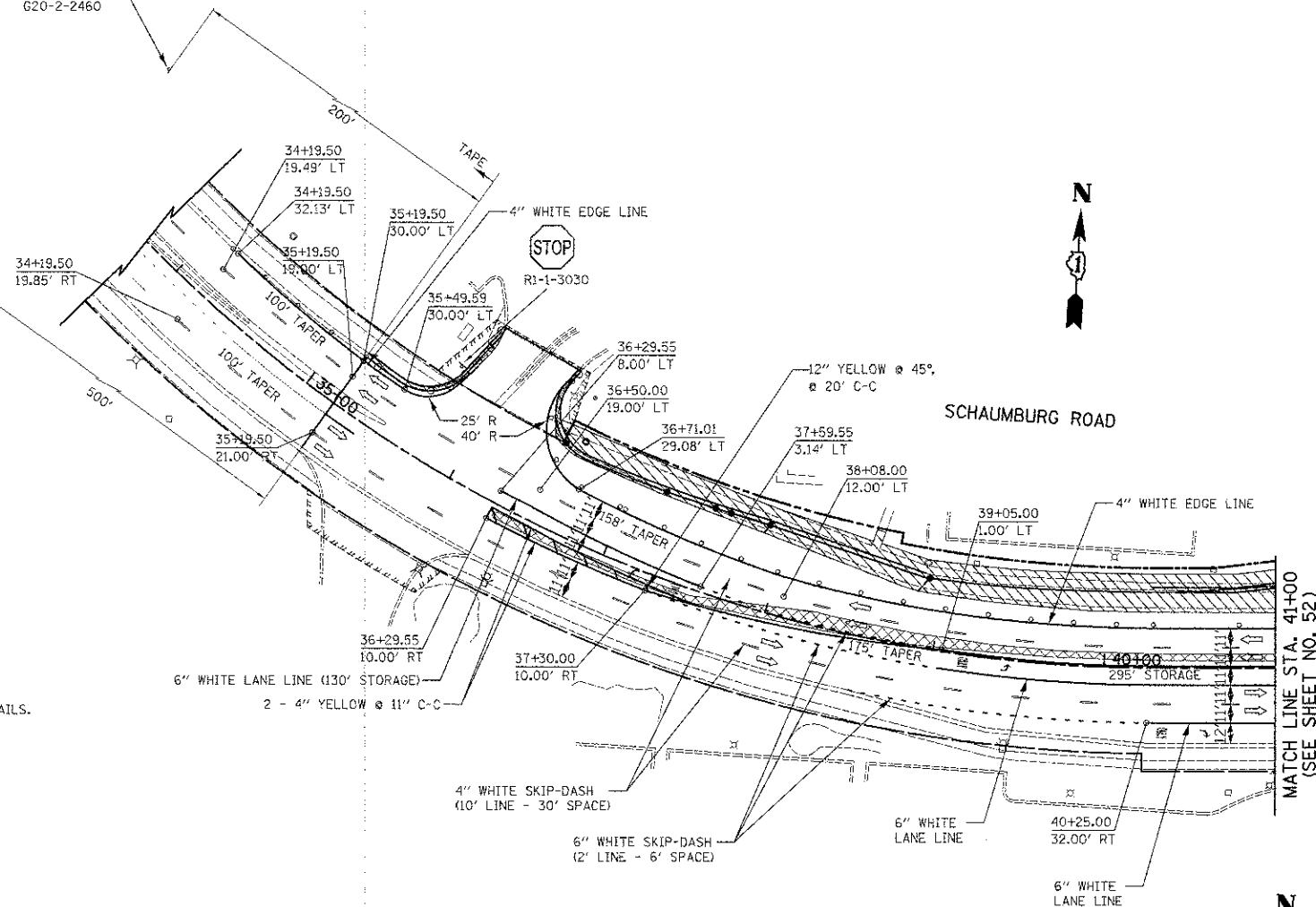
TEMPORARY INFORMATION SIGN-
LOCATE AS DIRECTED BY THE ENGINEER
(SEE SHEET NO.193 FOR DETAILS)

END
CONSTRUCTION
G20-2-2460



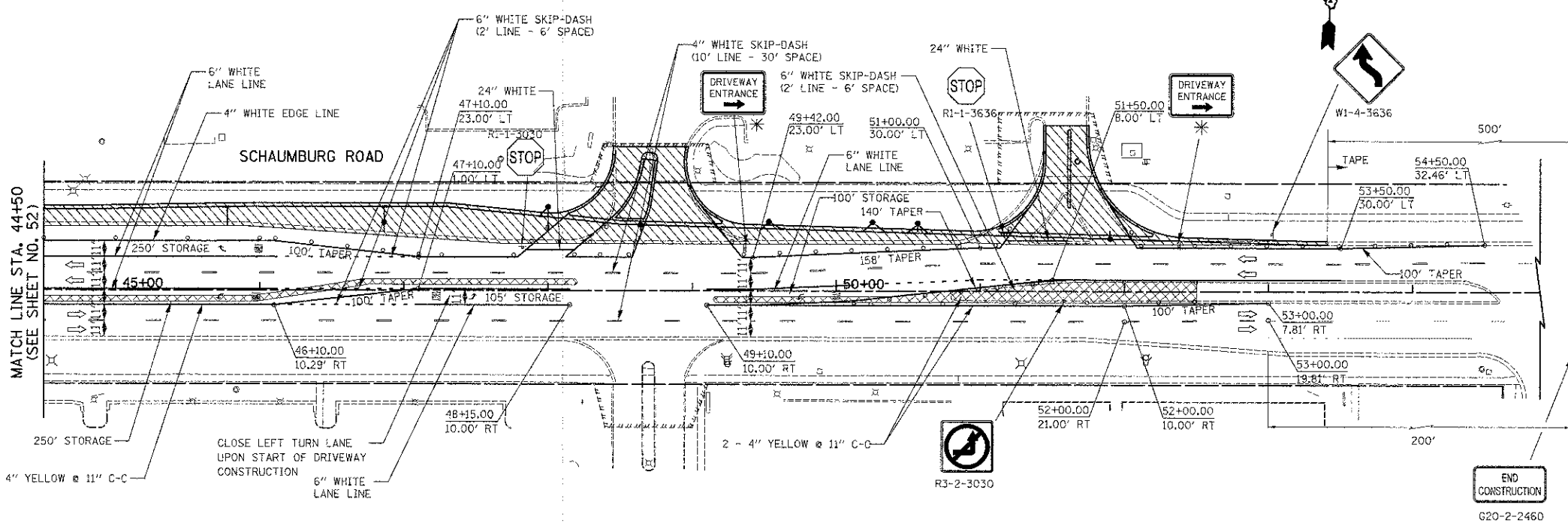
W20-110)-4848

NOTE:
* SEE SHEET NO.194 FOR SIGN DETAILS.



LEGEND

- TYPE II BARRICADES OR DRUMS WITH MONO DIRECTIONAL STEADY BURN LIGHT
- DIRECTION OF TRAFFIC
- ⊥ TEMPORARY TRAFFIC SIGN ON PERMANENT SUPPORT
- ⊥ TYPE III BARRICADE
- ▨ WORK ZONE
- ▩ TEMPORARY PAVEMENT



W20-110)-4848

TEMPORARY INFORMATION SIGN-
LOCATE AS DIRECTED BY THE ENGINEER
(SEE SHEET NO.193 FOR DETAILS)



END
CONSTRUCTION
G20-2-2460



FILE NAME = ...sheet\2329_MOT_01_03_4LT.dgn	USER NAME = djh	DESIGNED - BLG	REVISED -	STATE OF ILLINOIS DEPARTMENT OF TRANSPORTATION	BARRINGTON ROAD AND SCHAUMBURG ROAD MAINTENANCE OF TRAFFIC - STAGE 1	F.A.D. RTE. 1322	SECTION 01-00074-0C-CH	COUNTY COOK	TOTAL SHEETS 245	SHEET NO. 54	
PLLOT SCALE = 50.0000' / 1" = 50'	CHECKED - DJK	DATE - 8-20-12	REVISED -			SCALE: 1" = 50'	SHEET NO. 3 OF 10 SHEETS	STA. 35+19.50 TO STA. 52+99.92	CONTRACT NO. 63629		
PLLOT DATE = 10/23/2012								FED. ROAD DIST. NO. 1 (ILLINOIS) FED. AID PROJECT N-CMW-800305D			