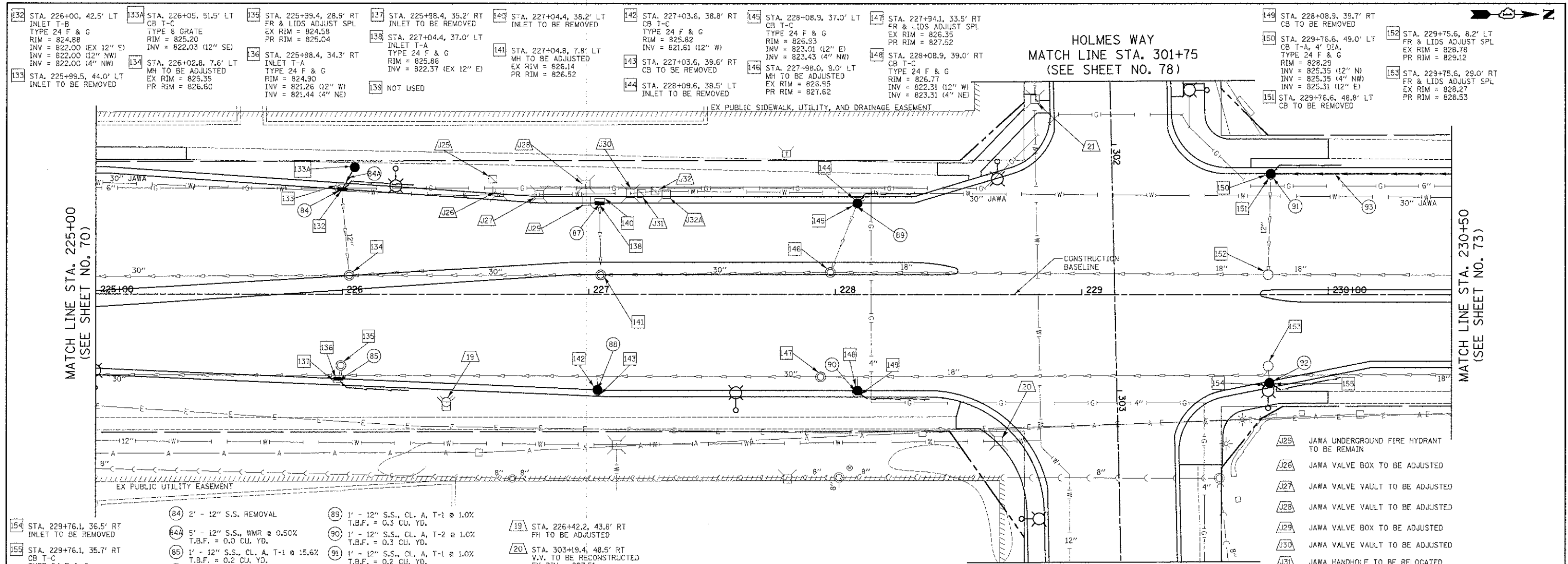
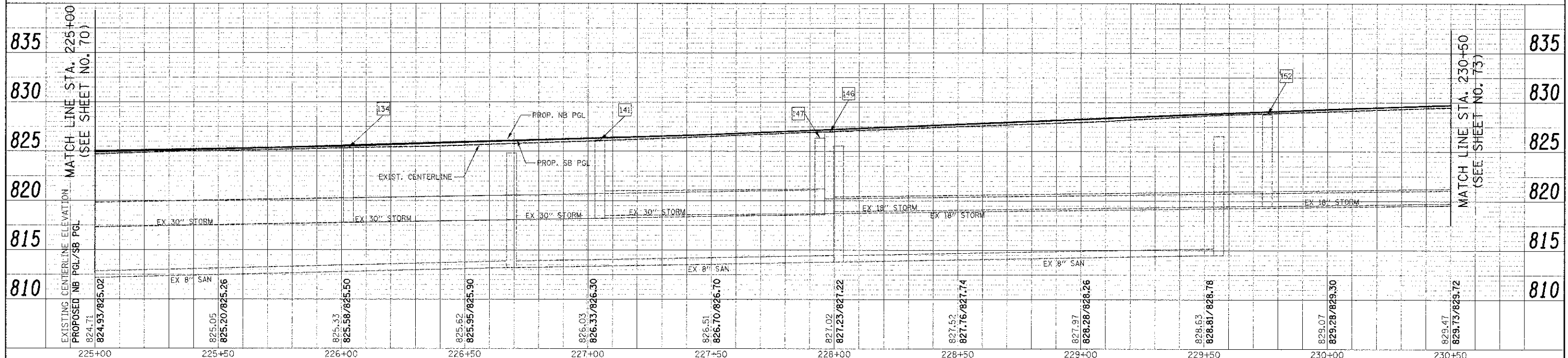


DATE	
BY	
REVISION	
NO. 1	
NO. 2	
NO. 3	
NO. 4	
NO. 5	
NO. 6	
NO. 7	
NO. 8	
NO. 9	
NO. 10	

DATE	
BY	
REVISION	
NO. 1	
NO. 2	
NO. 3	
NO. 4	
NO. 5	
NO. 6	
NO. 7	
NO. 8	
NO. 9	
NO. 10	



- 132 STA. 226+00, 42.5' LT INLET T-B TYPE 24 F & G RIM = 824.88 INV = 822.00 (EX 12" E) INV = 822.00 (12" NW)
- 133 STA. 226+05, 51.5' LT CB T-C TYPE 8 GRATE RIM = 825.20 INV = 822.03 (12" SE)
- 134 STA. 226+02.8, 7.6' LT MH TO BE ADJUSTED EX RIM = 825.35 PR RIM = 826.60
- 135 STA. 225+98.4, 28.9' RT FR & LIDS ADJUST SPL EX RIM = 824.58 PR RIM = 825.04
- 136 STA. 225+98.4, 34.3' RT INLET T-A TYPE 24 F & G RIM = 824.90 INV = 821.26 (12" W) INV = 821.44 (4" NE)
- 137 STA. 225+98.4, 35.2' RT INLET TO BE REMOVED
- 138 STA. 227+04.4, 37.0' LT INLET T-A TYPE 24 F & G RIM = 825.86 INV = 822.37 (EX 12" E)
- 139 NOT USED
- 140 STA. 227+04.8, 7.8' LT MH TO BE ADJUSTED EX RIM = 826.14 PR RIM = 826.52
- 141 STA. 227+04.4, 38.2' LT INLET TO BE REMOVED
- 142 STA. 227+03.6, 38.8' RT CB T-C TYPE 24 F & G RIM = 825.82 INV = 821.61 (12" W)
- 143 STA. 227+03.6, 39.6' RT CB TO BE REMOVED
- 144 STA. 228+09.6, 38.5' LT INLET TO BE REMOVED
- 145 STA. 228+08.9, 37.0' LT CB T-C TYPE 24 F & G RIM = 826.93 INV = 823.01 (12" E) INV = 823.43 (4" NW)
- 146 STA. 227+98.0, 9.0' LT MH TO BE ADJUSTED EX RIM = 826.95 PR RIM = 827.62
- 147 STA. 227+94.1, 33.5' RT FR & LIDS ADJUST SPL EX RIM = 826.35 PR RIM = 827.52
- 148 STA. 228+08.9, 39.0' RT CB T-C TYPE 24 F & G RIM = 826.77 INV = 822.31 (12" W) INV = 823.31 (4" NE)
- 149 STA. 228+08.9, 39.7' RT CB TO BE REMOVED
- 150 STA. 229+76.6, 49.0' LT CB T-A, 4' DIA. TYPE 24 F & G RIM = 828.29 INV = 825.35 (12" N) INV = 825.35 (4" NW) INV = 825.31 (12" E)
- 151 STA. 229+76.6, 48.8' LT CB TO BE REMOVED
- 152 STA. 229+75.6, 8.2' LT FR & LIDS ADJUST SPL EX RIM = 828.78 PR RIM = 829.12
- 153 STA. 229+75.6, 29.0' RT FR & LIDS ADJUST SPL EX RIM = 828.27 PR RIM = 828.53



FILE NAME =	USER NAME = j.k	DESIGNED - JAT	REVISED -	STATE OF ILLINOIS DEPARTMENT OF TRANSPORTATION	BARRINGTON ROAD DRAINAGE AND UTILITIES	F.A.U. R.T.E. 1322	SECTION 01-00074-00-CH	COUNTY COOK	TOTAL SHEETS 245	SHEET NO. 72
... \2329\ced\sheet\2329.Dw_05.dgn	PLOT SCALE = 20,0000' / in.	CHECKED - JJK	REVISED -						CONTRACT NO. 63629	
	PLOT DATE = 8/17/2012	DATE - 8-20-12	REVISED -						FED. ROAD DIST. NO. 1 S.L.N.O.T.S. FED. AID PROJECT M-CMM-90031051	