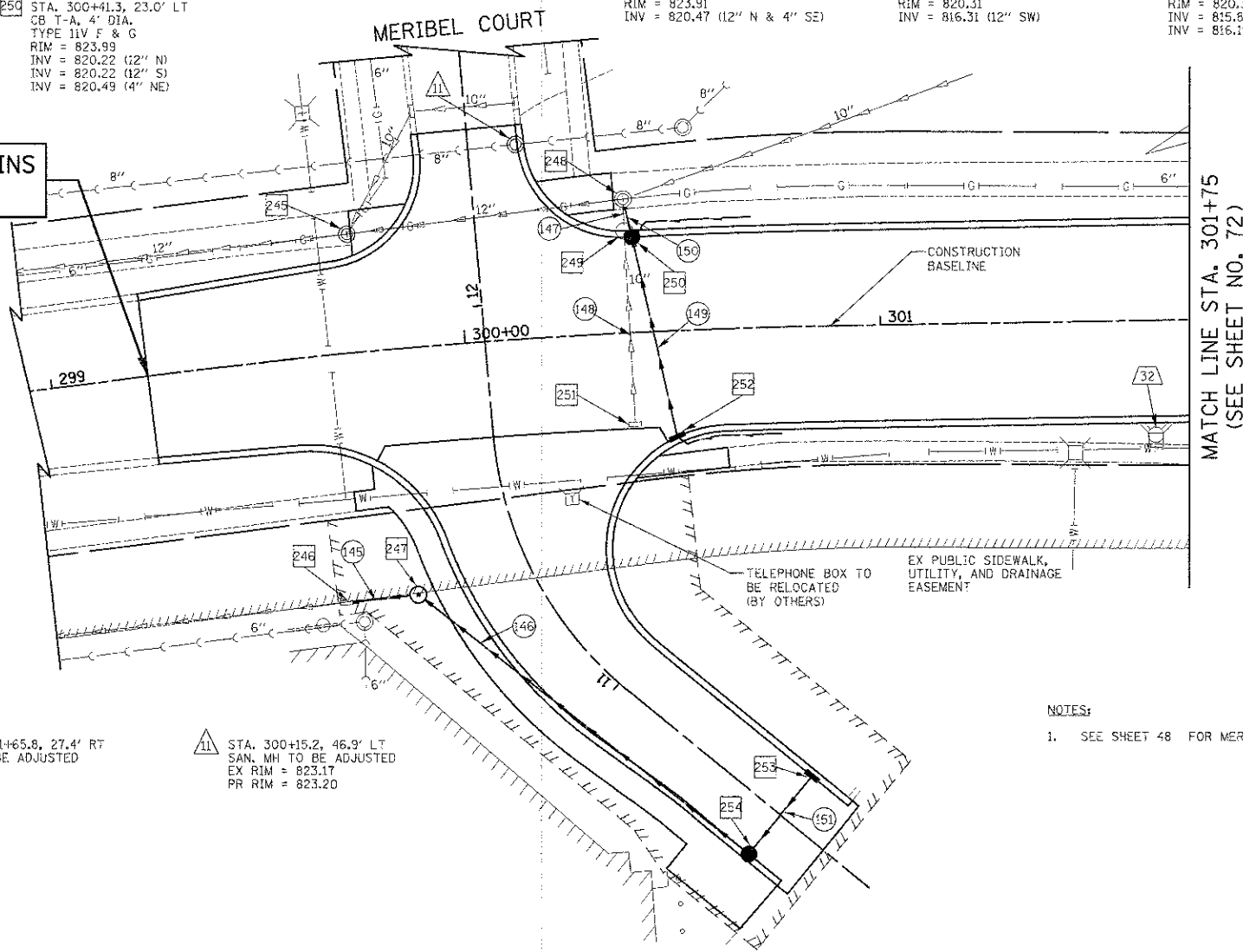


DATE	
BY	
REVISION	
PLAN	
NOTE BOOK	
NO.	

DATE	
BY	
REVISION	
PROFILE	
NOTE BOOK	
NO.	

- 245 STA. 299+74.1, 28.6' LT
MH TO BE ADJUSTED
EX RIM = 823.34
PR RIM = 823.36
- 246 STA. 11+43.5, 44.0' LT
EXISTING INLET
INV = 815.20 (EX 12" W)
INV = 815.20 (12" E)
- 247 STA. 11+40.1, 27.2' LT
MH T-A, 4'-DIA.,
TYPE 1 FR., C.L.
RIM = 822.80
INV = 815.27 (12" W)
INV = 815.37 (12" SE)
- 248 STA. 300+39.7, 32.2' LT
MH TO BE RECONSTRUCTED
EX RIM = 824.63
PR RIM = 822.83
INV = 820.2 (EX 12" W)
INV = 820.5 (EX 10" NE)
INV = 820.2 (12" S)
- 249 STA. 300+39.6, 24.6' LT
CB TO BE REMOVED
- 250 STA. 300+41.3, 23.0' LT
CB T-A, 4' DIA.,
TYPE 11V F & G
RIM = 823.99
INV = 820.22 (12" N)
INV = 820.22 (12" S)
INV = 820.49 (4" NE)
- 251 STA. 300+39.9, 22.0' RT
INLET TO BE REMOVED
- 252 STA. 300+50.0, 25.5' RT
INLET T-A
TYPE 11V F & G
RIM = 823.91
INV = 820.47 (12" N & 4" SE)
- 253 STA. 10+50.0, 12.0' RT
INLET TYPE A
TYPE 11V F & G
RIM = 820.31
INV = 816.31 (12" SW)
- 254 STA. 10+50.0, 12.0' LT
CB T-A, 4'-DIA.,
TYPE 11V F & G
RIM = 820.31
INV = 815.86 (12" NW)
INV = 816.19 (12" NE)

**IMPROVEMENT BEGINS
STA. 299+23.26**

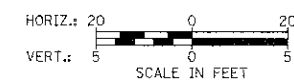


- 145 14' - 12" S.S., CL. A, T-2 @ 0.5%
T.B.F. = 0.0 CU. YD.
- 146 97' - 12" S.S., CL. A, T-2 @ 0.5%
T.B.F. = 73.8 CU. YD.
- 147 1' - 10" S.S. REMOVAL
T.B.F. = 0.3 CU. YD.
- 148 44' - 10" S.S. REMOVAL
T.B.F. = 6.4 CU. YD.
- 149 49' - 12" S.S., CL. A, T-1 @ 0.5%
T.B.F. = 10.6 CU. YD.
- 150 3' - 12" S.S., CL. A, T-1 @ 0.5%
T.B.F. = 0.6 CU. YD.
- 151 24' - 12" S.S., CL. A, T-2 @ 0.5%
T.B.F. = 7.0 CU. YD.

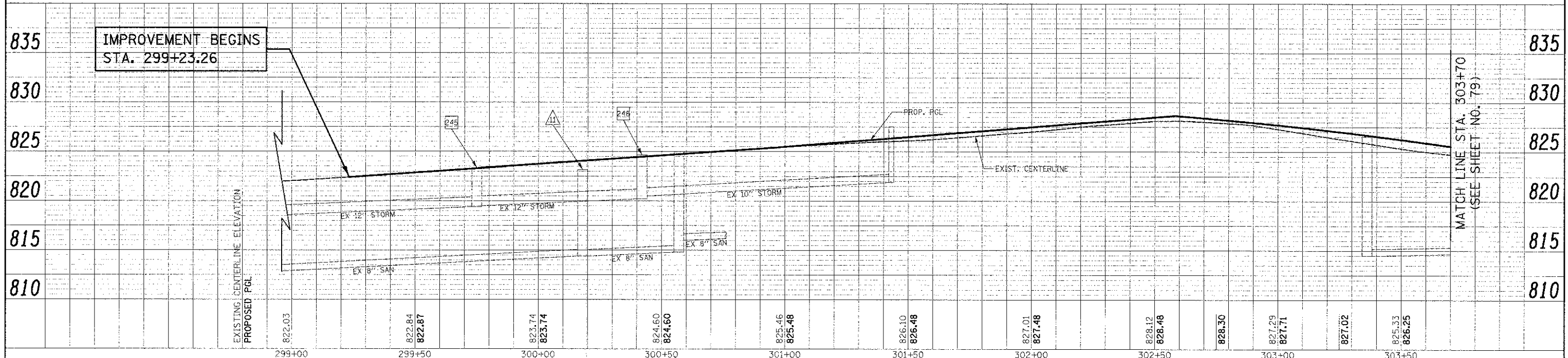
32 STA. 301+65.8, 27.4' RT
FH TO BE ADJUSTED

11 STA. 300+15.2, 46.9' LT
SAN. MH TO BE ADJUSTED
EX RIM = 823.17
PR RIM = 823.20

NOTES:
1. SEE SHEET 48 FOR MERIBEL PROFILE.



HOLMES WAY



MATCH LINE STA. 303+70
(SEE SHEET NO. 79)

FILE NAME =	USER NAME = j.k	DESIGNED - JAT	REVISED -	STATE OF ILLINOIS DEPARTMENT OF TRANSPORTATION	HOLMES WAY DRAINAGE AND UTILITIES	F.A.U. RTE.	SECTION	COUNTY	TOTAL SHEETS	SHEET NO.	
...2329\cadd\hooe\2329.DU.11.dgn	PLOT SCALE = 20.0000' / in.	DRAWN - JAT	REVISED -			1322	01-00674-00-CH	COOK	245	78	
PLOT DATE = 8/17/2012	DATE = 8-20-12	CHECKED - DJK	REVISED -			CONTRACT NO. 63629					
		DATE = 8-20-12	REVISED -			FED. ROAD DIST. NO. 1 ILLINOIS FED. AID PROJECT M-CMM-800305D					