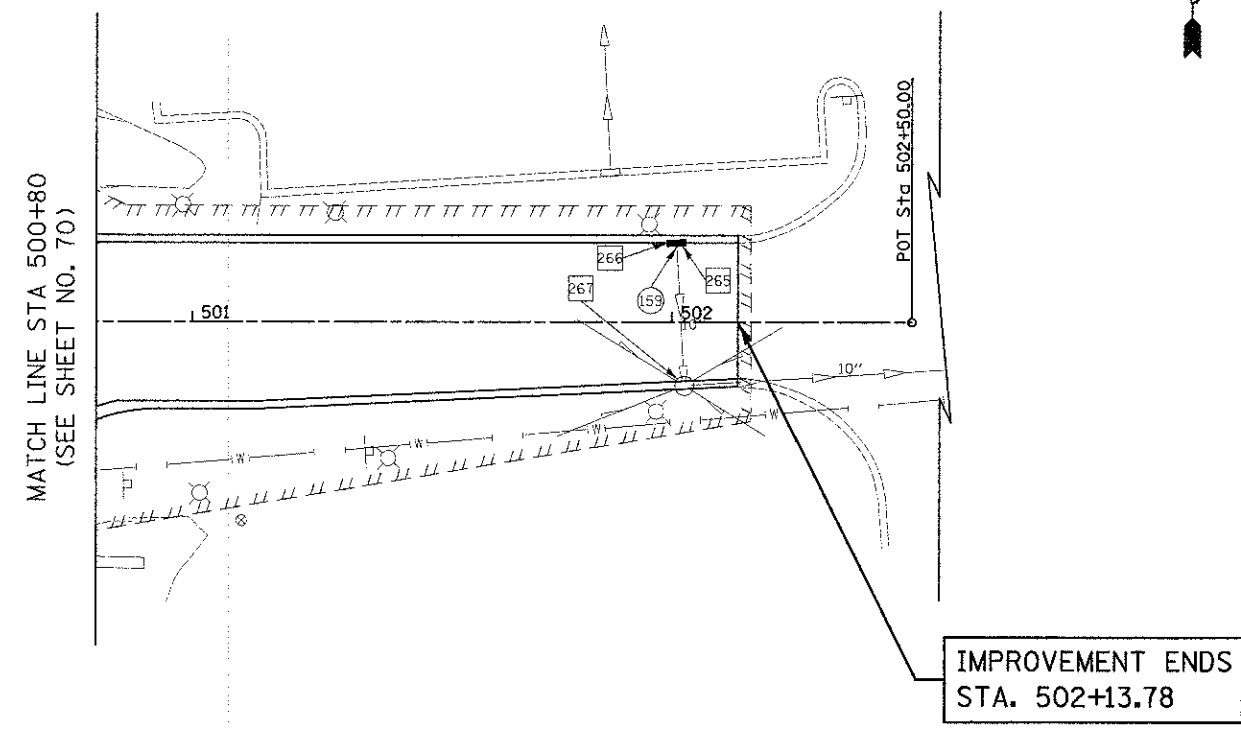


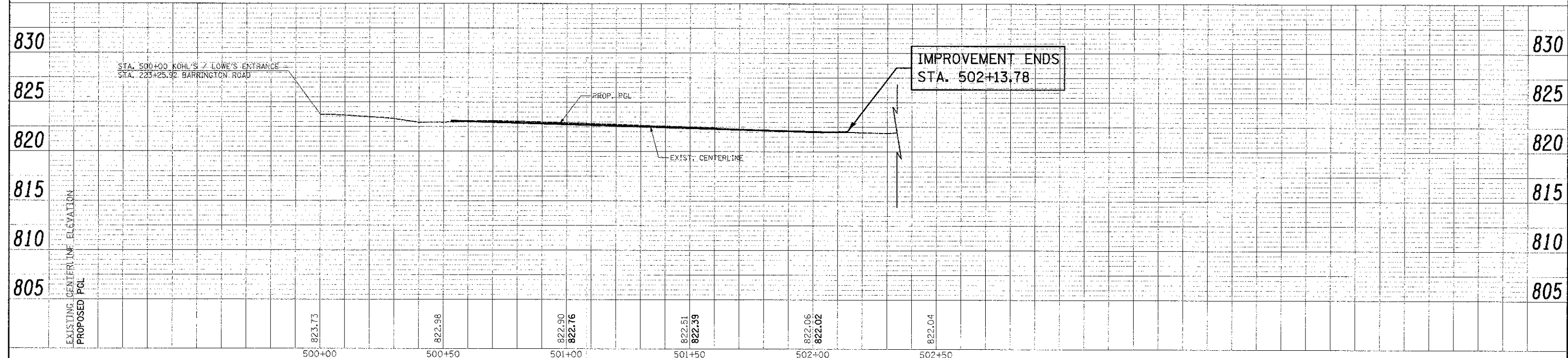
- 265 STA. 502+00.9, 16.5' LT
INLET TO BE REMOVED
 - 266 STA. 502+00.9, 16.5' LT
INLET T-A
TYPE 11 F & G
RIM = 821.68
INV = 819.31 (10" S)
 - 267 STA. 502+02.6, 13.2' RT
CB TO BF. ADJUSTED
EX RIM = 821.47
PR RIM = 821.73
- (159) 1' - 10" S.S., CL. A, T-1 @ 0.5%
T.B.F. = 0.2 CU. YD.

PLAN	REVISIONS	DATE
NO. 1	DATE	BY
NO. 2	DATE	BY
NO. 3	DATE	BY
NO. 4	DATE	BY
NO. 5	DATE	BY
NO. 6	DATE	BY
NO. 7	DATE	BY
NO. 8	DATE	BY
NO. 9	DATE	BY
NO. 10	DATE	BY

PROFILE	REVISIONS	DATE
NO. 1	DATE	BY
NO. 2	DATE	BY
NO. 3	DATE	BY
NO. 4	DATE	BY
NO. 5	DATE	BY
NO. 6	DATE	BY
NO. 7	DATE	BY
NO. 8	DATE	BY
NO. 9	DATE	BY
NO. 10	DATE	BY



KOHL'S/LOWE'S ENTRANCE



FILE NAME = ...2329\oad\sheet\2329_00.13.dgn	USER NAME = djh	DESIGNED - JAT	REVISED -	STATE OF ILLINOIS DEPARTMENT OF TRANSPORTATION	KOHL'S /LOWE'S ENTRANCE DRAINAGE AND UTILITIES	S.A.U. R.T.E. 1322	SECTION 01-00074-00-CH	COUNTY COOK	TOTAL SHEETS 245	SHEET NO. 80		
PLT SCALE = 20.0000' / 1" =	CHECKED - DJK	REVISED -	REVISED -			SCALE: 1" = 20'	SHEET NO. 15 OF 15 SHEETS	STA. 500+80	TO STA. 502+50.00	CONTRACT NO. 63629		
PLT DATE = 6/17/2012	DATE - 8-20-12	REVISED -	REVISED -			FED. ROAD DIST. NO. 1 - ILLINOIS' FED. AID PROJECT V-CMM-80030531						