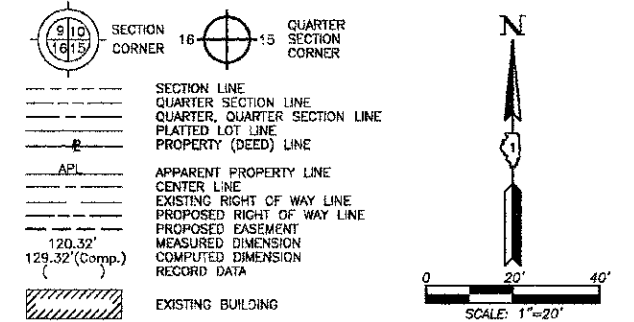


PART OF THE EAST 1/2 OF SEC. 24, TWP. 41 N., R. 9 E. OF THE 3RD. P.M., IN COOK COUNTY, ILLINOIS.

PARCEL NUMBER	OWNER	TOTAL HOLDINGS ACRES	PART TAKEN ACRES	AREA IN EXISTING R.O.W. ACRES	REMAINDER AREA ACRES	EASEMENT AREA ACRES	EASEMENT PURPOSE	PERMANENT INDEX NUMBER	PROPERTY ACQUIRED BY
OHH0002.E.-A OHH0002.E.-B	Target Corporation successor to Dayton Hudson Corporation	12.235	N/A	N/A	12.235	A=0.063 B=0.034	Driveway Construction Driveway Construction	06-24-401-005	
OHH0005 OHH0005.E.	HD Development of Maryland, Inc., a Maryland corporation	14.516	0.012	N/A	14.504	0.073	Driveway Construction	06-24-205-001	

LEGEND

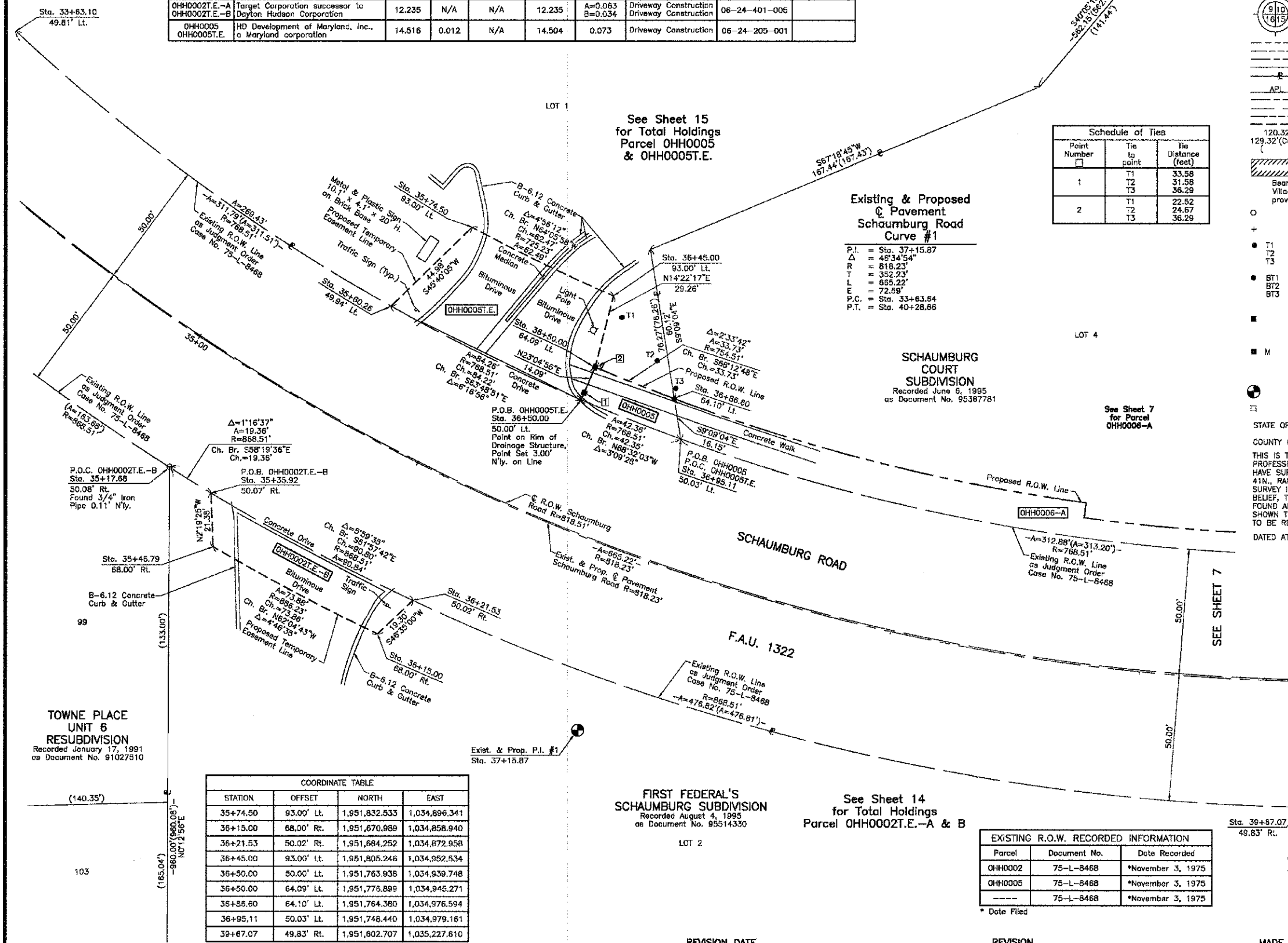


Schedule of Ties

Point Number	Tie to point	Tie Distance (feet)
1	T1	33.58
	T2	31.58
	T3	36.29
2	T1	22.52
	T2	24.67
	T3	36.29

Existing & Proposed Pavement Schaumburg Road Curve #1

P.I. = Sta. 37+15.87
 Δ = 48°34'54"
 R = 818.23'
 T = 352.23'
 L = 865.22'
 E = 72.59'
 P.C. = Sta. 33+63.64
 P.T. = Sta. 40+28.66



TOWNE PLACE UNIT 6 RESUBDIVISION
 Recorded January 17, 1991
 as Document No. 91027510

SCHAUMBURG COURT SUBDIVISION
 Recorded June 6, 1995
 as Document No. 95367781

FIRST FEDERAL'S SCHAUMBURG SUBDIVISION
 Recorded August 4, 1995
 as Document No. 95514330

COORDINATE TABLE

STATION	OFFSET	NORTH	EAST
35+74.50	93.00' Lt.	1,951,832.533	1,034,896.341
36+15.00	68.00' Rt.	1,951,670.989	1,034,858.940
36+21.53	50.02' Rt.	1,951,684.252	1,034,872.958
36+45.00	93.00' Lt.	1,951,805.246	1,034,952.534
36+50.00	50.00' Lt.	1,951,763.938	1,034,939.748
36+50.00	64.09' Lt.	1,951,776.899	1,034,945.271
36+58.80	64.10' Lt.	1,951,764.380	1,034,976.594
36+95.11	50.03' Lt.	1,951,746.440	1,034,979.161
39+67.07	49.83' Rt.	1,951,802.707	1,035,227.610

EXISTING R.O.W. RECORDED INFORMATION

Parcel	Document No.	Date Recorded
OHH0002	75-L-8468	*November 3, 1975
OHH0005	75-L-8468	*November 3, 1975
----	75-L-8468	*November 3, 1975

* Date Filed

PRESIDENT
 ILLINOIS PROFESSIONAL LAND SURVEYOR NO. 35-2797
 LICENSE EXPIRATION DATE: NOVEMBER 30, 2010
 THIS PROFESSIONAL SERVICE CONFORMS TO THE CURRENT ILLINOIS MINIMUM STANDARDS FOR A BOUNDARY SURVEY.

COORDINATES ARE BASED ON THE PUBLISHED VALUES OF N.1,951,837.0449-E.1,034,647.0681 AT FOUND VILLAGE OF SCHAUMBURG GPS SURVEY MONUMENT STATION 1091.

COORDINATE TABLE

STATION	OFFSET	NORTH	EAST
33+63.10	49.81' Lt.	1,951,910.281	1,034,715.161
35+17.68	50.08' Rt.	1,951,737.098	1,034,776.340
35+35.92	50.07' Rt.	1,951,726.935	1,034,792.812
35+46.79	68.00' Rt.	1,951,705.574	1,034,793.679
35+60.26	49.94' Lt.	1,951,801.104	1,034,864.170

JORGENSEN & ASSOCIATES, INC.
 120 PARK AVENUE
 LAKE VILLA, ILLINOIS 60046
 (847) 358-3371

PLAT OF HIGHWAYS
 STATE OF ILLINOIS
 DEPARTMENT OF TRANSPORTATION
 F.A.U. 1322 (SCHAUMBURG ROAD)
 SECTION 01-00074-00-CH COOK COUNTY
 PROJECT CMM-9003(716) JOB NO. R-90-004-11
 STATION 33+00 TO STATION 40+00
 SCALE: 1"=20'
 SHEET 6 OF 16

BUREAU OF LAND ACQUISITION
 201 WEST CENTER COURT
 SCHAUMBURG, ILLINOIS 60196

ROUTE F.A.U. 1322 (SCHAUMBURG ROAD) SECTION 01-00074-00-CH COUNTY COOK JOB NO. R-90-004-11 RECORDING: RECORDED ON AS DOCUMENT NO.