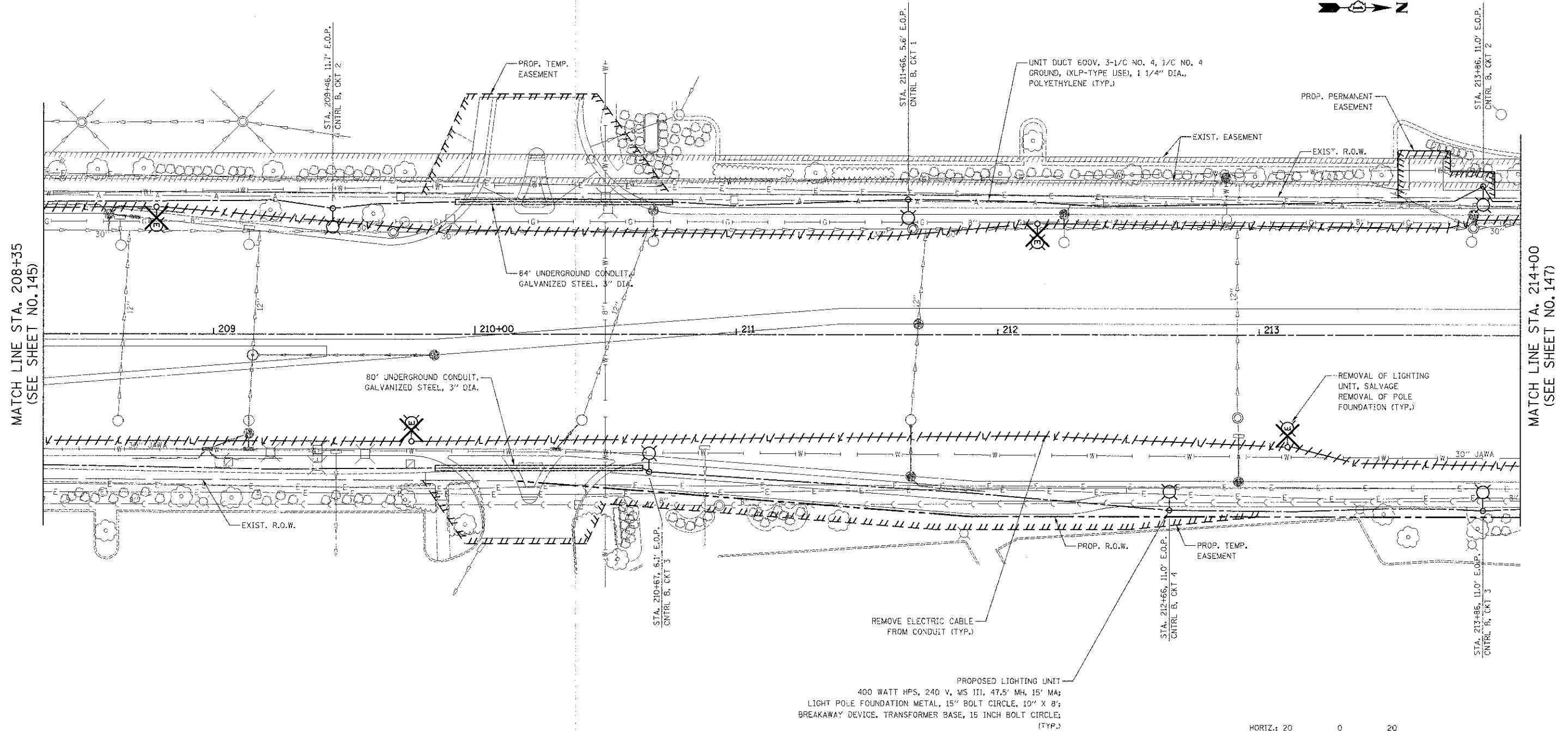


PLAN	SURVEYED	BY	DATE
NOTE BOOK NO.	PLOTTED		
	REVIEWED		
	BY		
	DATE		

PROFILE	SURVEYED	BY	DATE
NOTE BOOK NO.	PLOTTED		
	REVIEWED		
	BY		
	DATE		



PROPOSED LIGHTING UNIT  
 400 WATT HPS, 240 V, MS III, 47.5' MH, 15" MA;  
 LIGHT POLE FOUNDATION METAL, 15" BOLT CIRCLE, 19" X 8";  
 BREAKAWAY DEVICE, TRANSFORMER BASE, 15 INCH BOLT CIRCLE;  
 (TYP.)



BARRINGTON ROAD

FILE NAME =  
 ...load\sheet\2329.L10H1\_02.dgn

USER NAME = e.jk	DESIGNED - SJC	REVISED -
PLT SCALE = 28,0000 1/16"	DRAWN - SJC	REVISED -
PLT DATE = 8/17/2012	CHECKED - DNM	REVISED -
	DATE - 8-20-12	REVISED -

**STATE OF ILLINOIS  
 DEPARTMENT OF TRANSPORTATION**

**BARRINGTON ROAD  
 LIGHTING PLANS**

SCALE: 1" = 20' SHEET NO. 2 OF 12 SHEETS STA. 208+35 TO STA. 214+00

F.A.U. RTE.	SECTION	COUNTY	TOTAL SHEET SHEETS NO.
1322	01-00074-00-CH	COOK	245 146
CONTRACT NO. 63629			
FED. ROAD DIST. NO. 1 ILLINOIS FED. AID PROJECT M-CM-800305D			