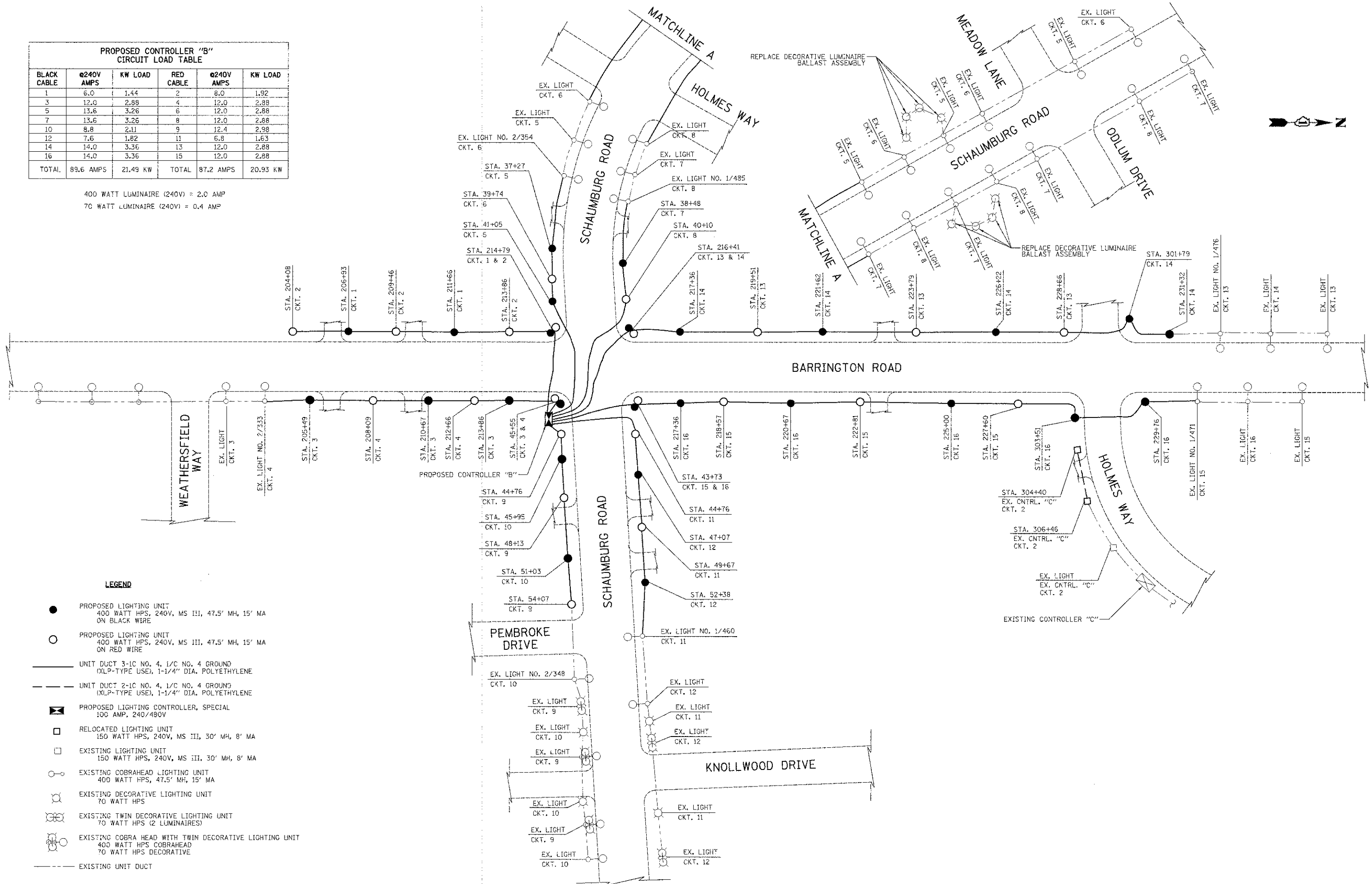


PROPOSED CONTROLLER "B" CIRCUIT LOAD TABLE					
BLACK CABLE	Ø240V AMPS	KW LOAD	RED CABLE	Ø240V AMPS	KW LOAD
1	6.0	1.44	2	8.0	1.92
3	12.0	2.88	4	12.0	2.88
5	13.6	3.26	6	12.0	2.88
7	13.6	3.26	8	12.0	2.88
10	8.8	2.11	9	12.4	2.98
12	7.6	1.82	11	6.8	1.63
14	14.0	3.36	13	12.0	2.88
16	14.0	3.36	15	12.0	2.88
TOTAL	89.6 AMPS	21.49 KW	TOTAL	87.2 AMPS	20.93 KW

400 WATT LUMINAIRE (240V) = 2.0 AMP
70 WATT LUMINAIRE (240V) = 0.4 AMP



LEGEND

- PROPOSED LIGHTING UNIT
400 WATT HPS, 240V, MS III, 47.5' MH, 15' MA
ON BLACK WIRE
- PROPOSED LIGHTING UNIT
400 WATT HPS, 240V, MS III, 47.5' MH, 15' MA
ON RED WIRE
- UNIT DUCT 3-1C NO. 4, 1/C NO. 4 GROUND
(XLP-TYPE USE), 1-1/4" DIA. POLYETHYLENE
- UNIT DUCT 2-1C NO. 4, 1/C NO. 4 GROUND
(XLP-TYPE USE), 1-1/4" DIA. POLYETHYLENE
- PROPOSED LIGHTING CONTROLLER, SPECIAL
300 AMP, 240/480V
- RELOCATED LIGHTING UNIT
150 WATT HPS, 240V, MS III, 30' MH, 8' MA
- EXISTING LIGHTING UNIT
150 WATT HPS, 240V, MS III, 30' MH, 8' MA
- EXISTING COBRAHEAD LIGHTING UNIT
400 WATT HPS, 47.5' MH, 15' MA
- EXISTING DECORATIVE LIGHTING UNIT
70 WATT HPS
- EXISTING TWIN DECORATIVE LIGHTING UNIT
70 WATT HPS (2 LUMINAIRES)
- EXISTING COBRA HEAD WITH TWIN DECORATIVE LIGHTING UNIT
400 WATT HPS COBRAHEAD
70 WATT HPS DECORATIVE
- EXISTING UNIT DUCT