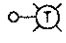

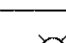
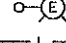
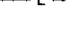
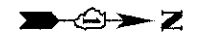
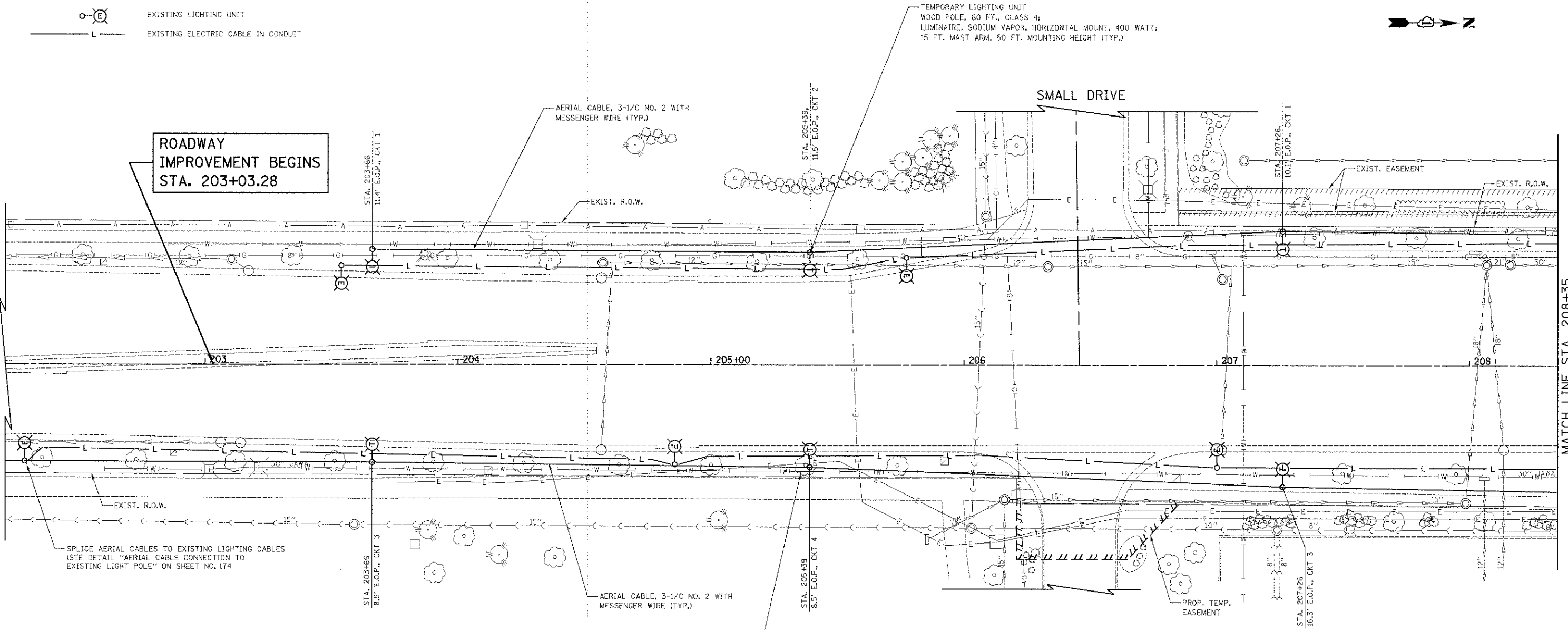


LEGEND

-  TEMPORARY LIGHTING UNIT
WOOD POLE, 60 FT., CLASS 4;
LUMINAIRE, SODIUM VAPOR, HORIZONTAL MOUNT, 400 WATT;
15 FT. MAST ARM, 50 FT. MOUNTING HEIGHT
-  TEMPORARY WOOD POLE, 50 FT., CLASS 4
-  AERIAL CABLE, 3-1/8 NO. 2 WITH MESSENGER WIRE
-  EXISTING LIGHTING UNIT
-  EXISTING ELECTRIC CABLE IN CONDUIT



**ROADWAY
IMPROVEMENT BEGINS
STA. 203+03.28**



MATCH LINE STA. 208+35
(SEE SHEET NO. 164)

NOTES:

1. TEMPORARY LIGHTING SHALL BE INSTALLED AND OPERATIONAL BEFORE DISCONNECTING AND REMOVING EXISTING LIGHTING UNITS.
2. TEMPORARY LIGHTING SHALL REMAIN OPERATIONAL UNTIL THE PROPOSED LIGHTING SYSTEM IS INSTALLED AND IS OPERATIONAL.



BARRINGTON ROAD

DATE	
BY	
PROJECT	
FILE NAME	

DATE	
BY	
PROJECT	
FILE NAME	

FILE NAME = ...\\shoat\2329_TEMP_LIGHT_01.dgn

USER NAME = djk
 DESIGNED - SJC
 DRAWN - SJC
 CHECKED - DNM
 DATE - 8-20-12

REVISED -
 REVISED -
 REVISED -
 REVISED -

**STATE OF ILLINOIS
DEPARTMENT OF TRANSPORTATION**

**BARRINGTON ROAD
TEMPORARY LIGHTING PLANS**
 SCALE: 1" = 20' SHEET NO. 1 OF 1 SHEETS STA. 203+03.28 TO STA. 208+35

F.A.D. RTE.	SECTION	COUNTY	TOTAL SHEETS	SHEET NO.
1322	01-00074-00-CH	COOK	245	163
CONTRACT NO. 63629				
FED. ROAD DIST. NO. 1 ILLINOIS FED. AID PROJECT M-CM-800305D				