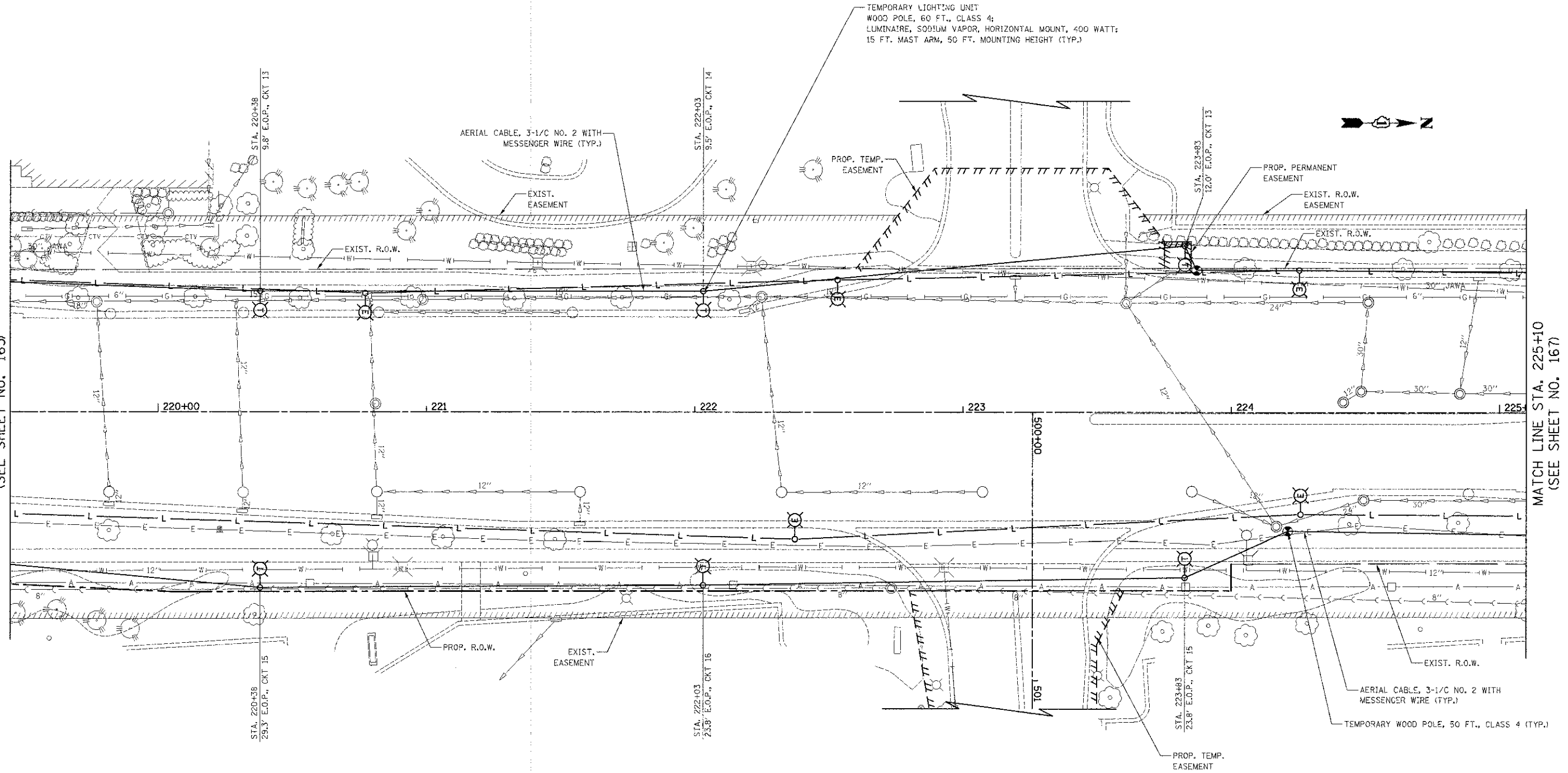


PLAN	DATE
SURVEYED	BY
PLOTTED	BY
CHECKED	BY
NOTE BOOK NO.	DATE
ADD-FILE NAME	

PROFILE	DATE
SURVEYED	BY
PLOTTED	BY
CHECKED	BY
NOTE BOOK NO.	DATE
STRUCTURE NOTATIONS	

MATCH LINE STA. 219+45
(SEE SHEET NO. 165)

MATCH LINE STA. 225+10
(SEE SHEET NO. 167)



NOTES:

- TEMPORARY LIGHTING SHALL BE INSTALLED AND OPERATIONAL BEFORE DISCONNECTING AND REMOVING EXISTING LIGHTING UNITS.
- TEMPORARY LIGHTING SHALL REMAIN OPERATIONAL UNTIL THE PROPOSED LIGHTING SYSTEM IS INSTALLED AND IS OPERATIONAL.



BARRINGTON ROAD

FILE NAME = ...sheet\2295_TEMP_LIGHT_04.dgn

USER NAME = djk
PLOT SCALE = 20.0000' / in.
PLOT DATE = 8/16/2012

DESIGNED - SJC
DRAWN - SJC
CHECKED - DMN
DATE - 8-20-12

REVISED -
REVISED -
REVISED -
REVISED -

STATE OF ILLINOIS
DEPARTMENT OF TRANSPORTATION

BARRINGTON ROAD
TEMPORARY LIGHTING PLANS
SCALE: 1" = 20' SHEET NO. 4 OF 11>> SHEETS STA. 219+45 TO STA. 225+10

F.A.U. R'E.	SECTION	COUNTY	TOTAL SHEETS	SHEET NO.
1322	01-00074-00-CH	COOK	245	166
CONTRACT NO. 63629				
FED. ROAD DIST. NO. 1 ILLINOIS FED. AID PROJECT M-CM-80031051				