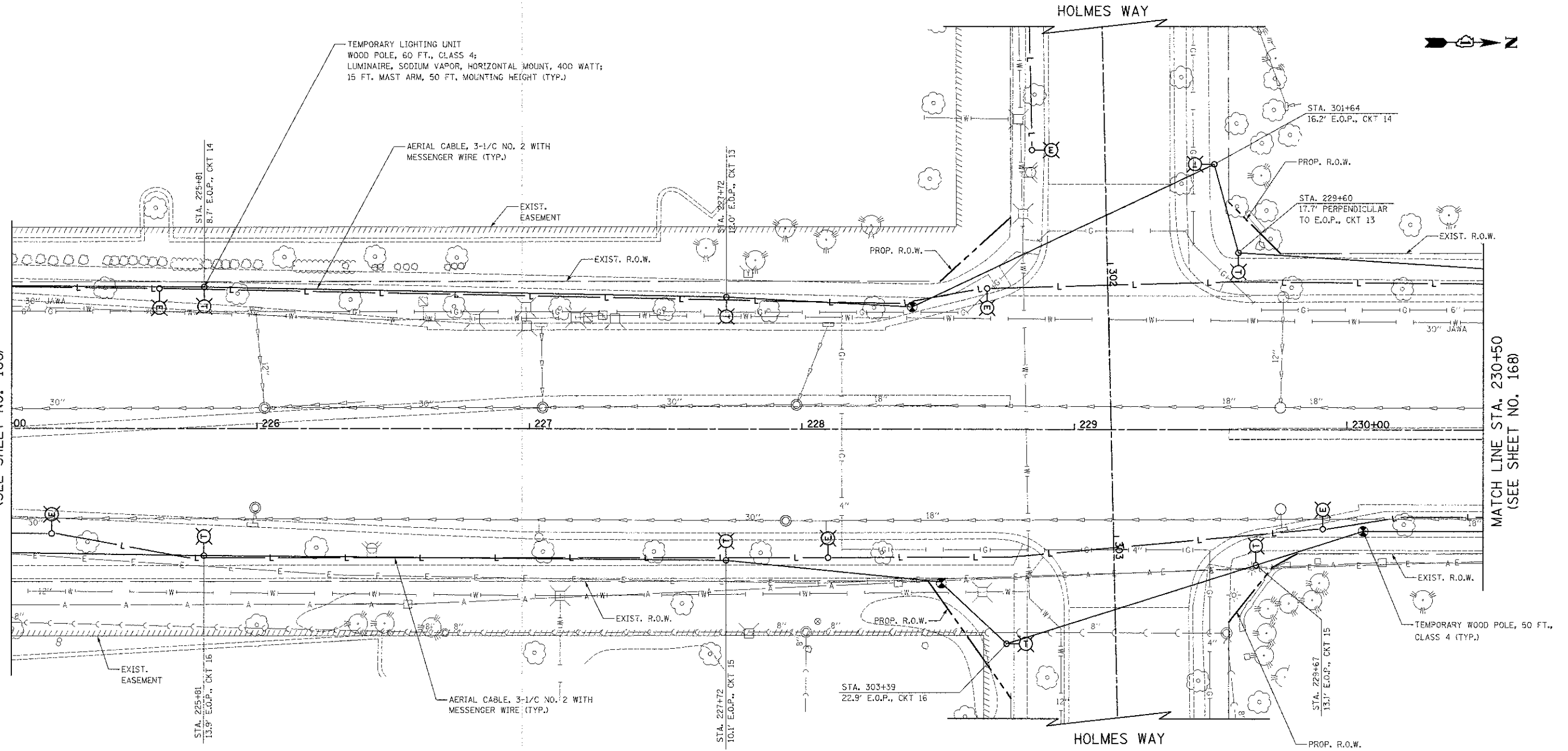


DATE	
BY	
DESIGNED	
DRAWN	
CHECKED	
DATE	
PROJECT	

DATE	
BY	
DESIGNED	
DRAWN	
CHECKED	
DATE	
PROJECT	

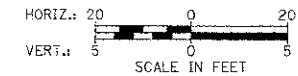
MATCH LINE STA. 225+10  
(SEE SHEET NO. 166)

MATCH LINE STA. 230+50  
(SEE SHEET NO. 168)



NOTES:

1. TEMPORARY LIGHTING SHALL BE INSTALLED AND OPERATIONAL BEFORE DISCONNECTING AND REMOVING EXISTING LIGHTING UNITS.
2. TEMPORARY LIGHTING SHALL REMAIN OPERATIONAL UNTIL THE PROPOSED LIGHTING SYSTEM IS INSTALLED AND IS OPERATIONAL.



BARRINGTON ROAD

FILE NAME : \sheet\2329\_TEMP\_LIGHT\_25.dgn

USER NAME : djk	DESIGNED - SJC	REVISIONS
PLOT SCALE = 28.98000 ' / in.	DRAWN - SJC	REVISED -
PLOT DATE = 8/16/2012	CHECKED - DNM	REVISED -
	DATE - 8-20-12	REVISED -

STATE OF ILLINOIS  
DEPARTMENT OF TRANSPORTATION

BARRINGTON ROAD  
TEMPORARY LIGHTING PLANS

SCALE: 1" = 20' SHEET NO. 5 OF 11 SHEETS STA. 225+10 TO STA. 230+50

F.A.U. RTE.	SECTION	COUNTY	TOTAL SHEETS	SHEET NO.
1322	C2-00074-00-CH	COOK	245	167
FED. ROAD DIST. NO. 1 (ILLINOIS) FED. AID PROJECT M-CM-800305D			CONTRACT NO. 63629	