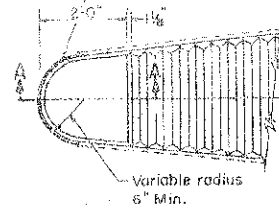
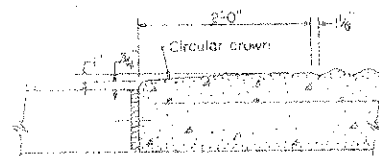


STANDARD DESIGN CONCRETE MEDIANS

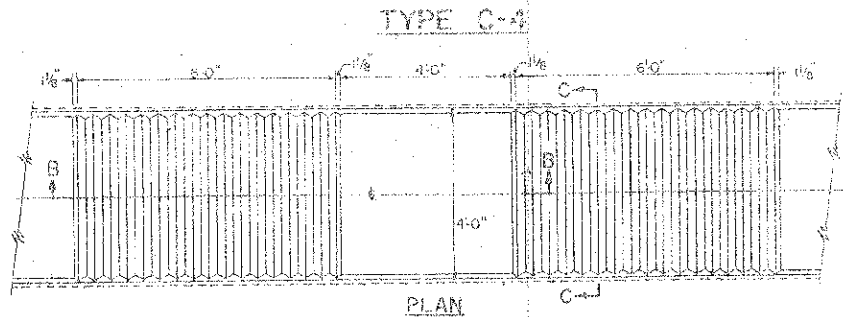
3/4" Preformed expansion joint filler
between adjacent pavement and median
edge of one radius



NOTE: OMIT TAPERED SECTION UNLESS SHOWN ON PLANS

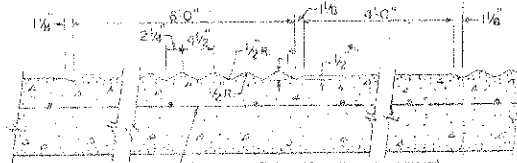


SECTION A-A

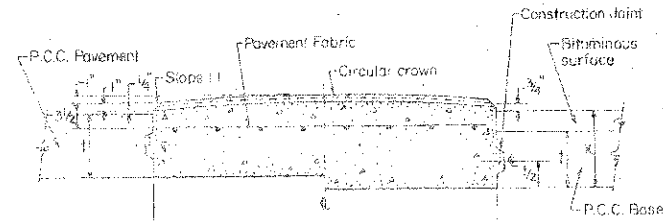


TYPE C-4

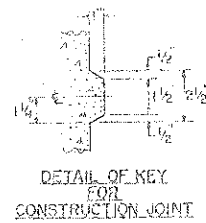
PLAN



SECTION B-B



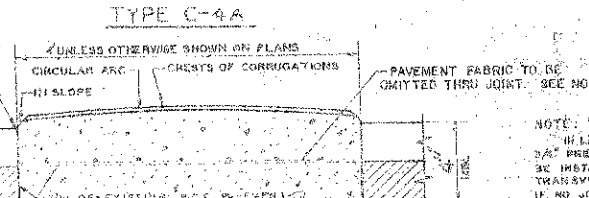
SECTION C-C
HALF SECTION FOR P.C.C. PAVEMENT
HALF SECTION FOR P.C.C. BASE COURSE



DETAIL OF KEY FOR CONSTRUCTION JOINT

PAVEMENT SURFACE ADJACENT TO MEDIAN (SEE CROSS SECTIONS FOR ELEVATIONS)

PROPOSED BITUMINOUS SURFACE
EXISTING BITUMINOUS SURFACE

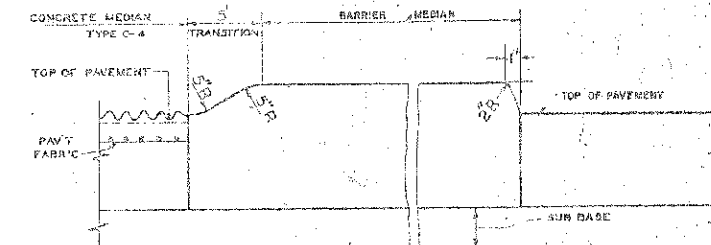


UNLESS OTHERWISE SHOWN ON PLANS
CIRCULAR ARC
CRESTS OF CORRUGATIONS
PAVEMENT FABRIC TO BE OMITTED THRU JOINT. SEE NOTE

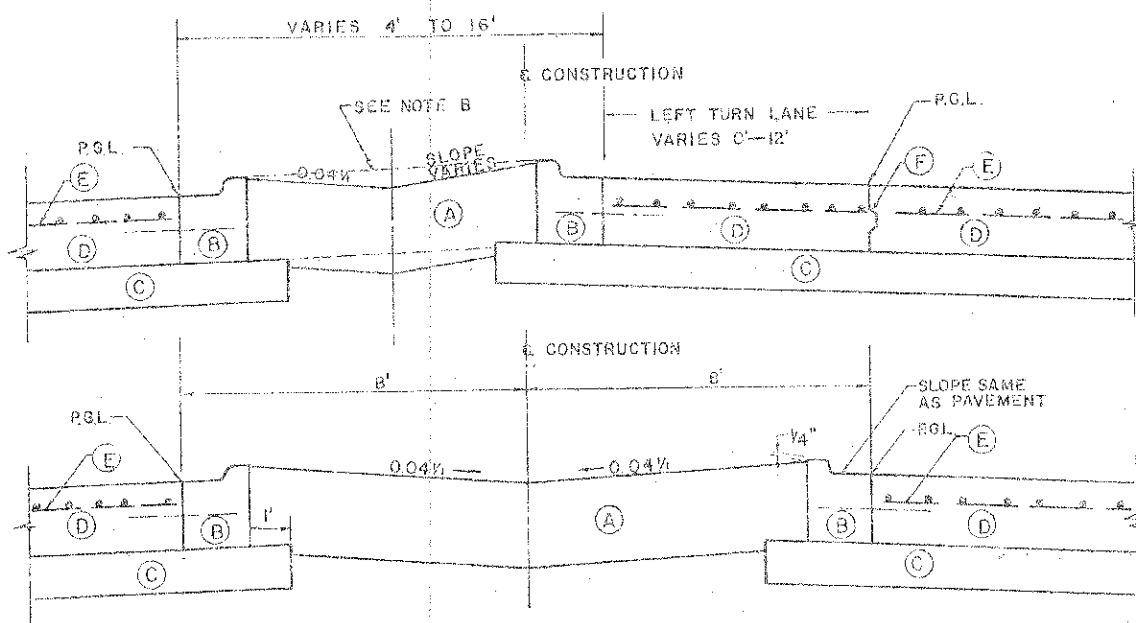
NOTE:
IN LIEU OF CONSTRUCTION JOINTS, 3/4" PREFORMED EXPANSION JOINT FILLER SHALL BE INSTALLED AT LOCATIONS CONCORDANT WITH TRANSVERSE JOINTS IN THE EXISTING PAVEMENT. IF NO JOINTS ARE DISCOVERABLE IN THE EXISTING PAVEMENT, JOINTS SHALL BE INSTALLED IN MEDIAN AT 20' INTERVALS OR AS DIRECTED BY ENGINEER.

EXISTING BITUMINOUS SURFACE TO BE REMOVED TO A WIDTH SUFFICIENT TO ENABLE CONSTRUCTION OF THE MEDIAN, OR AS SHOWN ON THE PLANS AND PAID FOR AT THE CONTRACT UNIT PRICE BID PER SQUARE YARD FOR BITUMINOUS SURFACE REMOVAL AND PER LINEAL FOOT FOR CUTTING BITUMINOUS SURFACE.

THE SURFACE CONFIGURATION FOR TYPE C-4A MEDIAN IS THE SAME AS TYPE C-4 MEDIAN.



LONGITUDINAL SECTION SHOWING TRANSITION BETWEEN TYPE C-4 AND BARRIER MEDIAN
TRANSITIONAL AREA IS TO BE PAID FOR AS THE TYPE OF BARRIER MEDIAN SHOWN ON THE PLANS

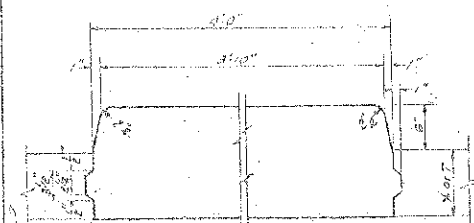


NOTE B: AT LOCATION NOTED ON PLANS THE MEDIAN SURFACE SHALL BE A STRAIGHT LINE FROM TOP OF CURB TO TOP OF CURB.

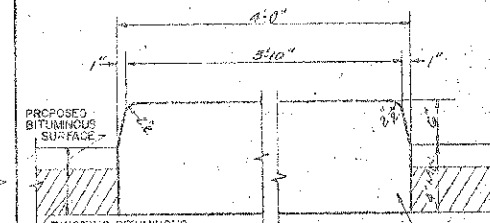
- (A) BITUMINOUS SHOULDERS (12 INCH)
- (B) COMBINATION CONCRETE CURB AND GUTTER, M-2.12
- (C) SUB-BASE GRANULAR MATERIAL, TYPE B (6 INCH)
- (D) PORTLAND CEMENT CONCRETE PAVEMENT (10 INCH)
- (E) PAVEMENT FABRIC
- (F) CONSTRUCTION JOINT (FOR TYPE SEE PLANS)

TYPE M-7

TYPE 5



TYPE 6 A



EXISTING BITUMINOUS SURFACE TO BE REMOVED TO A WIDTH SUFFICIENT TO ENABLE CONSTRUCTION OF THE MEDIAN, OR AS SHOWN ON THE PLANS AND PAID FOR AT THE CONTRACT UNIT PRICE BID PER SQUARE YARD FOR BITUMINOUS SURFACE REMOVAL AND PER LINEAL FOOT FOR CUTTING BITUMINOUS SURFACE.

GENERAL NOTES

Dimension "1" is equal to the adjacent pavement edge thickness or base course edge thickness.
Dimension "x" is equal to the adjacent base course edge thickness plus the bituminous surface edge thickness.

The cost of furnishing and placing pavement fabric in the median shall be included in the unit price bid per square foot for CONCRETE MEDIAN, TYPE C-4 and TYPE C-4A respectively.

EXPANSION JOINTS - Shall be of a type similar to that in the adjacent pavement except dowel bars will not be required.
CONSTRUCTION JOINTS - Shall be constructed and sealed in the same manner as the joints in the adjacent pavement, or shall be constructed with a 3/4" preformed expansion joint filler conforming to the full cross-section of the median. Dowel Bars to be omitted in median joints.

The earth work shall be considered as being incidental to Earth Excavation.
Plan views of medians shown are typical. Median layout and radii shall be as shown on the plans.
Medians may vary in width as required on the plans, but regardless of any width variation, shall be measured and paid for at the contract unit price per square foot for concrete median of the type specified.

The vertical edge dimension for Type C-4 Median shall be 10" when constructed adjacent to flexible pavement. Also, keyway shall be omitted and construction joints shall be installed at 20' intervals.

Construction and expansion joints shall be installed in Type C-4 median in propagation with joints in adjacent P.C.C. Pavement. For median adjacent to bituminous surface, construction joints shall be installed at 20' intervals.

Rev. 7-16-79 W.J.W.
Rev. 5-27-70 W.J.W.
Rev. 7-8-61 W.J.W.

NOT TO SCALE

COUNTY OF COOK	
DEPARTMENT OF HIGHWAYS	
DETAILS OF CONCRETE MEDIANS	
COMPILED BY DRAUGHTSMAN CHECKED BY W.J.W.	APPROVED BY [Signature] [Signature]

STATE OF ILLINOIS DEPARTMENT OF TRANSPORTATION	ISSUED 12-12-62
PASSED May 29, 1975 [Signature] Engineer of Design Operations	REVISIONS
APPROVED May 29, 1975 [Signature] Engineer of Design	W.F. 8-27-68
	R.F. 1-15-69
	W.F. 10-1-69
	D.W. 9-2-73
	D.W. 10-31-74
	D.W. 5-29-75
	D.W. 7-15-77
	Redrawn 9-27-82

FILE NAME = ...2329\end\sheet\2329_DET_06.dgn

USER NAME = djc
PLOT SCALE = 20.0000' / in.
PLOT DATE = 8/17/2012

DESIGNED - KRK
DRAWN - KRK
CHECKED - DJK
DATE - 8-20-12

REVISED -
REVISED -
REVISED -
REVISED -

STATE OF ILLINOIS
DEPARTMENT OF TRANSPORTATION

BARRINGTON ROAD AND SCHAUMBURG ROAD
DETAILS

SCALE: SHEET NO. 5 OF 10 SHEETS STA. TO STA.

F.A.I. REC. 1322	SECTION 01-00074-00-CH	COUNTY COOK	TOTAL SHEETS 245	SHEET NO. 180
FED. ROAD DIST. NO. 1 ILLINOIS FED. AID PROJECT			CONTRACT NO. 63629	

NOTE: DETAIL APPLIES TO SCHAUMBURG ROAD ONLY